

Watch Movement Specification and Drawing

MULTI - FUNCTION

Cal. VX3YE

Movement Size

10 1/2'''

Casing Diameter

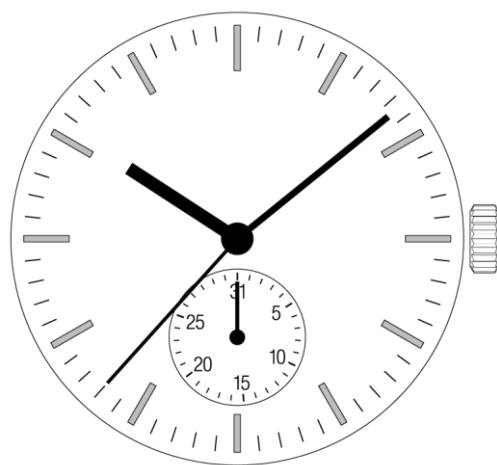
Ø 23.3mm

Height

3.05mm

Battery Life

3 years

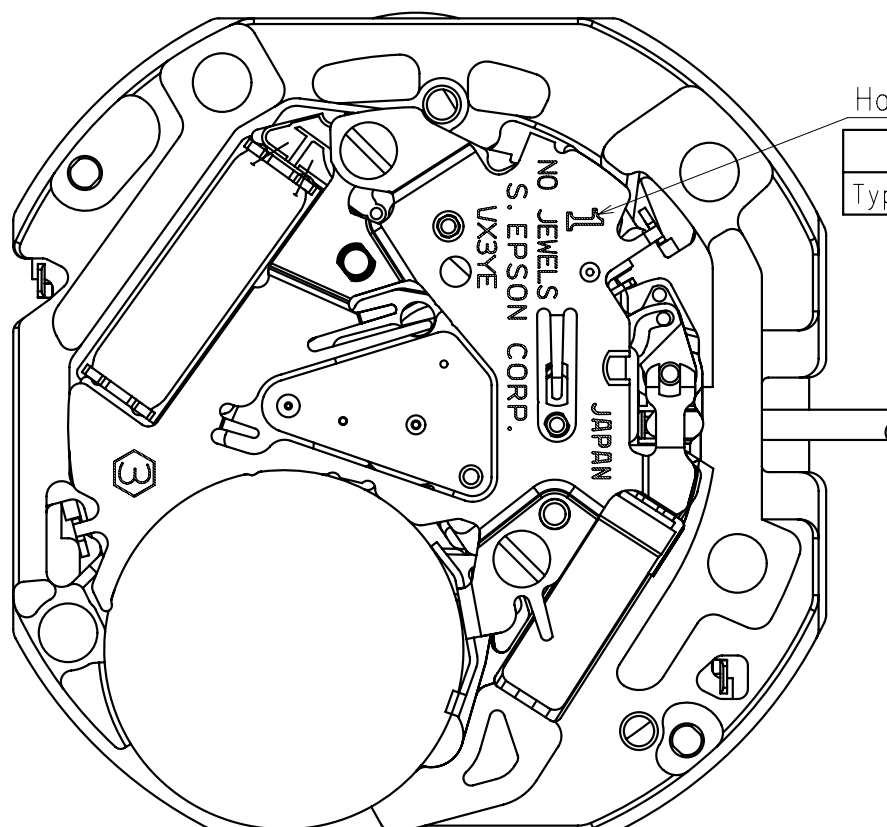


Date: 18/Sep./'20

Cal. VX3YE

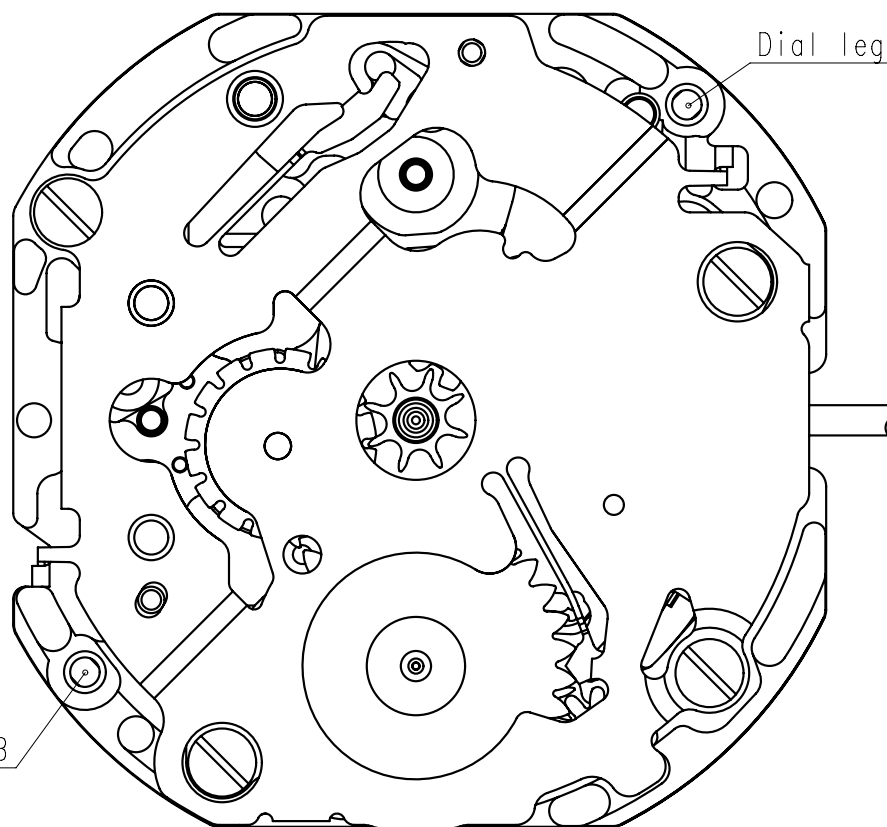
Items	Rev.	Page
Specifications	01	1
Appearance	00	2
Casing	00	3
Hand fitting	01	4
Hand setting stem	00	5
Dial	00	6
Casing ring	00	7
Operation	00	8

Cal.	VX3YE	Specifications		Date : 18/Sep./'20
				Rev. : 01
Analog Quartz 10 1/2" Slim Movement / 3 hands (H/M/S) and 1 eye with Date				
1. MOVEMENT DIMENSIONS				
Outside diameter	φ 24.00mm × 21.50mm(3-9H) × 21.65mm(12-6H)			
Casing diameter	φ 23.30mm × 21.30mm(3-9H) × 21.50mm(12-6H)			
Total height	3.05mm (including battery)			
2. TIME STANDARD				
Type of quartz oscillator	Tuning fork			
Frequency of quartz oscillator	32,768 Hz			
Accuracy	±20 seconds per month (on wrist)			
Operating temperature range	-5°C to +50°C			
Regulation device	Nil (Pre-adjusted)			
3. INDICATOR / FUNCTIONS				
3 Hands	Hour / Minute / Second			
3 Small hands	Date (6H)			
Reset switch				
Setting mechanism	Crown at normal position	: Free		
	Crown pulled out 1st click	: Instant date change		
	Crown pulled out 2nd click	: Time setting / Reset		
4. FEATURES				
Jewels	0 Jewels			
Anti-magnetism	Over 1600A/m (Direct current magnetic field)			
Maximum unbalance of hands	Second hand	: 0.07 μ N·m		
	Minute hand	: 0.6 μ N·m		
	Hour hand	: 0.5 μ N·m		
5. BATTERY				
Type / Size	Silver oxide battery / φ 9.5mm × t 2.0mm			
Recommended battery	SR920SW (Maxell, Murata, Seizaiken)			
Nominal voltage	1.55 V			
Battery life	Approx. 3 years			
Driving current consumption	Approx. 1.6 μ A			
Operation stopping voltage	1.1 V			
6. SEPARATED PARTS (Parts code)				
Hand setting stem	0351177 or 0351578			
Battery	SR920SW			
7. TEST OF ACCURACY				
Equipment to be used	SEIKO quartz tester QT-99, Greiner quartz timer-C , Witschi Q-tester 4000			
Duration of measurement	10 seconds			
Microphone to be used	Electromagnetic detection type			
All specifications are subject to change without notice.				



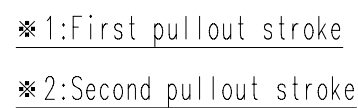
Hands type

	Mark
Type S (1)	1

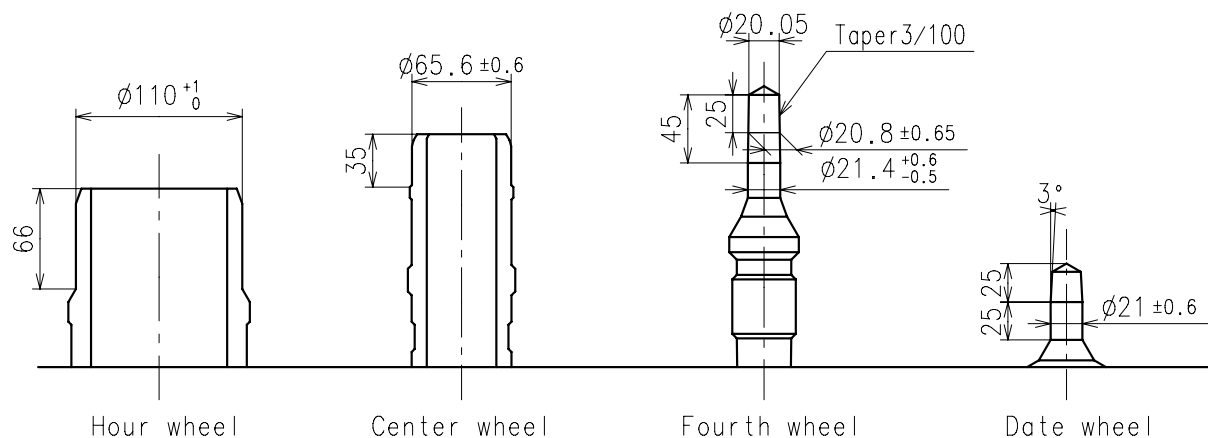


Dial leg hole A

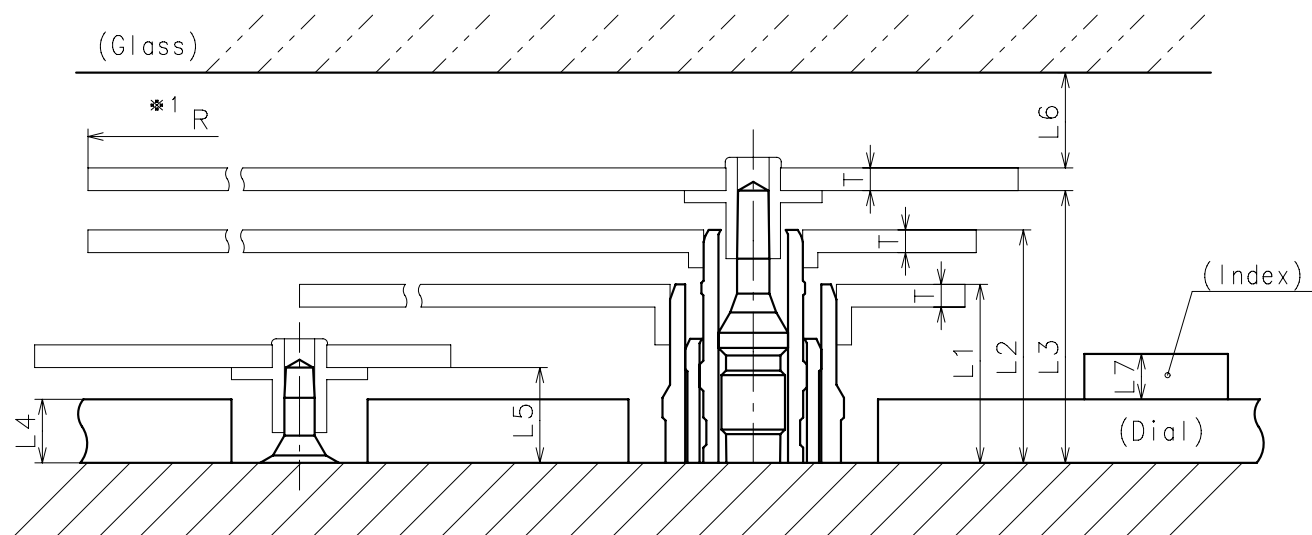
Dial leg hole B



- ※ Hour hand unbalance $\leq 0.5\mu\text{ N}\cdot\text{m}$ ($50\mu\text{ g}\cdot\text{m}$)
- ※ Minute hand unbalance $\leq 0.6\mu\text{ N}\cdot\text{m}$ ($60\mu\text{ g}\cdot\text{m}$)
- ※ Second hand unbalance $\leq 0.07\mu\text{ N}\cdot\text{m}$ ($7\mu\text{ g}\cdot\text{m}$)

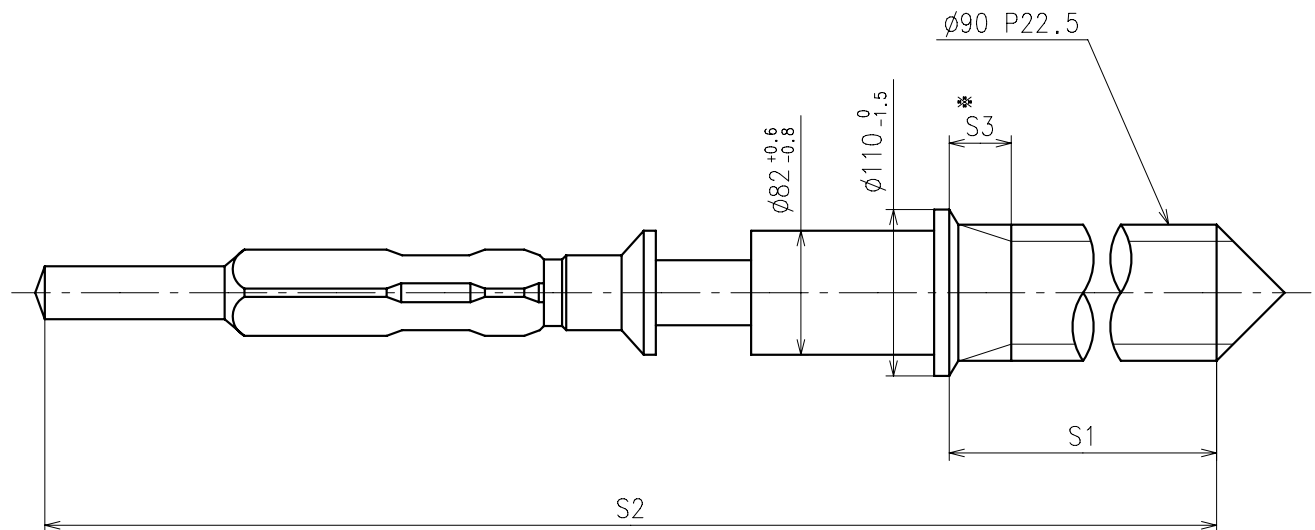


	Parts No.			
	Hour wheel	Center wheel	Fourth wheel	Date wheel
Type S (1) VX3YE1	0271563	0221575	0241528	0970538



	L1	L2	L3	L4	L5	L6	L7	T	*1 R
Type S (1) VX3YE1	118	154	180	40	63	MIN: 50	MAX: 30	15	MAX: 1250

※1: It is the size taken into consideration for hands attachment.
Please observe some standard value specified in unbalance when using long hands.

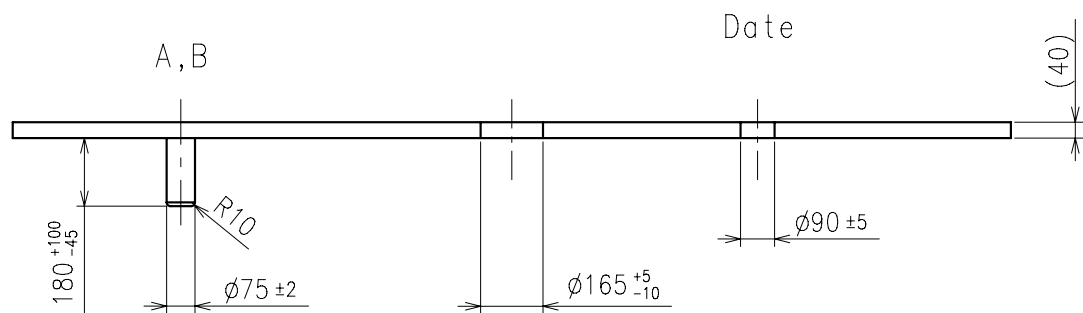
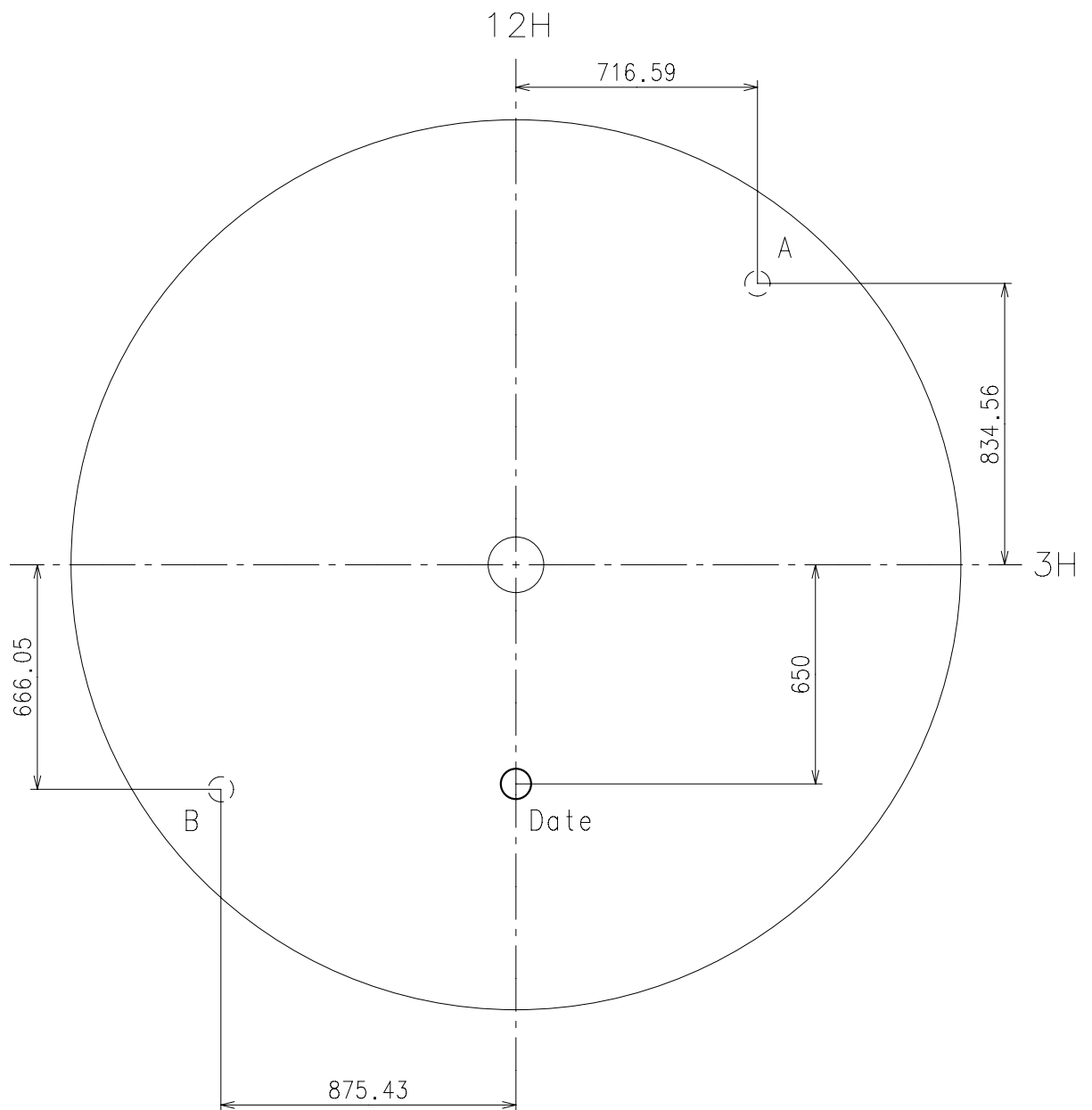


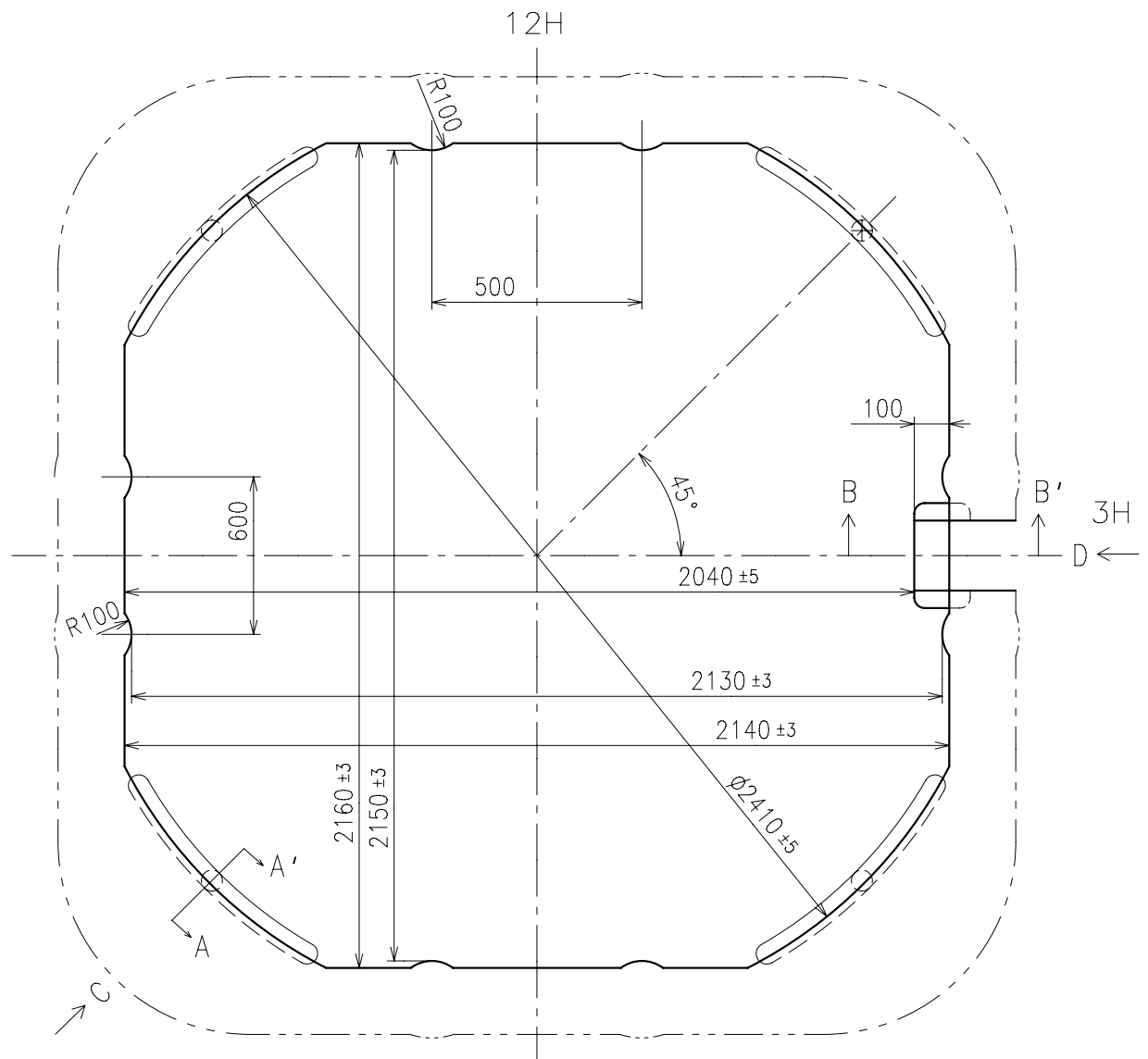
※ Not threaded

	Part No.	S1	S2	※ S3
Type-1 (Standard)	0351177	1366	1964	60
Type-2	0351578	2507	3105	650

Material : Steel

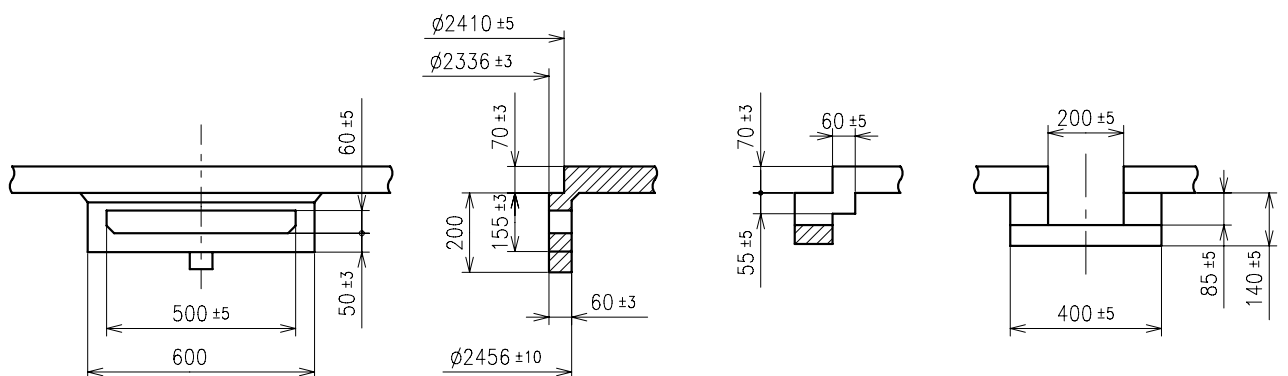
Hardness : Vickers 600±50

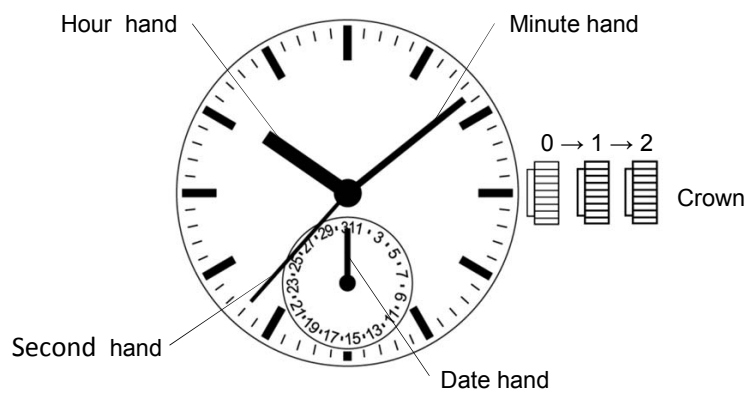


C view

A-A' section

B-B' section

D view



Crown position			
0 click		1st click	2nd click
Crown	Free	Turn counterclockwise for date change	Time setting