

Watch Movement Specification and Drawing

CALENDAR

Cal. VX19E

Movement Size

8 3/4'''

Casing Diameter

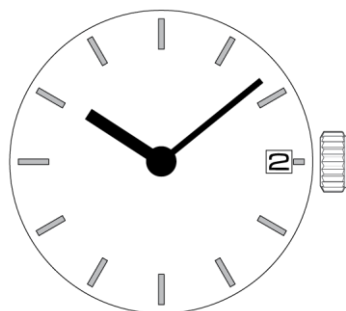
Ø 19.4mm

Height

2.60mm

Battery Life

3 years

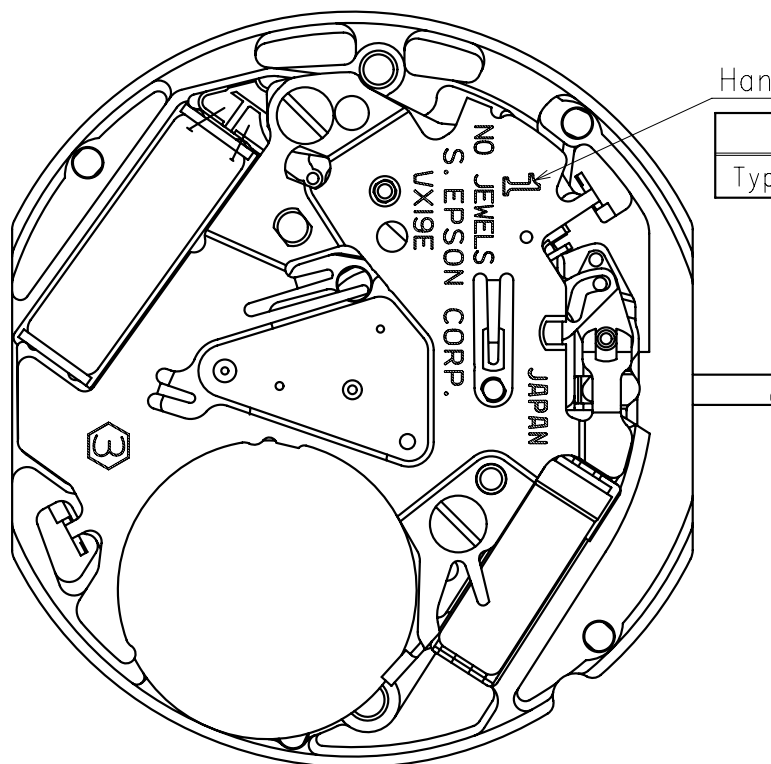


Date: 18/Sep./'20

Cal. VX19E

Items	Rev.	Page
Specifications	04	1
Appearance	02	2
Casing	03	3
Hand fitting	02	4
Hand setting stem	03	5
Dial-01	02	6-01
Dial-02	01	6-02
Casing ring	01	7

Cal.	VX19E	Specifications	Date : 18/Sep./'20
			Rev. : 04
Analog Quartz 8 3/4" Slim Movement / Two hands (H/M) with Calendar			
1. MOVEMENT DIMENSIONS			
Outside diameter	φ 20.00mm × 18.00mm(3-9H)		
Casing diameter	φ 19.40mm × 18.00mm(3-9H)		
Total height	2.60mm (including battery)		
2. TIME STANDARD			
Type of quartz oscillator	Tuning fork		
Frequency of quartz oscillator	32,768 Hz		
Accuracy	±20 seconds per month (on wrist)		
Operating temperature range	-5°C to +50°C		
Regulation device	Nil (Pre-adjusted)		
3. INDICATOR / FUNCTIONS			
2 Hands	Hour / Minute		
Calendar	Instant setting device for date calendar		
Reset switch			
Setting mechanism	Crown at normal position	: Free	
	Crown pulled out 1st click	: Instant date change	
	Crown pulled out 2nd click	: Time setting / Reset	
4. FEATURES			
Jewels	0 Jewels		
Anti-magnetism	Over 1600A/m (Direct current magnetic field)		
Maximum unbalance of hands	Hour hand	: 0.5 μ N·m	
	Minute hand	: 0.6 μ N·m	
5. BATTERY			
Type / Size	Silver oxide battery / φ 7.9mm × t 1.6mm		
Recommended battery	SR716SW (Maxell, Murata)		
Nominal voltage	1.55 V		
Battery life	Approx. 3 years		
Driving current consumption	Approx. 0.80 μ A		
Operation stopping voltage	0.9 V		
6. SEPARATED PARTS (Parts code)			
Hand setting stem	0351177 or 0351578		
Battery	SR716SW		
7. TEST OF ACCURACY			
Equipment to be used	SEIKO quartz tester QT-99, Greiner quartz timer-C , Witschi Q-tester 4000		
Duration of measurement	10 seconds		
Microphone to be used	Electromagnetic detection type		
All specifications are subject to change without notice.			



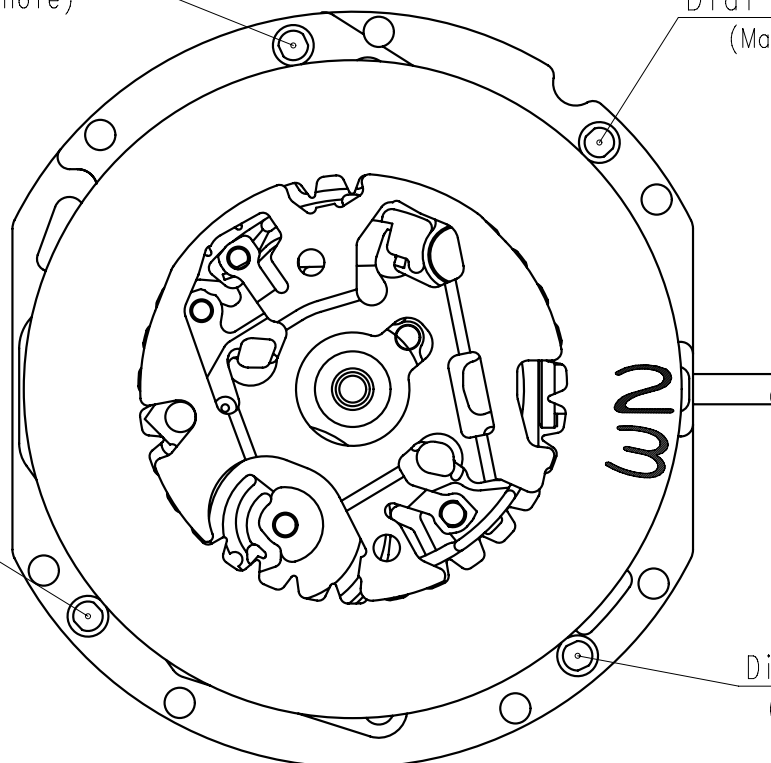
Hands type

	Mark
Type S (1)	1

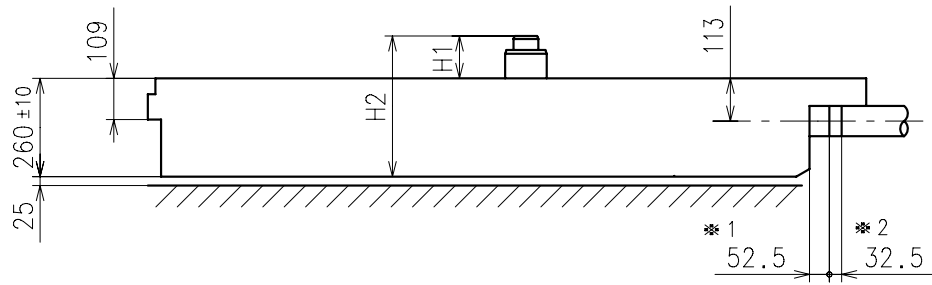
Dial leg hole C
(Sub hole)

Dial leg hole A
(Main hole)

Dial leg hole B
(Main hole)



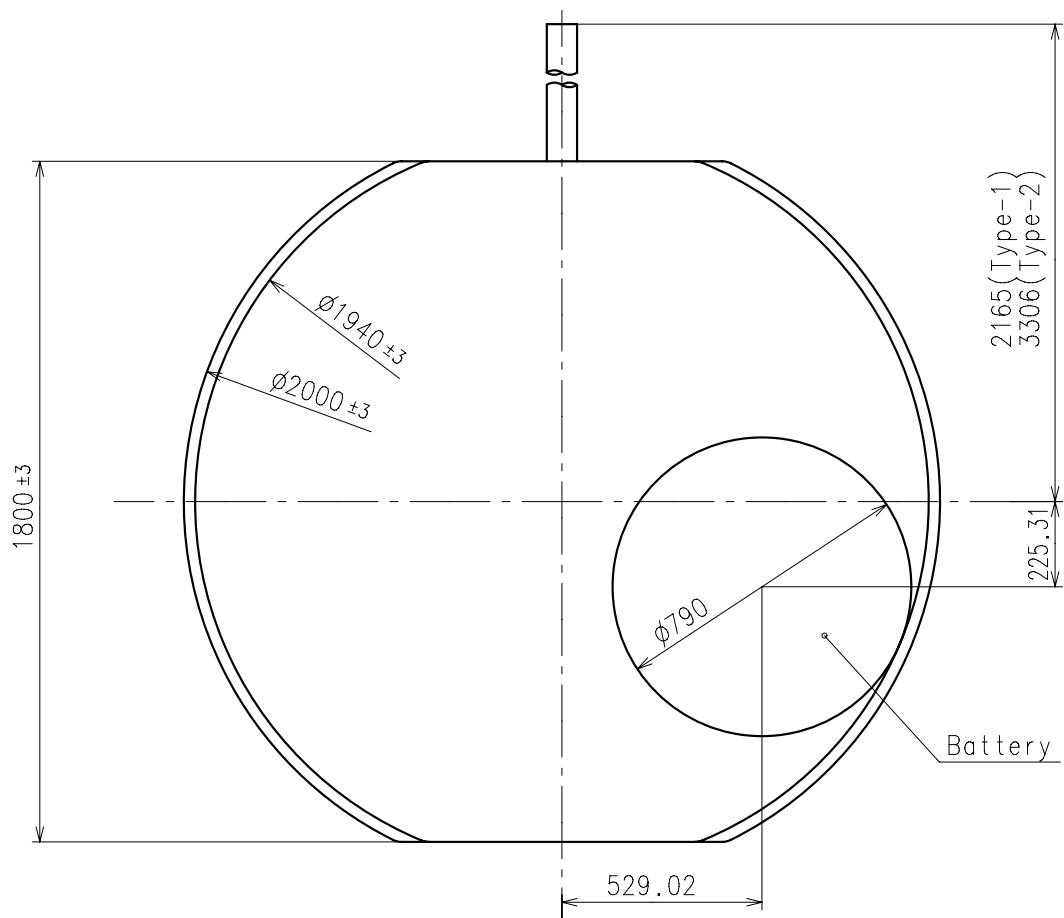
Dial leg hole D
(Sub hole)



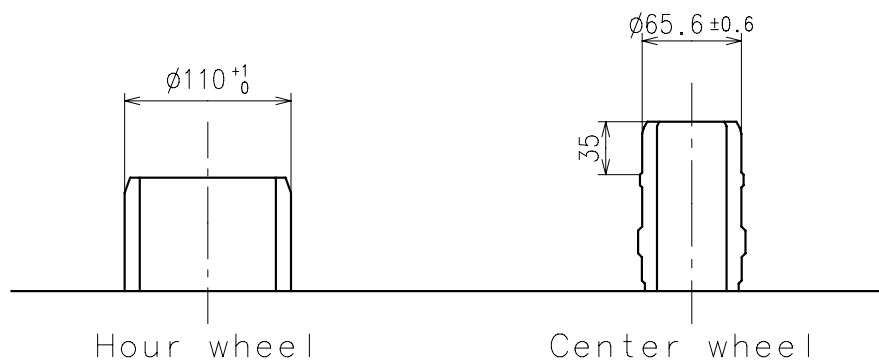
Center post		Type S (1) VX19E1*
Maximum height from dial support	H1	112
Total height including movement	H2	372

*1:First pullout stroke

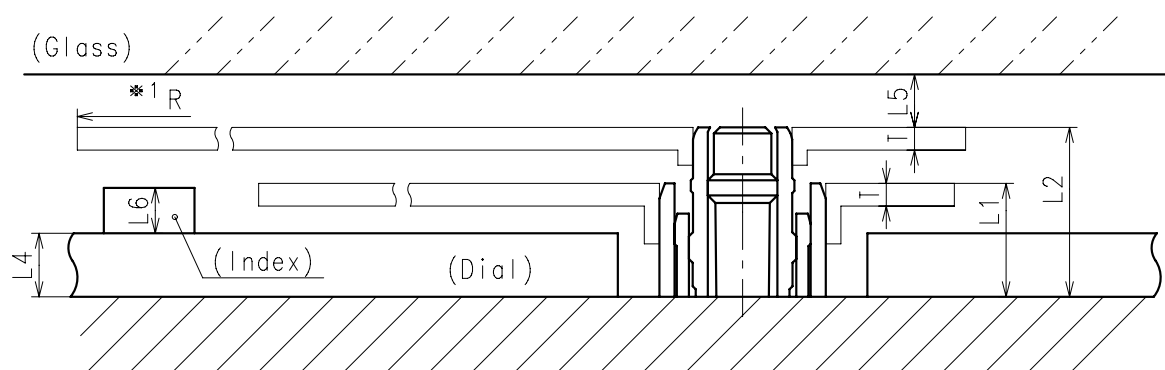
*2:Second pullout stroke



- * Hour hand unbalance $\leq 0.5\mu\text{ N}\cdot\text{m}(50\mu\text{ g}\cdot\text{m})$
- * Minute hand unbalance $\leq 0.6\mu\text{ N}\cdot\text{m}(60\mu\text{ g}\cdot\text{m})$

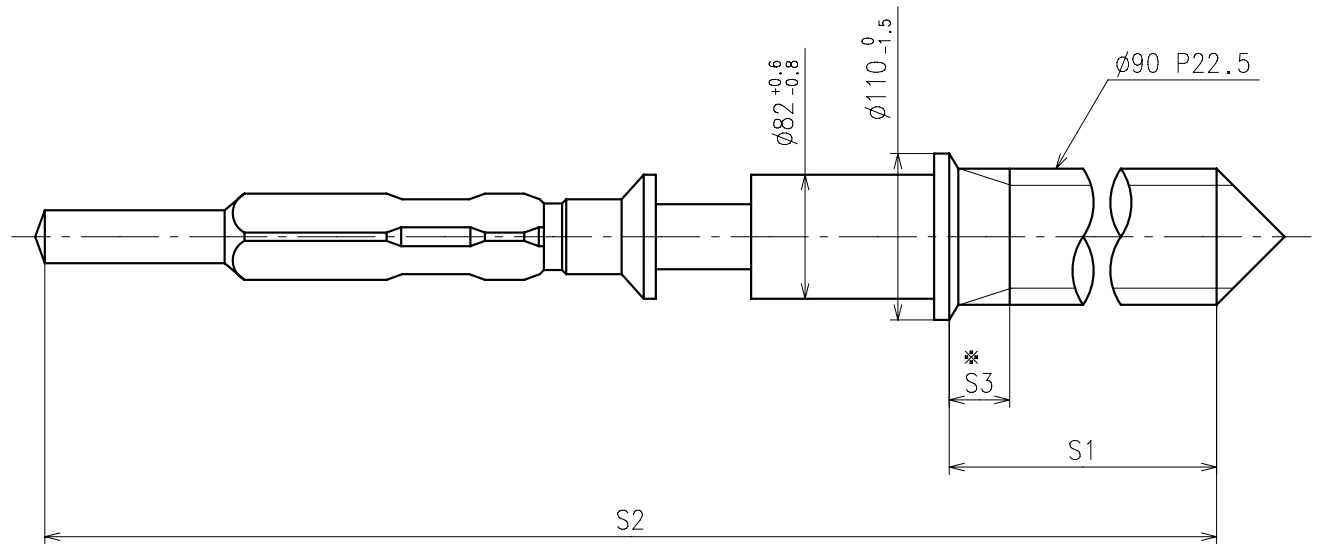


	Parts No.	
	Hour wheel	Center wheel
Type S (1) VX19E1*	0271929	0221929



	L1	L2	L4	L5	L6	T	*1 R
Type S (1) VX19E1*	75	112	40	MIN: 35	MAX: 30	15	MAX: 1250

*1: It is the size taken into consideration for hands attachment.
Please observe some standard value specified in unbalance when using long hands.

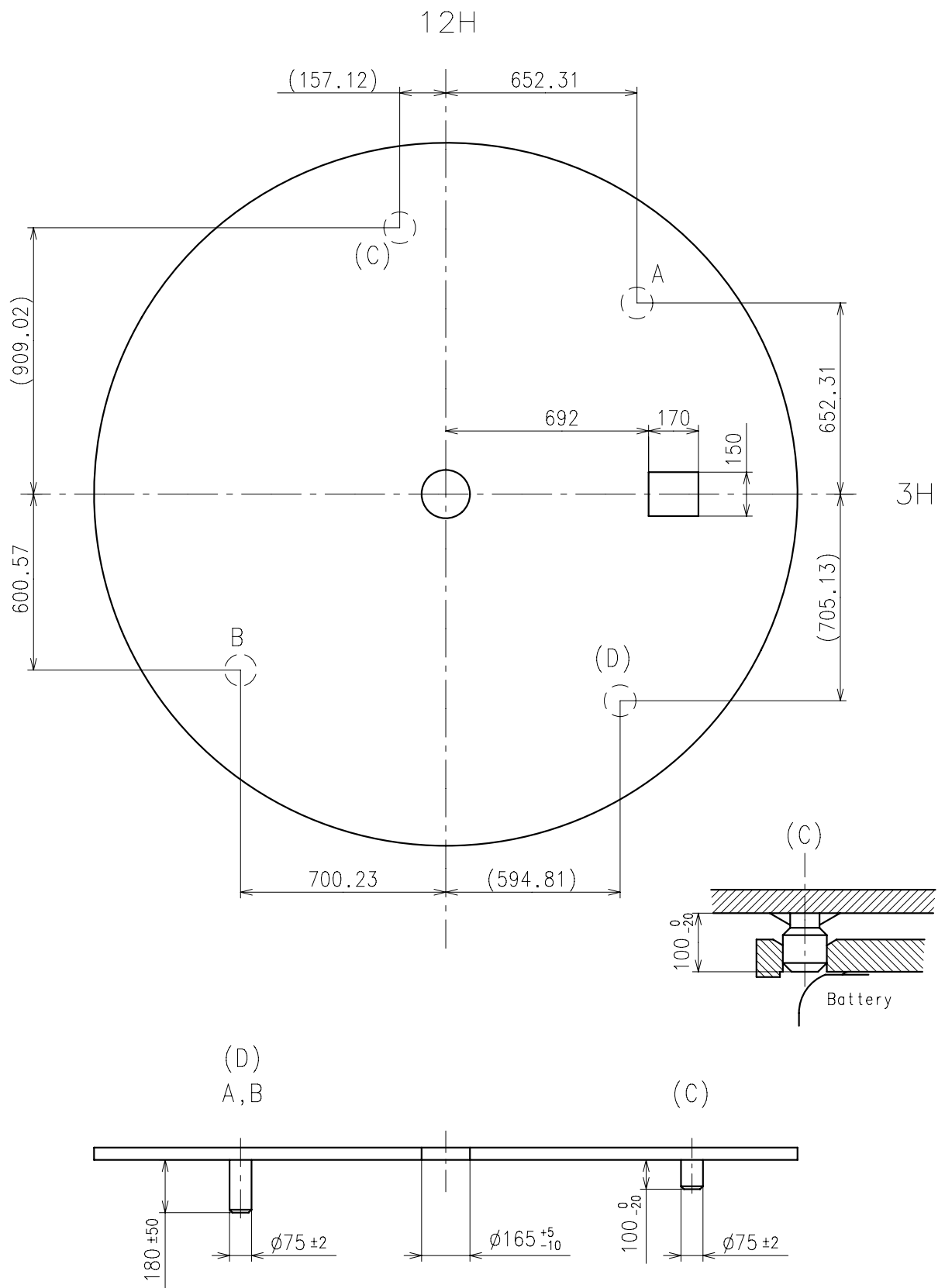


※ Not threaded

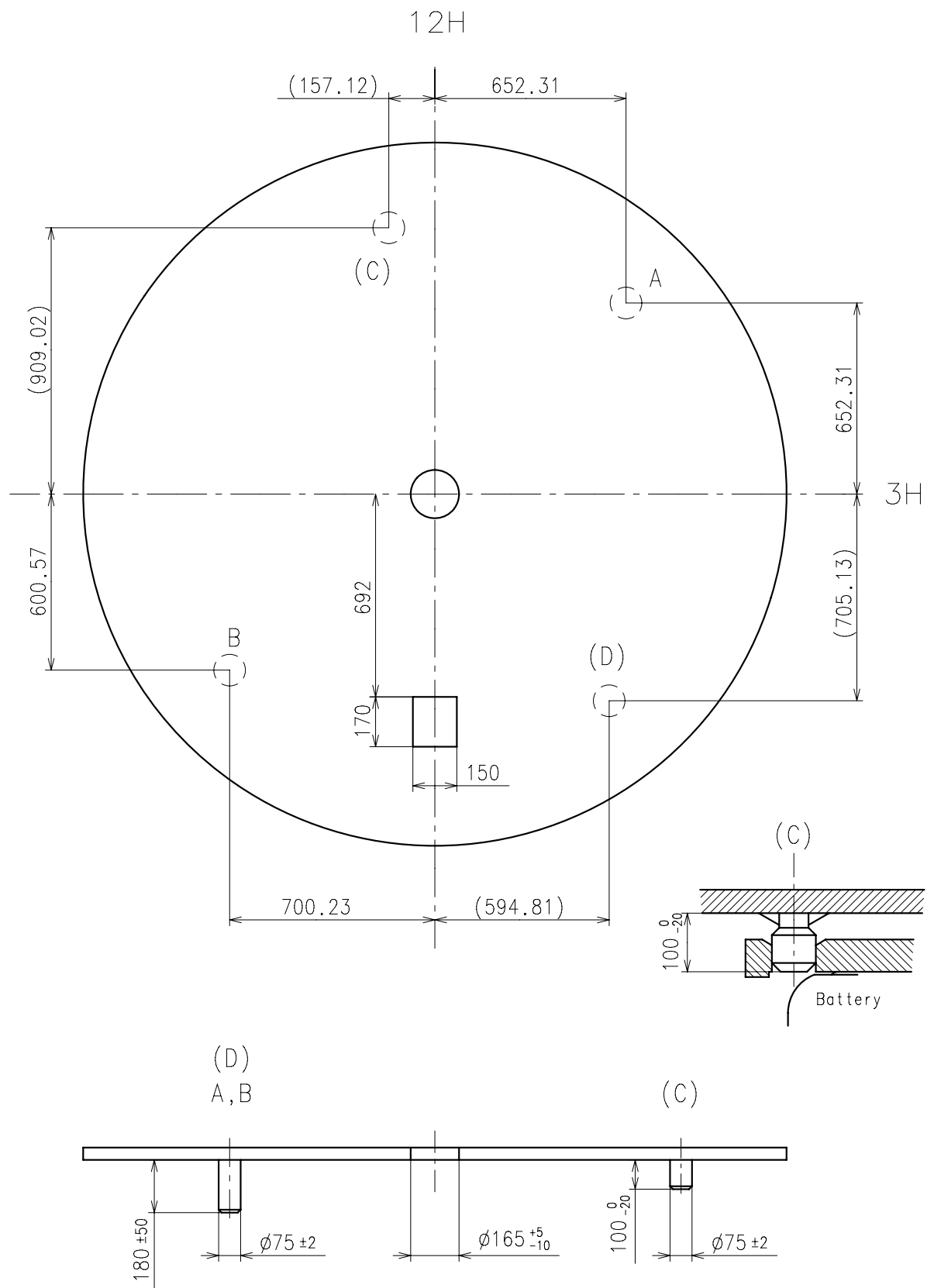
	Part No.	S1	S2	※ S3
Type-1 (Standard)	0351177	1366	1964	60
Type-2	0351578	2507	3105	650

Material : Steel

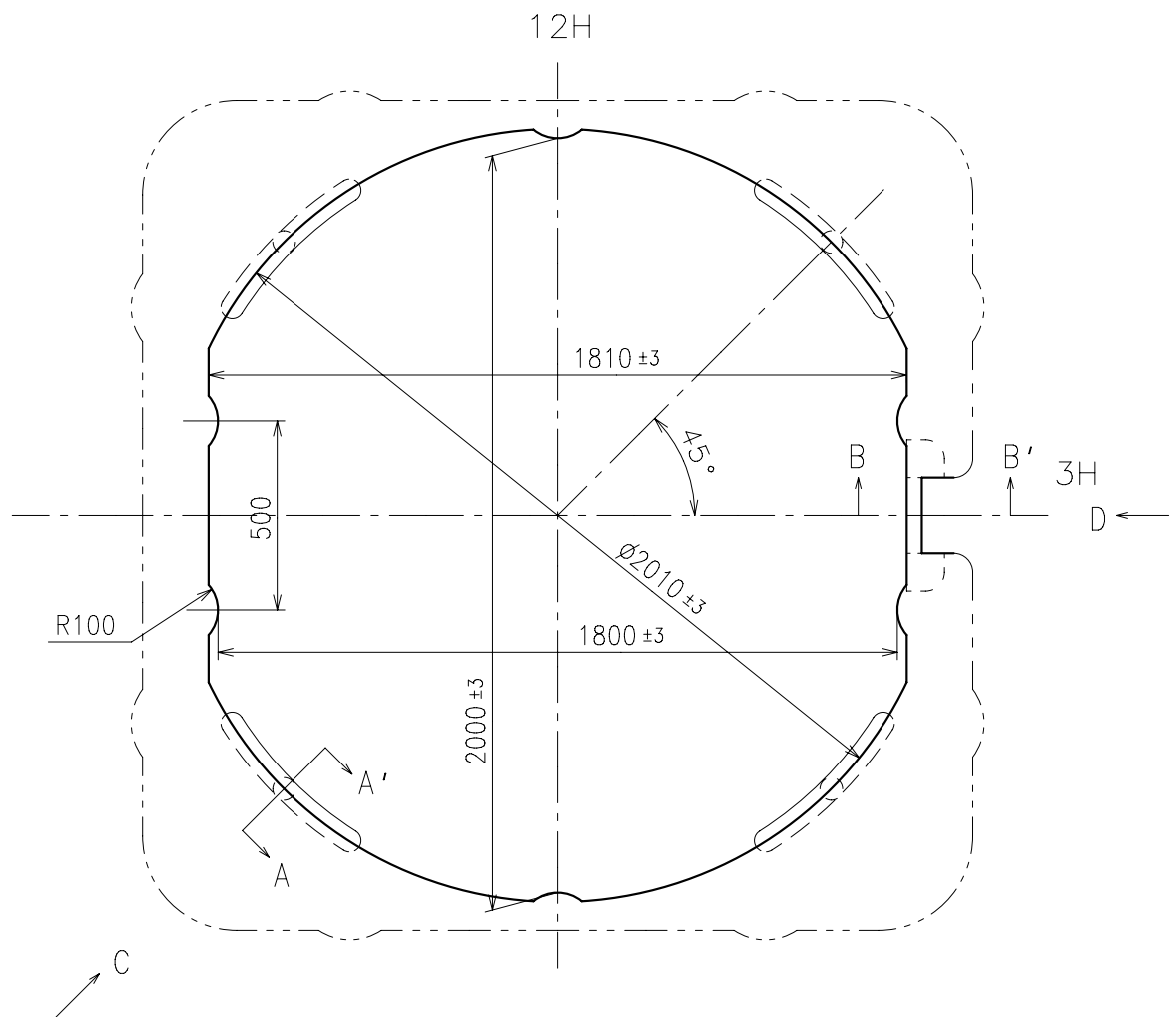
Hardness : Vickers 600±50



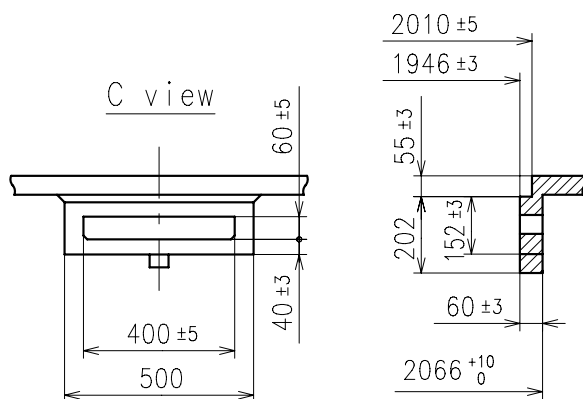
※ Use dial leg A-B or (C-D)



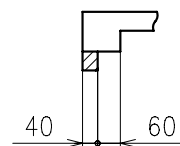
※ Use dial leg A-B or (C-D)



A-A' section



B-B' section



D view

