

Watch Movement Specification and Drawing

CALENDAR

Cal. VX32G

Movement Size

10 1/2'''

Casing Diameter

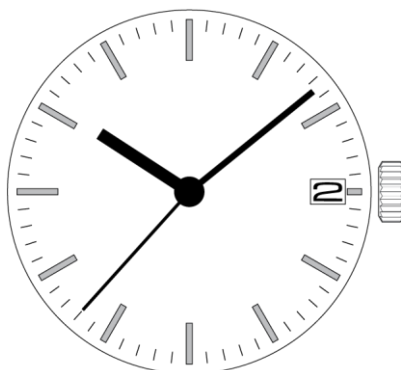
Ø 23.3mm

Height

2.62mm

Battery Life

5 years

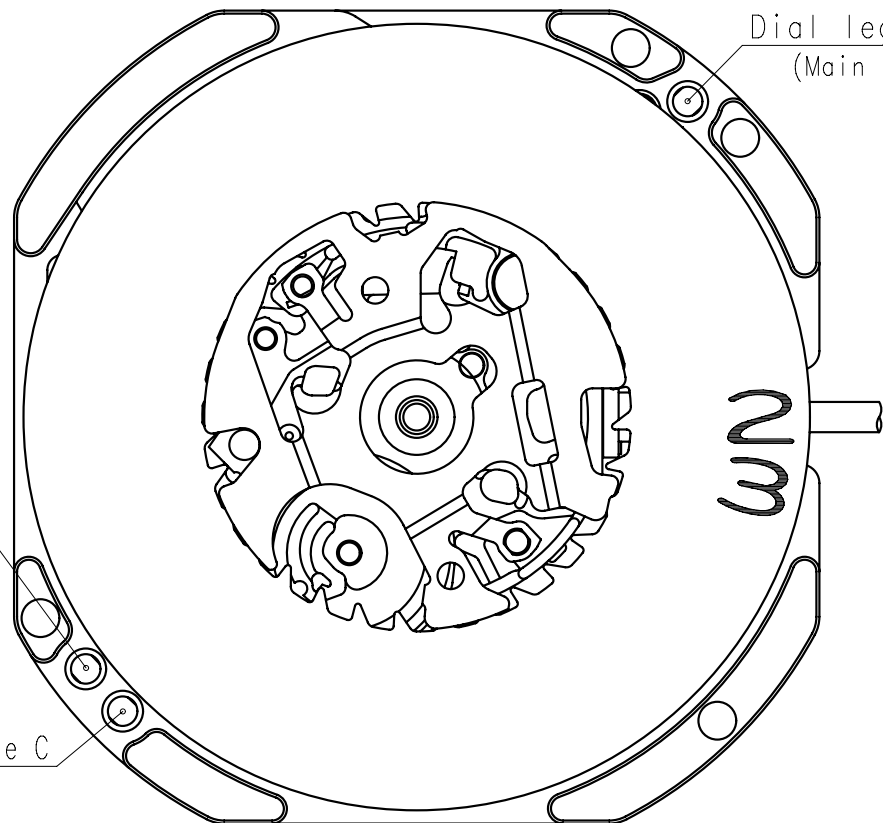
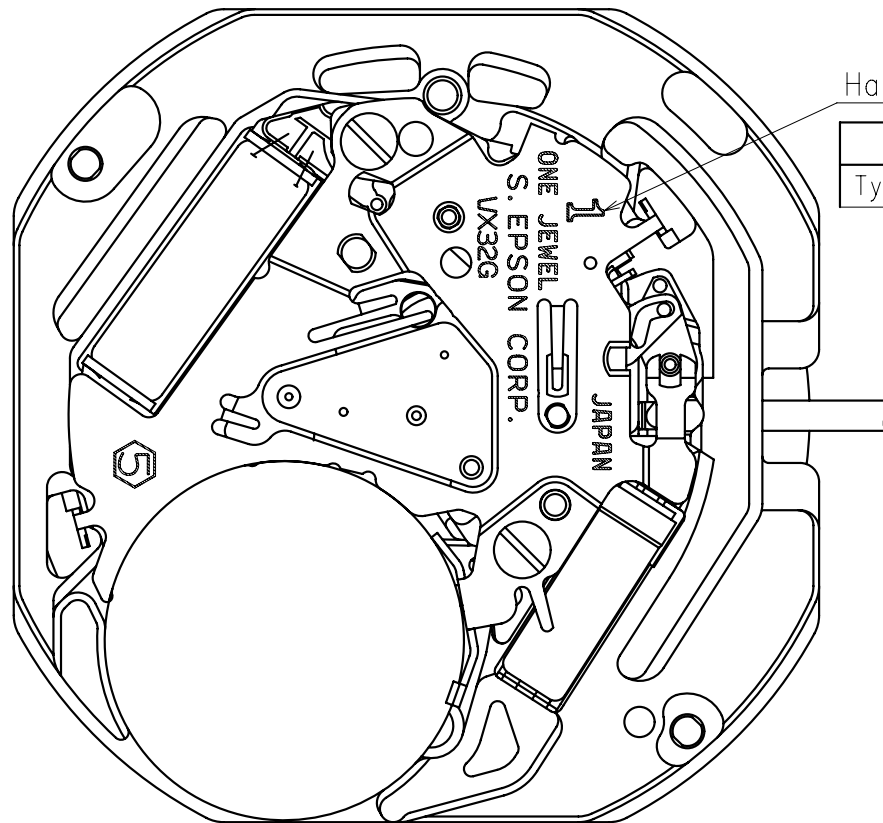


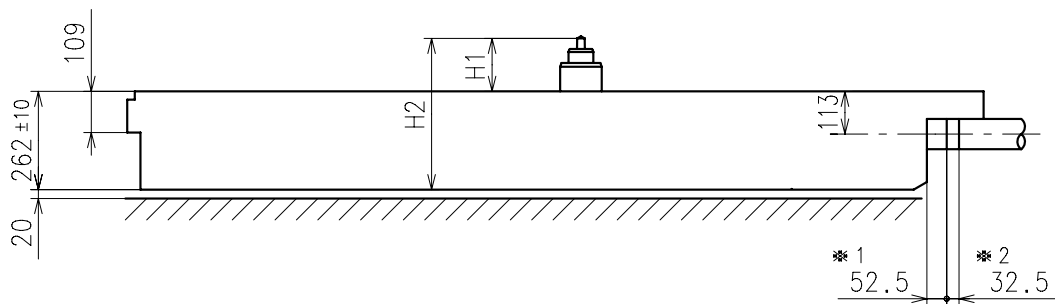
Date: 18/Sep./'20

Cal. VX32G

Items	Rev.	Page
Specifications	03	1
Appearance	01	2
Casing	01	3
Hand fitting	02	4
Hand setting stem	01	5
Dial-01	01	6-01
Dial-02	01	6-02
Casing ring	01	7

Cal.	VX32G	Specifications	Date : 18/Sep./'20
			Rev. : 03
Analog Quartz 10 1/2" Slim Movement / Three hands(H/M/S) with Calendar			
1. MOVEMENT DIMENSIONS			
Outside diameter	φ 24.00mm × 21.30mm(3-9H) × 21.50mm(12-6H)		
Casing diameter	φ 23.30mm × 21.30mm(3-9H) × 21.50mm(12-6H)		
Total height	2.62mm (including battery)		
2. TIME STANDARD			
Type of quartz oscillator	Tuning fork		
Frequency of quartz oscillator	32,768 Hz		
Accuracy	±20 seconds per month (on wrist)		
Operating temperature range	-5°C to +50°C		
Regulation device	Nil (Pre-adjusted)		
3. INDICATOR / FUNCTIONS			
3 Hands	Hour / Minute / Second		
Calendar	Instant setting device for date calendar		
Reset switch			
Power depletion warning function	(Second hand moves at 2-second intervals)		
Setting mechanism	Crown at normal position	: Free	
	Crown pulled out 1st click	: Instant date change	
	Crown pulled out 2nd click	: Time setting / Reset	
4. FEATURES			
Jewels	1 Jewel		
Anti-magnetism	Over 1600A/m (Direct current magnetic field)		
Maximum unbalance of hands	Hour hand	: 0.5 μ N•m	
	Minute hand	: 0.6 μ N•m	
	Second hand	: 0.07 μ N•m	
5. BATTERY			
Type / Size	Silver oxide battery / φ 9.5mm × t 2.0mm		
Recommended battery	SR920SW (Maxell, Murata, Seizaiken)		
Nominal voltage	1.55 V		
Battery life	Approx. 5 years		
Driving current consumption	Approx. 0.90 μ A		
Operation stopping voltage	1.1 V		
6. SEPARATED PARTS (Parts code)			
Hand setting stem	0351177 or 0351578		
Battery	SR920SW		
7. TEST OF ACCURACY			
Equipment to be used	SEIKO quartz tester QT-99, Greiner quartz timer-C , Witschi Q-tester 4000		
Duration of measurement	10 seconds		
Microphone to be used	Electromagnetic detection type		
All specifications are subject to change without notice.			

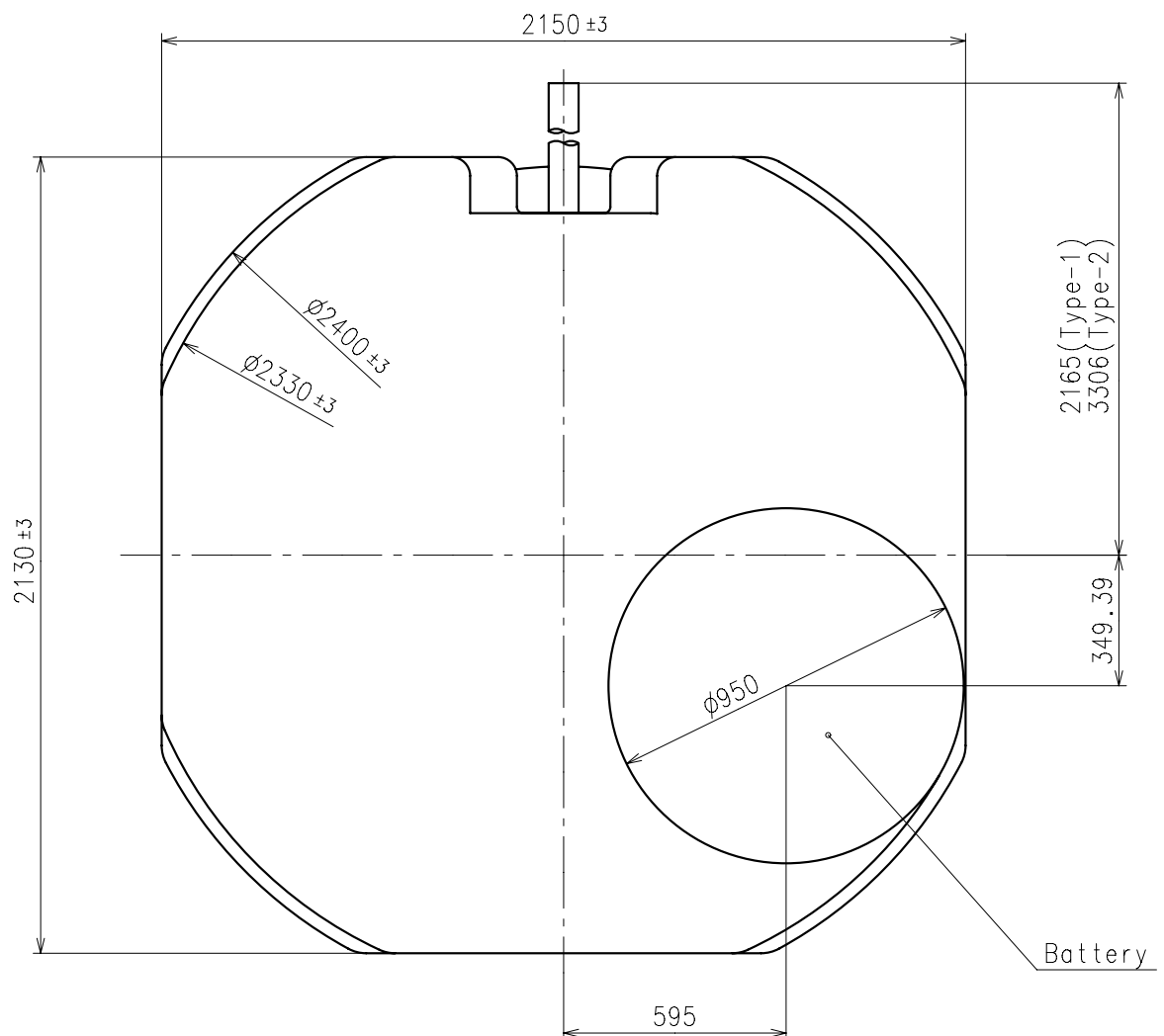




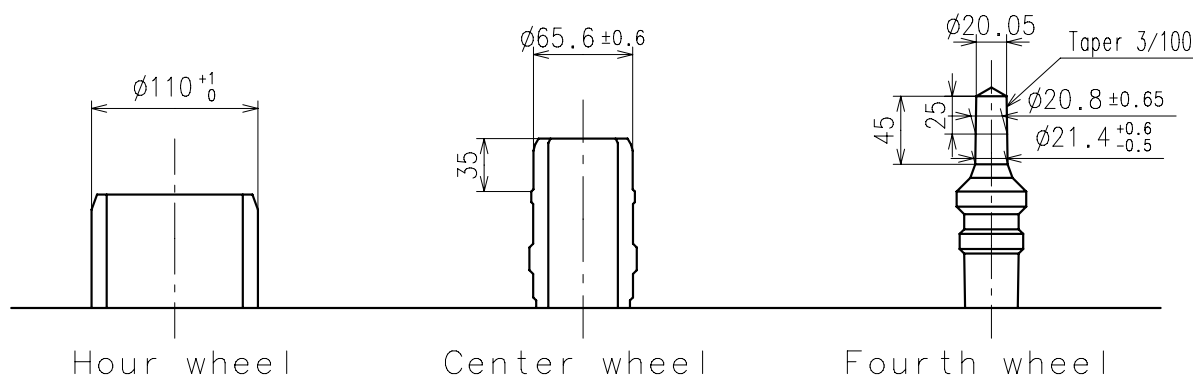
Center post		Type S (1) VX32G1*
Maximum height from dial support	H1	140
Total height including movement	H2	402

*1:First pullout stroke

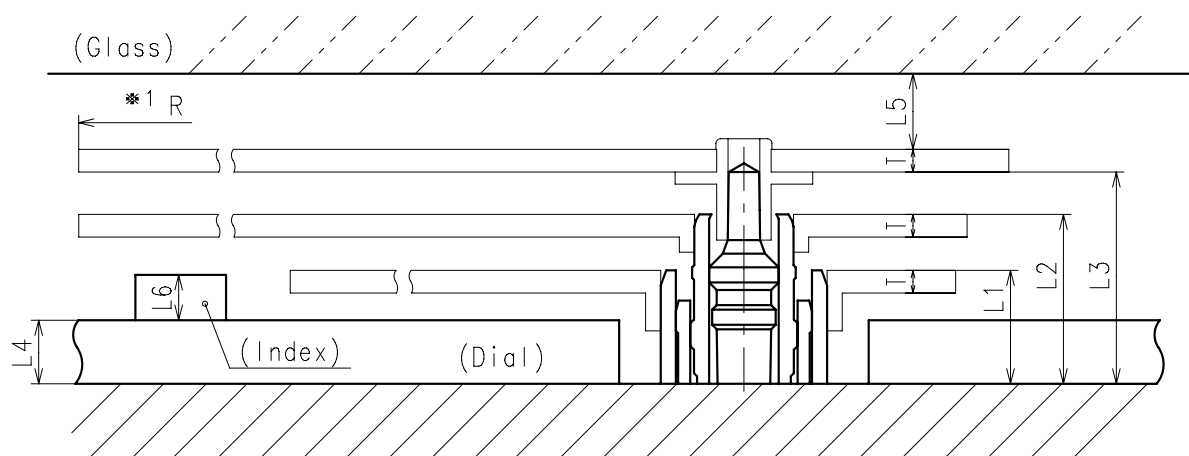
*2:Second pullout stroke



- * Hour hand unbalance $\leq 0.5\mu\text{ N}\cdot\text{m}$ ($50\mu\text{ g}\cdot\text{m}$)
- * Minute hand unbalance $\leq 0.6\mu\text{ N}\cdot\text{m}$ ($60\mu\text{ g}\cdot\text{m}$)
- * Second hand unbalance $\leq 0.07\mu\text{ N}\cdot\text{m}$ ($7\mu\text{ g}\cdot\text{m}$)

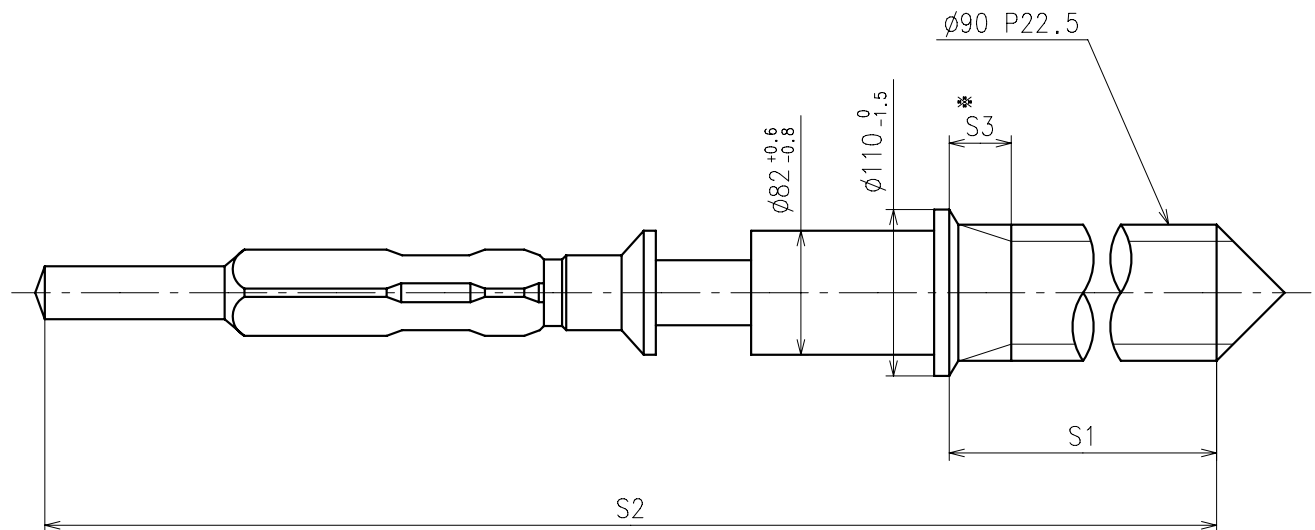


	Parts No.		
	Hour wheel	Center wheel	Fourth wheel
Type S (1) VX32G1*	0271929	0221929	0241929



	L1	L2	L3	L4	L5	L6	T	*1 R
Type S (1) VX32G1*	75	112	140	40	MIN: 50	MAX: 30	15	MAX: 1250

*1: It is the size taken into consideration for hands attachment.
Please observe some standard value specified in unbalance when using long hands.

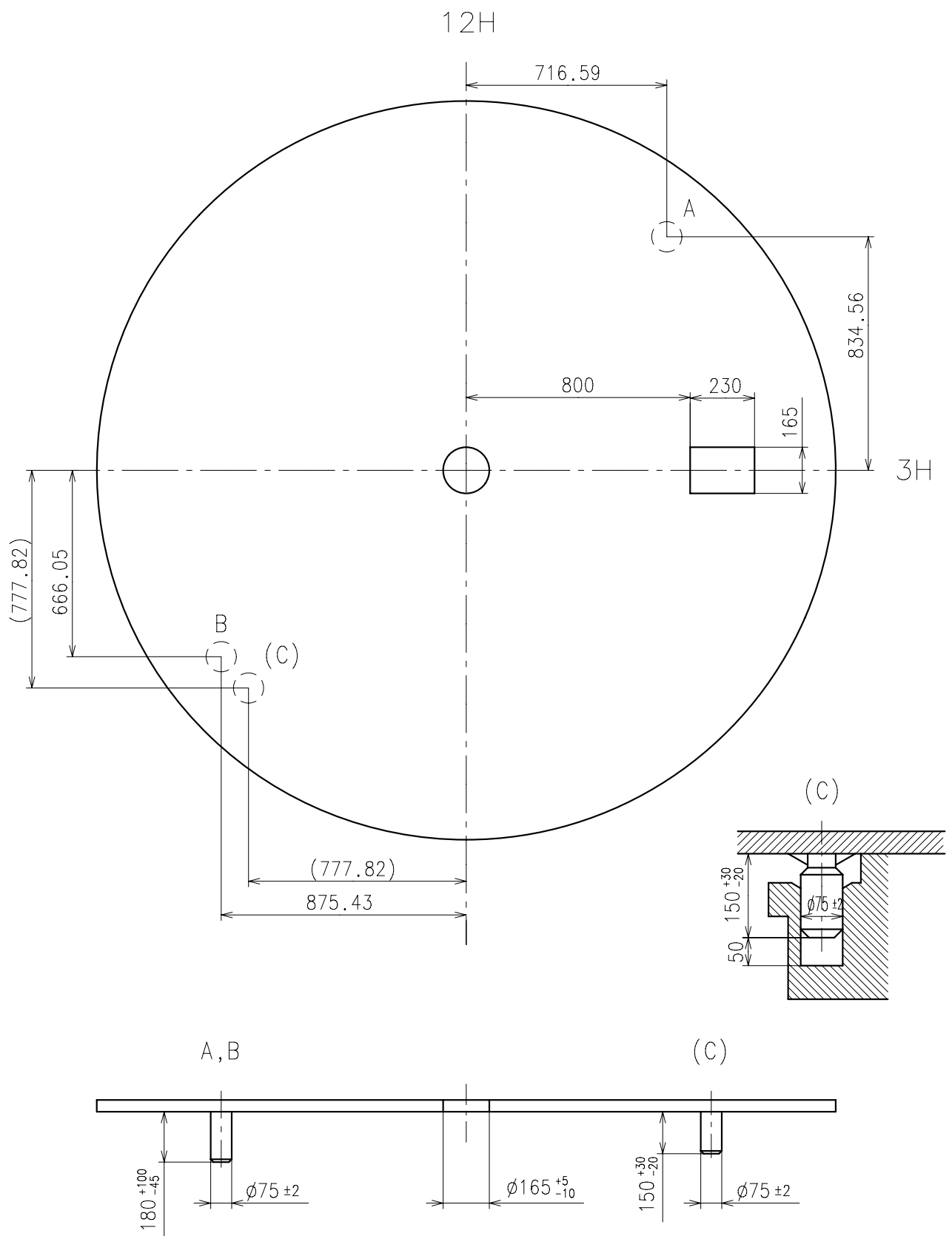


※ Not threaded

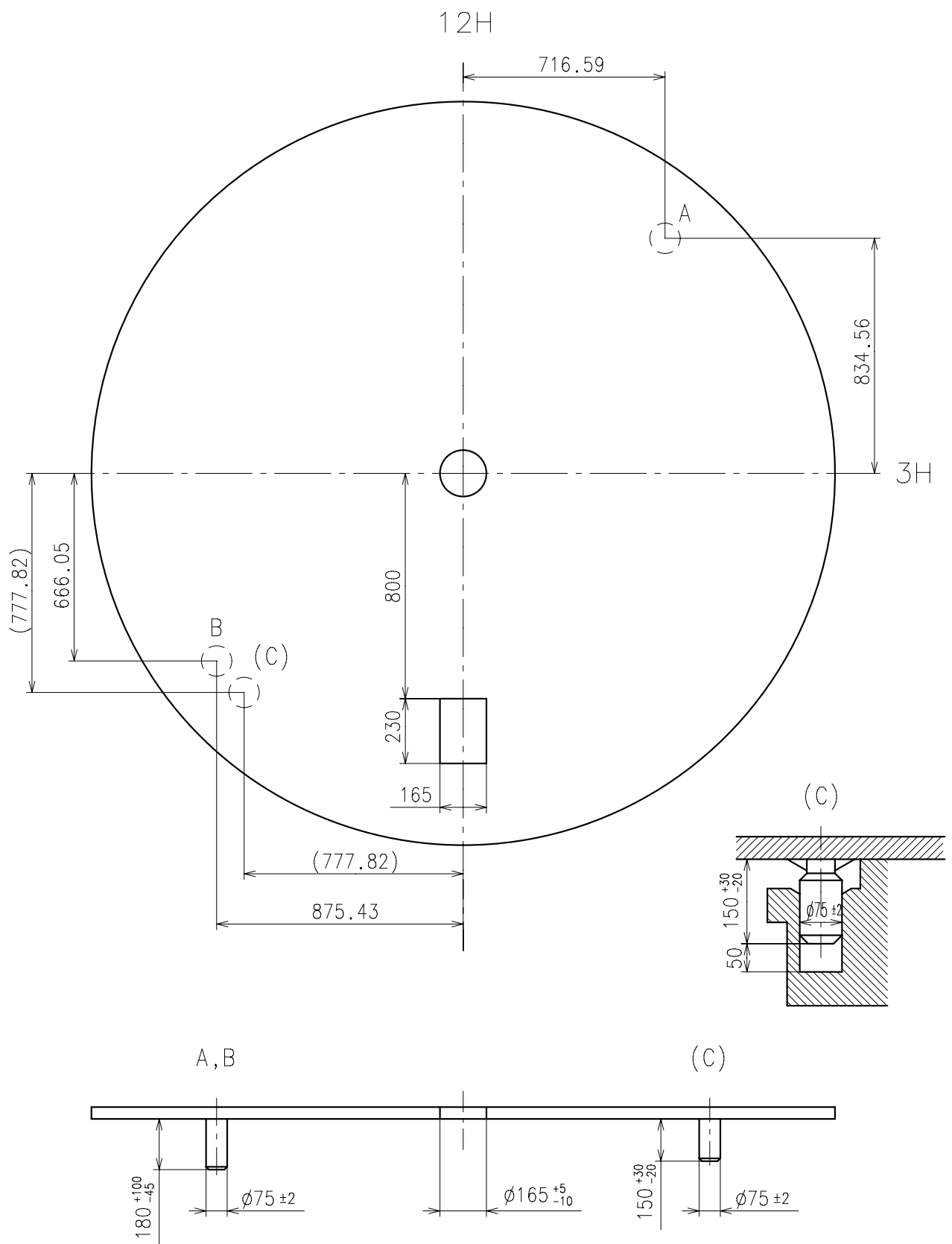
	Part No.	S1	S2	※ S3
Type-1 (Standard)	0351177	1366	1964	60
Type-2	0351578	2507	3105	650

Material : Steel

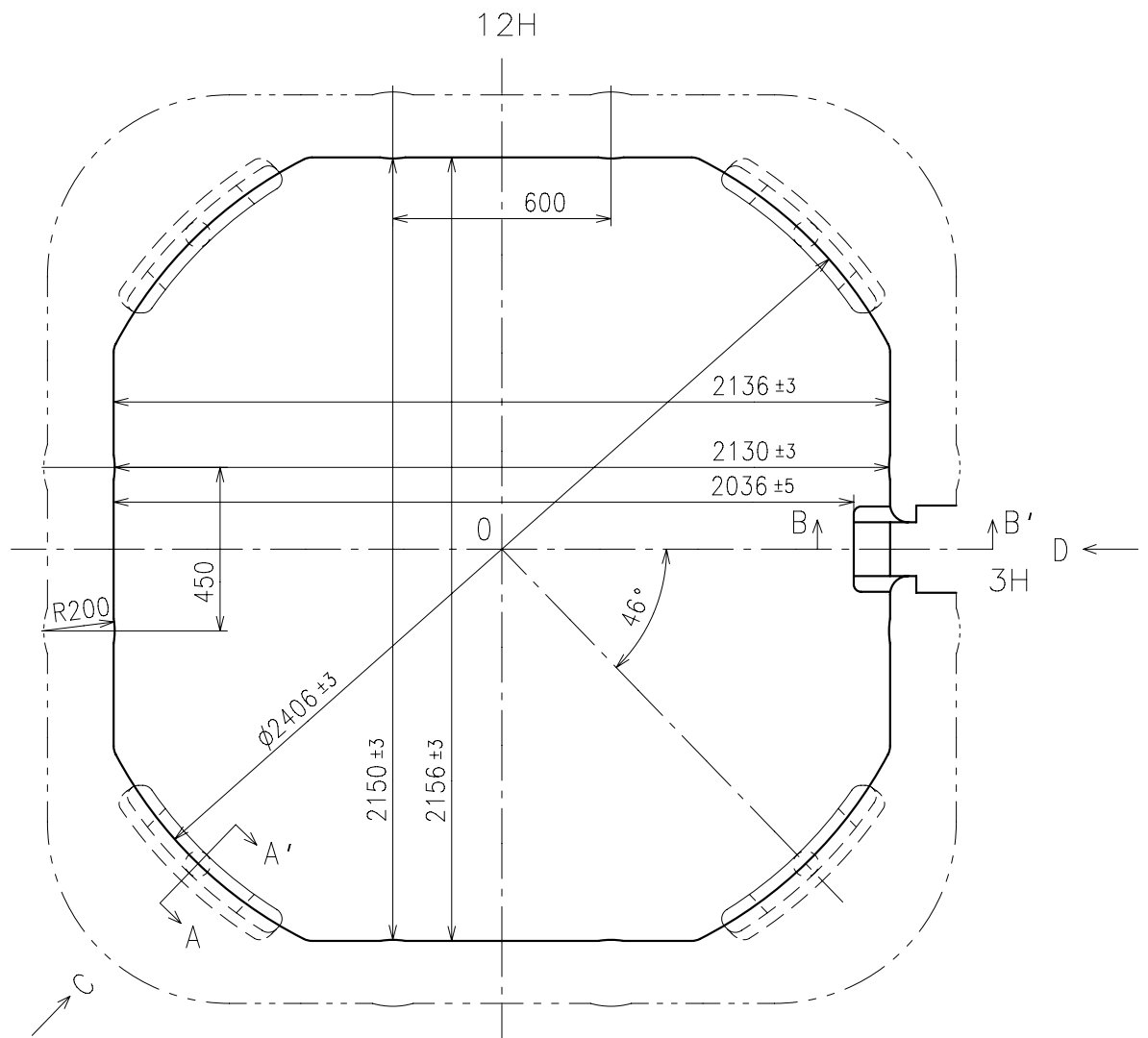
Hardness : Vickers 600±50



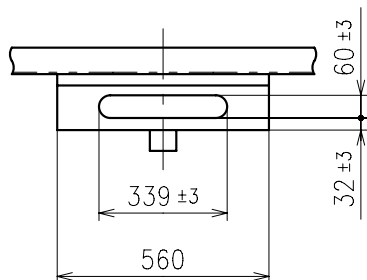
※ Use dial leg A-B or (A-C)



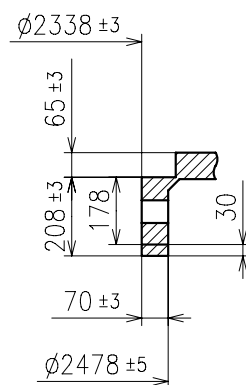
※ Use dial leg A-B or (A-C)



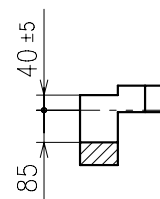
C view



A-A' section



B-B' section



D view

