

Watch Movement Specification and Drawing

CALENDAR

Cal. VX43E

Movement Size

11 1/2'''

Casing Diameter

Ø 25.6mm

Height

2.98mm

Battery Life

3 years

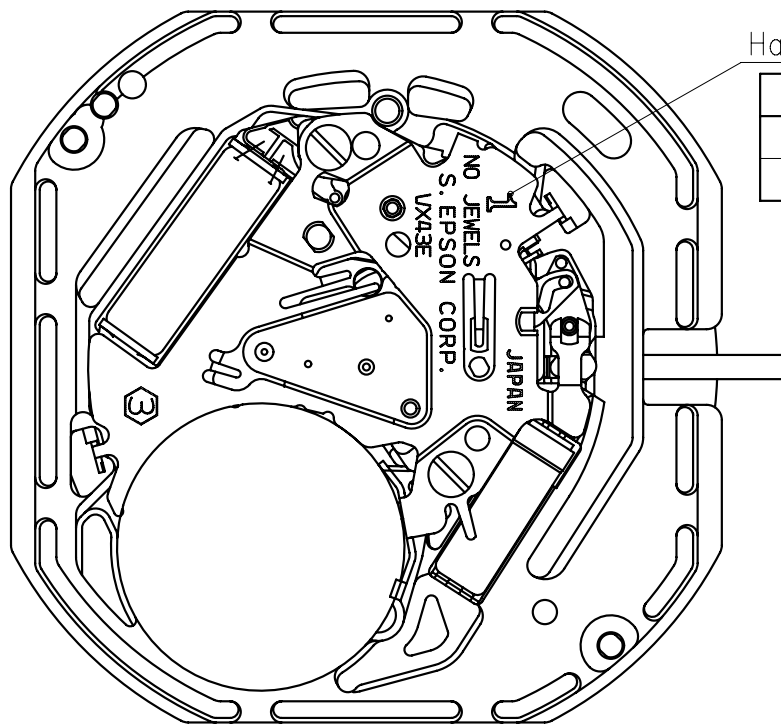


Date: 4/Aug./'23

Cal. VX43E

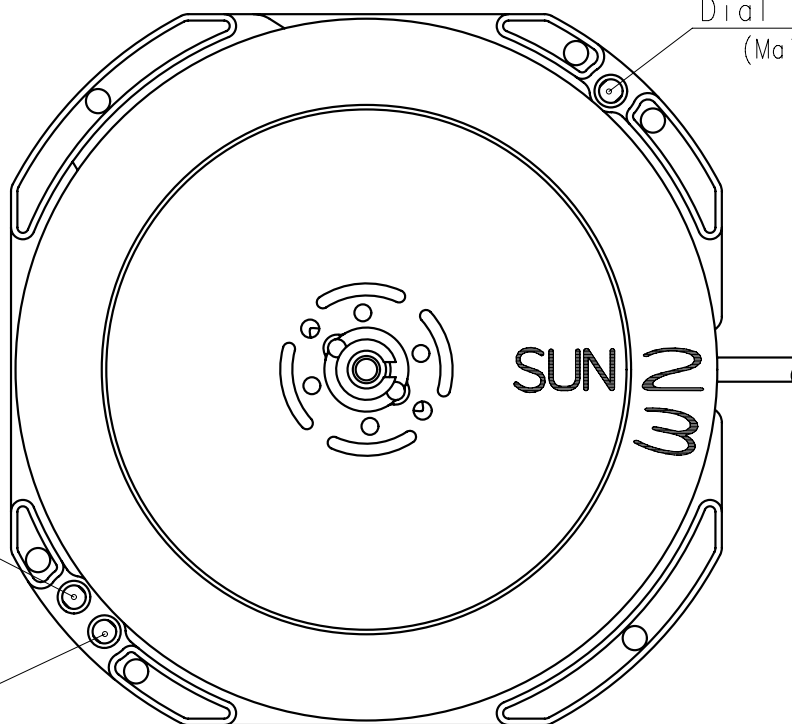
Items	Rev.	Page
Specifications	04	1
Appearance	04	2
Casing	05	3
Hand fitting	05	4
Hand setting stem	04	5
Dial-01	02	6-01
Dial-05	01	6-05
Dial-07	02	6-07
Dial-08	02	6-08
Dial-09	02	6-09
Dial-10	01	6-10
Dial-11	01	6-11
Dial-12	01	6-12
Dial-14	01	6-14
Dial-15	00	6-15
Dial-16	00	6-16
Casing ring	02	7

Cal.	VX43E	Specifications	Date : 18/Sep./'20
			Rev. : 04
Analog Quartz 11 1/2" Slim Movement / Three hands (H/M/S) with Day / Date			
1. MOVEMENT DIMENSIONS			
Outside diameter	φ 26.40mm × 23.50mm(3-9H) × 23.50mm(12-6H)		
Casing diameter	φ 25.60mm × 21.90mm(3-9H) × 23.50mm(12-6H)		
Total height	2.98mm (including battery)		
2. TIME STANDARD			
Type of quartz oscillator	Tuning fork		
Frequency of quartz oscillator	32,768 Hz		
Accuracy	±20 seconds per month (on wrist)		
Operating temperature range	-5°C to +50°C		
Regulation device	Nil (Pre-adjusted)		
3. INDICATOR / FUNCTIONS			
3 Hands	Hour / Minute / Second		
Day / Date	Instant setting device for day / date calendar		
Reset switch			
Setting mechanism	Crown at normal position	: Free	
	Crown pulled out 1st click	: Instant day / date change	
	Crown pulled out 2nd click	: Time setting / Reset	
4. FEATURES			
Jewels	0 Jewels		
Anti-magnetism	Over 1600A/m (Direct current magnetic field)		
Maximum unbalance of hands	Hour hand	: 0.5 μ N·m	
	Minute hand	: 0.6 μ N·m	
	Second hand	: 0.07 μ N·m	
5. BATTERY			
Type / Size	Silver oxide battery / φ 9.5mm × t 2.0mm		
Recommended battery	SR920SW (Maxell, Murata, Seizaiken)		
Nominal voltage	1.55 V		
Battery life	Approx. 3 years		
Driving current consumption	Approx. 1.6 μ A		
Operation stopping voltage	1.1 V		
6. SEPARATED PARTS (Parts code)			
Hand setting stem	0351177 or 0351578		
Battery	SR920SW		
7. TEST OF ACCURACY			
Equipment to be used	SEIKO quartz tester QT-99, Greiner quartz timer-C , Witschi Q-tester 4000		
Duration of measurement	10 seconds		
Microphone to be used	Electromagnetic detection type		
All specifications are subject to change without notice.			



Hands type

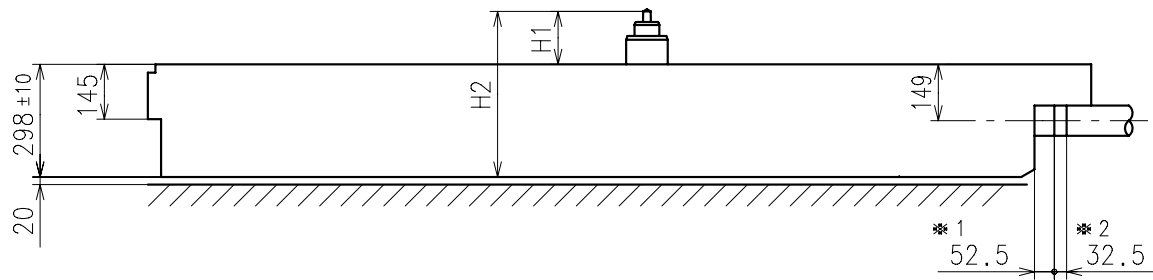
	Mark
Type S (1)	1
Type M (2)	2



Dial leg hole A
(Main hole)

Dial leg hole B
(Main hole)

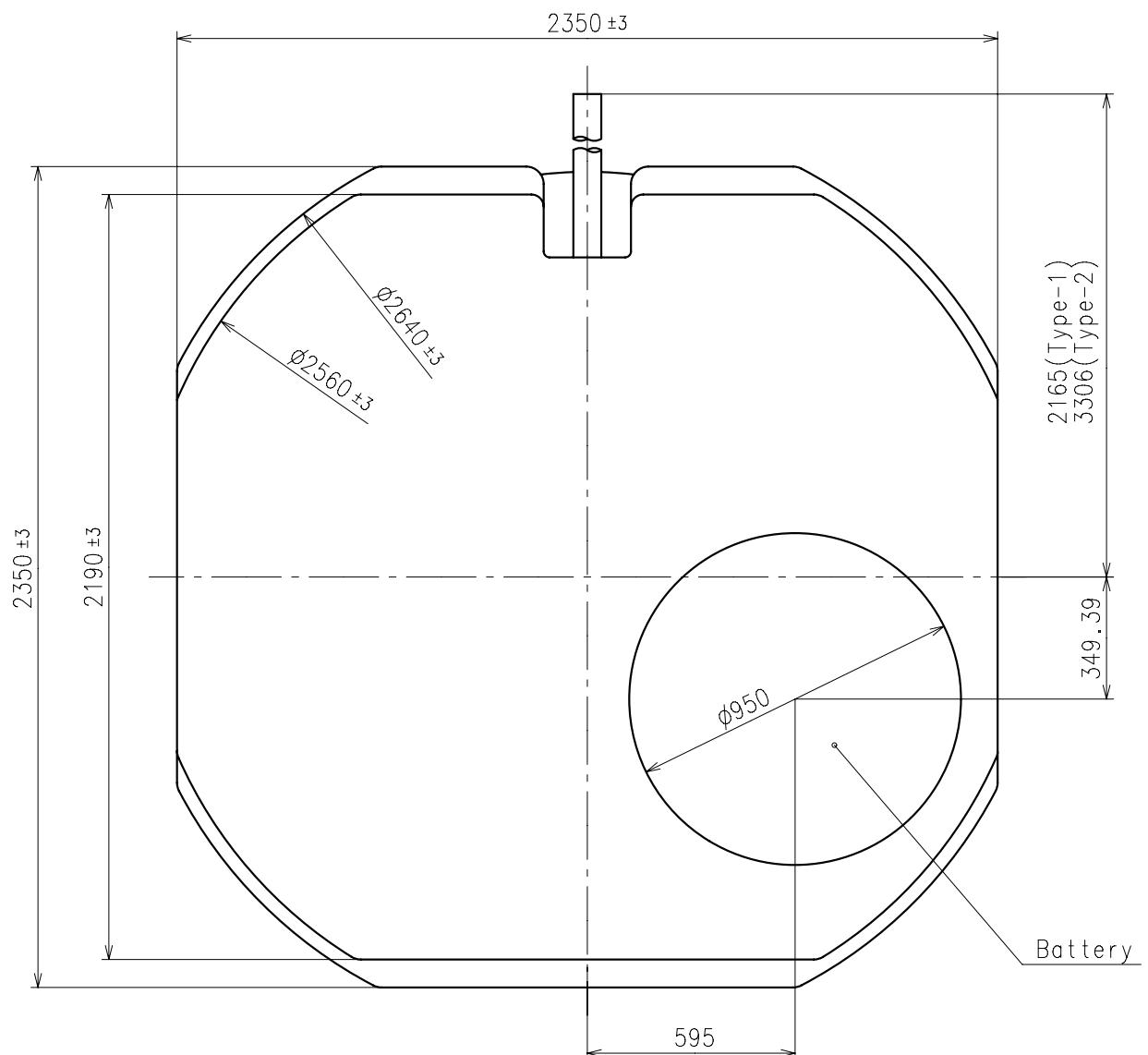
Dial leg hole C
(Sub hole)



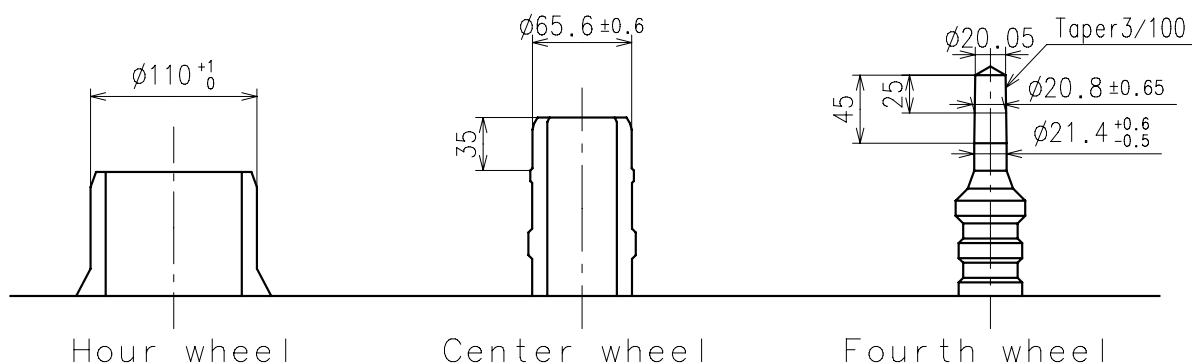
Center post		Type S (1) VX43E1**	Type M (2) VX43E2**
Maximum height from dial support	H1	146	182
Total height including movement	H2	444	480

*1:First pullout stroke

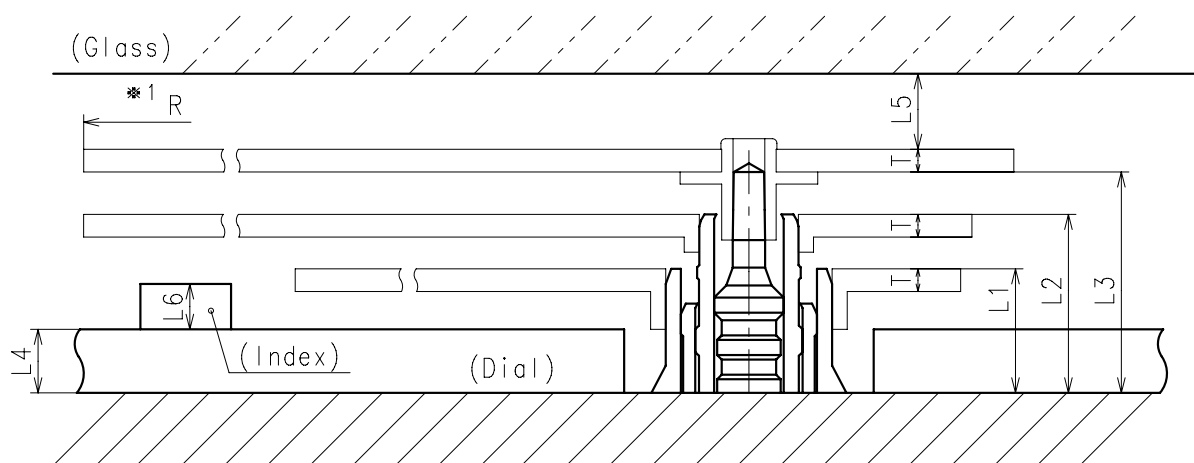
*2:Second pullout stroke



- * Hour hand unbalance $\leq 0.5\mu\text{ N}\cdot\text{m}$ ($50\mu\text{ g}\cdot\text{m}$)
- * Minute hand unbalance $\leq 0.6\mu\text{ N}\cdot\text{m}$ ($60\mu\text{ g}\cdot\text{m}$)
- * Second hand unbalance $\leq 0.07\mu\text{ N}\cdot\text{m}$ ($7\mu\text{ g}\cdot\text{m}$)

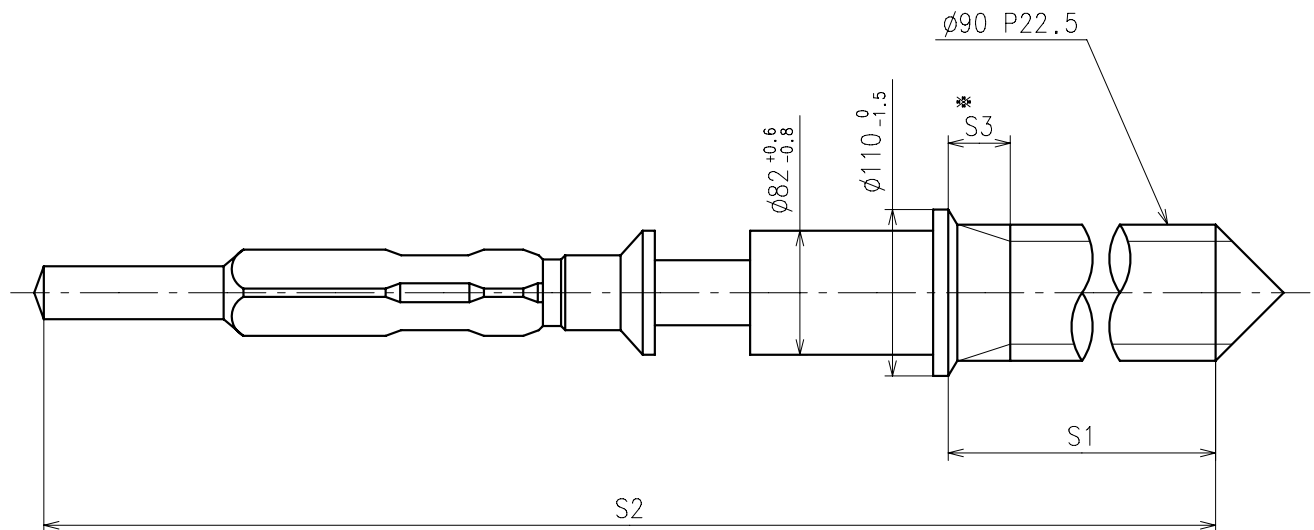


	Parts No.		
	Hour wheel	Center wheel	Fourth wheel
Type S (1) VX43E1**	0271904	0221904	0241904
Type M (2) VX43E2**	0271934	0221934	0241934



	L1	L2	L3	L4	L5	L6	T	*1 R
Type S (1) VX43E1**	82	118	146	40	MIN: 50	MAX: 35	15	MAX: 1250
Type M (2) VX43E2**	105	154	182	40	MIN: 50	MAX: 60	15	MAX: 1250

*1: It is the size taken into consideration for hands attachment.
Please observe some standard value specified in unbalance when using long hands.

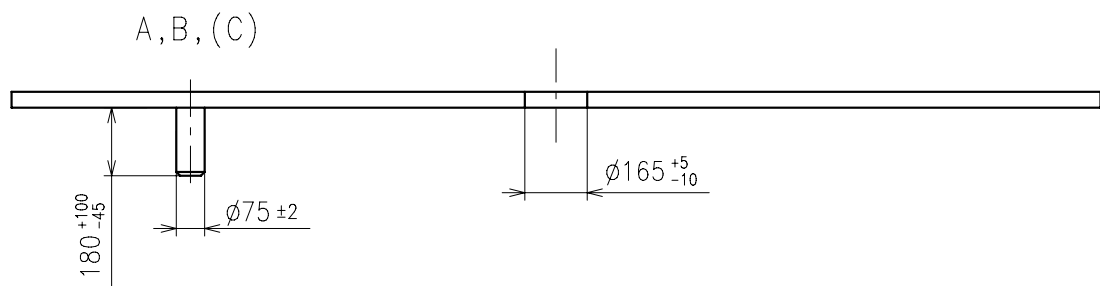
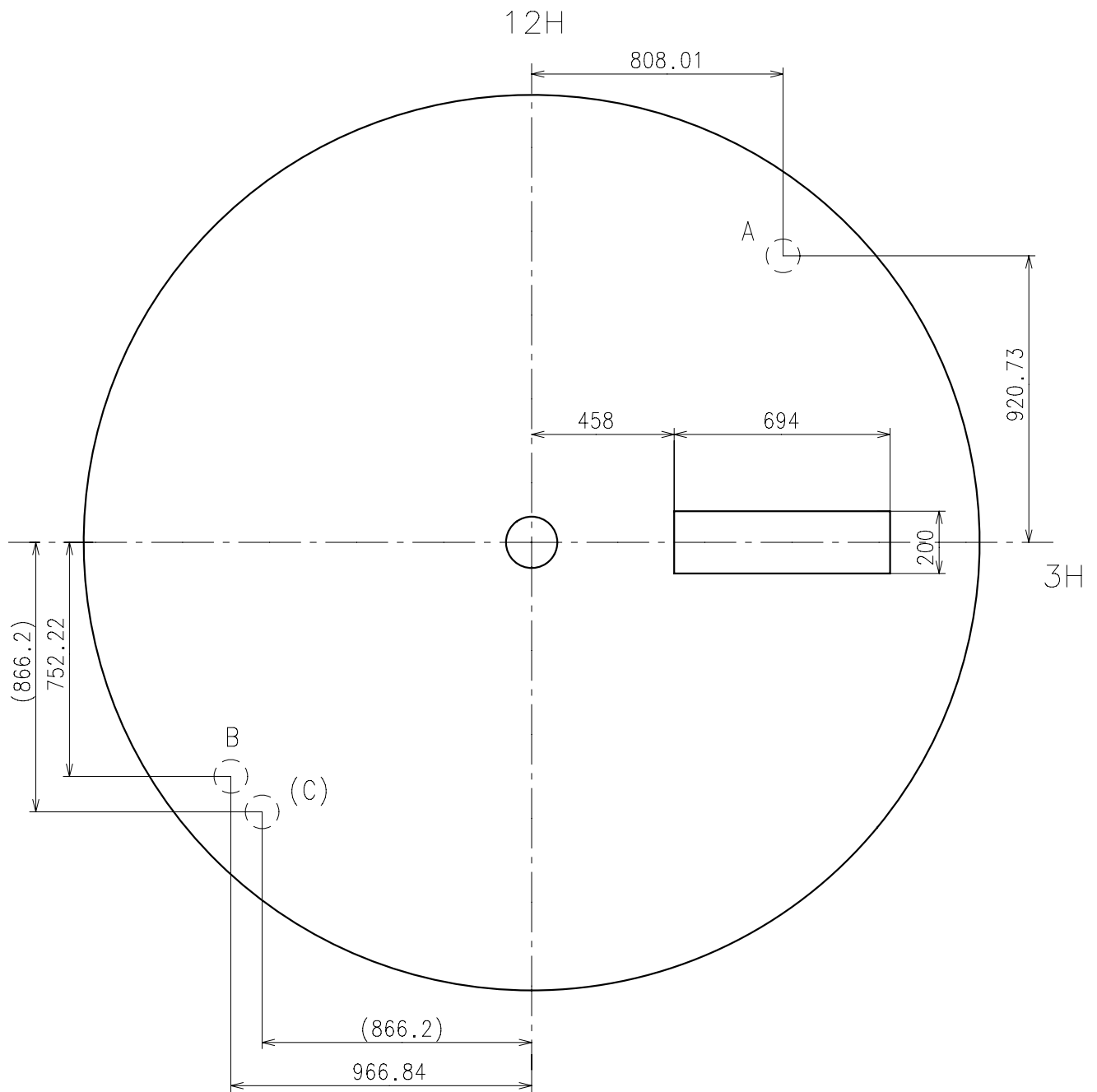


※ Not threaded

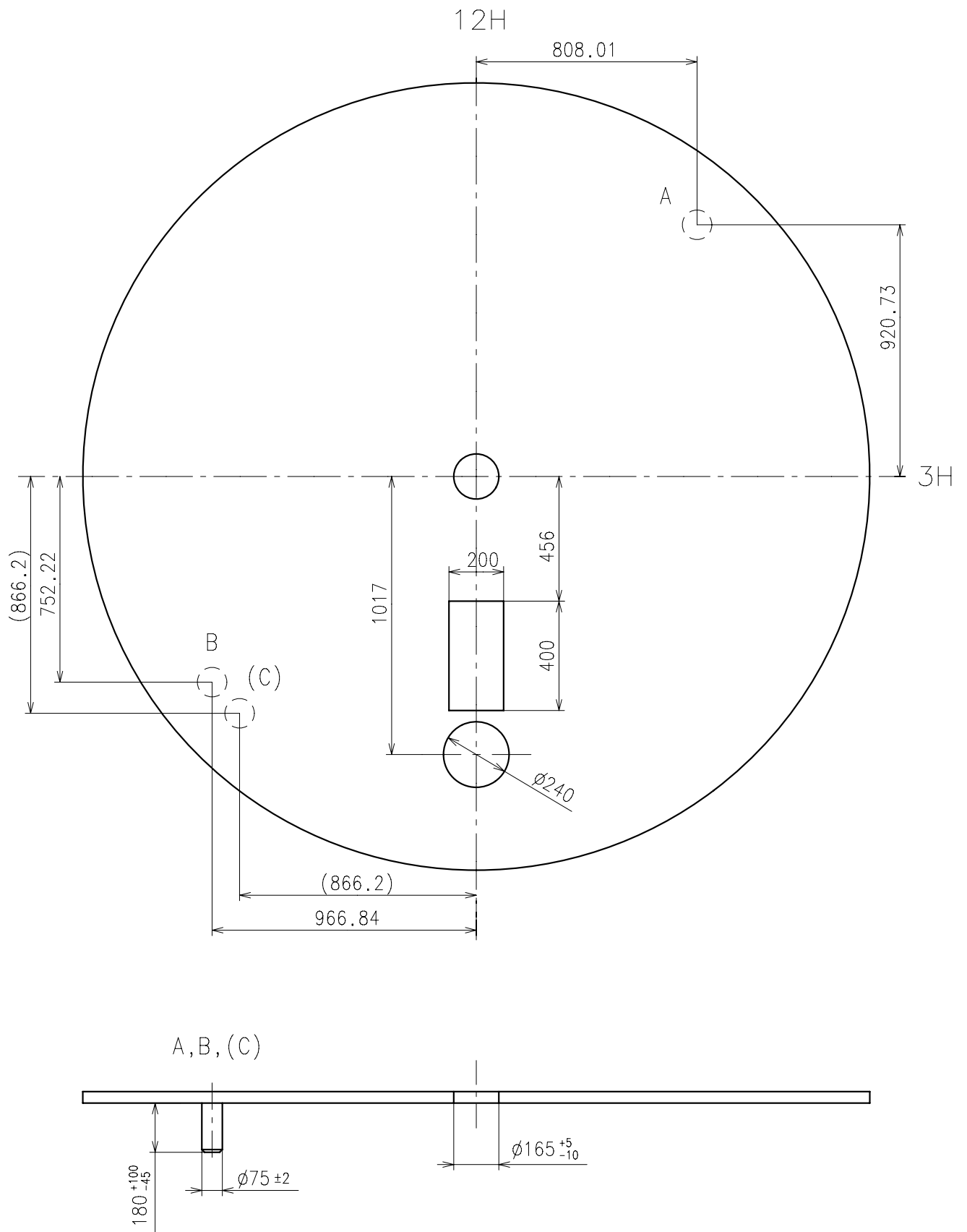
	Part No.	S1	S2	※ S3
Type-1 (Standard)	0351177	1366	1964	60
Type-2	0351578	2507	3105	650

Material : Steel

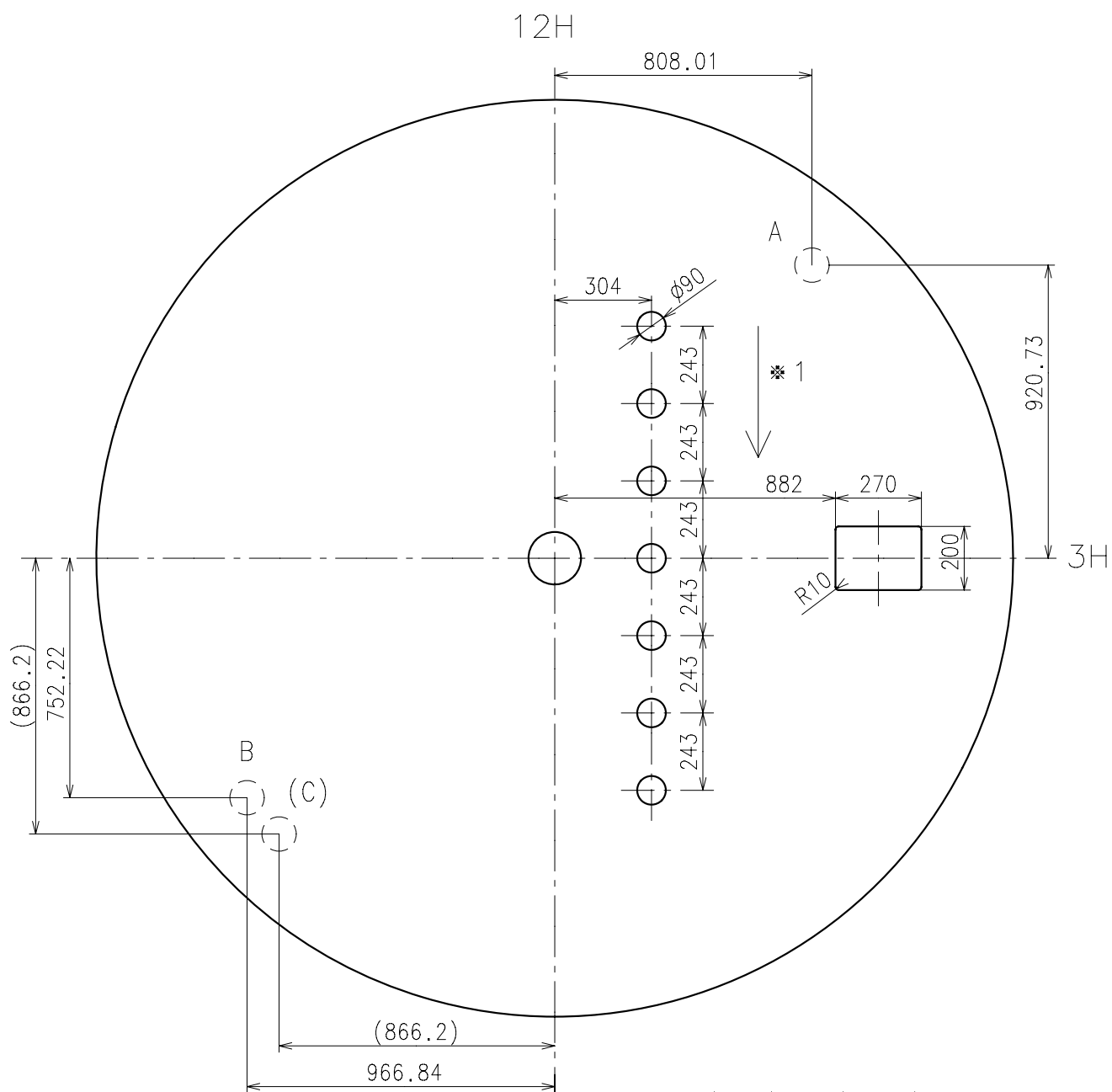
Hardness : Vickers 600±50



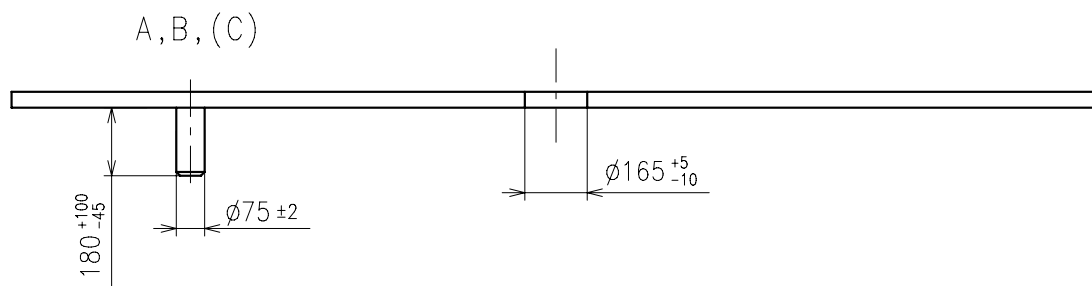
※ Use dial leg A-B or (A-C)



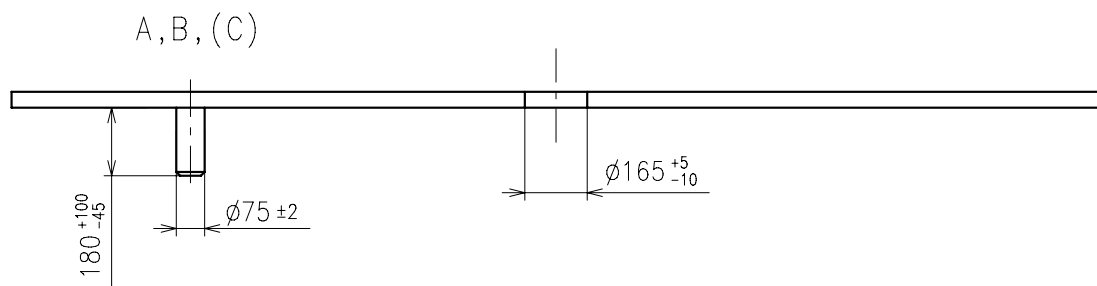
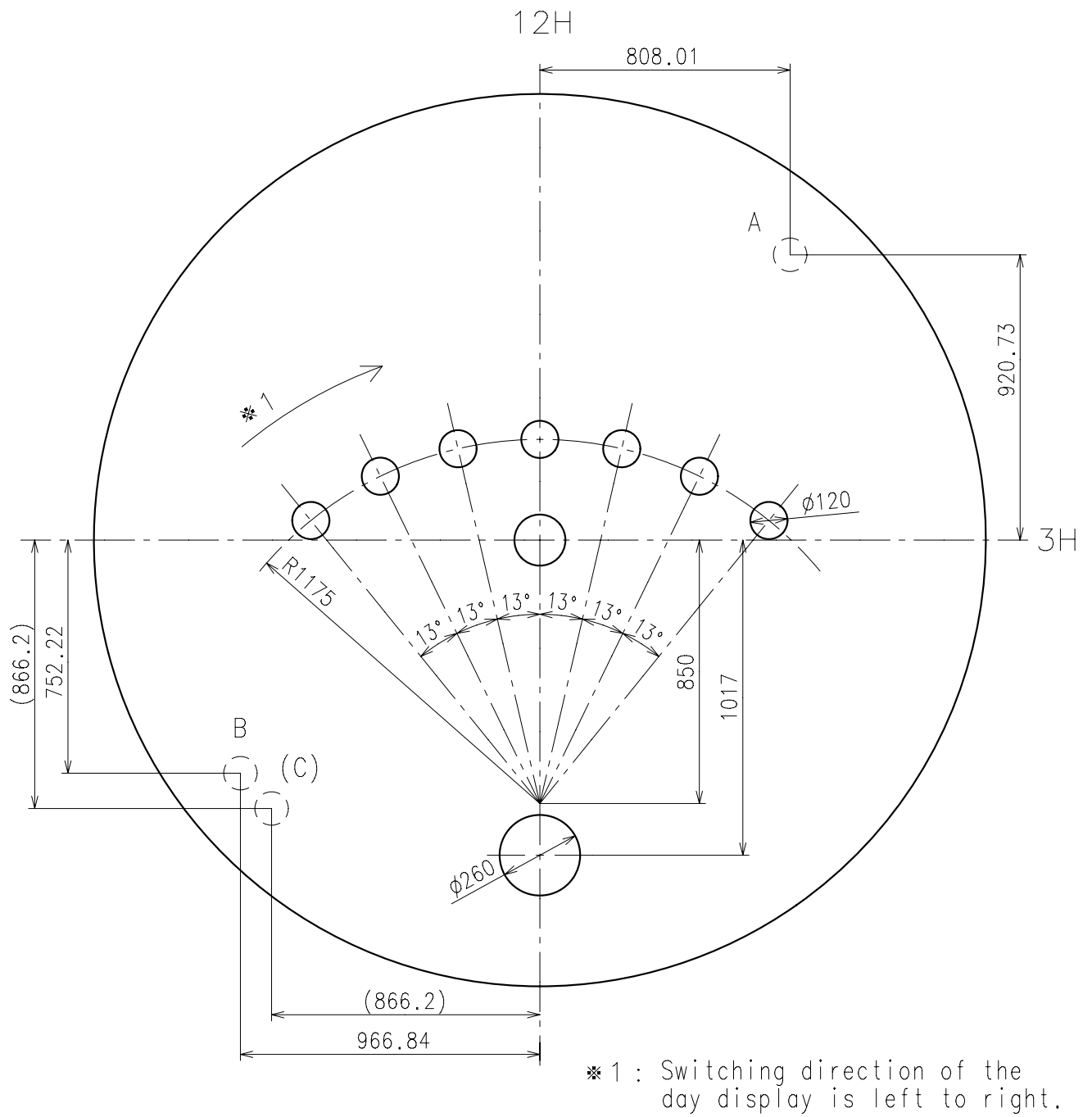
※ Use dial leg A-B or (A-C)



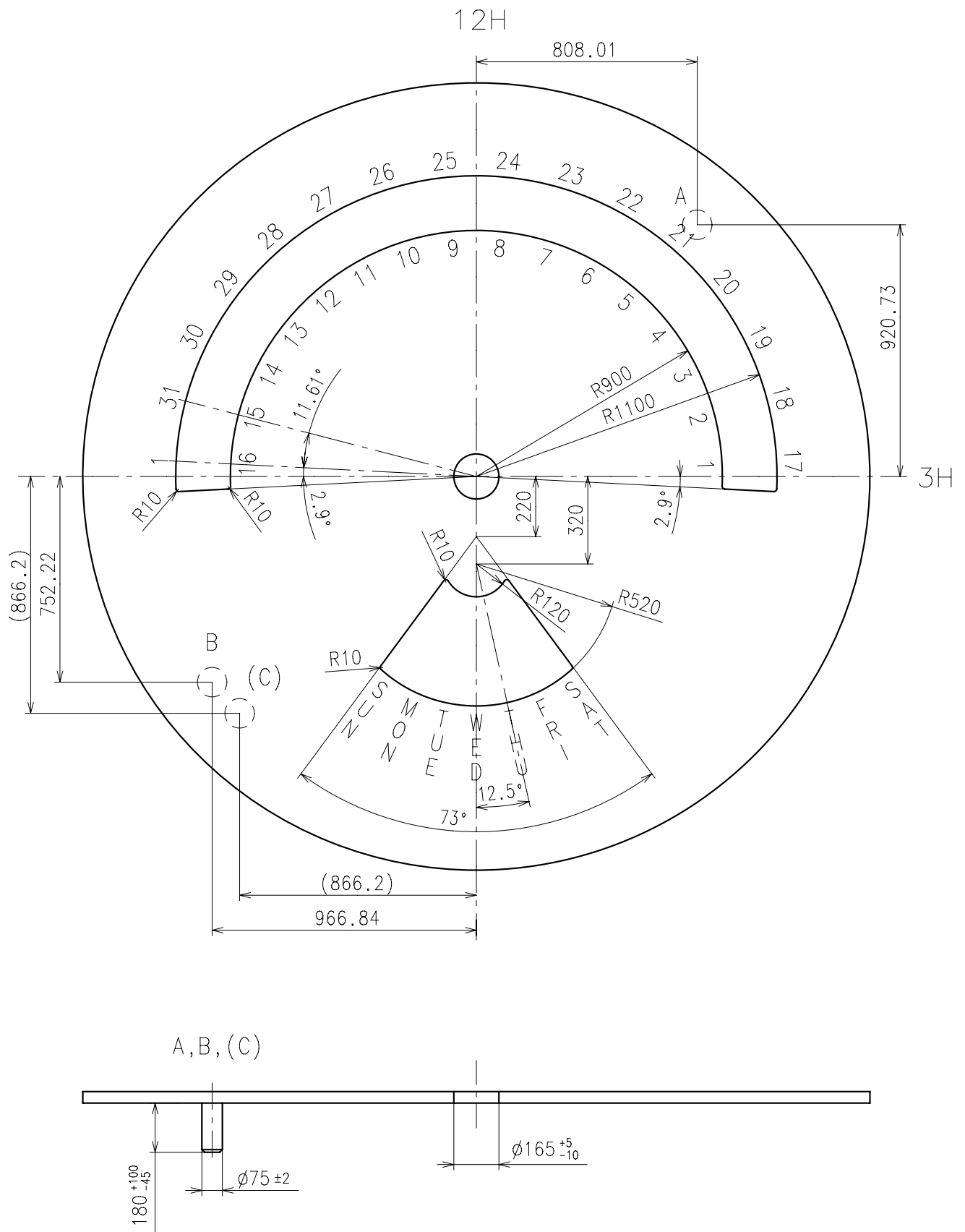
※ 1 : Switching direction of the day display is top to bottom.



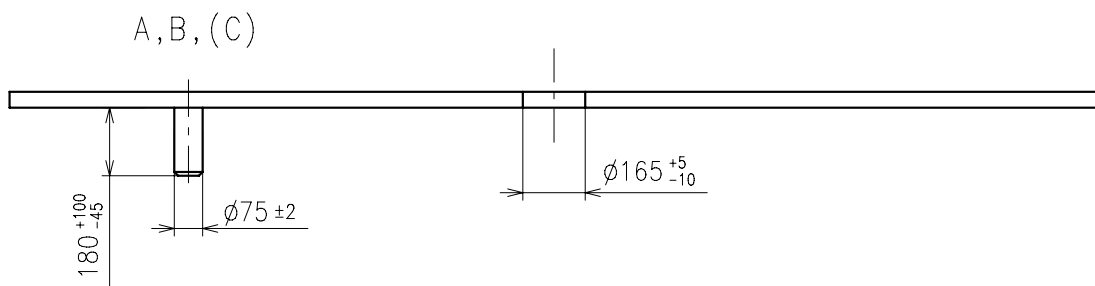
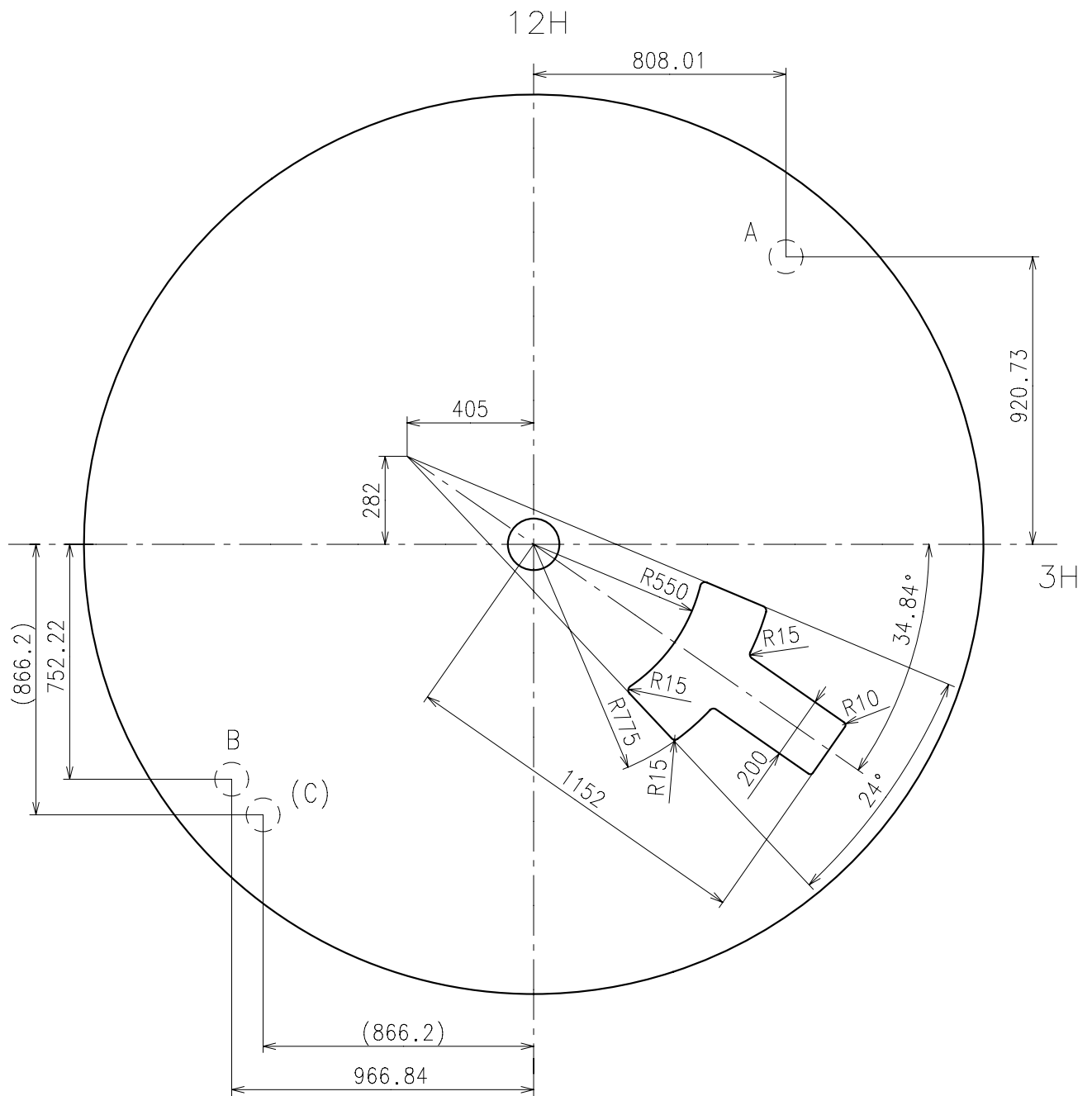
※ Use dial leg A-B or (A-C)



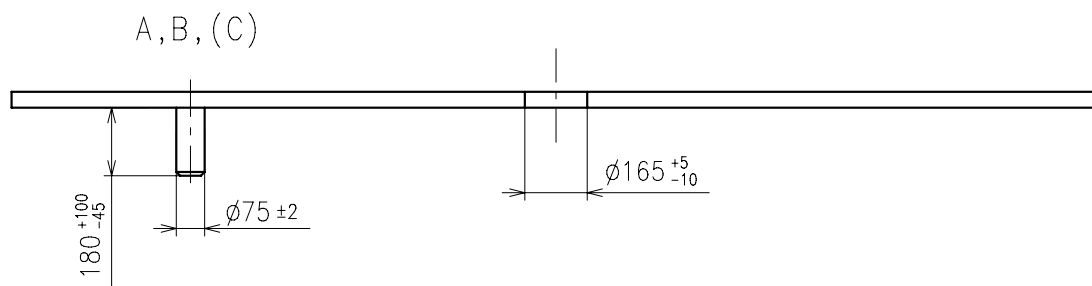
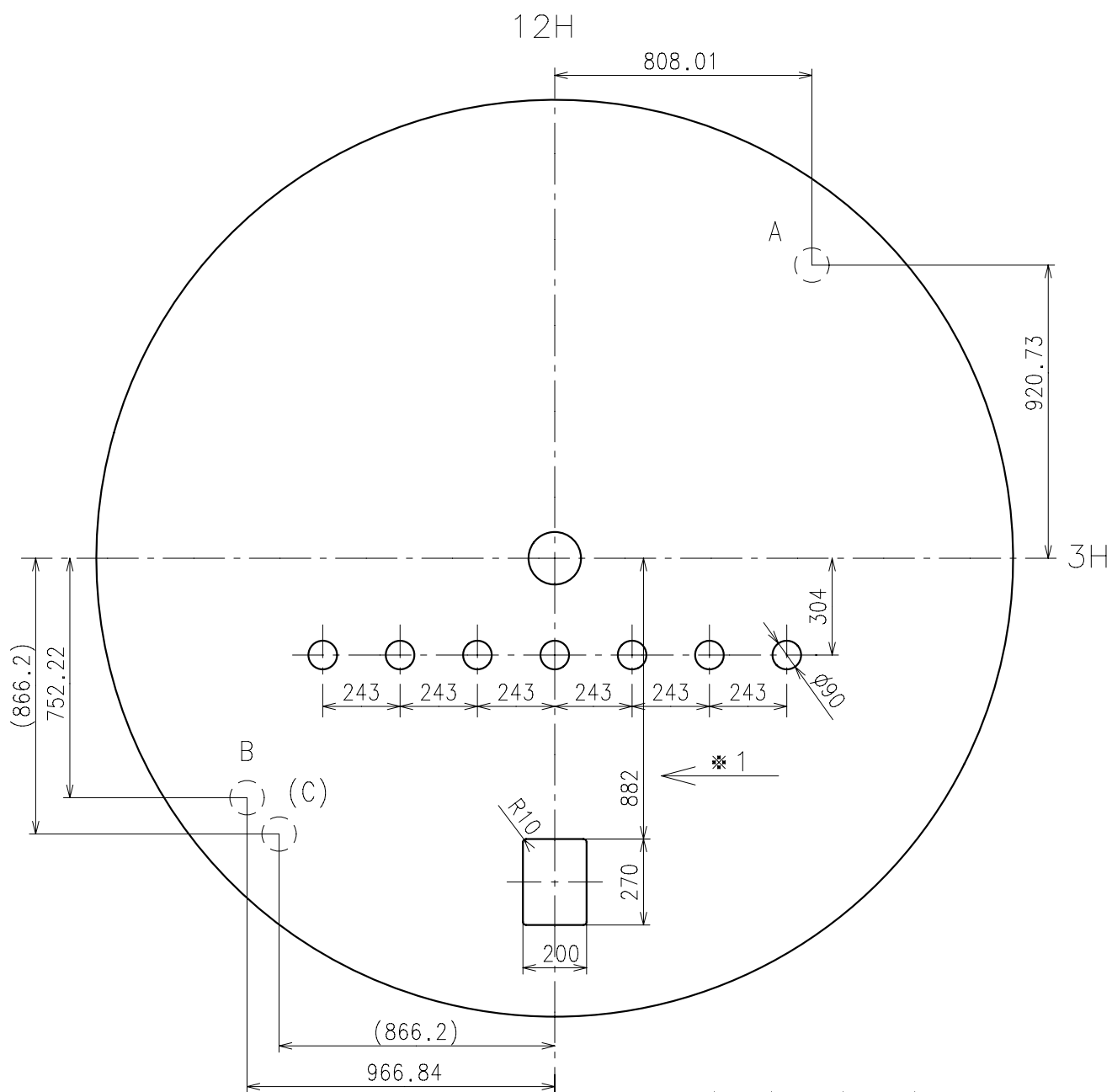
✱ Use dial leg A-B or (A-C)



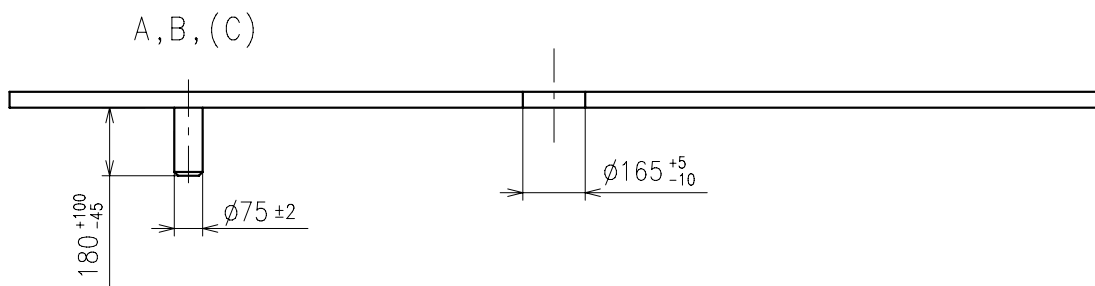
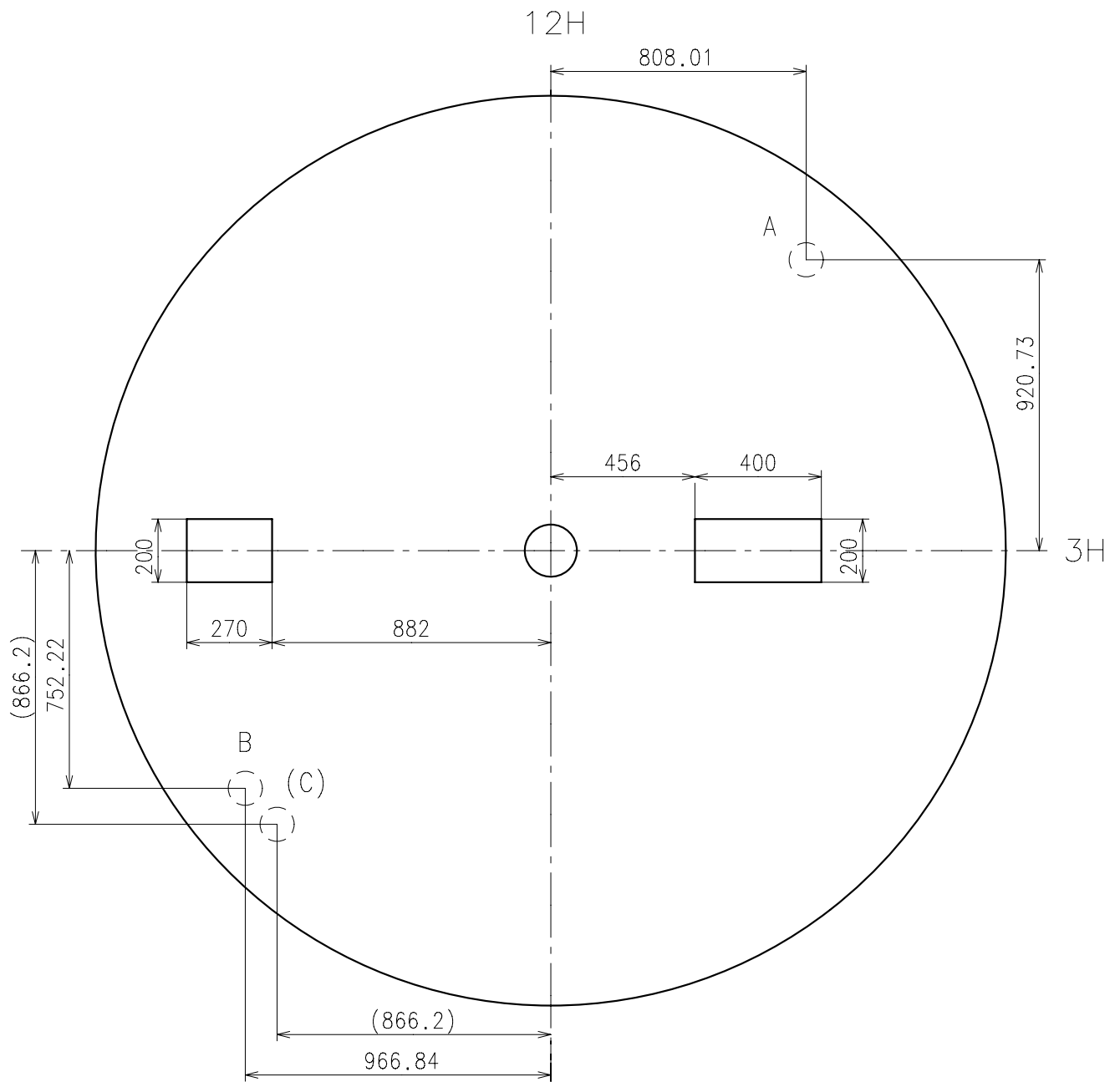
* Use dial leg A-B or (A-C)



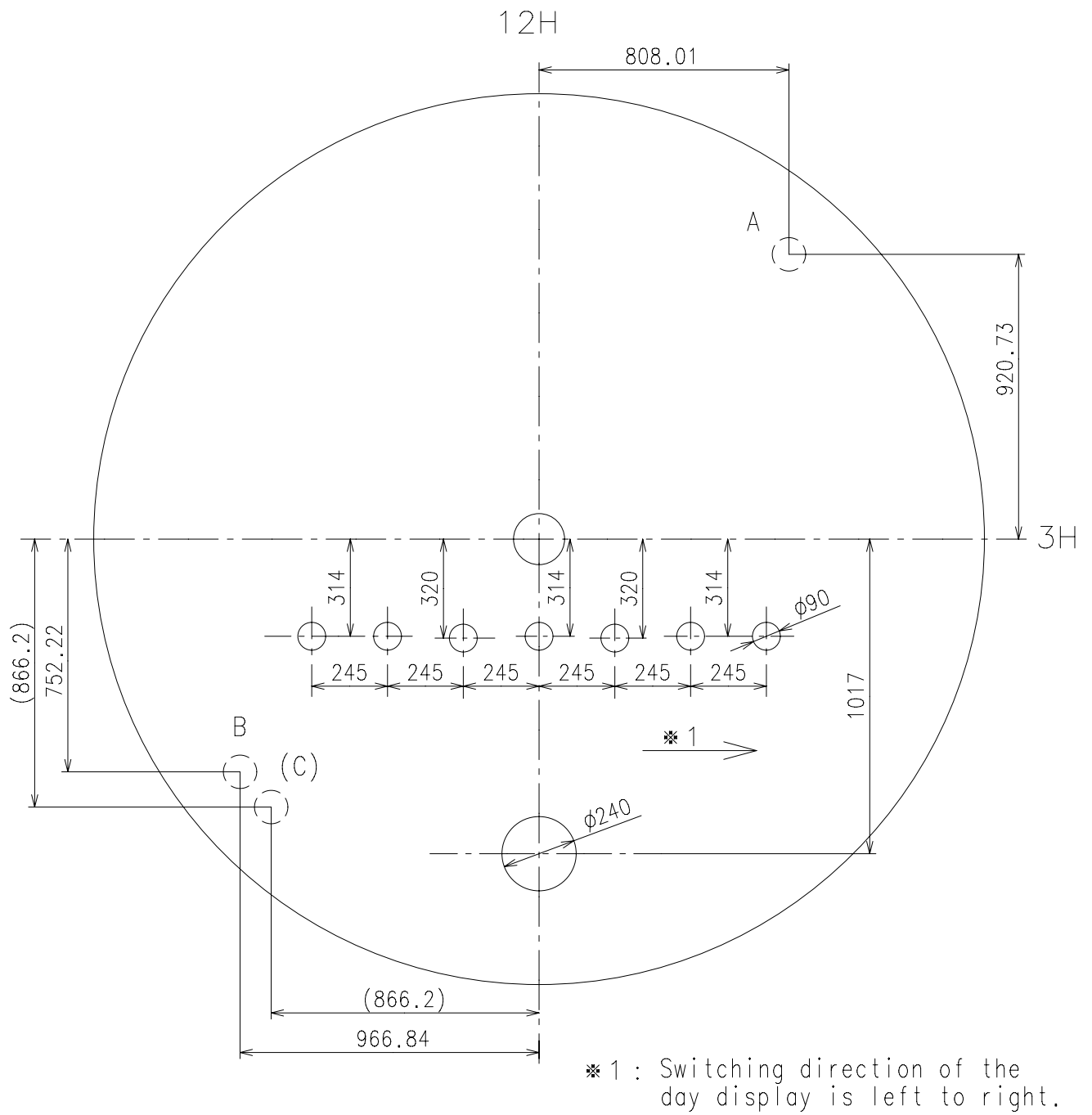
※ Use dial leg A-B or (A-C)

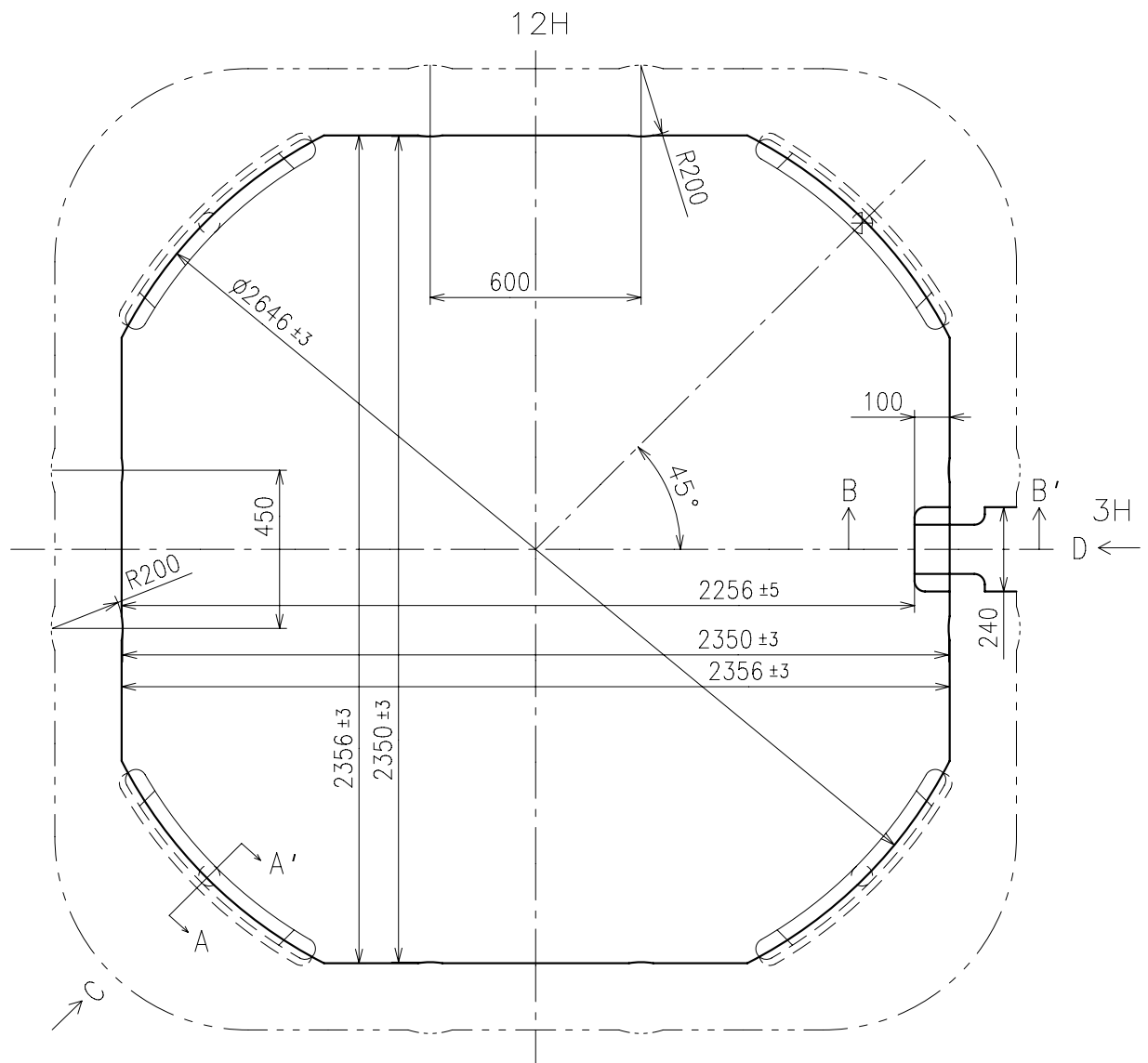


❖ Use dial leg A-B or (A-C)

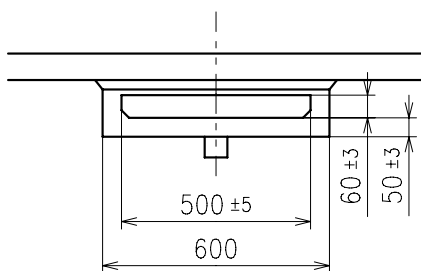


※ Use dial leg A-B or (A-C)

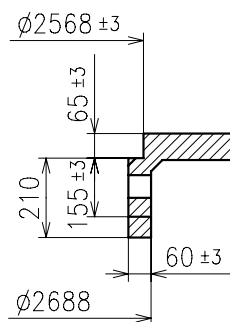




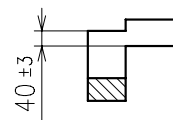
C view



A-A' section



B-B' section



D view

