

## Watch Movement Specification and Drawing

### CALENDAR

# Cal. VX83E

Movement Size

**6 3/4 × 8'''**

Casing Diameter

**15.3 × 17.4 mm**

Height

**3.11mm**

Battery Life

**3 years**



Date: 4/Aug./'23

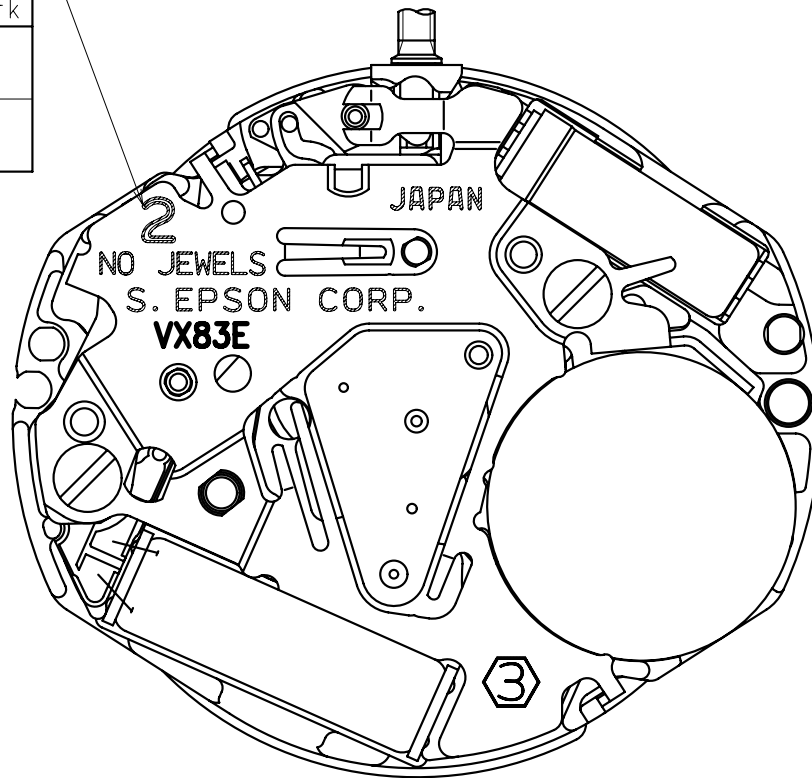
# Cal. VX83E

Items	Rev.	Page
Specifications	04	1
Appearance	02	2
Casing	03	3
Hand fitting	03	4
Hand setting stem	02	5
Dial-01	03	6-01
Dial-02	01	6-02
Dial-03	03	6-03
Dial-05	01	6-05
Dial-06	01	6-06
Casing ring	01	7

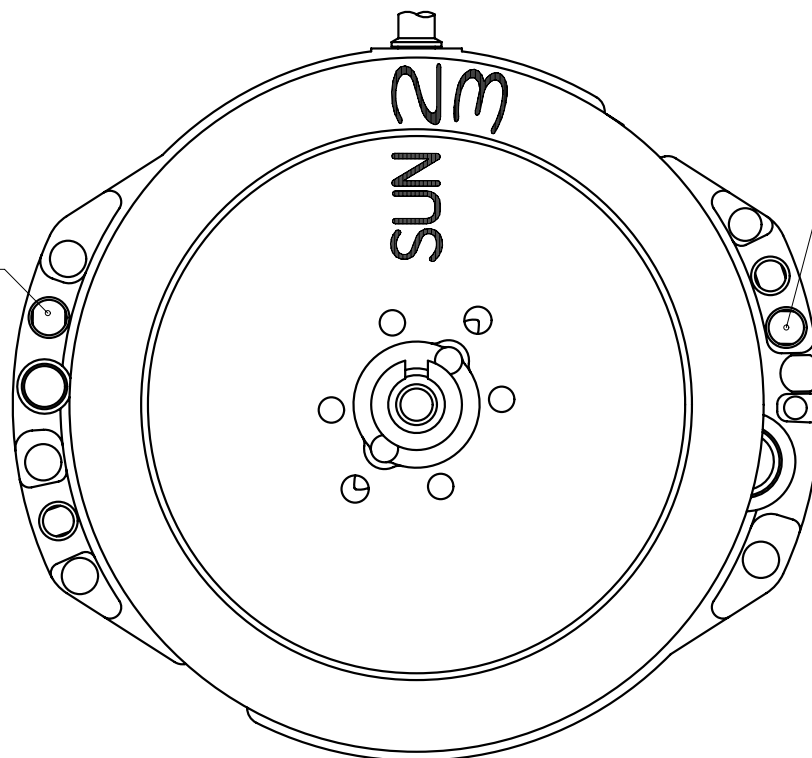


Hands type

	Mark
Type S (1) VX83E1**	1
Type M (2) VX83E2**	2



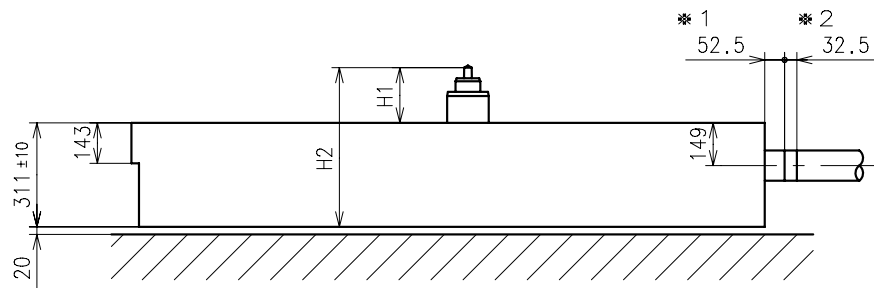
Dial leg hole B



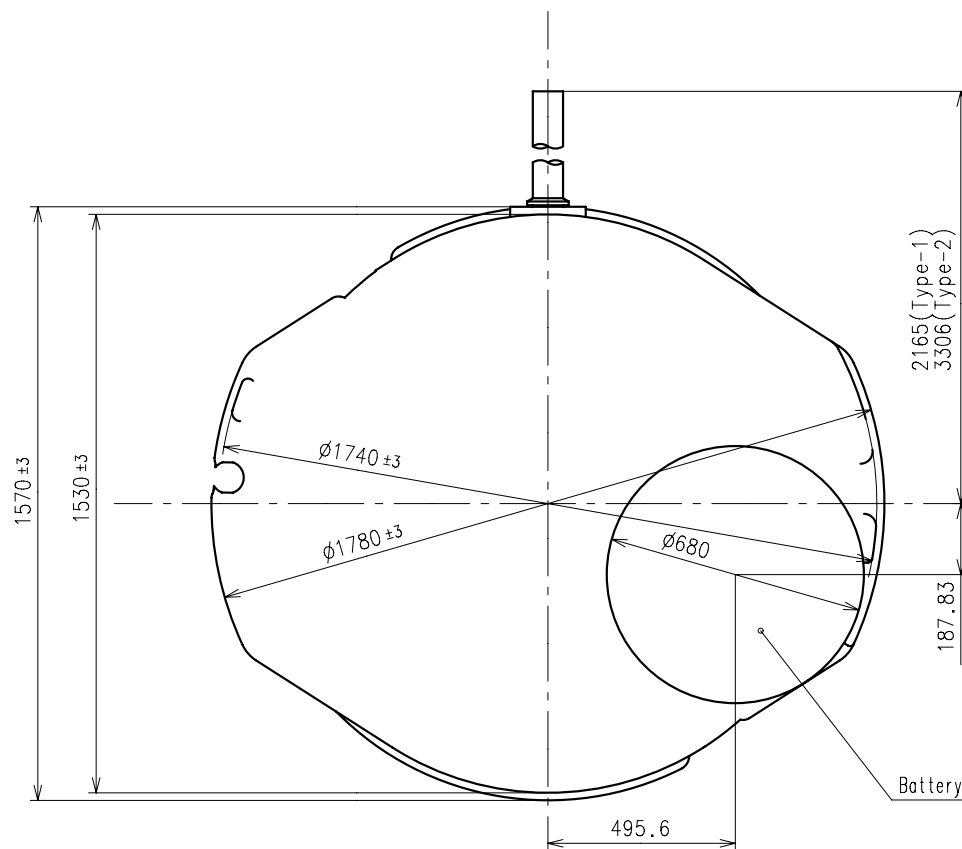
Dial leg hole A

\*1:First pullout stroke

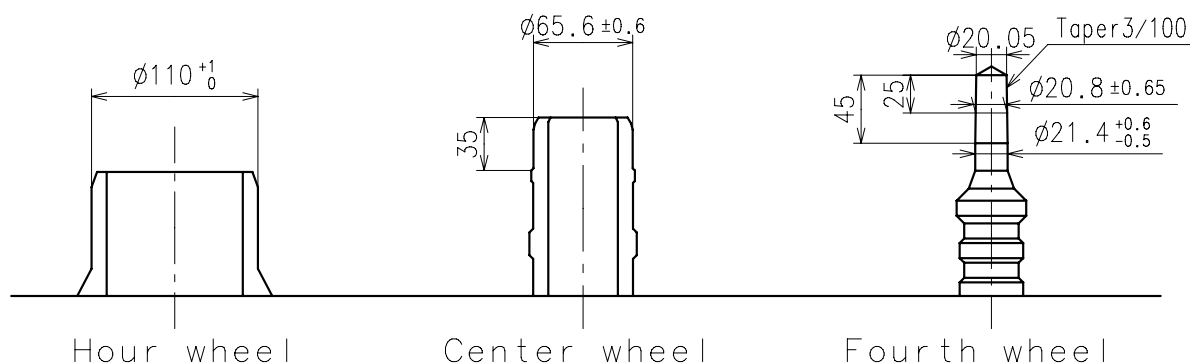
\*2:Second pullout stroke



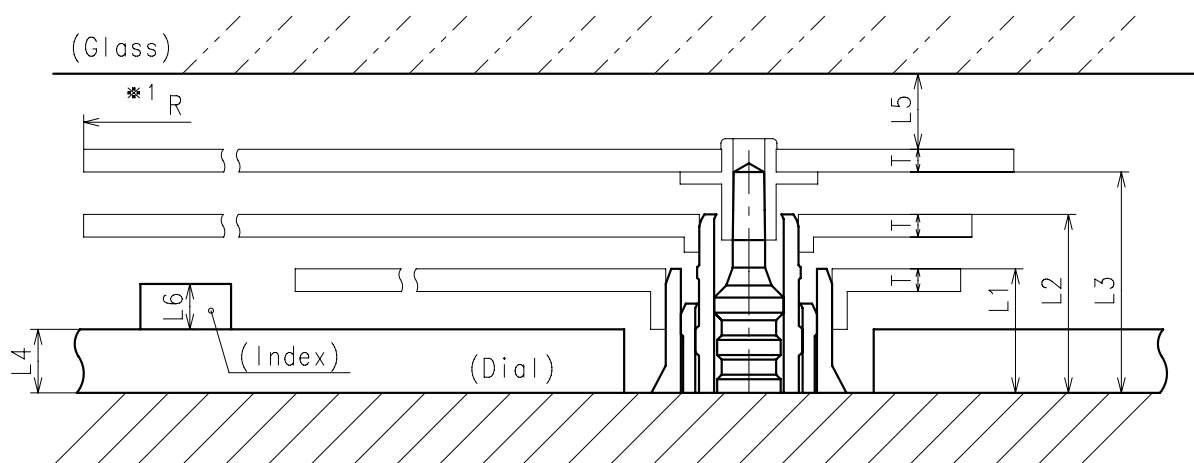
Center post		Type S (1) VX83E1**	Type M (2) VX83E2**
Maximum height from dial support	H1	146	182
Total height including movement	H2	457	493



- \* Hour hand unbalance  $\leq 0.5\mu\text{ N}\cdot\text{m}$  ( $50\mu\text{ g}\cdot\text{m}$ )
- \* Minute hand unbalance  $\leq 0.6\mu\text{ N}\cdot\text{m}$  ( $60\mu\text{ g}\cdot\text{m}$ )
- \* Second hand unbalance  $\leq 0.07\mu\text{ N}\cdot\text{m}$  ( $7\mu\text{ g}\cdot\text{m}$ )

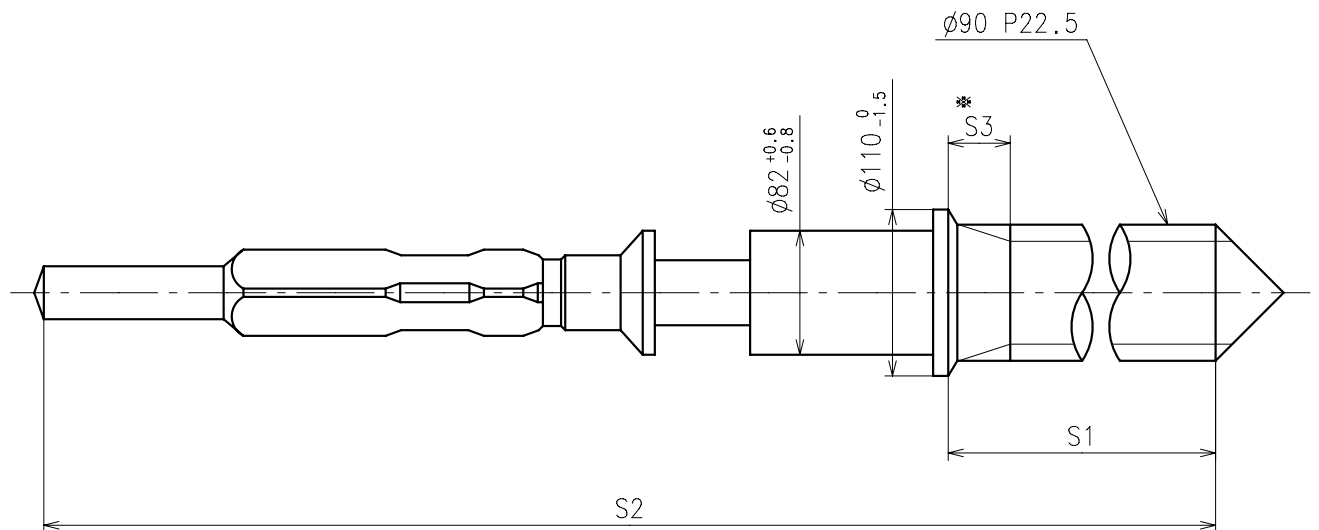


	Parts No.		
	Hour wheel	Center wheel	Fourth wheel
Type S (1) VX83E1**	0271904	0221904	0241904
Type M (2) VX83E2**	0271934	0221934	0241934



	L1	L2	L3	L4	L5	L6	T	*1 R
Type S (1) VX83E1**	82	118	146	40	MIN: 50	MAX: 35	15	MAX: 1250
Type M (2) VX83E2**	105	154	182	40	MIN: 50	MAX: 60	15	MAX: 1250

\*1: It is the size taken into consideration for hands attachment.  
Please observe some standard value specified in unbalance when using long hands.

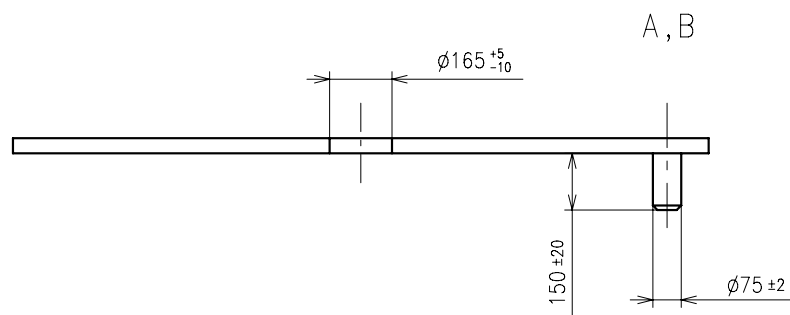
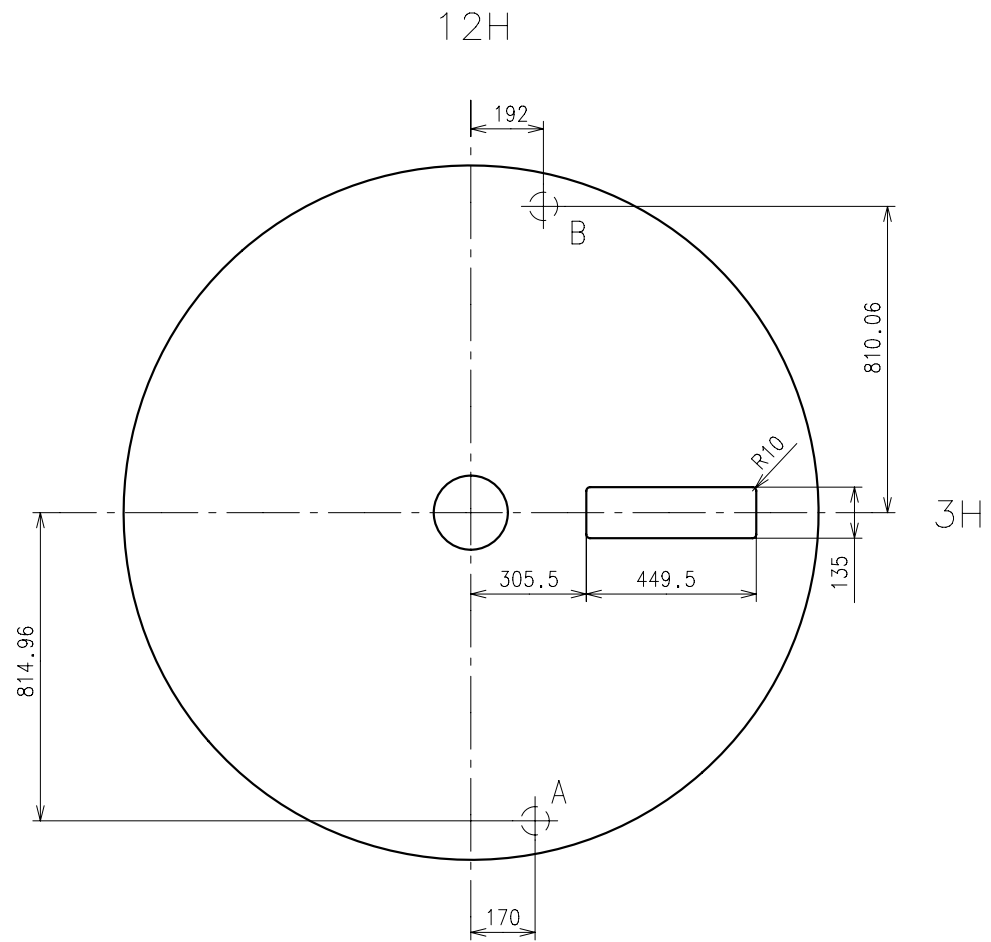


※ Not threaded

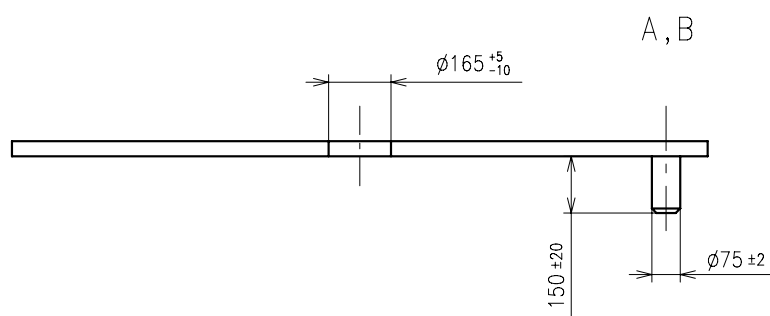
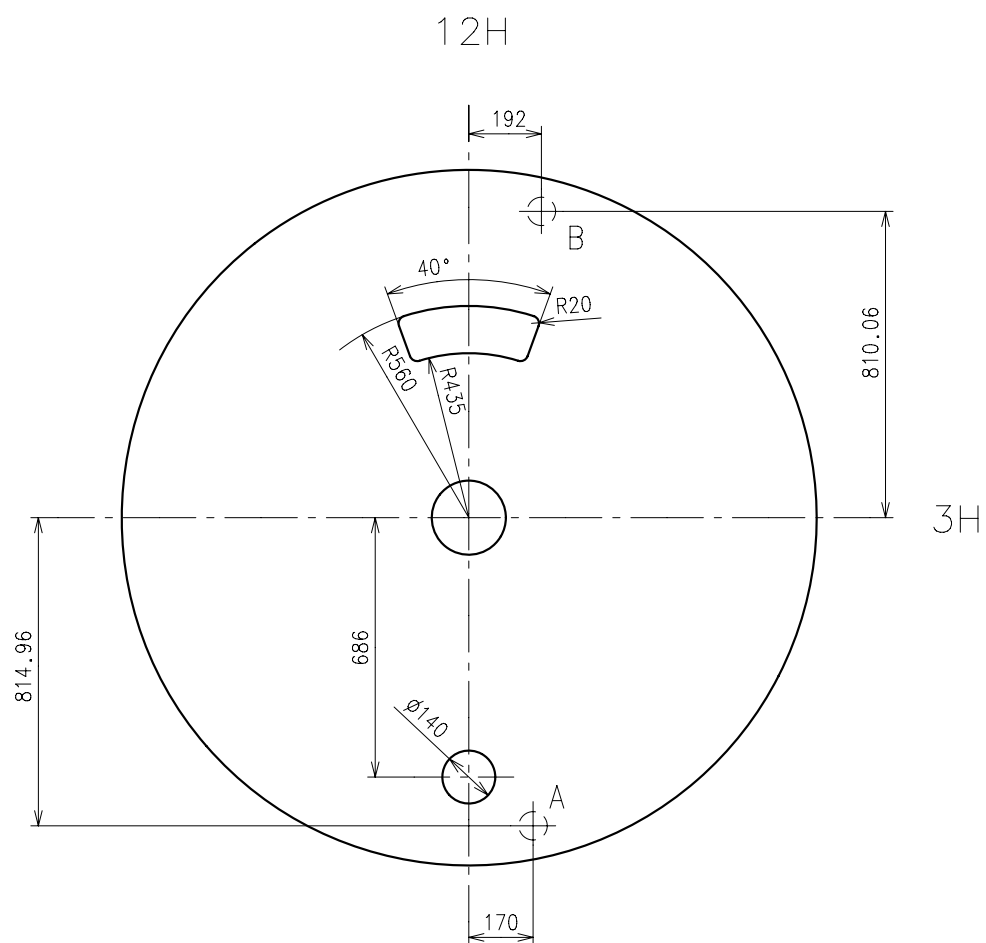
	Part No.	S1	S2	※ S3
Type-1 (Standard)	0351177	1366	1964	60
Type-2	0351578	2507	3105	650

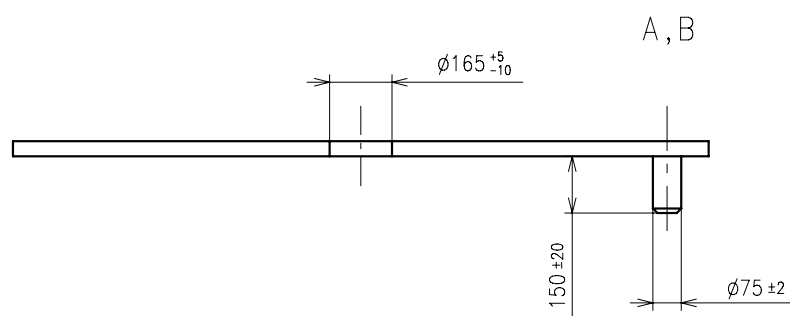
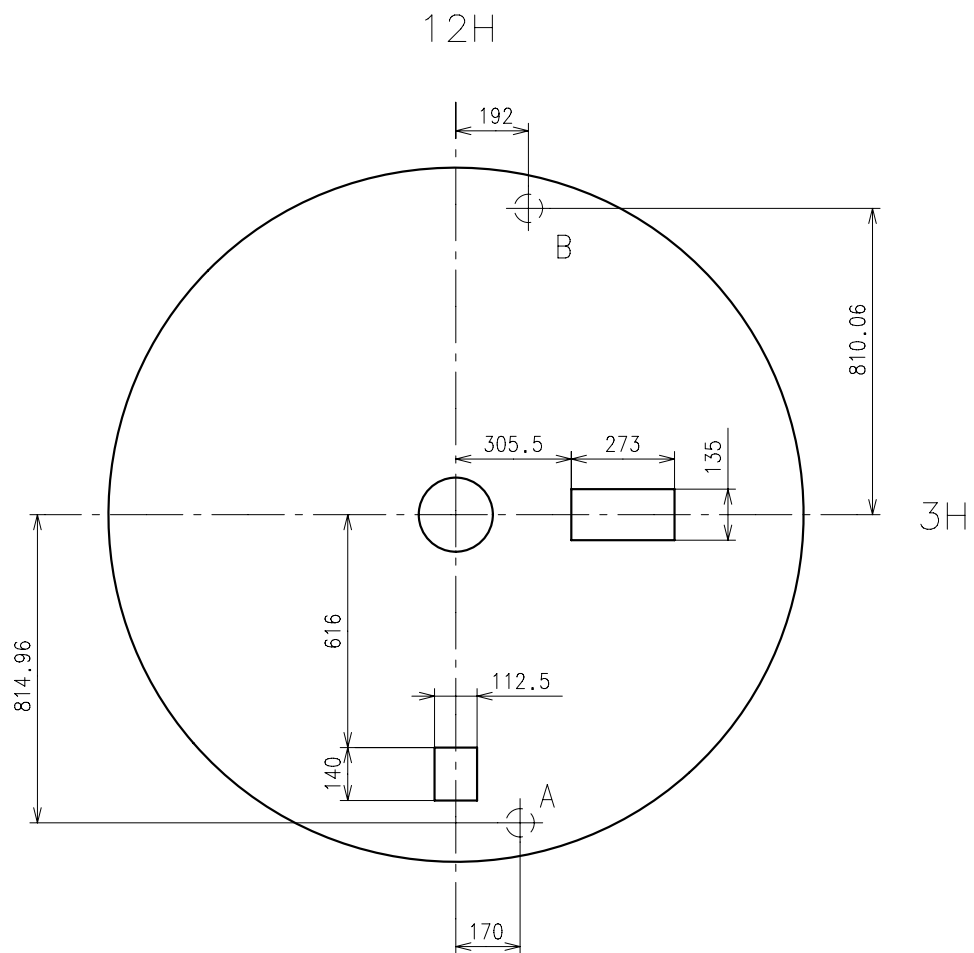
Material : Steel

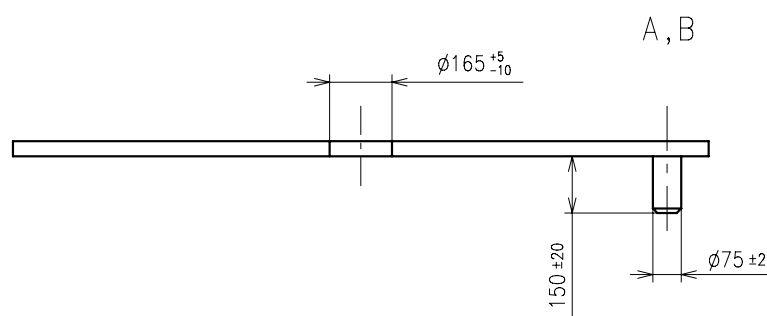
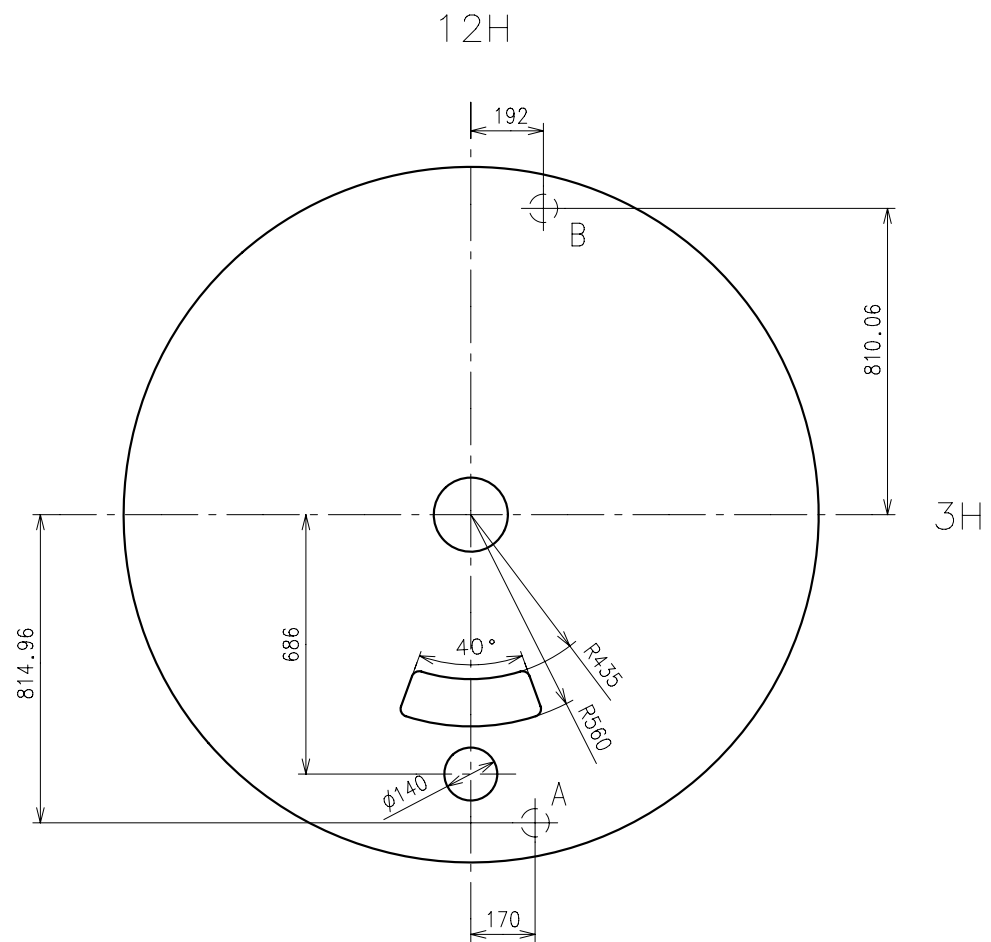
Hardness : Vickers 600±50

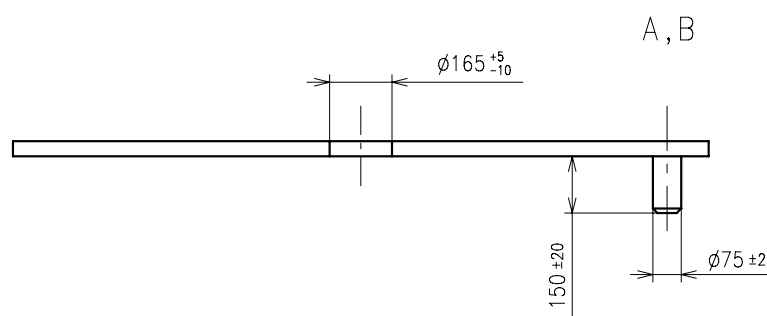
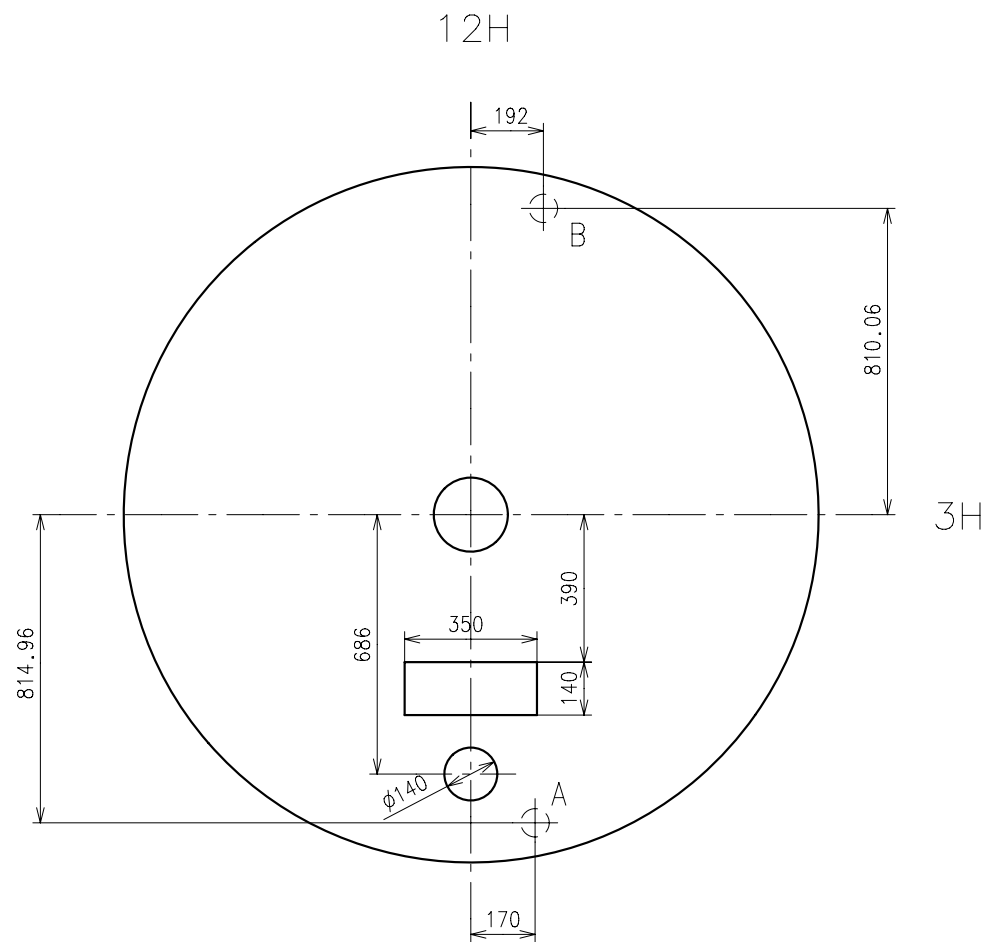


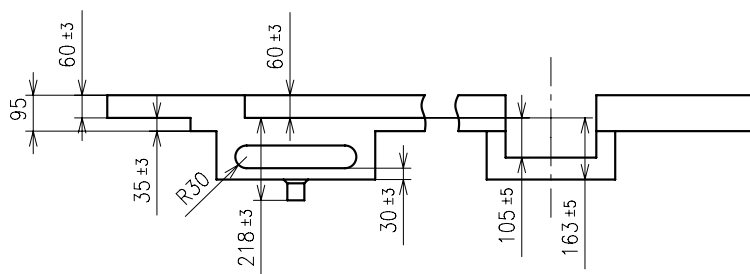












	X	Y
a	+639.35	+352.33
b	- 97.66	-209.34
c	+707.84	+337.08
d	-847.00	- 69.00
e	-474.61	-653.25