

Watch Movement Specification and Drawing

MINI & SLIM

Cal. VX01B

Movement Size

4 3/4'''

Casing Diameter

10.8 × 13.75mm

Height

2.39mm

Battery Life

2 years



Date: 18/Sep./'20

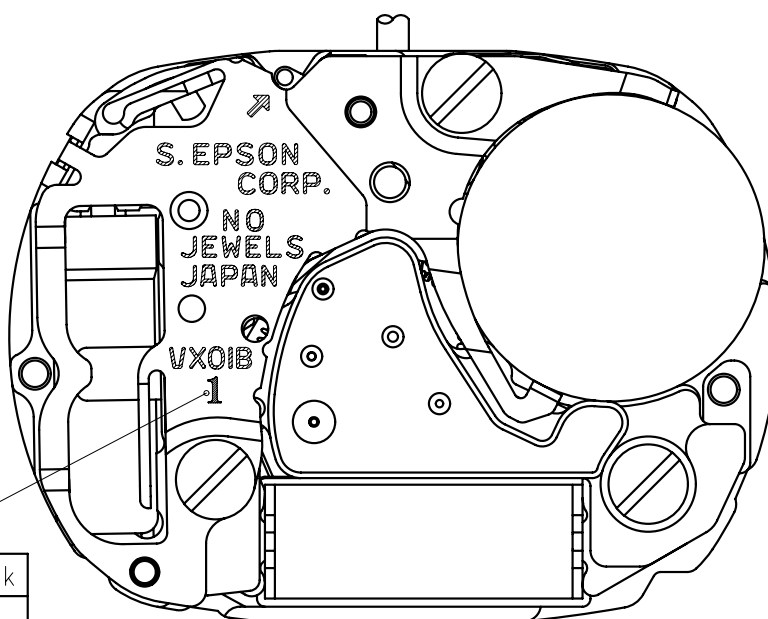
Cal. VX01B

Items	Rev.	Page
Specifications	07	1
Appearance	02	2
Casing	04	3
Hand fitting	02	4
Hand setting stem	03	5
Dial	02	6
Casing ring	01	7

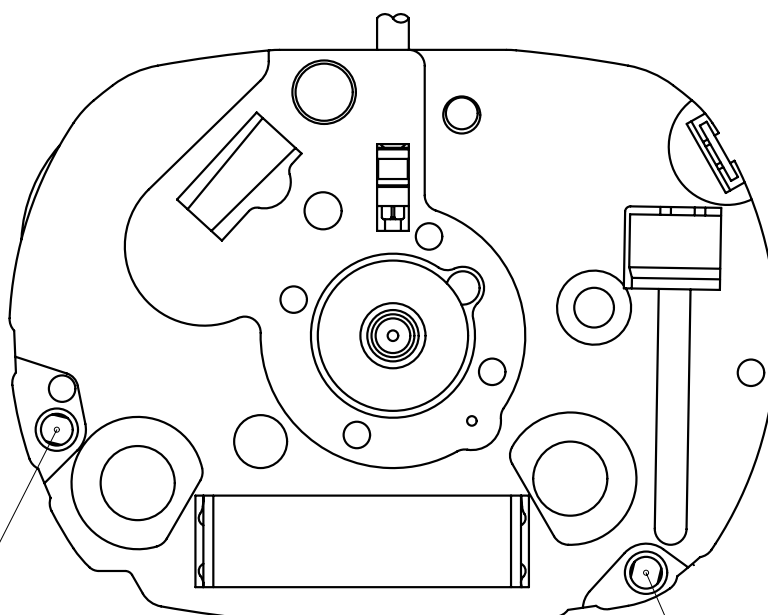
Cal.	VX01B	Specifications		Date : 18/Sep./'20
				Rev. : 07
Analog Quartz 4 3/4" Slim Movement / Three Hands(H/M/S)				
1. MOVEMENT DIMENSIONS				
Outside diameter		10.80mm(3-9H) × 14.50mm(12-6H)		
Casing diameter		10.80mm(3-9H) × 13.75mm(12-6H)		
Total height		2.39mm(2.48mm including battery)		
2. TIME STANDARD				
Type of quartz oscillator		Tuning fork		
Frequency of quartz oscillator		32,768 Hz		
Accuracy		±20 seconds per month (on wrist)		
Operating temperature range		−5°C to +50°C		
Regulation device		Nil (Pre-adjusted)		
3. INDICATOR / FUNCTIONS				
3 Hands		Hour / Minute / Second		
Power depletion warning function(BLD)				
(Second hand moves at 2-second intervals)				
Reset switch				
Setting mechanism		Crown at normal position	: Free	
		Crown pulled out 1st click	: Time setting / Reset	
4. FEATURES				
Jewels		0 Jewels		
Anti-magnetism		Over 1600A/m (Direct current magnetic field)		
Maximum unbalance of hands		Hour hand	: 0.13 μ N·m	
		Minute hand	: 0.15 μ N·m	
		Second hand	: 0.05 μ N·m	
5. BATTERY				
Type / Size		Silver oxide battery / φ 5.8mm × t 2.15mm		
Recommended battery		SR521SW (Maxell, Murata, Seizaiken)		
Nominal voltage		1.55 V		
Battery life		Approx. 2 years		
Driving current consumption		Approx. 0.8 μ A		
Operation stopping voltage		1.0 V		
6. SEPARATED PARTS (Parts code)				
Hour wheel		0271803(Type S) or 0271808(Type L)		
Dial washer		0491735		
Hand setting stem		0351807 or 0351808 or 0351819 or 0351818		
Battery		SR521SW		
7. TEST OF ACCURACY				
Equipment to be used		SEIKO quartz tester QT-99, Greiner quartz timer-C , Witschi Q-tester 4000		
Duration of measurement		10 seconds		
Microphone to be used		Electromagnetic detection type		
All specifications are subject to change without notice.				

Hands type

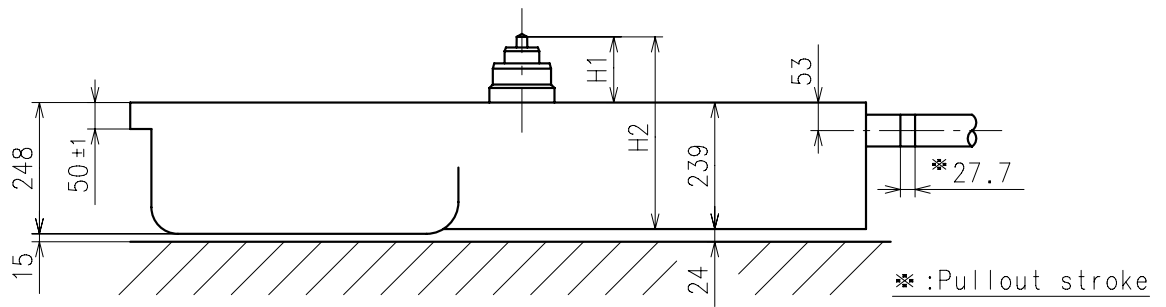
	Mark
Type S (1)	1
Type L (3)	3



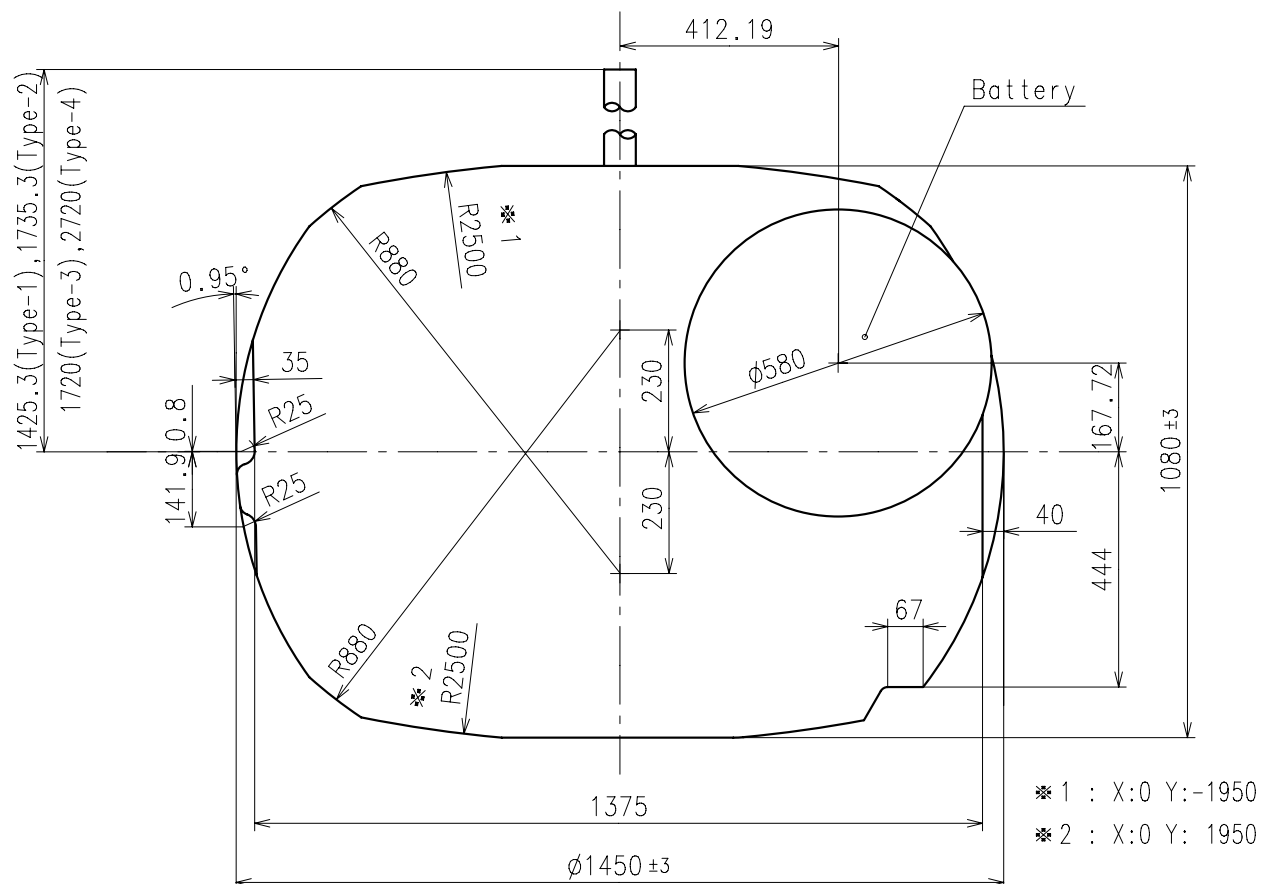
Dial leg hole B



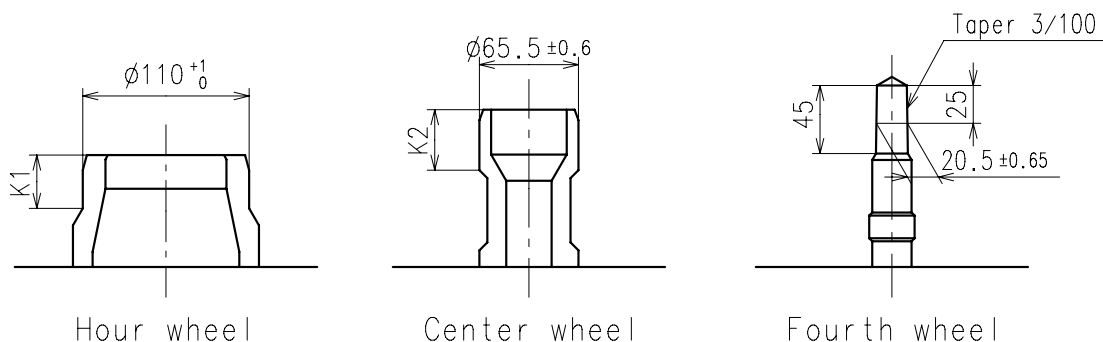
Dial leg hole A



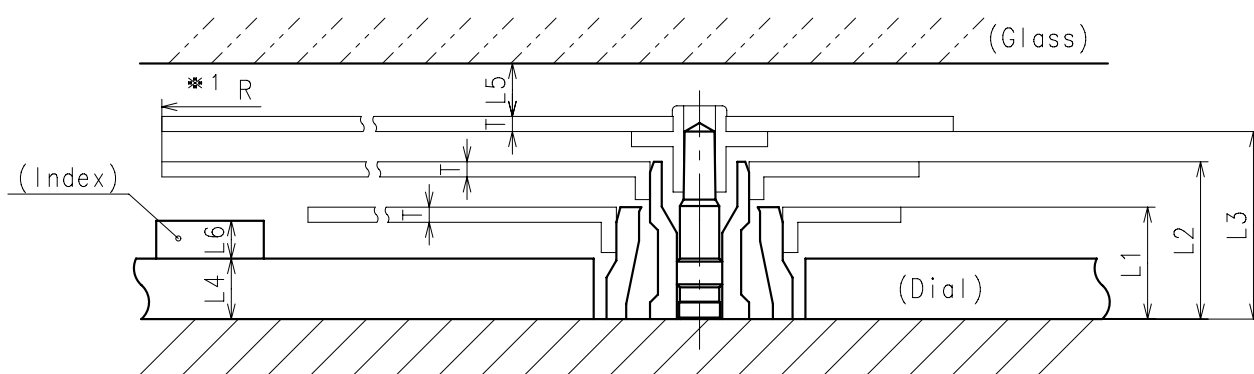
Center post		Type S (1) VX01B1	Type L (3) VX01B2
Maximum height from dial support	H1	124	170
Total height including movement	H2	363	409



- ※ Hour hand unbalance $\leq 0.13\mu \text{ N} \cdot \text{m}$ ($13\mu \text{ g} \cdot \text{m}$)
- ※ Minute hand unbalance $\leq 0.15\mu \text{ N} \cdot \text{m}$ ($15\mu \text{ g} \cdot \text{m}$)
- ※ Second hand unbalance $\leq 0.05\mu \text{ N} \cdot \text{m}$ ($5\mu \text{ g} \cdot \text{m}$)

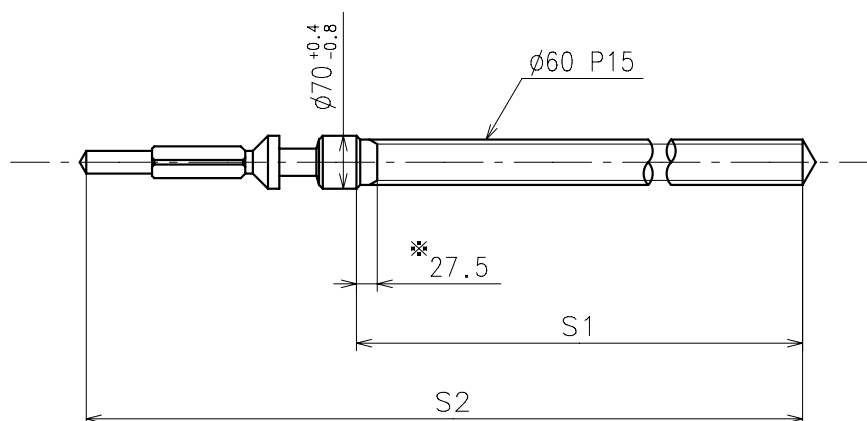


	Parts No.			Dimension	
	Hour wheel	Center wheel	Fourth wheel	K1	K2
Type S (1) VX01B1	0271803	0221809	0241509	40	40
Type L (3) VX01B2	0271808	0221808	0241515	104	40



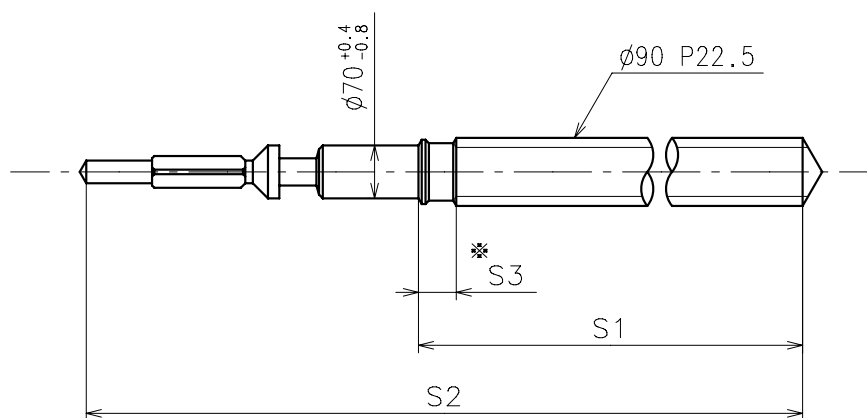
	L1	L2	L3	L4	L5	L6	T	*1 R
Type S (1) VX01B1	74	104	124	40	MIN: 40	MAX: 22	10	MAX: 750
Type L (3) VX01B2	120	150	170	90	MIN: 40	MAX: 22	10	MAX: 750

※ 1: It is the size taken into consideration for hands attachment.
Please observe some standard value specified in unbalance when using long hands.



※ Not threaded

	Part No.	S1	S2
Type-1 (Standard)	0351807	935	1292.3
Type-2	0351808	1245	1602.3



※ Not threaded

	Part No.	S1	S2	S3
Type-3	0351819	1148	1577	50
Type-4	0351818	2148	2577	1050

Material : Steel

Hardness : Vickers 600 ± 50

