

## Watch Movement Specification and Drawing

MINI & SLIM

# Cal. VX11B

Movement Size

5 1/2'''

Casing Diameter

11.8 × 15.15mm

Height

2.49mm

Battery Life

2 years

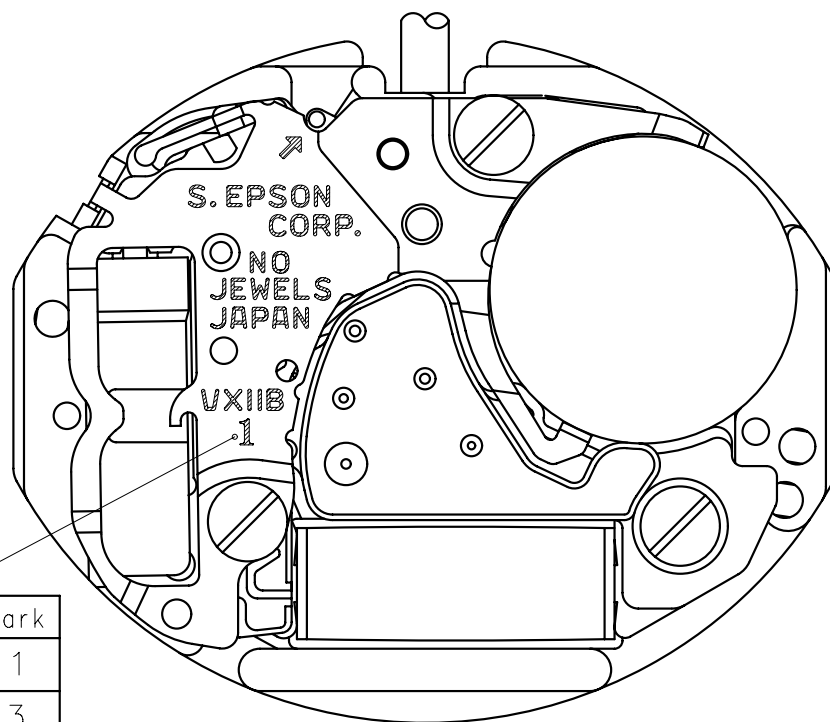


Date: 18/Sep./'20

# Cal. VX11B

Items	Rev.	Page
Specifications	05	1
Appearance	02	2
Casing	04	3
Hand fitting	03	4
Hand setting stem	04	5
Dial	01	6
Casing ring	01	7

Cal.	VX11B	Specifications	Date : 18/Sep./'20
			Rev. : 05
Analog Quartz 5 1/2" Slim Movement / Three Hands(H/M/S)			
1. MOVEMENT DIMENSIONS			
Outside diameter	13.00mm(3-9H) × 15.55mm(12-6H)		
Casing diameter	11.80mm(3-9H) × 15.15mm(12-6H)		
Total height	2.49mm (including battery)		
2. TIME STANDARD			
Type of quartz oscillator	Tuning fork		
Frequency of quartz oscillator	32,768 Hz		
Accuracy	±20 seconds per month (on wrist)		
Operating temperature range	−5°C to +50°C		
Regulation device	Nil (Pre-adjusted)		
3. INDICATOR / FUNCTIONS			
3 Hands	Hour / Minute / Second		
Power depletion warning function(BLD)	(Second hand moves at 2-second intervals)		
Reset switch			
Setting mechanism	Crown at normal position	: Free	
	Crown pulled out 1st click	: Time setting / Reset	
4. FEATURES			
Jewels	0 Jewels		
Anti-magnetism	Over 1600A/m (Direct current magnetic field)		
Maximum unbalance of hands	Hour hand	: 0.13 μ N·m	
	Minute hand	: 0.15 μ N·m	
	Second hand	: 0.05 μ N·m	
5. BATTERY			
Type / Size	Silver oxide battery / φ 5.8mm × t 2.15mm		
Recommended battery	SR521SW (Maxell, Murata, Seizaiken)		
Nominal voltage	1.55 V		
Battery life	Approx. 2 years		
Driving current consumption	Approx. 0.8 μ A		
Operation stopping voltage	1.0 V		
6. SEPARATED PARTS (Parts code)			
Hour wheel	0271819(TypeS) or 0271635(TypeL)		
Dial washer	0491735		
Hand setting stem	0351819 or 0351818		
Battery	SR521SW		
7. TEST OF ACCURACY			
Equipment to be used	SEIKO quartz tester QT-99, Greiner quartz timer-C , Witschi Q-tester 4000		
Duration of measurement	10 seconds		
Microphone to be used	Electromagnetic detection type		
All specifications are subject to change without notice.			



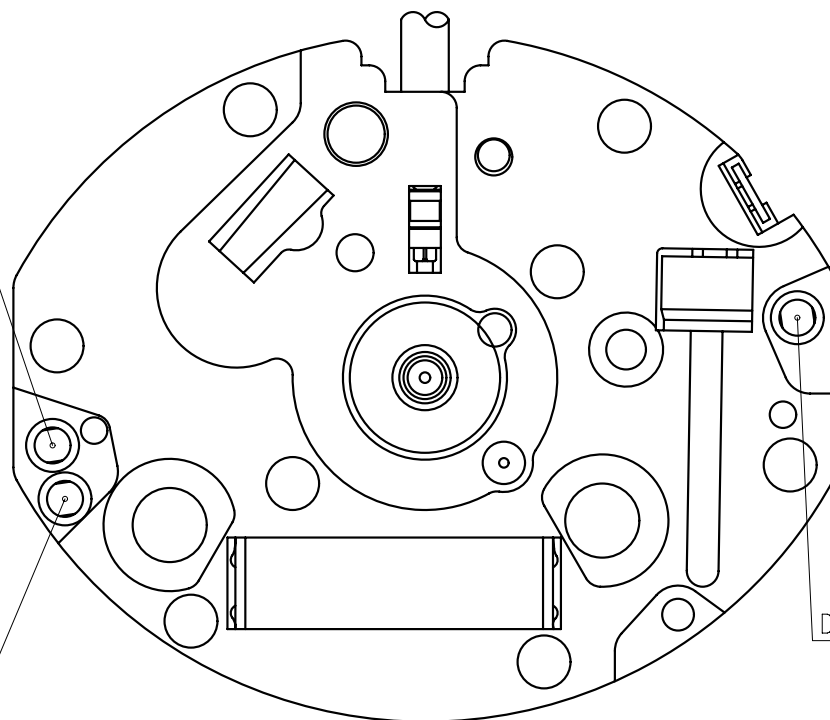
Hands type

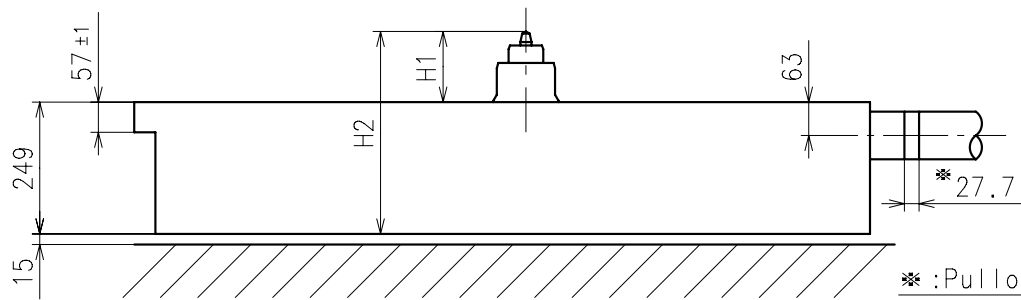
	Mark
Type S (1)	1
Type L (3)	3

Dial leg hole B  
(Main hole)

(Dial leg hole C)  
(Sub hole)

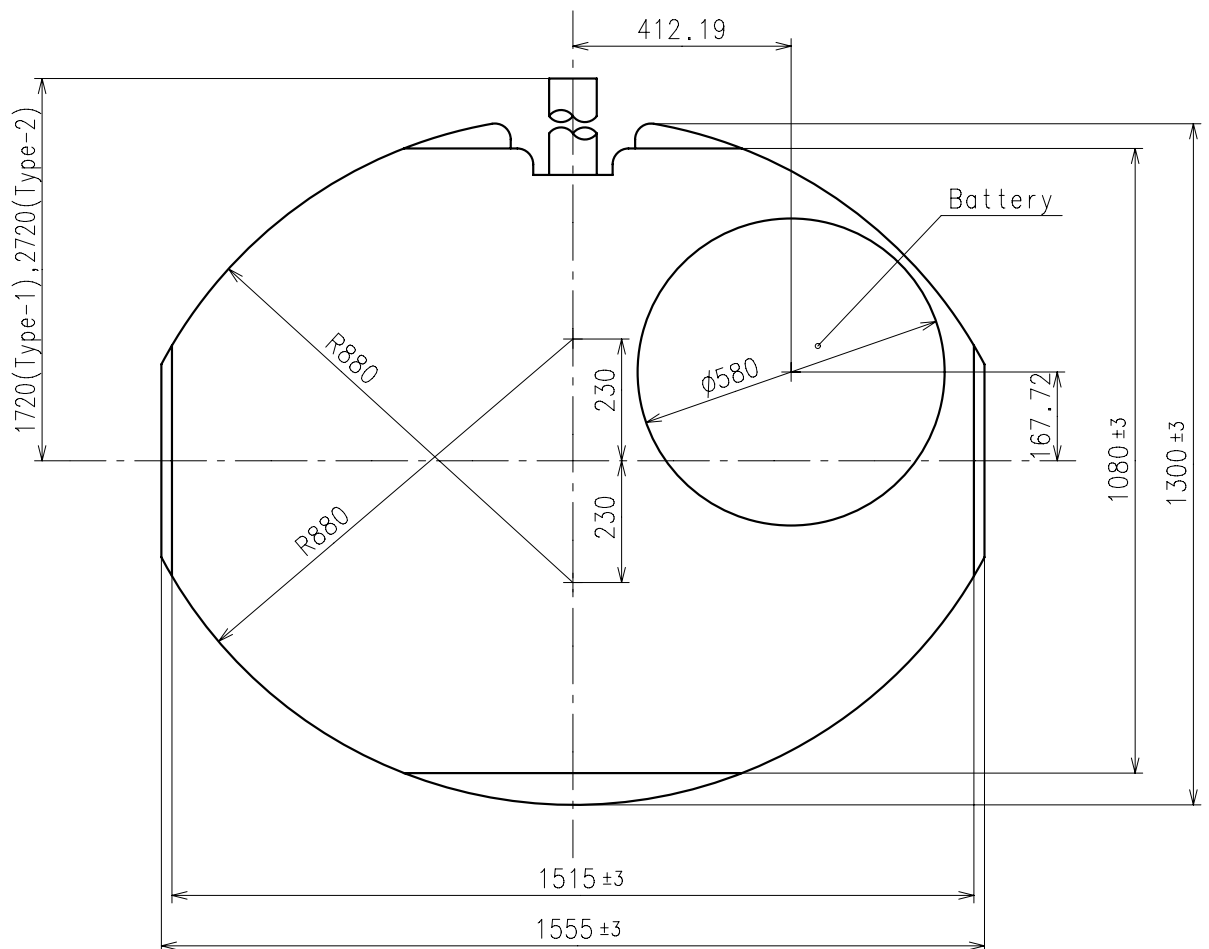
Dial leg hole A  
(Main hole)



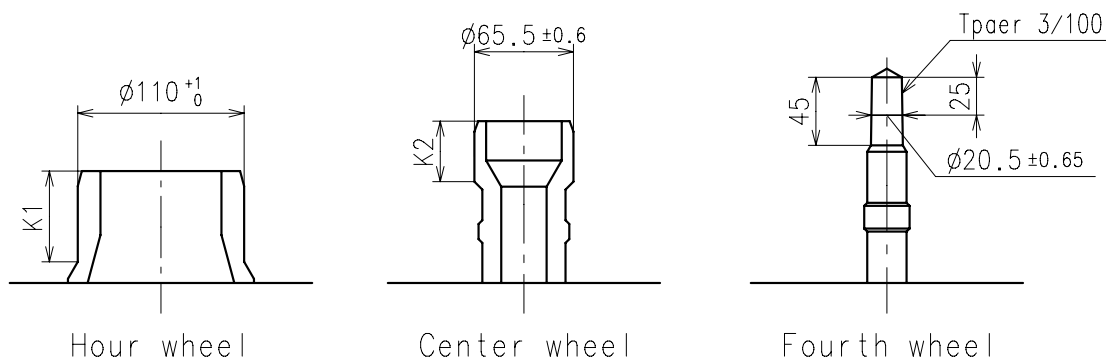


\*:Pullout stroke

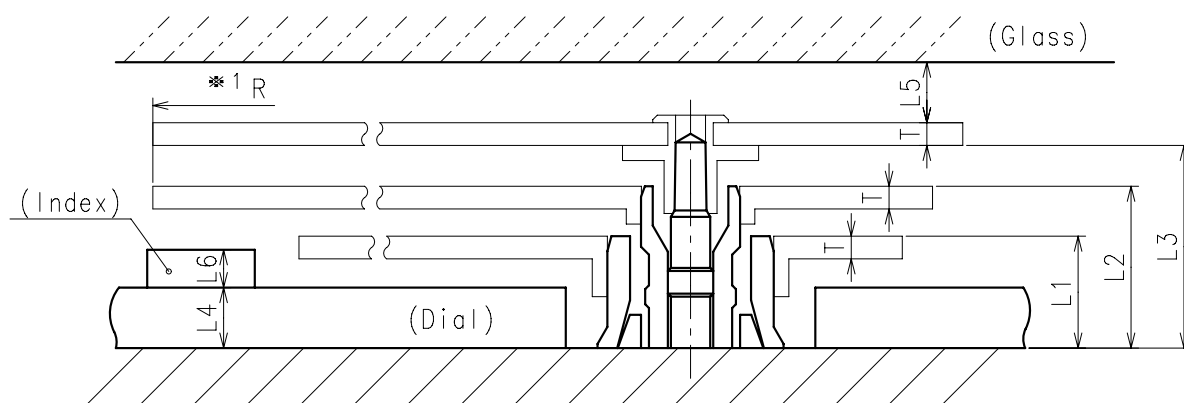
Center post		Type S (1) VX11B1	Type L (3) VX11B2
Maximum height from dial support	H1	140	188
Total height including movement	H2	389	437



- ※ Hour hand unbalance  $\leq 0.13\mu \text{ N} \cdot \text{m}$  ( $13\mu \text{ g} \cdot \text{m}$ )
- ※ Minute hand unbalance  $\leq 0.15\mu \text{ N} \cdot \text{m}$  ( $15\mu \text{ g} \cdot \text{m}$ )
- ※ Second hand unbalance  $\leq 0.05\mu \text{ N} \cdot \text{m}$  ( $5\mu \text{ g} \cdot \text{m}$ )

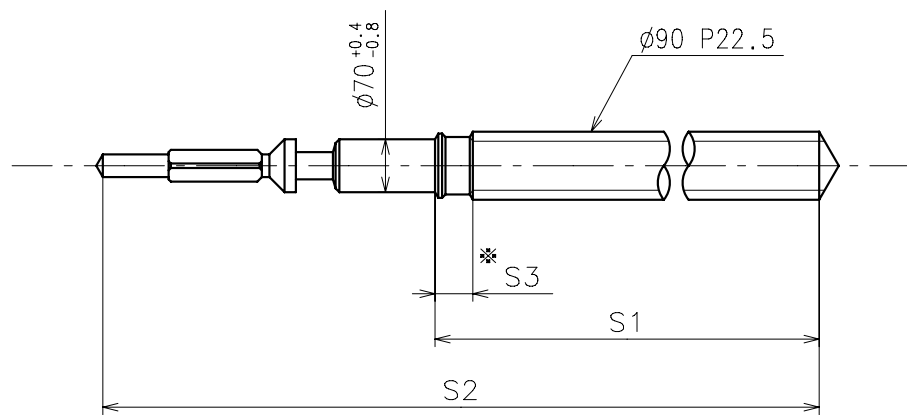


	Parts No.			Dimension	
	Hour wheel	Center wheel	Fourth wheel	K1	K2
Type S (1) VX11B1	0271819	0221819	0241512	60	40
Type L (3) VX11B2	0271635	0221598	0241568	108	40



	L1	L2	L3	L4	L5	L6	T	*1 R
Type S (1) VX11B1	74	107	134	40	MIN: 40	MAX: 22	15	MAX: 750
Type L (3) VX11B2	122	155	182	90	MIN: 40	MAX: 22	15	MAX: 750

※ 1: It is the size taken into consideration for hands attachment.  
Please observe some standard value specified in unbalance when using long hands.



\* Not threaded

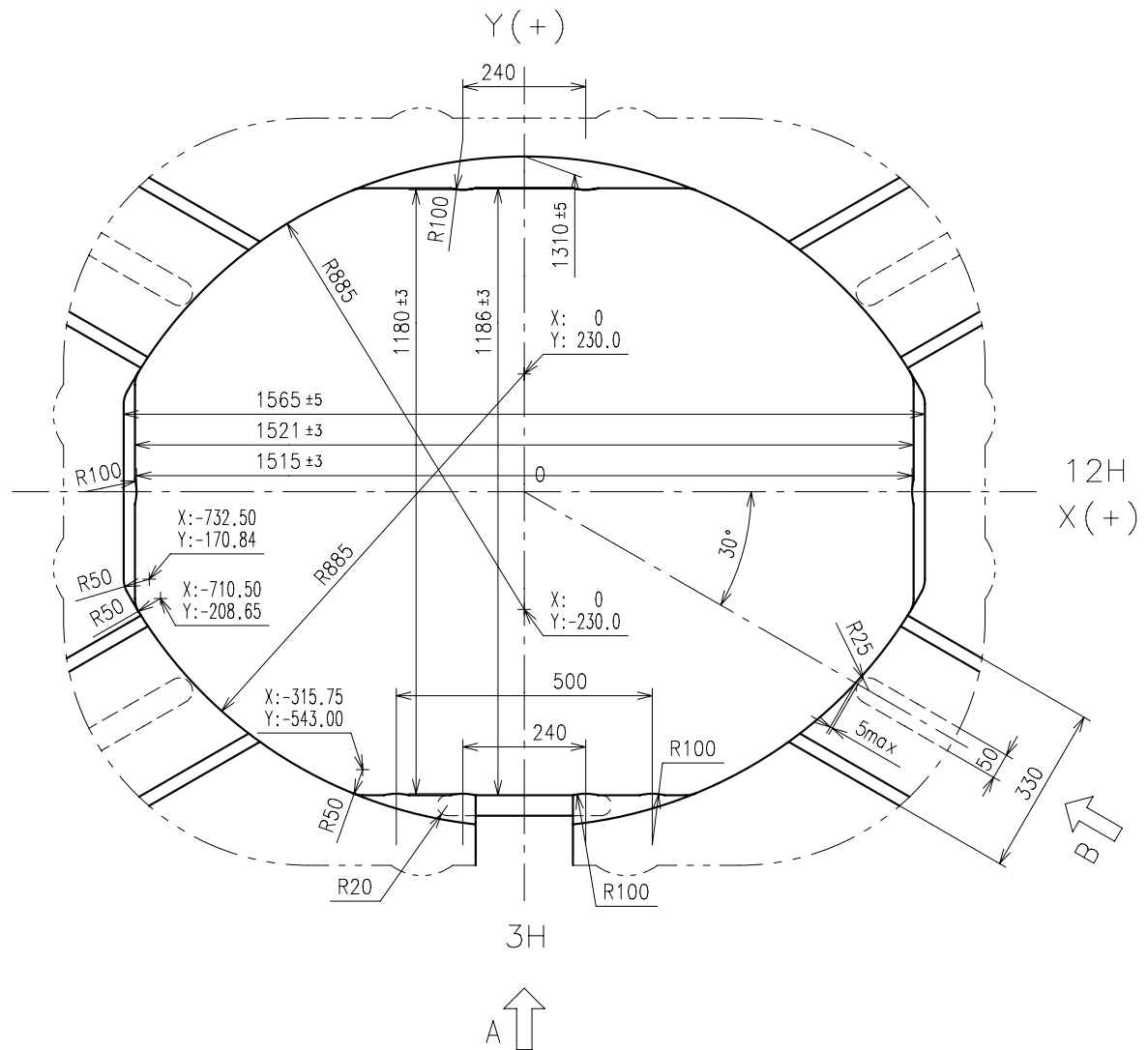
	Part No.	S1	S2	S3
Type-1 (Standard)	0351819	1148	1577	50
Type-2	0351818	2148	2577	1050

Material : Steel

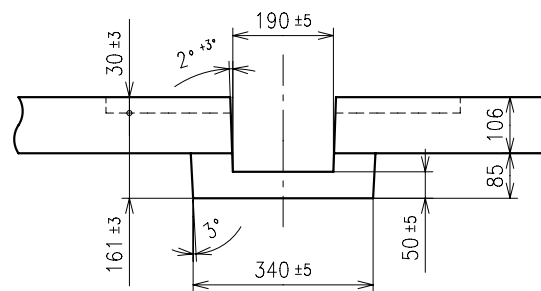
Hardness : Vickers 600±50



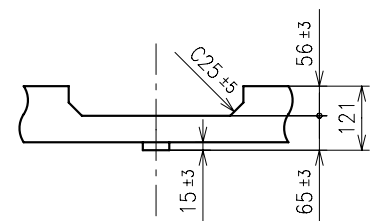




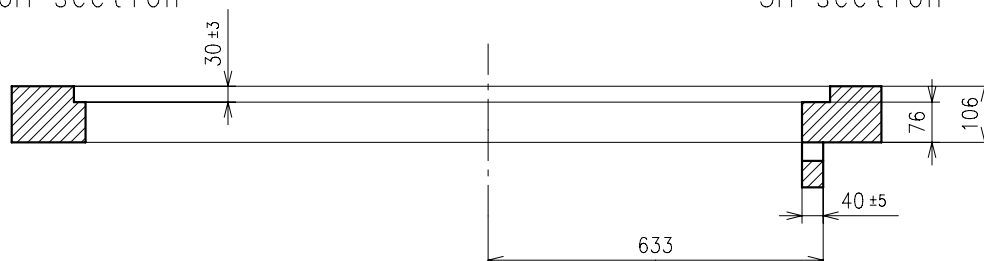
A view



B view



12H-6H section



3H section