

Watch Movement Specification and Drawing

MINI & SLIM

Cal. YL50A

Movement Size

Ø 9.5mm

Casing Diameter

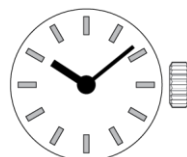
Ø 9.5mm

Height

2.78mm

Battery Life

2 years

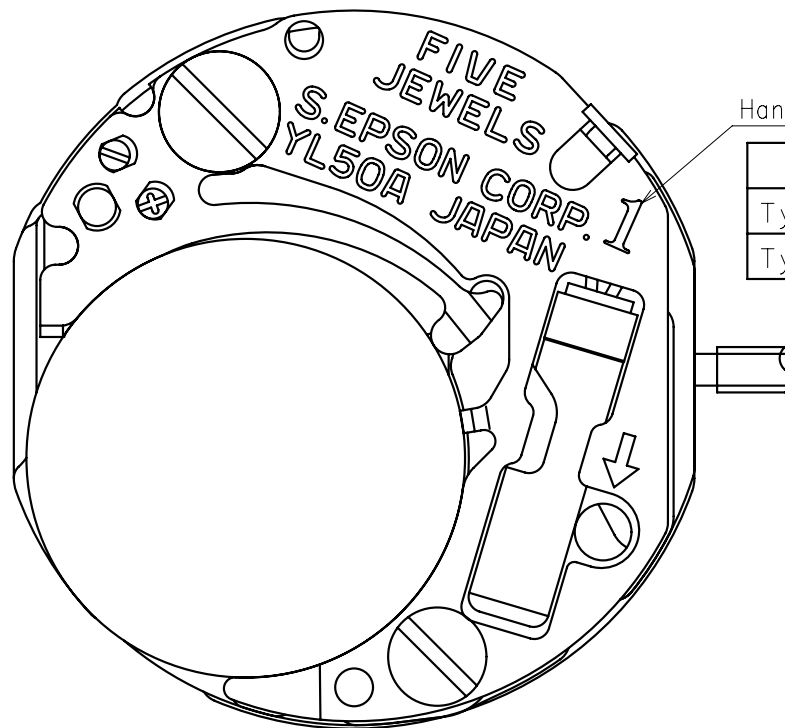


Date: 7/Aug/'20

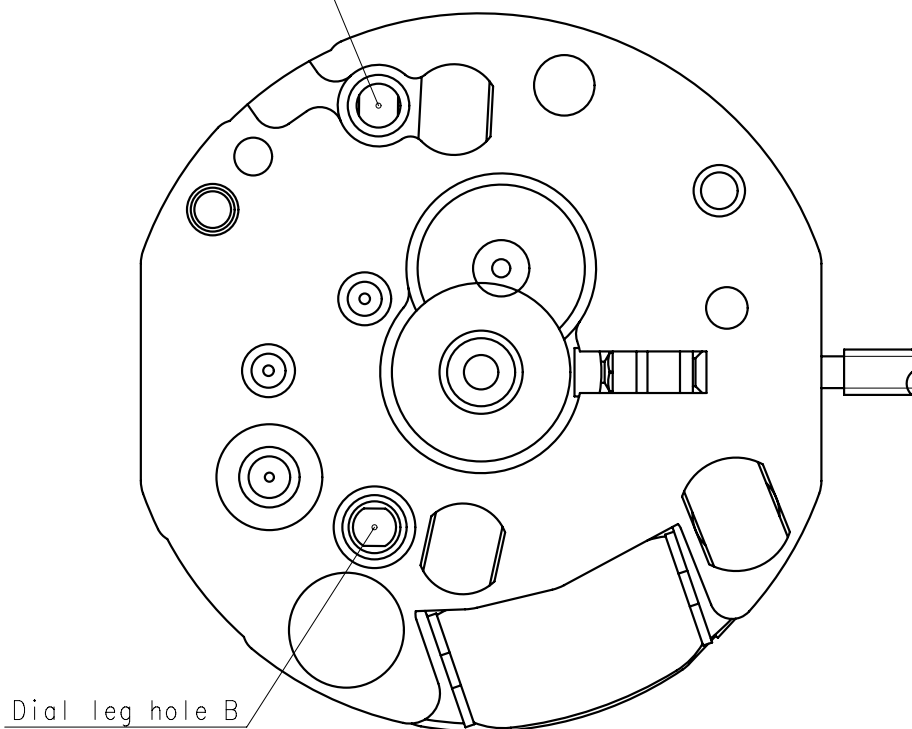
Cal. YL50A

Items	Rev.	Page
Specifications	04	1
Appearance	03	2
Casing	03	3
Hand fitting	05	4
Hand setting stem	01	5
Dial	01	6
Casing ring	01	7

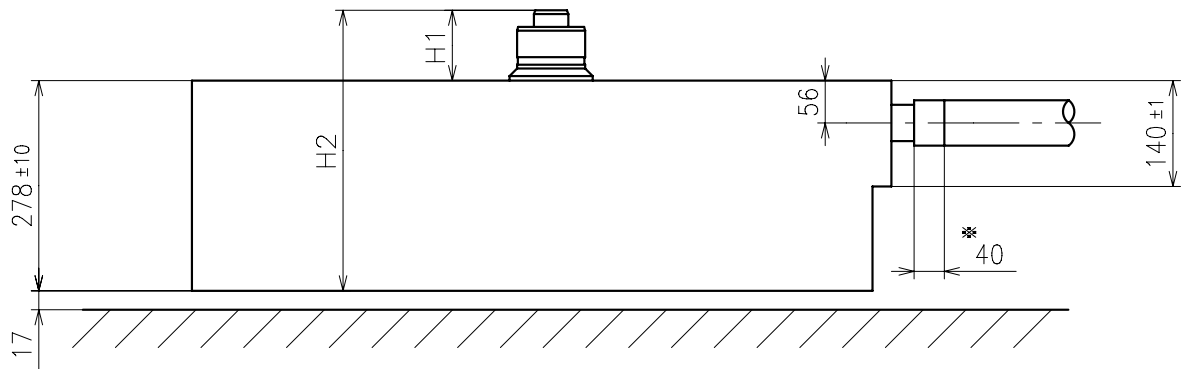
Cal.	YL50A	Specifications	Date : 7/Aug./'20
			Rev. : 04
Analog Quartz Movement / Two Hands(H/M)			
1. MOVEMENT DIMENSIONS			
Outside diameter	φ 9.5mm × 9.00mm(3-9H)		
Casing diameter	φ 9.5mm × 8.50mm(3-9H)		
Total height	2.78mm		
2. TIME STANDARD			
Type of quartz oscillator	Tuning fork		
Frequency of quartz oscillator	32,768 Hz		
Accuracy	±20 seconds per month (on wrist)		
Operating temperature range	－5℃ to +50℃		
Regulation device	Nil (Pre-adjusted)		
3. INDICATOR / FUNCTIONS			
2 Hands	Hour / Minute		
Reset switch			
Setting mechanism	Crown at normal position	: Free	
	Crown pulled out 1st click	: Time setting / Reset	
4. FEATURES			
Jewels	5 Jewels		
Anti-magnetism	Over 1600A/m (Direct current magnetic field)		
Maximum unbalance of hands	Minute hand	: 0.2 μ N・m	
5. BATTERY			
Type / Size	Silver oxide battery / φ 5.8mm × 1.2mm		
Recommended battery	SR512SW (Maxell, Murata, Seizaiken)		
Nominal voltage	1.55 V		
Battery life	Approx. 2 years		
Driving current consumption	Approx. 0.2 μ A		
Operation stopping voltage	1.1 V		
6. SEPARATED PARTS (Parts code)			
Hour wheel	0271932		
Dial washer	0491930		
Hand setting stem	0351931		
Minute wheel	0261930		
Battery	SR512SW		
7. TEST OF ACCURACY			
Equipment to be used	SEIKO quartz tester QT-99, Greiner quartz timer-C , Witschi Q-tester 4000		
Duration of measurement	10 seconds		
Microphone to be used	Electromagnetic detection type		
All specifications are subject to change without notice.			



Dial leg hole A

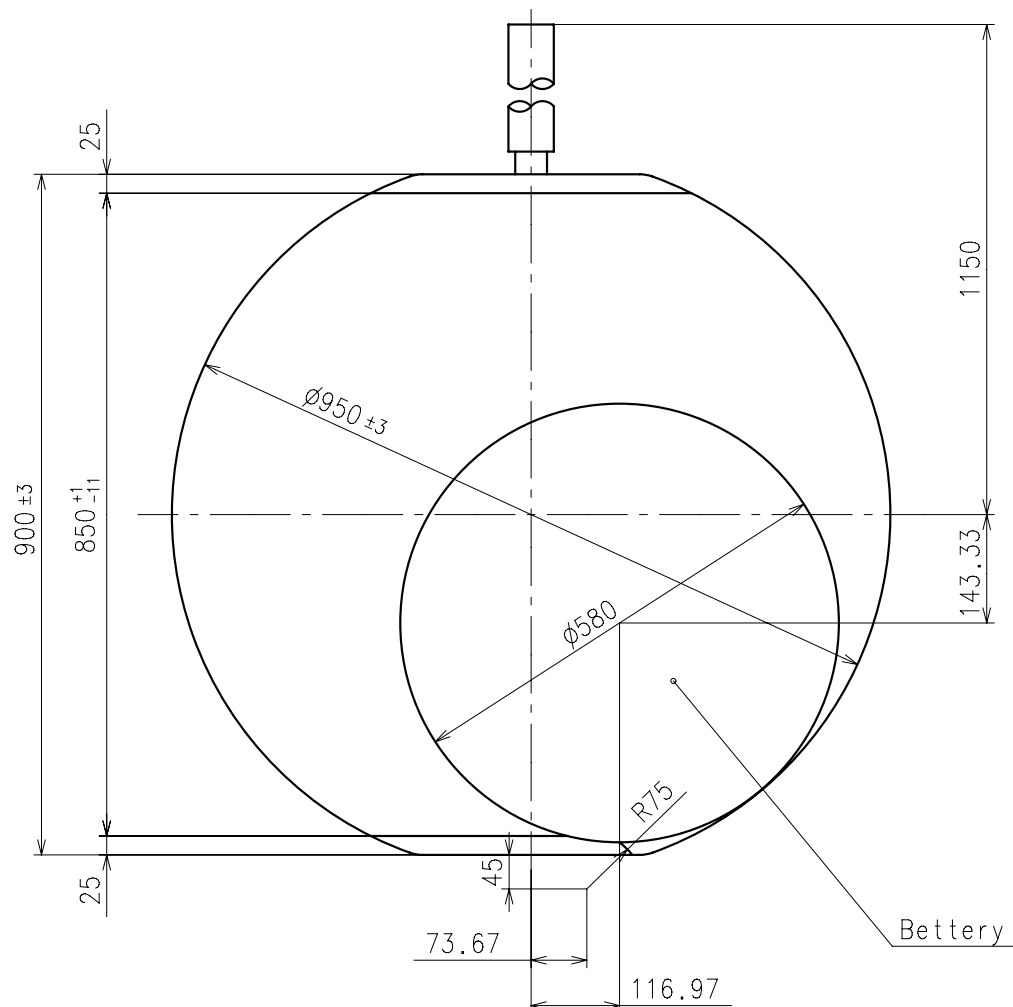


Dial leg hole B

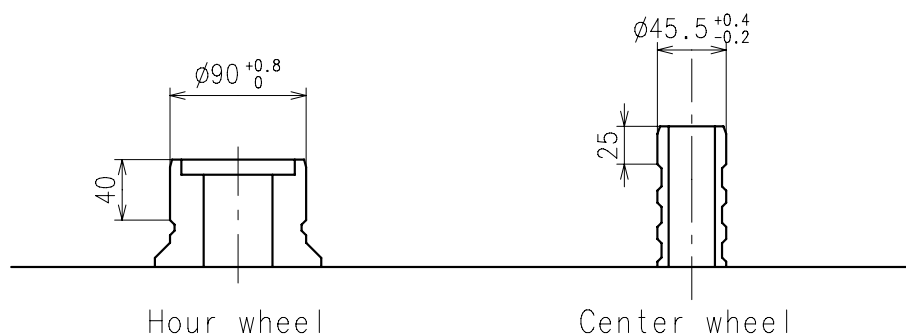


Center post		Type S (1) YL50A1	Type L (3) YL50A2
Maximum height from dial support	H1	93	146
Total height including movement	H2	371	424

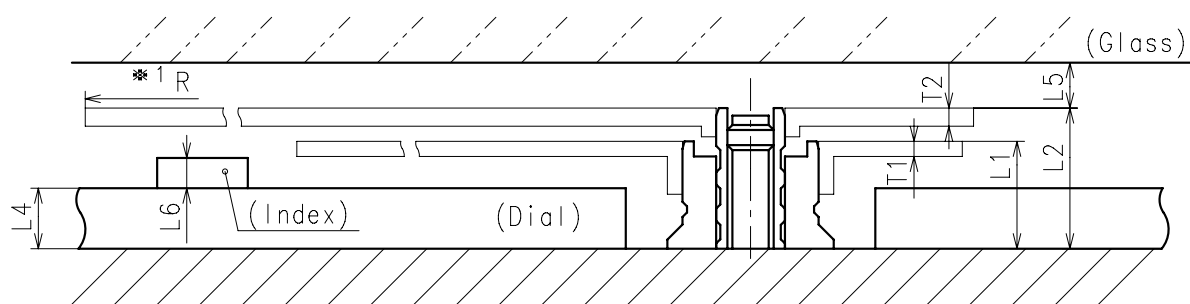
*:Pullout stroke



※ Minute hand unbalance $\leq 0.2\mu\text{N}\cdot\text{m}$ ($20\mu\text{g}\cdot\text{m}$)

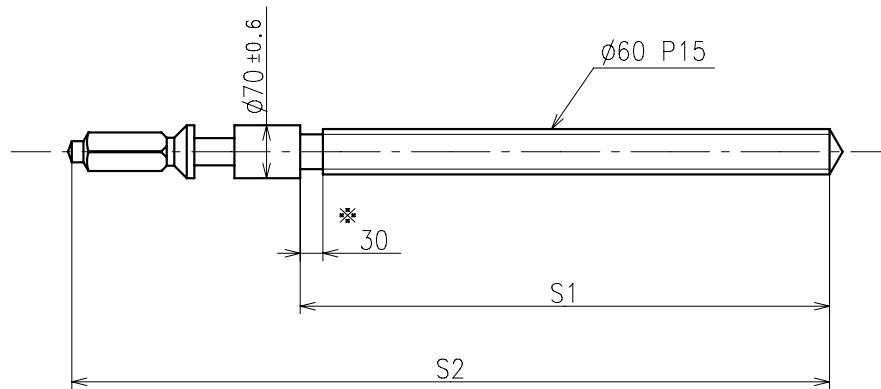


	Parts No.	
	Hour wheel	Center wheel
Type S (1) YL50A1	0271932	0221932
Type L (3) YL50A2	0271931	0221931



	L1	L2	L4	L5	L6	T1	T2	*1 R
Type S (1) YL50A1	71	93	40	MIN: 30	MAX: 20	10	12	MAX: 600
Type L (3) YL50A2	119	146	95	MIN: 30	MAX: 20	10	12	MAX: 600

※ 1: It is the size taken into consideration for hands attachment.
Please observe some standard value specified in unbalance when using long hands.



* Not threaded

	Part No.	S1	S2
Standard	0351931	700	1002

Material : Steel

Hardness : Vickers 600±50

