

Watch Movement Specification and Drawing

MULTI - FUNCTION

Cal. VX36E

Movement Size

10 1/2'''

Casing Diameter

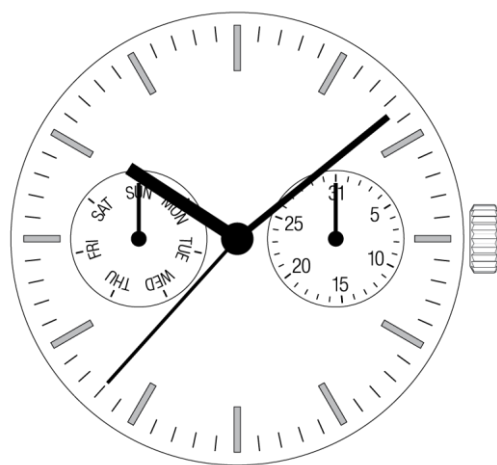
Ø 23.3mm

Height

3.05mm

Battery Life

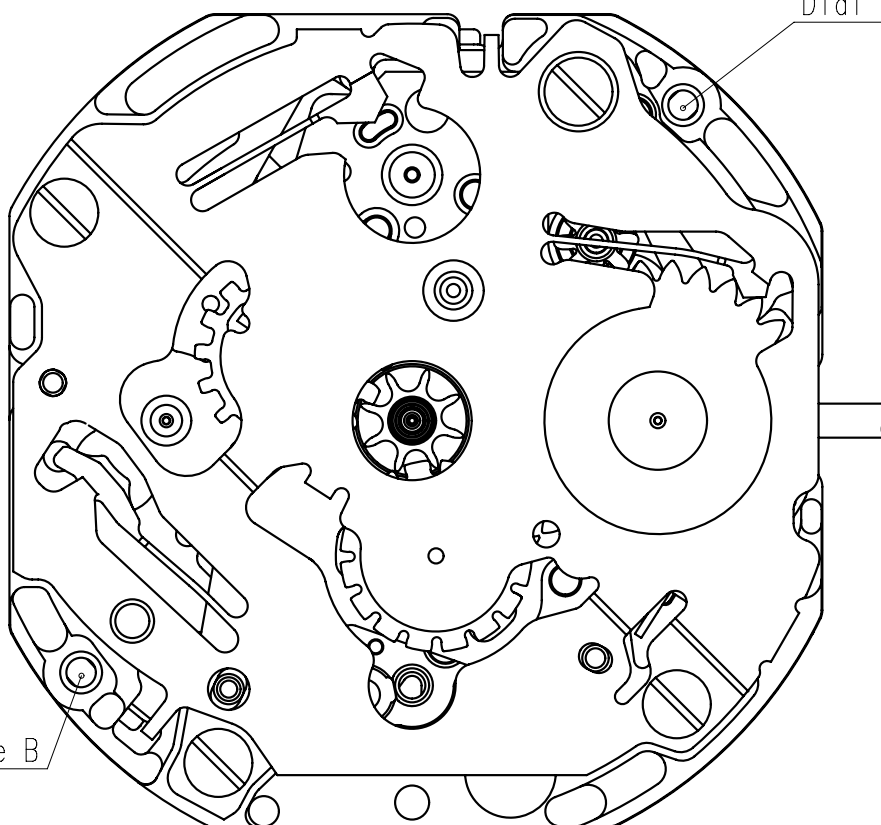
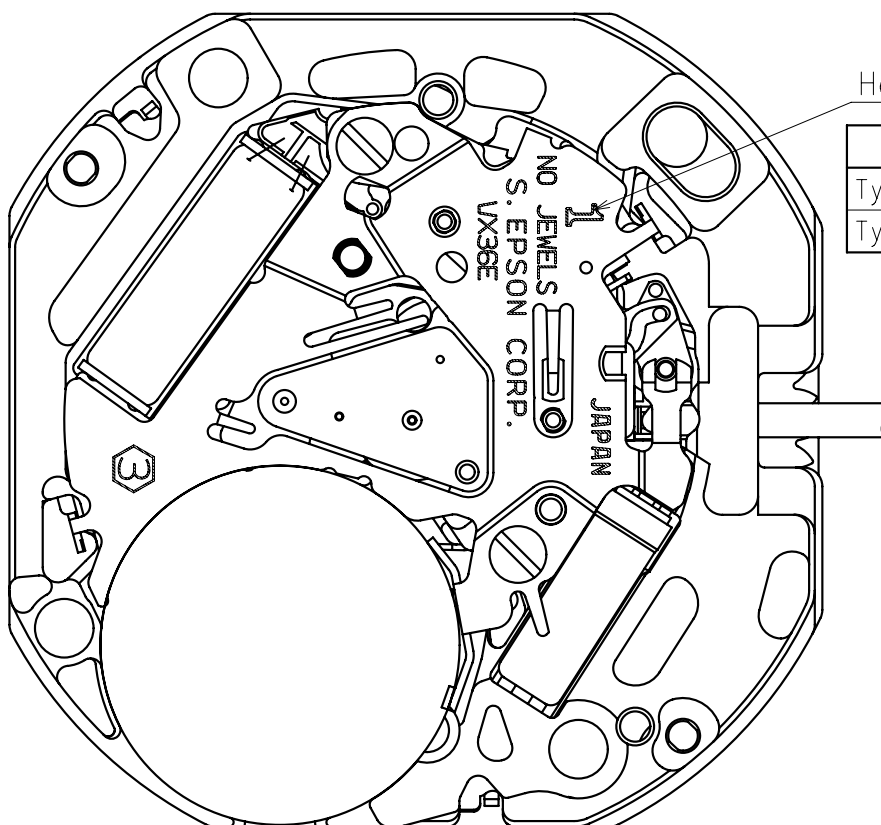
3 years



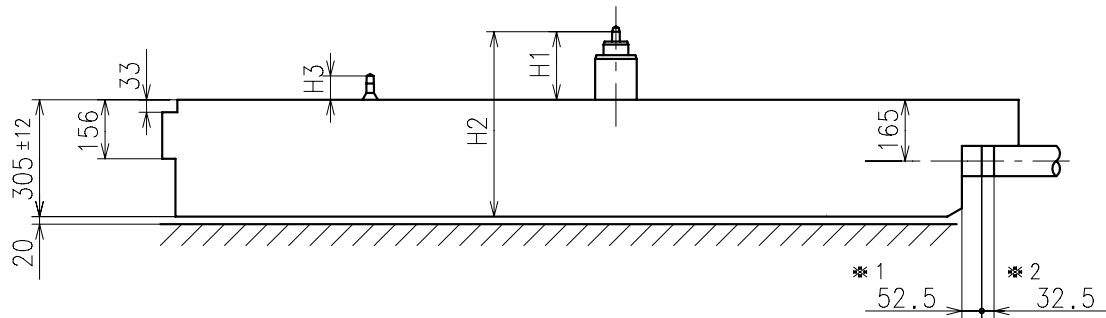
Date: 18/Sep./'20

Cal. VX36E

Items	Rev.	Page
Specifications	03	1
Appearance	01	2
Casing	01	3
Hand fitting	03	4
Hand setting stem	01	5
Dial	01	6
Casing ring	01	7
Operation	00	8



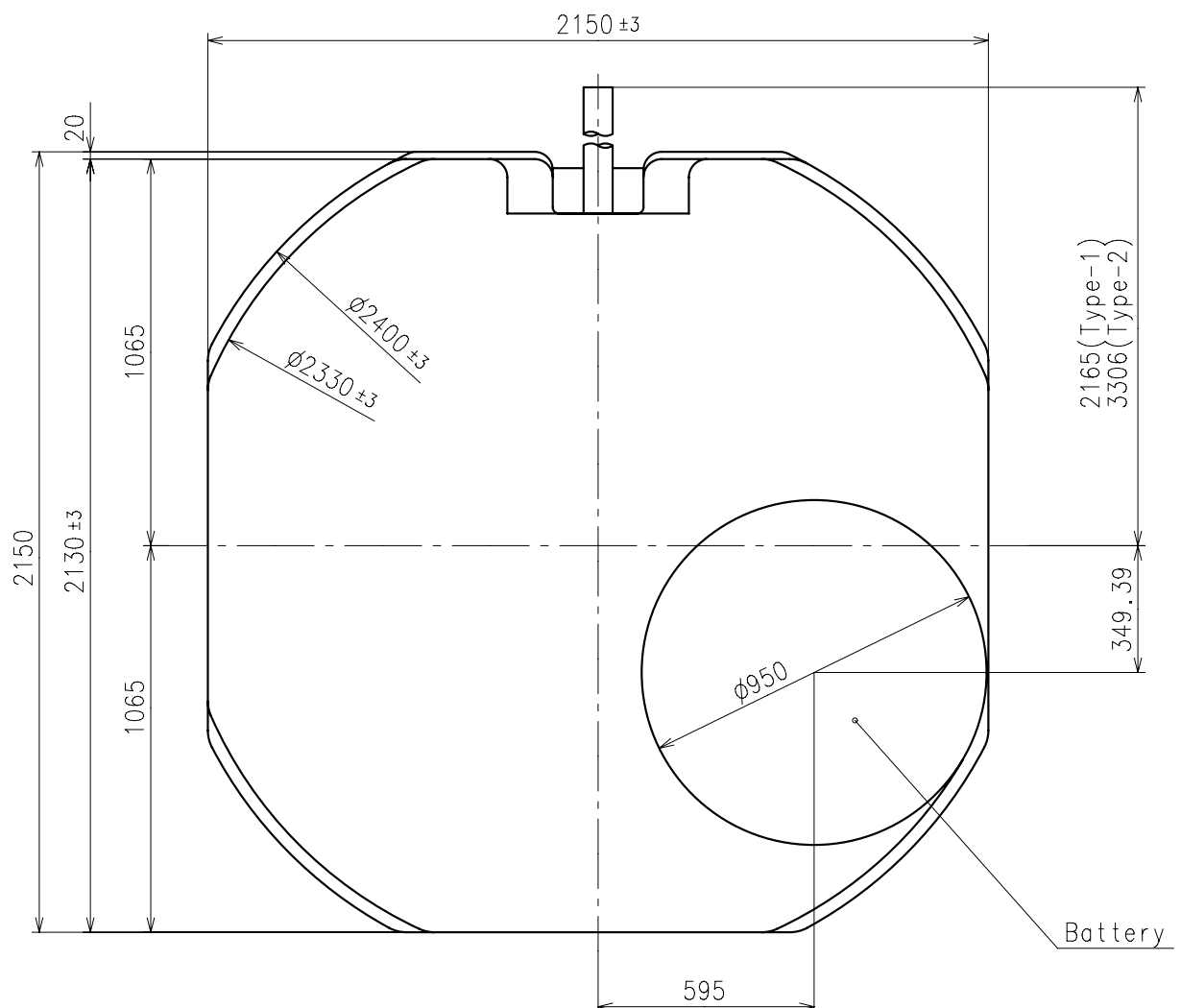
Dial leg hole B



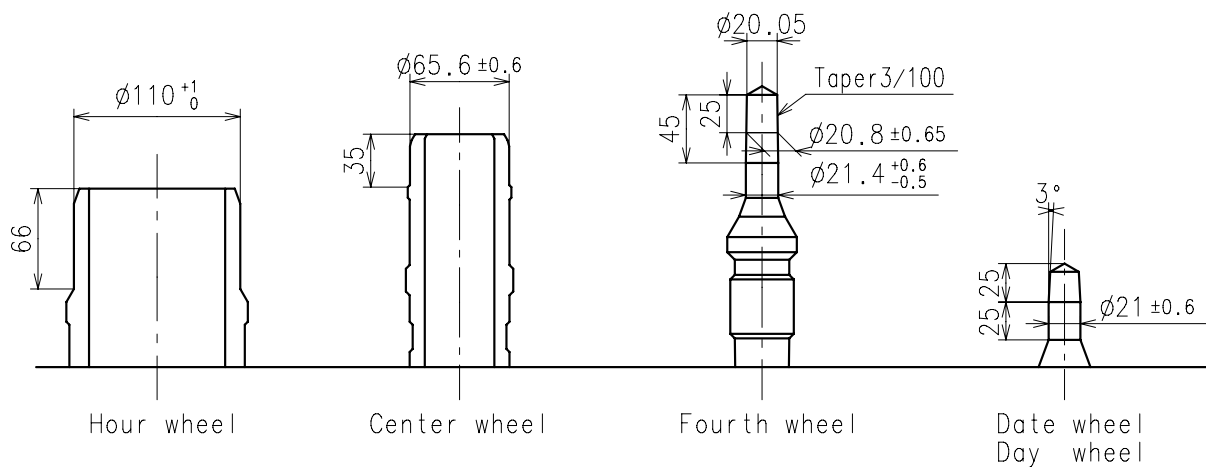
Center post		Type S (1) VX36E1	Type L (3) VX36E2
Maximum height from dial support	H1	180	242
Total height including movement	H2	485	547
Maximum height from dial support	H3	63	111

*1:First pullout stroke

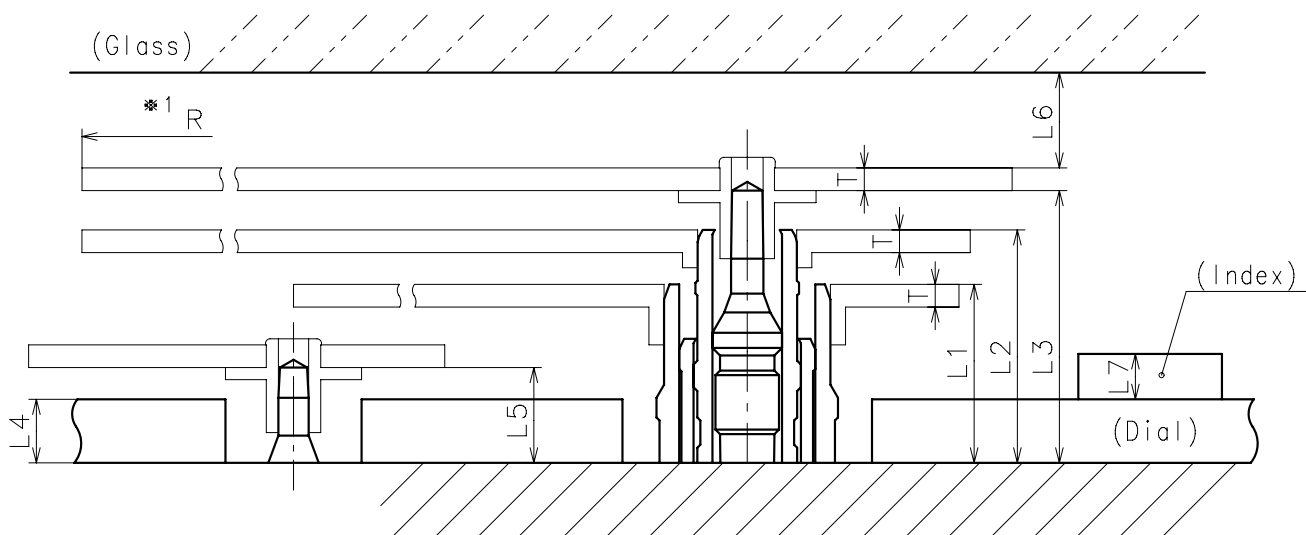
*2:Second pullout stroke



- ※ Hour hand unbalance $\leq 0.5\mu\text{ N}\cdot\text{m}$ ($50\mu\text{ g}\cdot\text{m}$)
- ※ Minute hand unbalance $\leq 0.65\mu\text{ N}\cdot\text{m}$ ($65\mu\text{ g}\cdot\text{m}$)
- ※ Second hand unbalance $\leq 0.07\mu\text{ N}\cdot\text{m}$ ($7\mu\text{ g}\cdot\text{m}$)

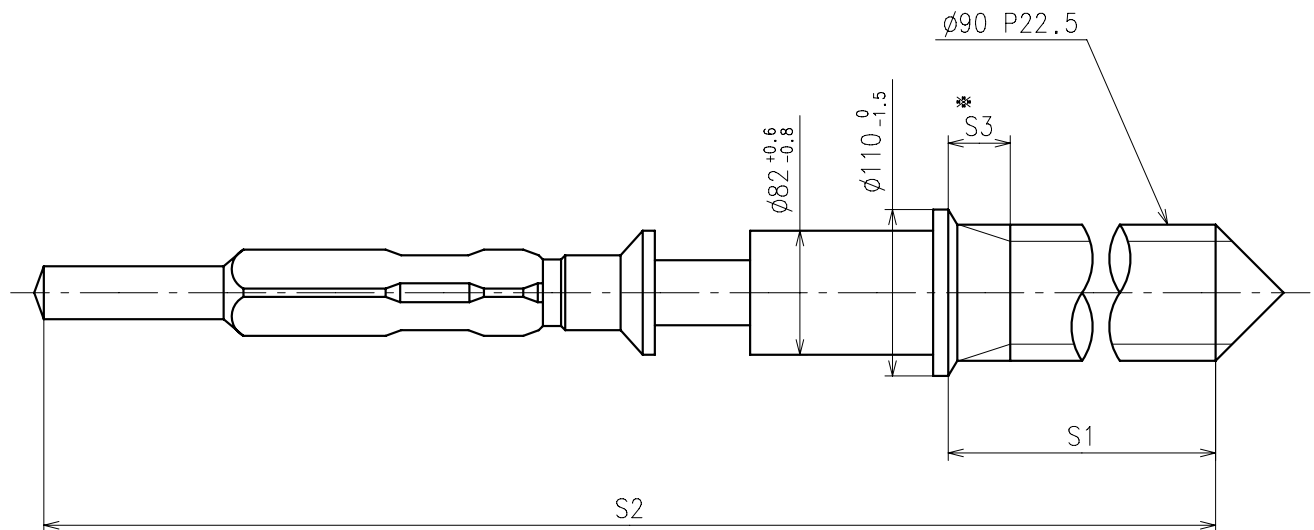


	Parts No.				
	Hour wheel	Center wheel	Fourth wheel	Date wheel	Day wheel
Type S (1) VX36E1	0271563	0221575	0241528	0970538	1002546
Type L (3) VX36E2	0271949	0221588	0241559	0970502	1002547



	L1	L2	L3	L4	L5	L6	L7	T	*1 R
Type S (1) VX36E1	118	154	180	40	63	MIN: 50	MAX: 30	15	MAX: 1250
Type L (3) VX36E2	171	214	242	90	111	MIN: 50	MAX: 30	15	MAX: 1250

※ 1: It is the size taken into consideration for hands attachment.
Please observe some standard value specified in unbalance when using long hands.

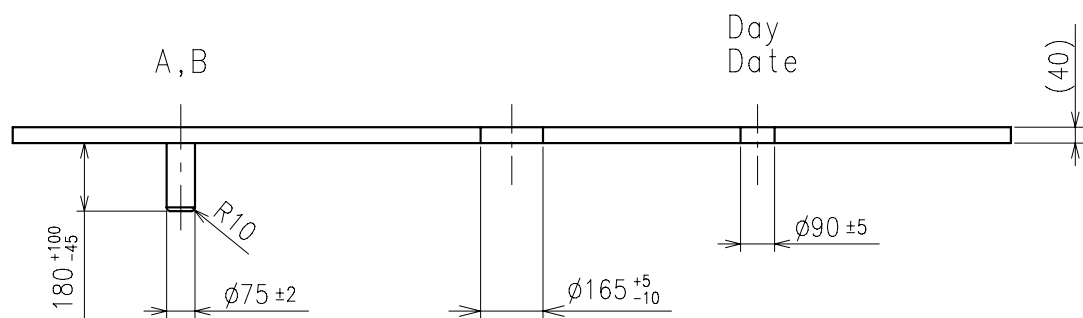
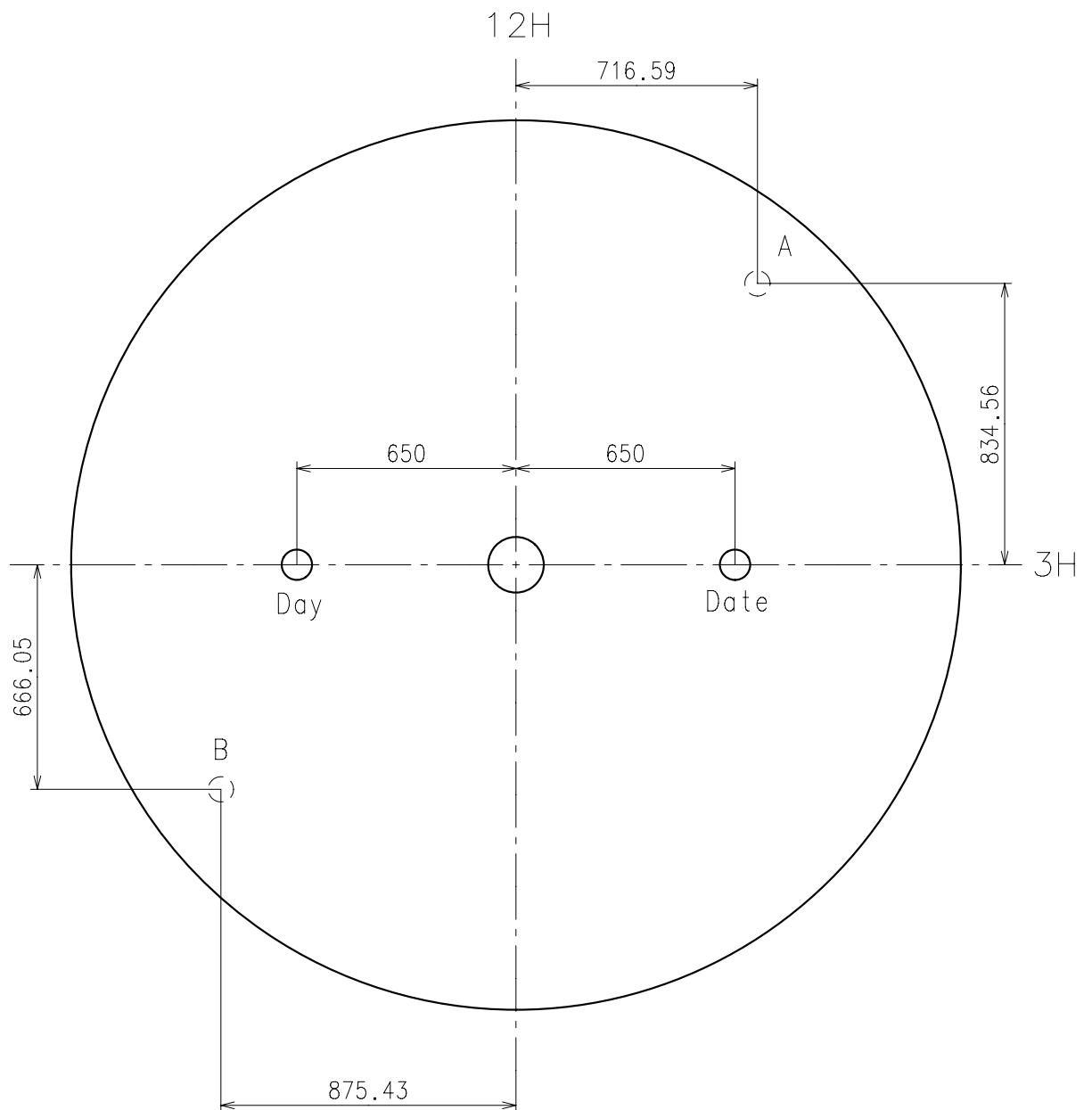


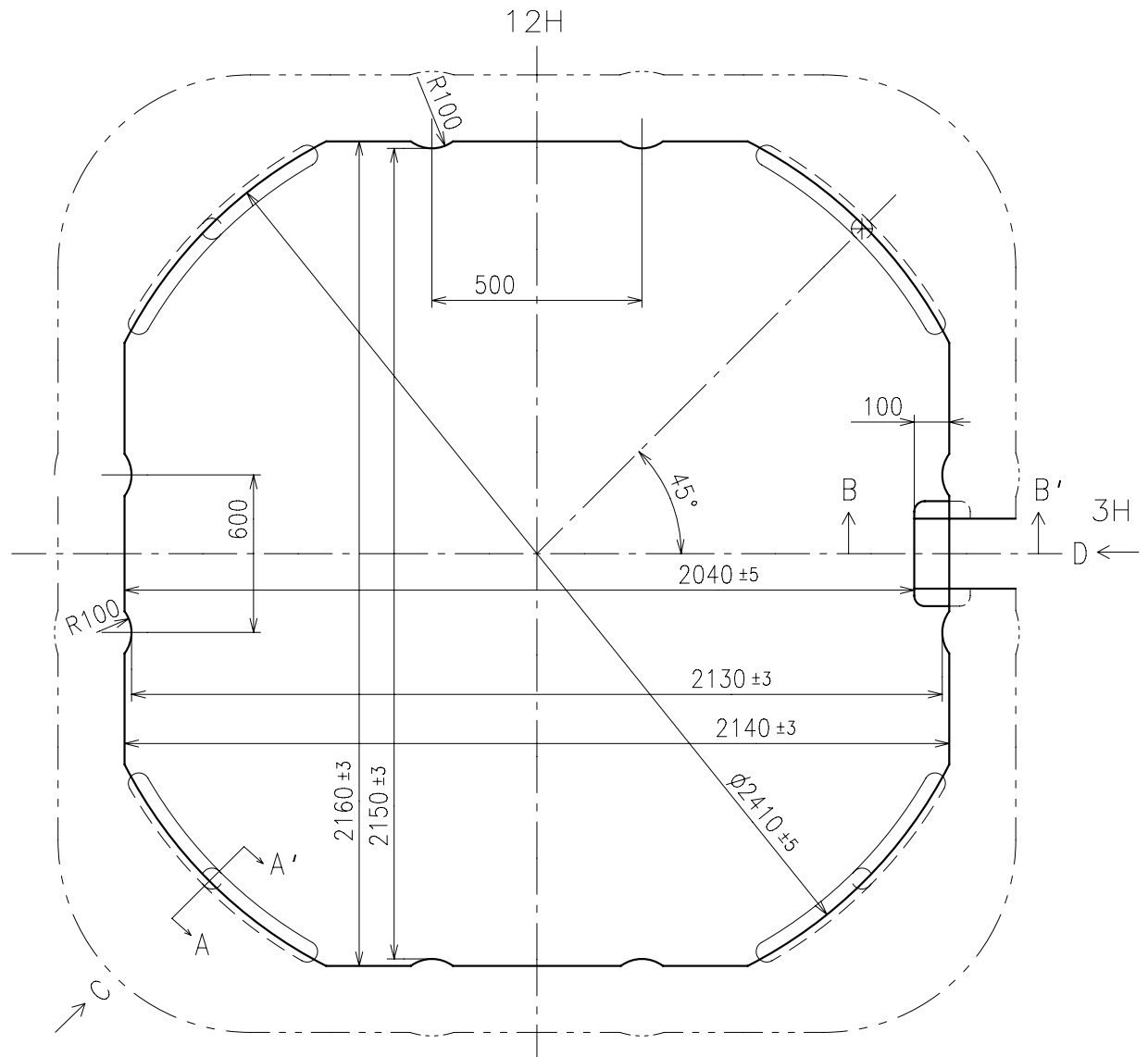
※ Not threaded

	Part No.	S1	S2	※ S3
Type-1 (Standard)	0351177	1366	1964	60
Type-2	0351578	2507	3105	650

Material : Steel

Hardness : Vickers 600±50



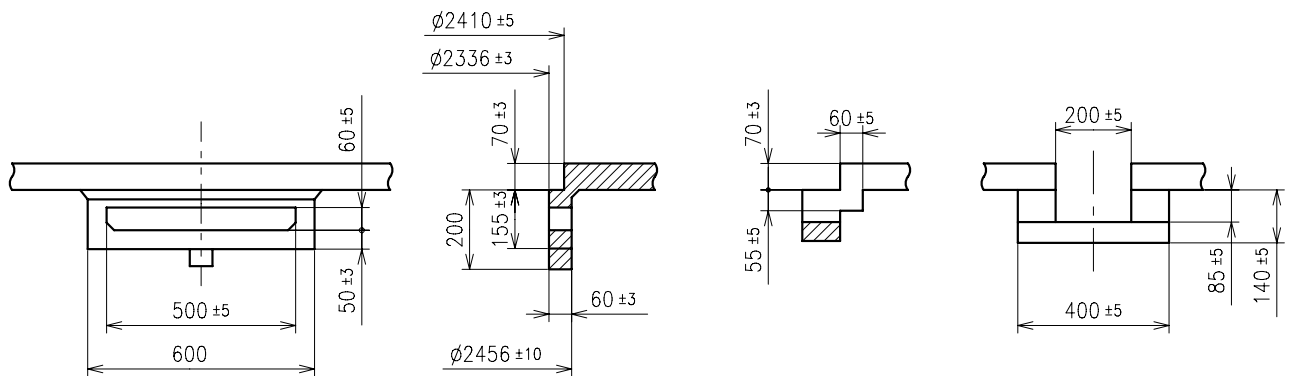


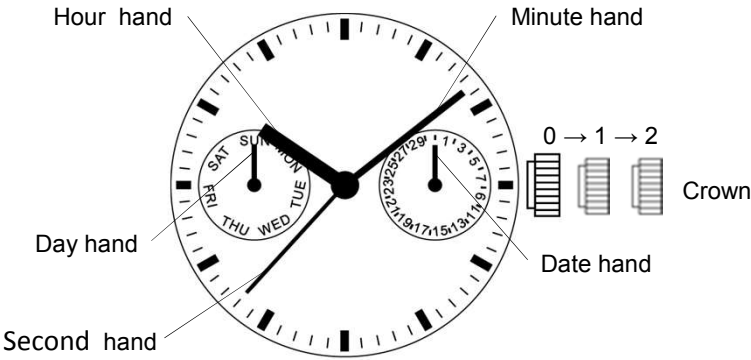
C view

A-A' section

B-B' section

D view





	Crown position		
	0 click	1st click	2nd click
Crown	Free	Turn counterclockwise for date change	Time setting (Day change)