

## Watch Movement Specification and Drawing

### MULTI - FUNCTION

# Cal. VX3JE

Movement Size

10 1/2'''

Casing Diameter

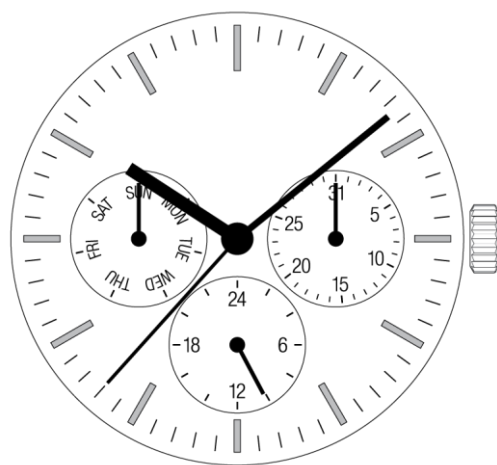
Ø 23.3mm

Height

3.05mm

Battery Life

3 years

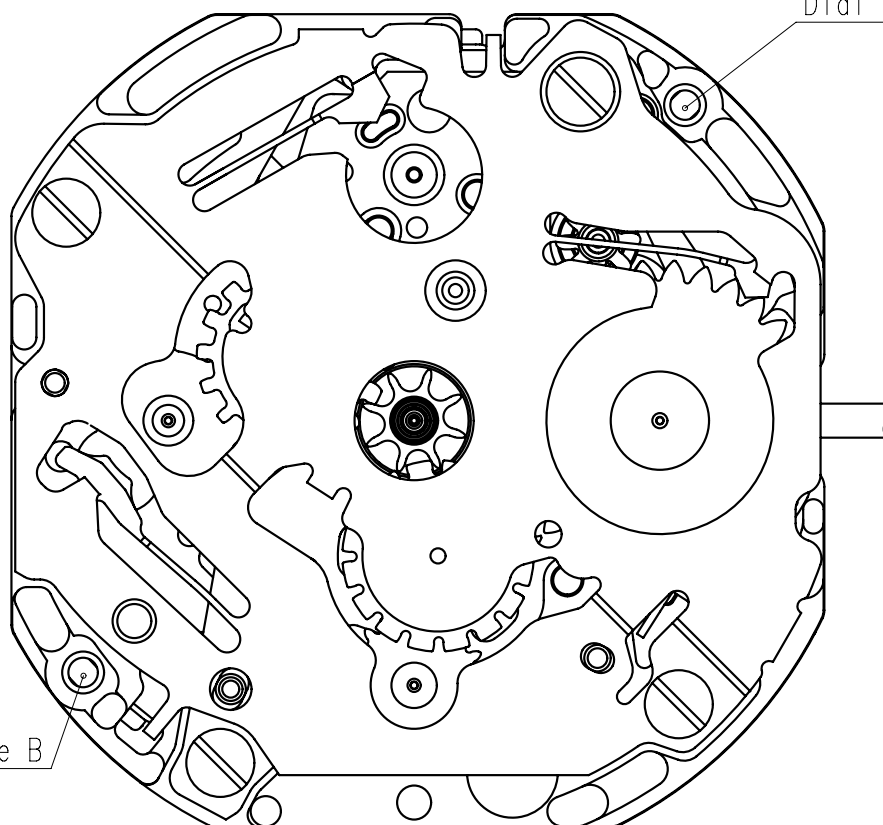
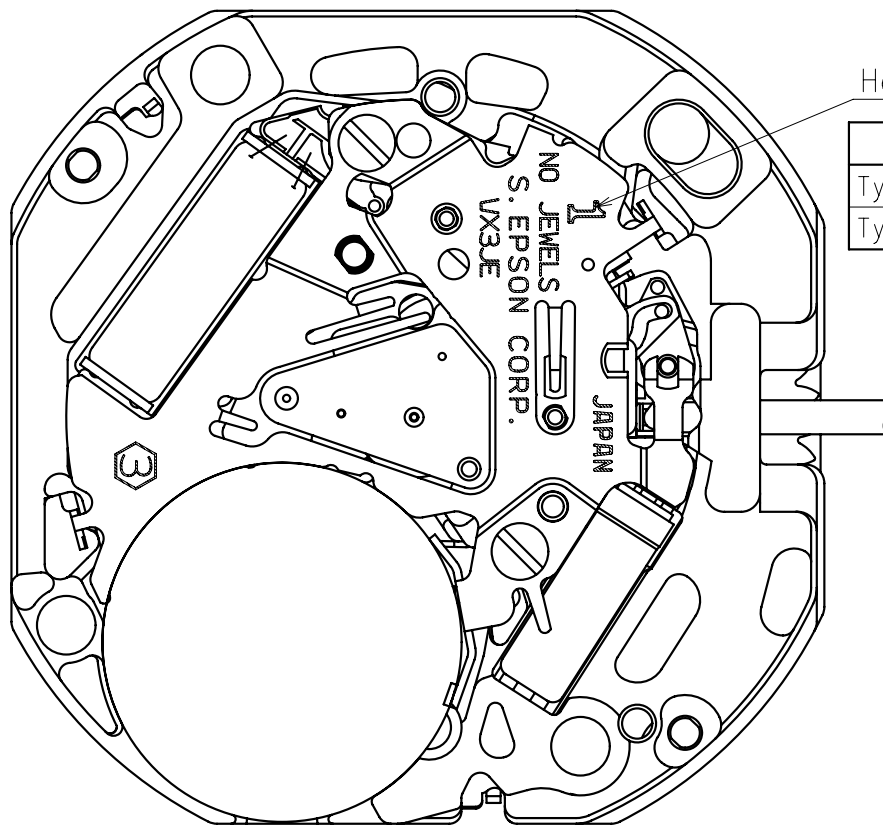


Date: 18/Sep./'20

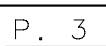
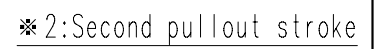
# Cal. VX3JE

Items	Rev.	Page
Specifications	03	1
Appearance	01	2
Casing	01	3
Hand fitting	03	4
Hand setting stem	01	5
Dial	01	6
Casing ring	01	7
Operation	00	8

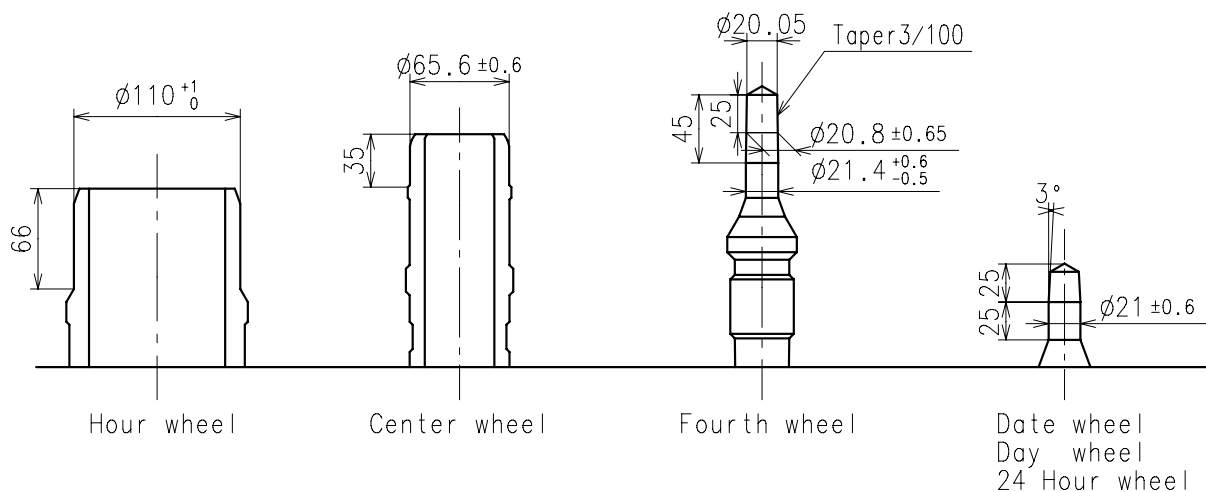
Cal.	VX3JE	Specifications	Date : 18/Sep./'20
			Rev. : 03
Analog Quartz 10 1/2" Slim Movement / 3 hands (H/M/S) and 3 eyes with Day / Date / 24 Hour indicators			
1. MOVEMENT DIMENSIONS			
Outside diameter	φ 24.00mm × 21.50mm(3-9H) × 21.50mm(12-6H)		
Casing diameter	φ 23.30mm × 21.30mm(3-9H) × 21.50mm(12-6H)		
Total height	3.05mm ( including battery )		
2. TIME STANDARD			
Type of quartz oscillator	Tuning fork		
Frequency of quartz oscillator	32,768 Hz		
Accuracy	±20 seconds per month (on wrist)		
Operating temperature range	−5°C to +50°C		
Regulation device	Nil (Pre-adjusted)		
3. INDICATOR / FUNCTIONS			
3 Hands	Hour / Minute / Second		
3 Small hands	Day (9H) / Date (3H) / 24 Hour (6H)		
Reset switch			
Setting mechanism	Crown at normal position	: Free	
	Crown pulled out 1st click	: Instant date change	
	Crown pulled out 2nd click	: Time setting (Day change) / Reset	
4. FEATURES			
Jewels	0 Jewels		
Anti-magnetism	Over 1600A/m ( Direct current magnetic field )		
Maximum unbalance of hands	Second hand	: 0.07 μ N·m	
	Minute hand	: 0.65 μ N·m	
	Hour hand	: 0.5 μ N·m	
5. BATTERY			
Type / Size	Silver oxide battery / φ 9.5mm × t 2.0mm		
Recommended battery	SR920SW (Maxell, Murata, Seizaiken)		
Nominal voltage	1.55 V		
Battery life	Approx. 3 years		
Driving current consumption	Approx. 1.6 μ A		
Operation stopping voltage	1.1 V		
6. SEPARATED PARTS (Parts code)			
Hand setting stem	0351177 or 0351578		
Battery	SR920SW		
7. TEST OF ACCURACY			
Equipment to be used	SEIKO quartz tester QT-99, Greiner quartz timer-C , Witschi Q-tester 4000		
Duration of measurement	10 seconds		
Microphone to be used	Electromagnetic detection type		
All specifications are subject to change without notice.			



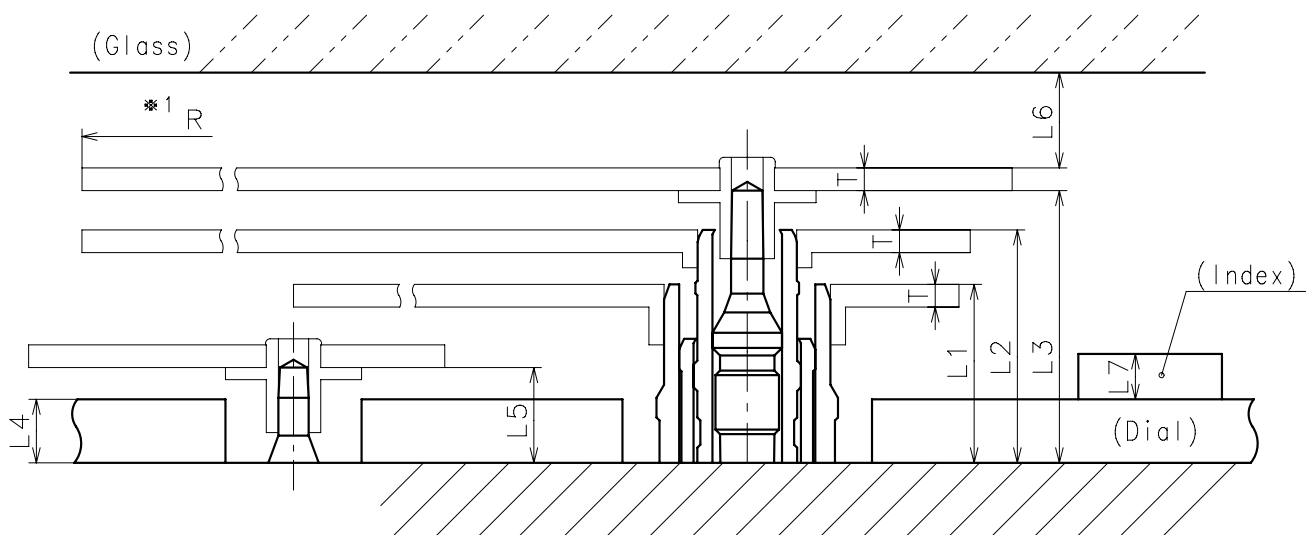
Dial leg hole B



- ※ Hour hand unbalance  $\leq 0.5\mu\text{ N}\cdot\text{m}$  ( $50\mu\text{ g}\cdot\text{m}$ )
- ※ Minute hand unbalance  $\leq 0.65\mu\text{ N}\cdot\text{m}$  ( $65\mu\text{ g}\cdot\text{m}$ )
- ※ Second hand unbalance  $\leq 0.07\mu\text{ N}\cdot\text{m}$  ( $7\mu\text{ g}\cdot\text{m}$ )

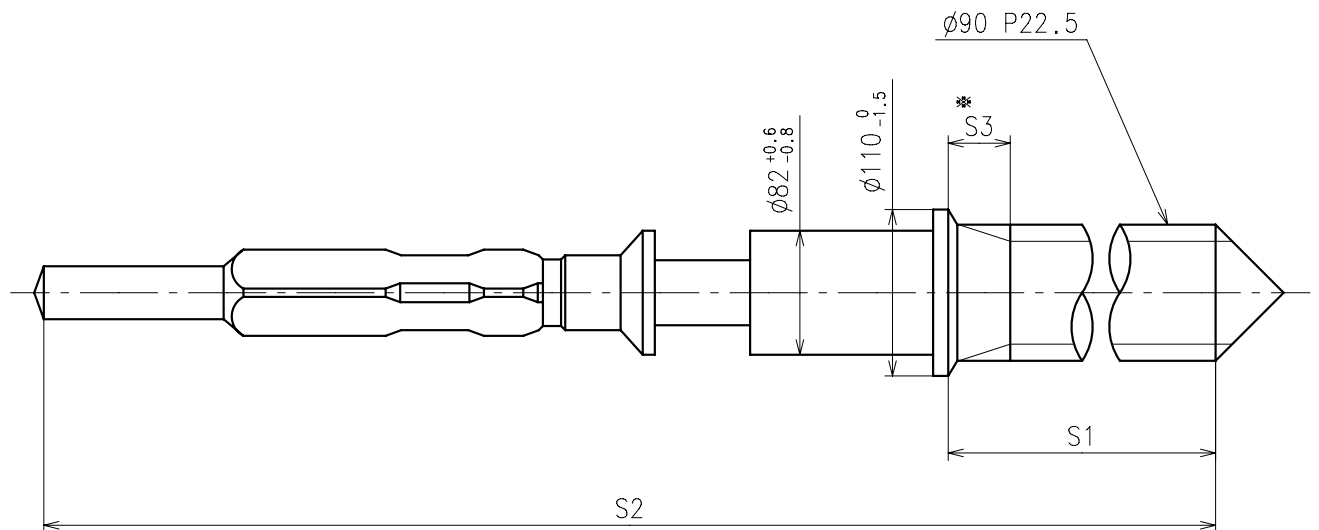


	Parts No.					
	Hour wheel	Center wheel	Fourth wheel	Date wheel	Day wheel	24 Hour wheel
Type S (1) VX3JE1	0271563	0221575	0241528	0970538	1002546	0157543
Type L (3) VX3JE2	0271949	0221588	0241559	0970502	1002547	0157544



	L1	L2	L3	L4	L5	L6	L7	T	*1 R
Type S (1) VX3JE1	118	154	180	40	63	MIN: 50	MAX: 30	15	MAX: 1250
Type L (3) VX3JE2	171	214	242	90	111	MIN: 50	MAX: 30	15	MAX: 1250

※1: It is the size taken into consideration for hands attachment.  
Please observe some standard value specified in unbalance when using long hands.

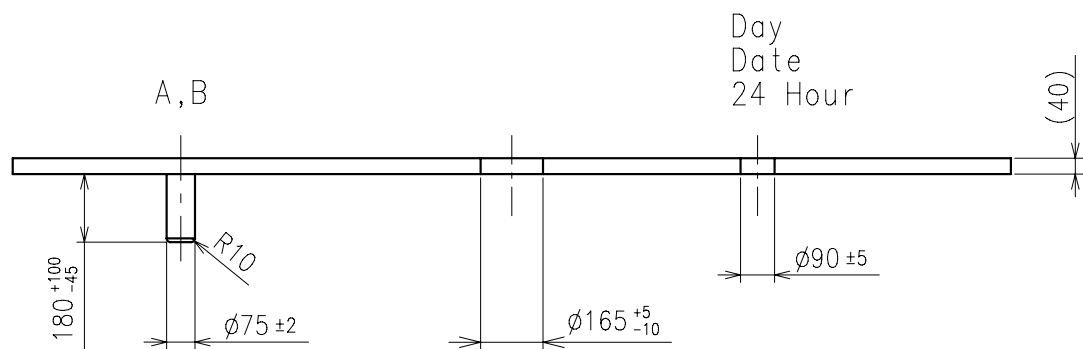
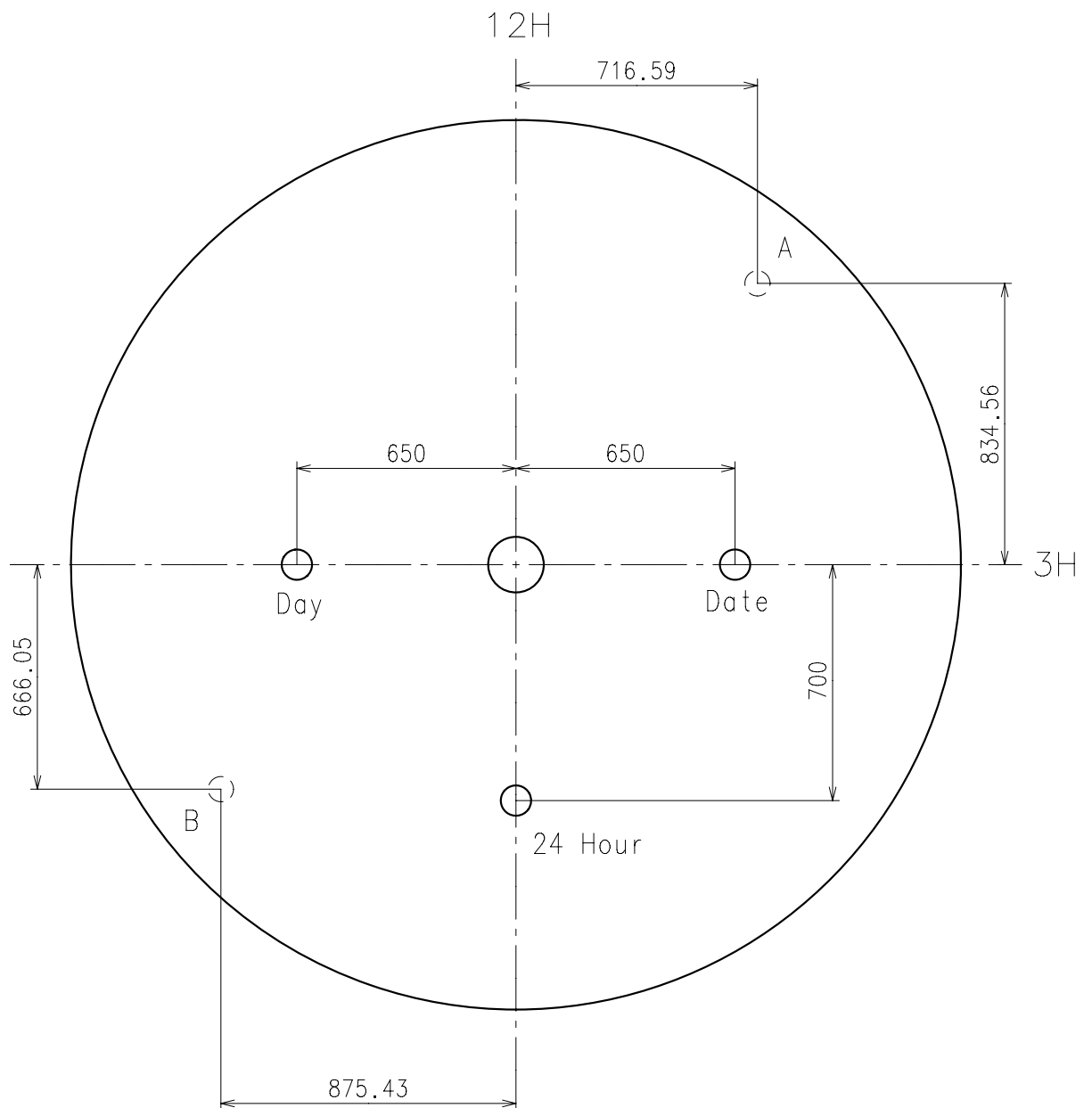


※ Not threaded

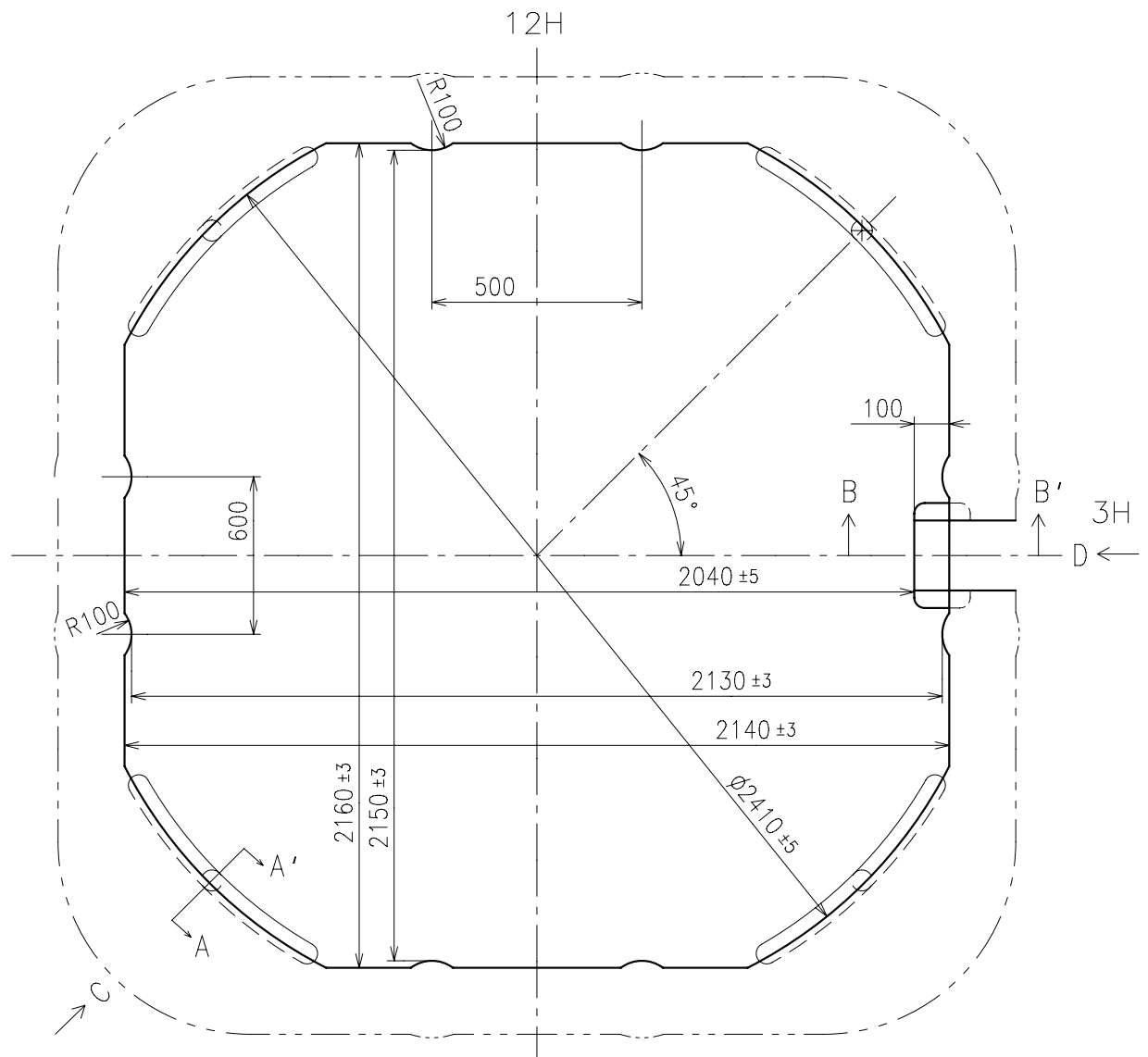
	Part No.	S1	S2	※ S3
Type-1 (Standard)	0351177	1366	1964	60
Type-2	0351578	2507	3105	650

Material : Steel

Hardness : Vickers 600±50





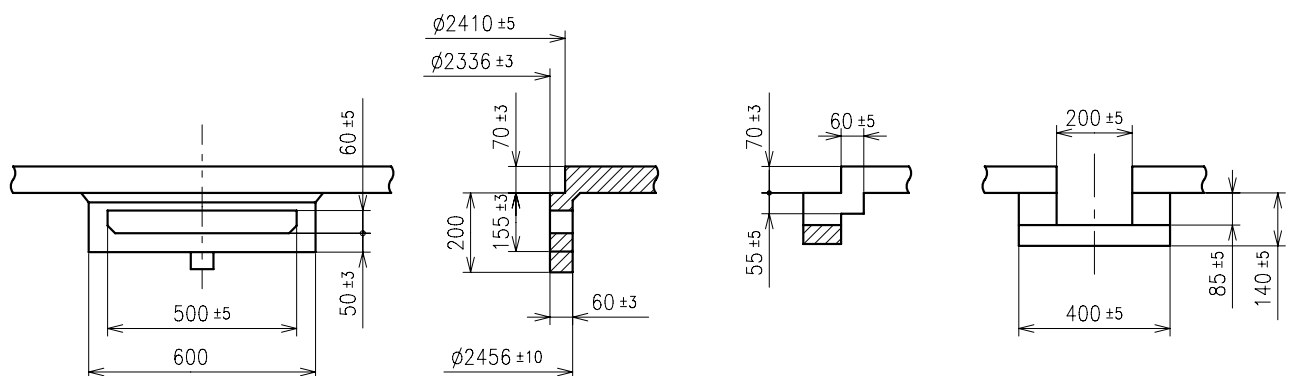


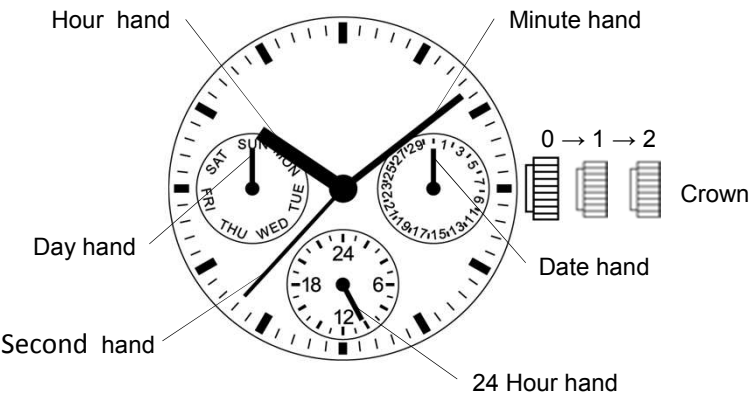
C view

A-A' section

B-B' section

D view





Crown position			
0 click		1st click	2nd click
Crown	Free	Turn counterclockwise for date change	Time setting (Day change)