

Watch Movement Specification and Drawing

MULTI - FUNCTION

Cal. VX3NE

Movement Size

10 1/2'''

Casing Diameter

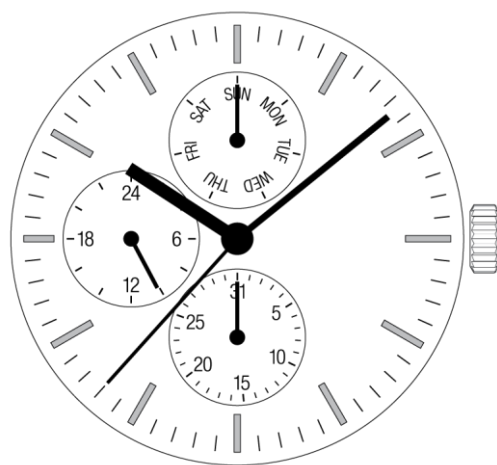
Ø 23.3mm

Height

3.05mm

Battery Life

3 years

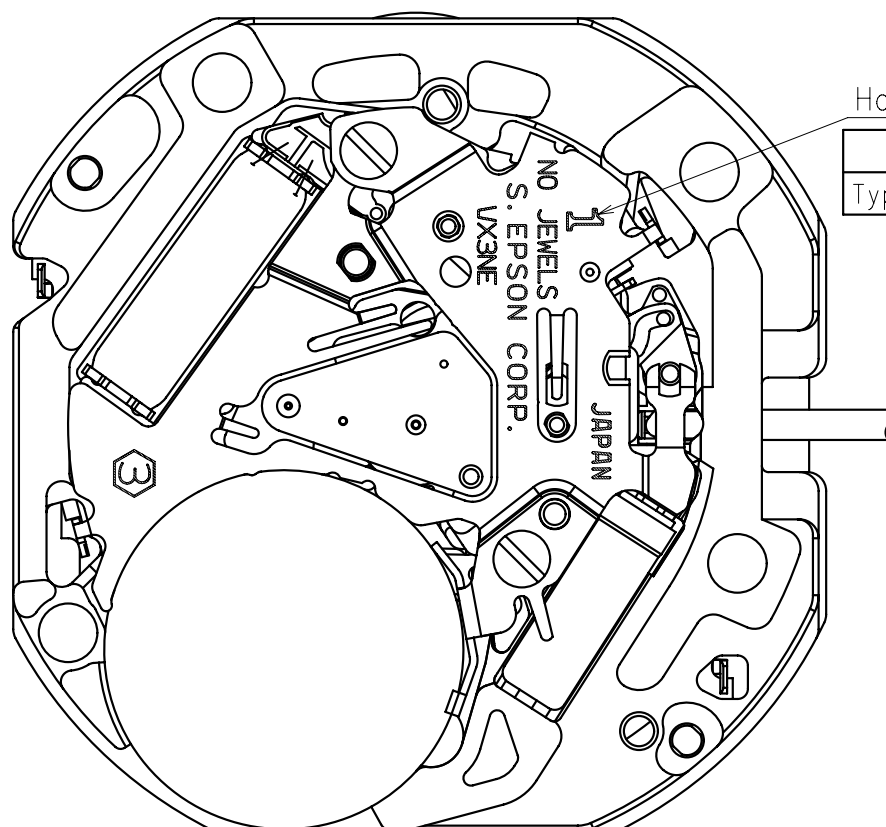


Date: 24/May/'22

Cal. VX3NE

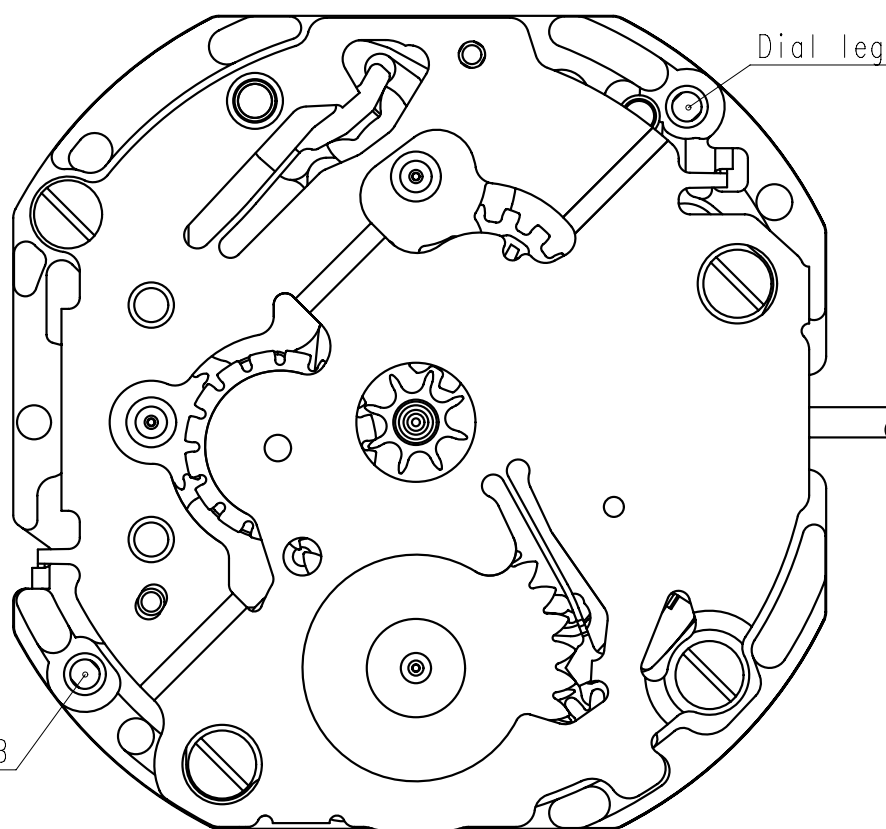
Items	Rev.	Page
Specifications	05	1
Appearance	04	2
Casing	06	3
Hand fitting	07	4
Hand setting stem	03	5
Dial	01	6
Casing ring	01	7
Operation	00	8

Cal.	VX3NE	Date : 18/Sep./'20
	Specifications	Rev. : 05
	<p align="center">Analog Quartz 10 1/2" Slim Movement / 3 hands (H/M/S) and 3 eyes with Day / Date / 24 Hour indicators</p>	
	1. MOVEMENT DIMENSIONS	
	Outside diameter	ϕ 24.00mm × 21.50mm(3-9H) × 21.65mm(12-6H)
	Casing diameter	ϕ 23.30mm × 21.30mm(3-9H) × 21.50mm(12-6H)
	Total height	3.05mm (including battery)
	2. TIME STANDARD	
	Type of quartz oscillator	Tuning fork
	Frequency of quartz oscillator	32,768 Hz
	Accuracy	±20 seconds per month (on wrist)
	Operating temperature range	-5°C to +50°C
	Regulation device	Nil (Pre-adjusted)
	3. INDICATOR / FUNCTIONS	
	3 Hands	Hour / Minute / Second
	3 Small hands	Day (12H) / Date (6H) / 24 Hour (9H)
	Reset switch	
	Setting mechanism	Crown at normal position : Free
		Crown pulled out 1st click : Instant date change
		Crown pulled out 2nd click : Time setting (Day change) / Reset
	4. FEATURES	
	Jewels	0 Jewels
	Anti-magnetism	Over 1600A/m (Direct current magnetic field)
	Maximum unbalance of hands	Second hand : 0.07 μ N•m
		Minute hand : 0.6 μ N•m
		Hour hand : 0.5 μ N•m
	5. BATTERY	
	Type / Size	Silver oxide battery / ϕ 9.5mm × t 2.0mm
	Recommended battery	SR920SW (Maxell, Murata, Seizaiken)
	Nominal voltage	1.55 V
	Battery life	Approx. 3 years
	Driving current consumption	Approx. 1.6 μ A
	Operation stopping voltage	1.1 V
	6. SEPARATED PARTS (Parts code)	
	Hand setting stem	0351177 or 0351578
	Battery	SR920SW
	7. TEST OF ACCURACY	
	Equipment to be used	SEIKO quartz tester QT-99, Greiner quartz timer-C , Witschi Q-tester 4000
	Duration of measurement	10 seconds
	Microphone to be used	Electromagnetic detection type
All specifications are subject to change without notice.		



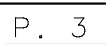
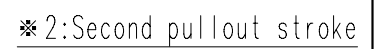
Hands type

	Mark
Type S (1)	1

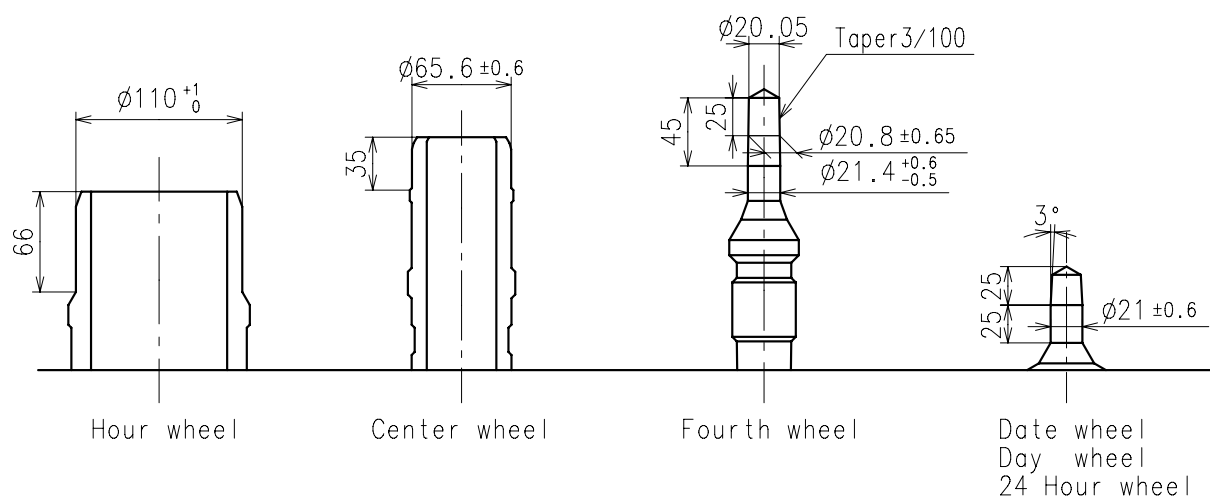


Dial leg hole A

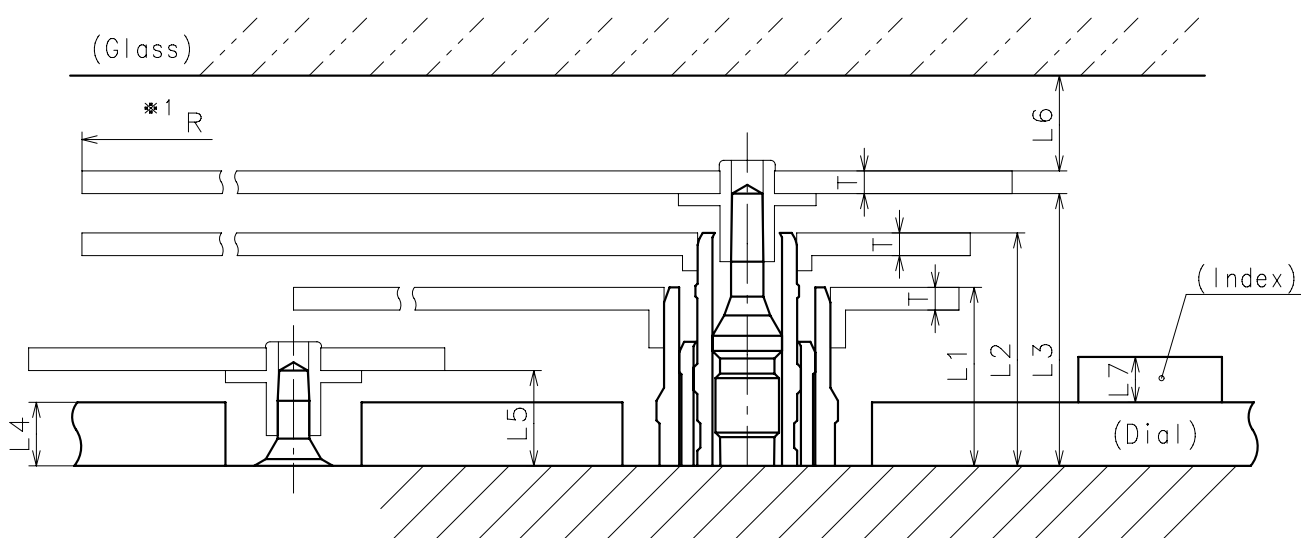
Dial leg hole B



- ※ Hour hand unbalance $\leq 0.5\mu \text{ N} \cdot \text{m}$ ($50\mu \text{ g} \cdot \text{m}$)
- ※ Minute hand unbalance $\leq 0.6\mu \text{ N} \cdot \text{m}$ ($60\mu \text{ g} \cdot \text{m}$)
- ※ Second hand unbalance $\leq 0.07\mu \text{ N} \cdot \text{m}$ ($7\mu \text{ g} \cdot \text{m}$)

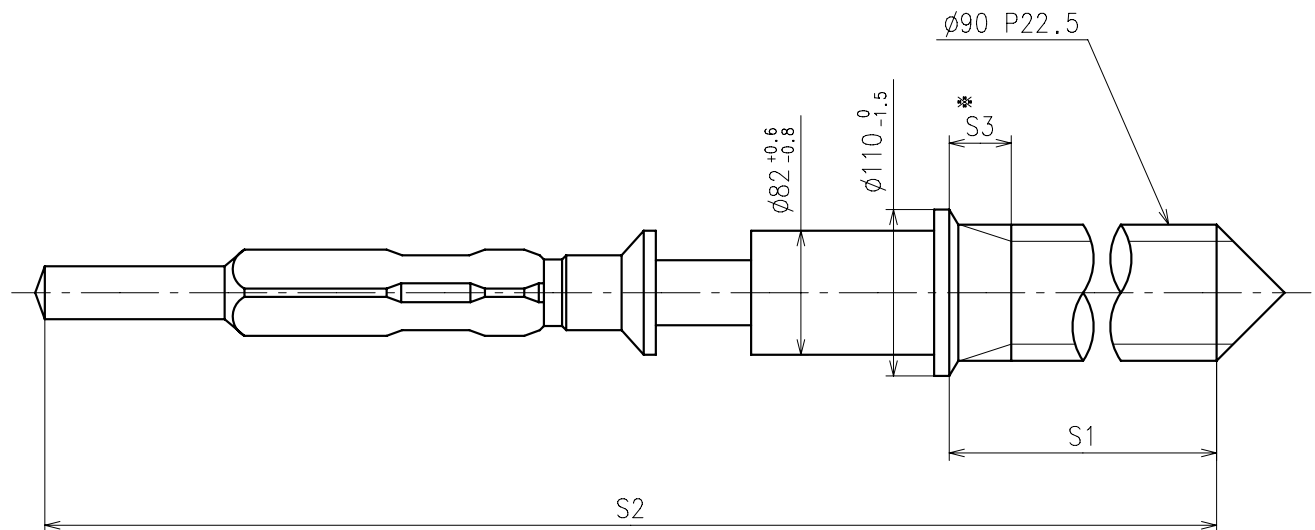


	Parts No.					
	Hour wheel	Center wheel	Fourth wheel	Date wheel	Day wheel	24 Hour wheel
Type S (1) VX3NE1	0271563	0221575	0241528	0970538	1002546	1002503



	L1	L2	L3	L4	L5	L6	L7	T	*1 R
Type S (1) VX3NE1	118	154	180	40	63	MIN: 50	MAX: 30	15	MAX: 1250

※ 1: It is the size taken into consideration for hands attachment.
Please observe some standard value specified in unbalance when using long hands.

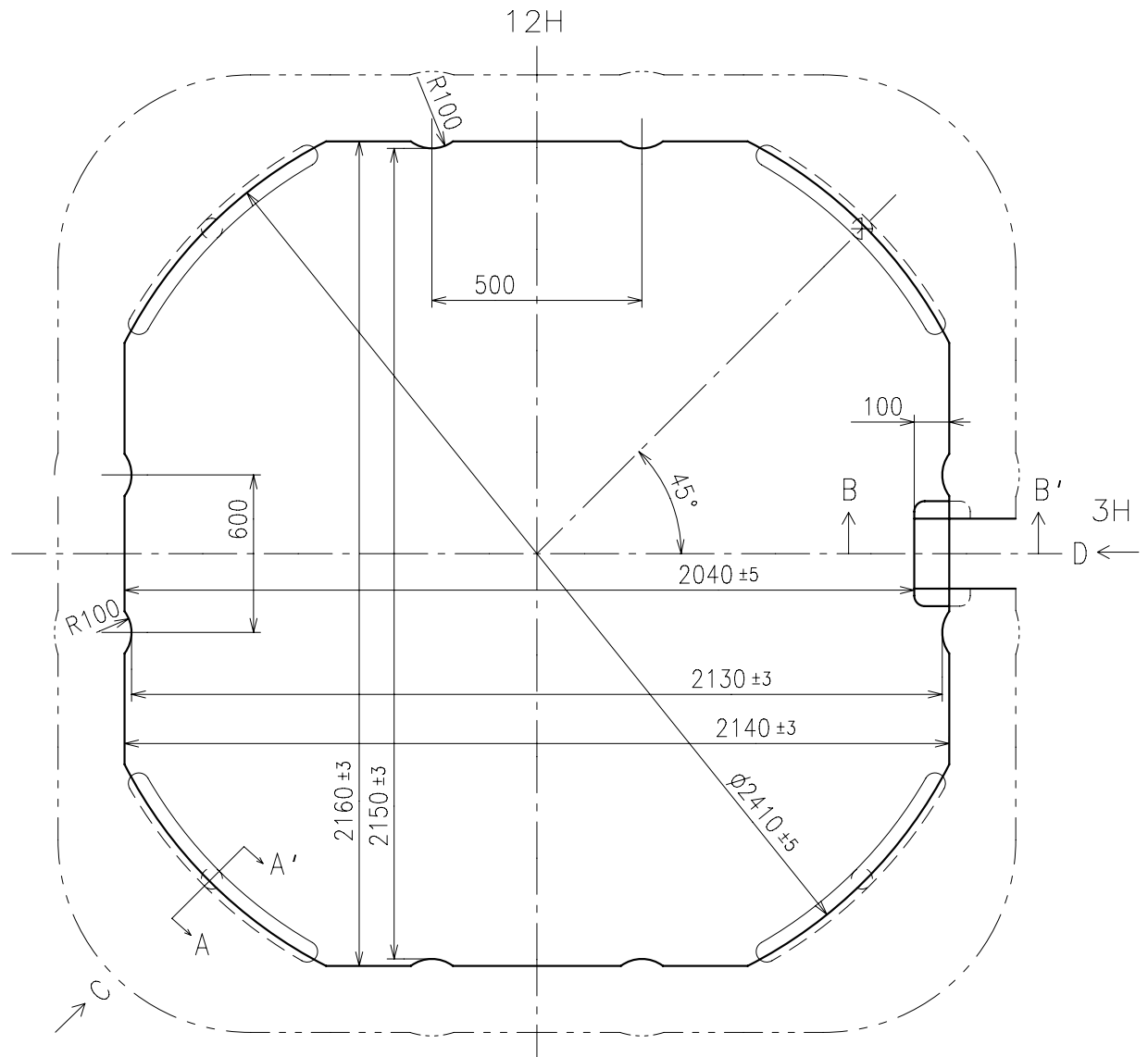


※ Not threaded

	Part No.	S1	S2	※ S3
Type-1 (Standard)	0351177	1366	1964	60
Type-2	0351578	2507	3105	650

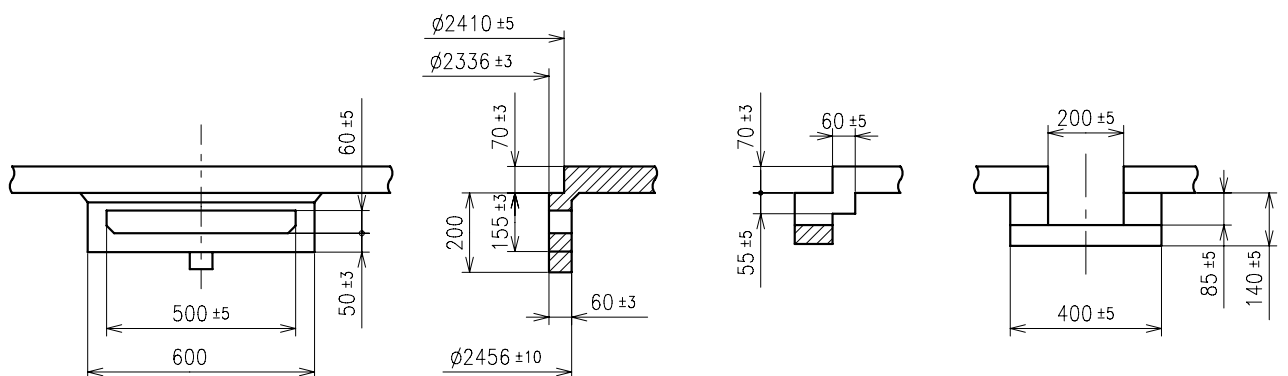
Material : Steel

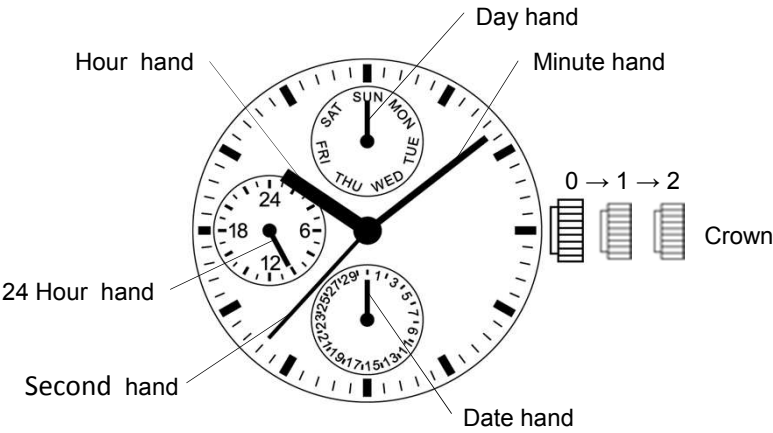
Hardness : Vickers 600±50

C view

A-A' section

B-B' section

D view



Crown position			
0 click		1st click	2nd click
Crown	Free	Turn counterclockwise for date change	Time setting (Day change)