

## Watch Movement Specification and Drawing

### MULTI - FUNCTION

# Cal. VX3RE

Movement Size

10 1/2'''

Casing Diameter

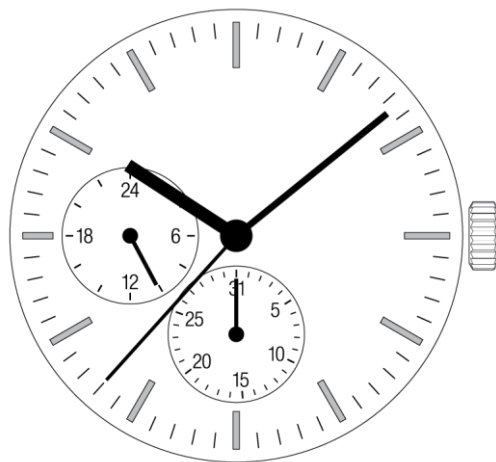
Ø 23.3mm

Height

3.05mm

Battery Life

3 years

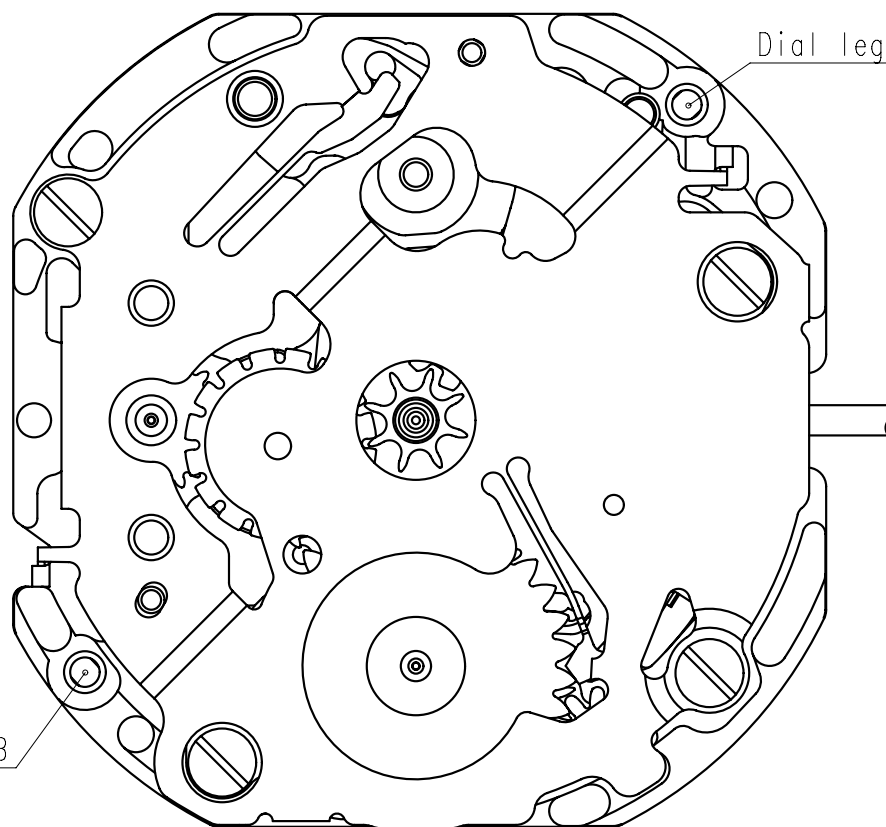
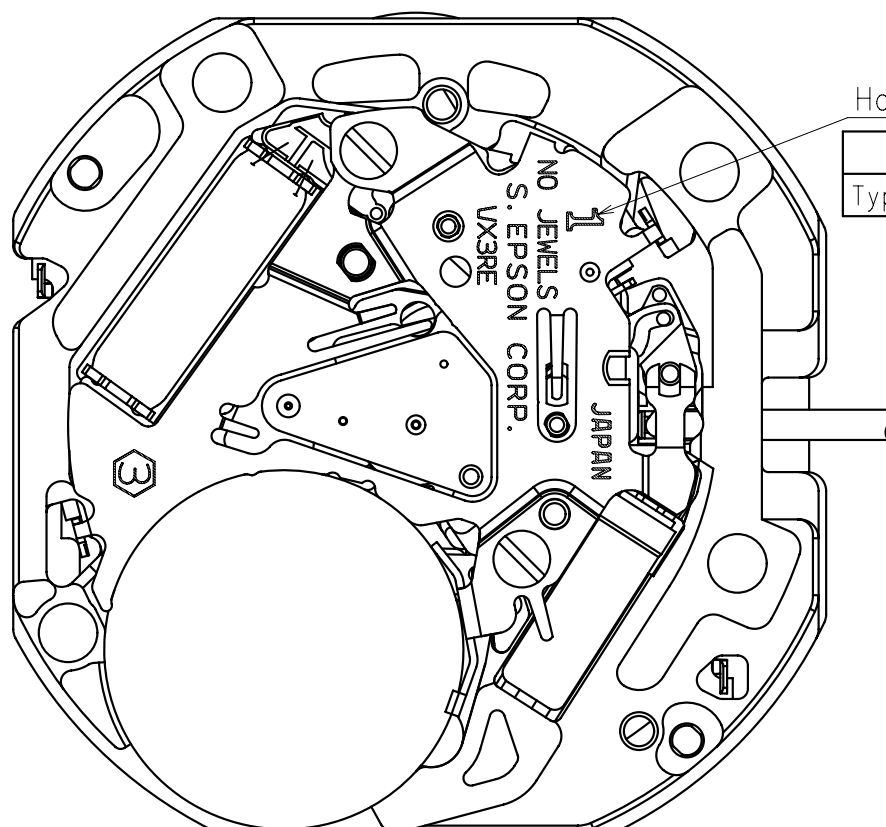


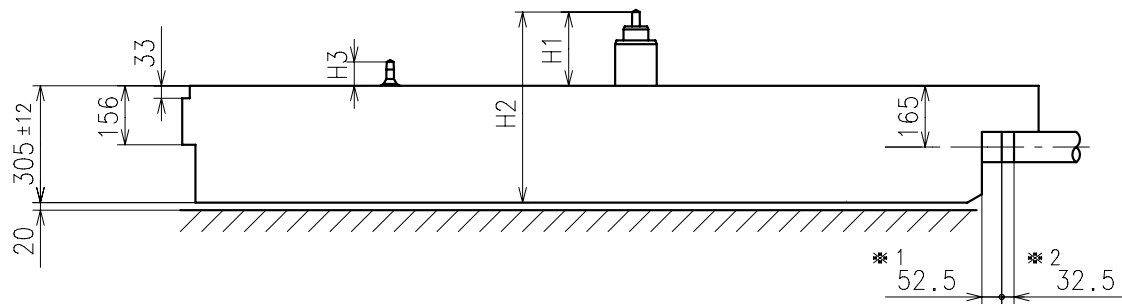
Date: 24/May/'22

# Cal. VX3RE

Items	Rev.	Page
Specifications	05	1
Appearance	04	2
Casing	06	3
Hand fitting	06	4
Hand setting stem	03	5
Dial	01	6
Casing ring	01	7
Operation	00	8

Cal.	VX3RE	Specifications		Date : 18/Sep./'20
				Rev. : 05
Analog Quartz 10 1/2" Slim Movement / 3 hands (H/M/S) and 2 eyes with Date / 24 Hour indicators				
1. MOVEMENT DIMENSIONS				
Outside diameter		φ 24.00mm × 21.50mm(3-9H) × 21.65mm(12-6H)		
Casing diameter		φ 23.30mm × 21.30mm(3-9H) × 21.50mm(12-6H)		
Total height		3.05mm (including battery)		
2. TIME STANDARD				
Type of quartz oscillator		Tuning fork		
Frequency of quartz oscillator		32,768 Hz		
Accuracy		±20 seconds per month (on wrist)		
Operating temperature range		−5°C to +50°C		
Regulation device		Nil (Pre-adjusted)		
3. INDICATOR / FUNCTIONS				
3 Hands		Hour / Minute / Second		
2 Small hands		Date (6H) / 24 Hour (9H)		
Reset switch				
Setting mechanism		Crown at normal position	: Free	
		Crown pulled out 1st click	: Instant date change	
		Crown pulled out 2nd click	: Time setting / Reset	
4. FEATURES				
Jewels		0 Jewels		
Anti-magnetism		Over 1600A/m (Direct current magnetic field)		
Maximum unbalance of hands		Second hand	: 0.07 μ N•m	
		Minute hand	: 0.6 μ N•m	
		Hour hand	: 0.5 μ N•m	
5. BATTERY				
Type / Size		Silver oxide battery / φ 9.5mm × t 2.0mm		
Recommended battery		SR920SW (Maxell, Murata, Seizaiken)		
Nominal voltage		1.55 V		
Battery life		Approx. 3 years		
Driving current consumption		Approx. 1.6 μ A		
Operation stopping voltage		1.1 V		
6. SEPARATED PARTS (Parts code)				
Hand setting stem		0351177 or 0351578		
Battery		SR920SW		
7. TEST OF ACCURACY				
Equipment to be used		SEIKO quartz tester QT-99, Greiner quartz timer-C , Witschi Q-tester 4000		
Duration of measurement		10 seconds		
Microphone to be used		Electromagnetic detection type		
All specifications are subject to change without notice.				

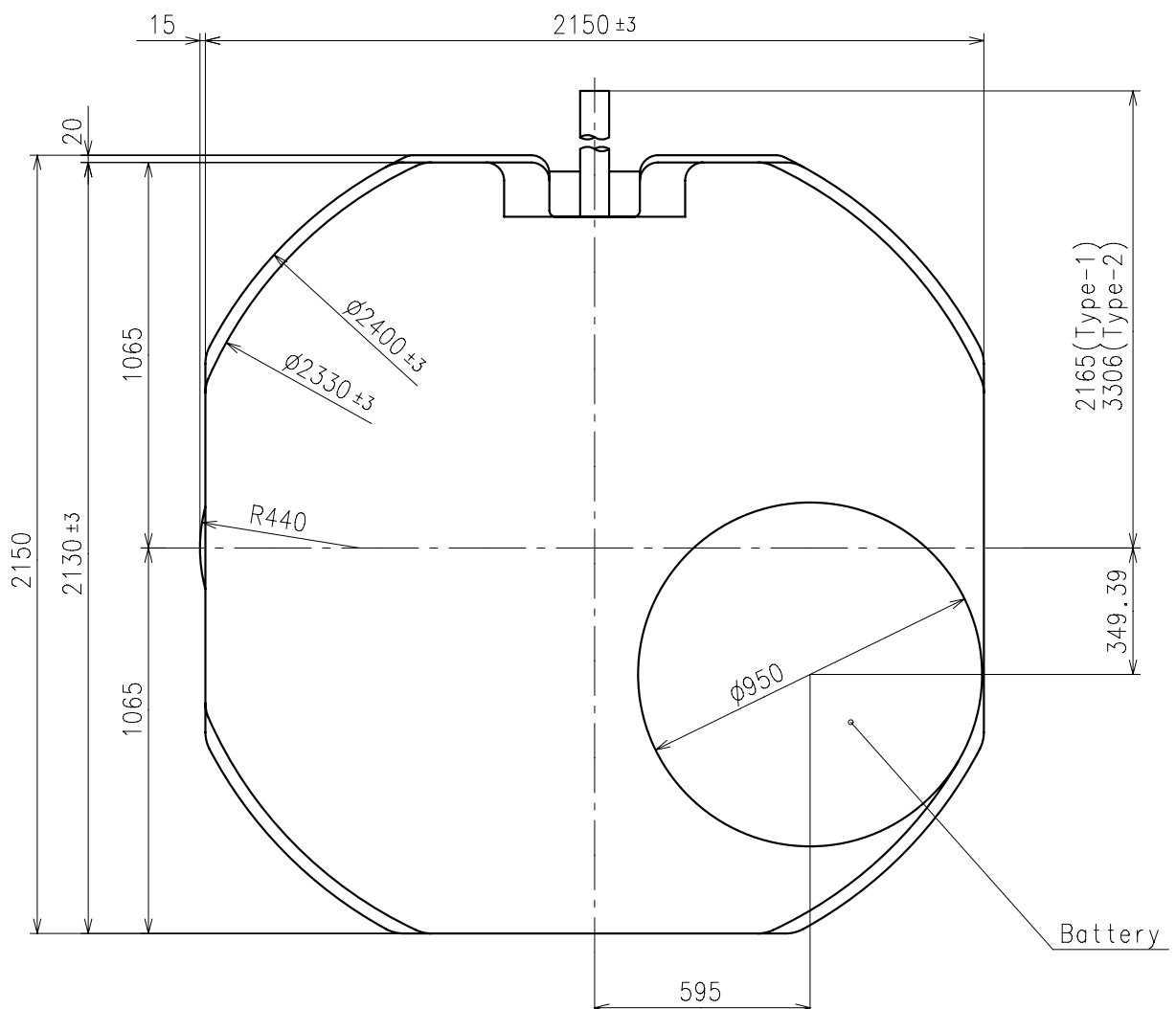




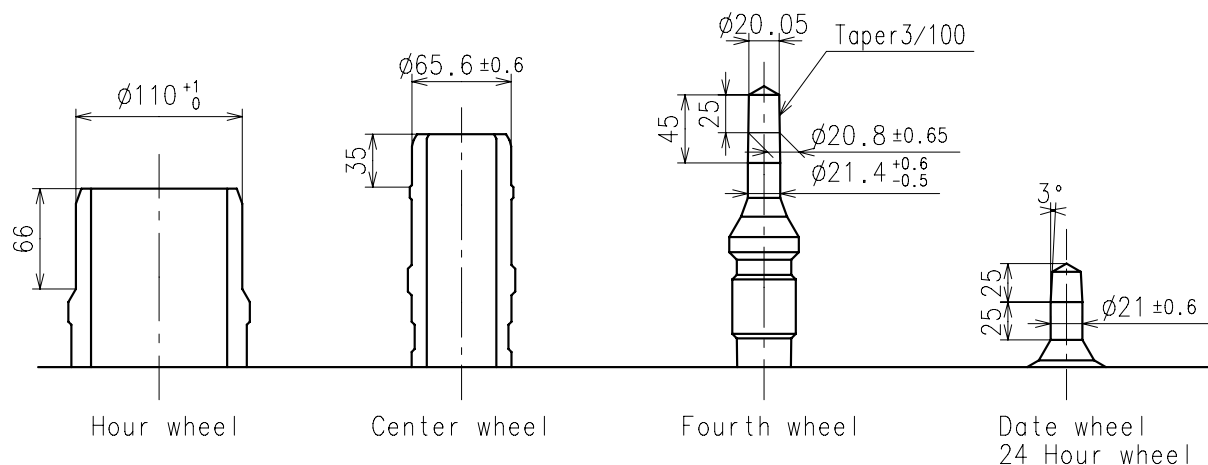
Center post		Type S (1) VX3RE1
Maximum height from dial support	H1	180
Total height including movement	H2	485
Maximum height from dial support	H3	63

\*1:First pullout stroke

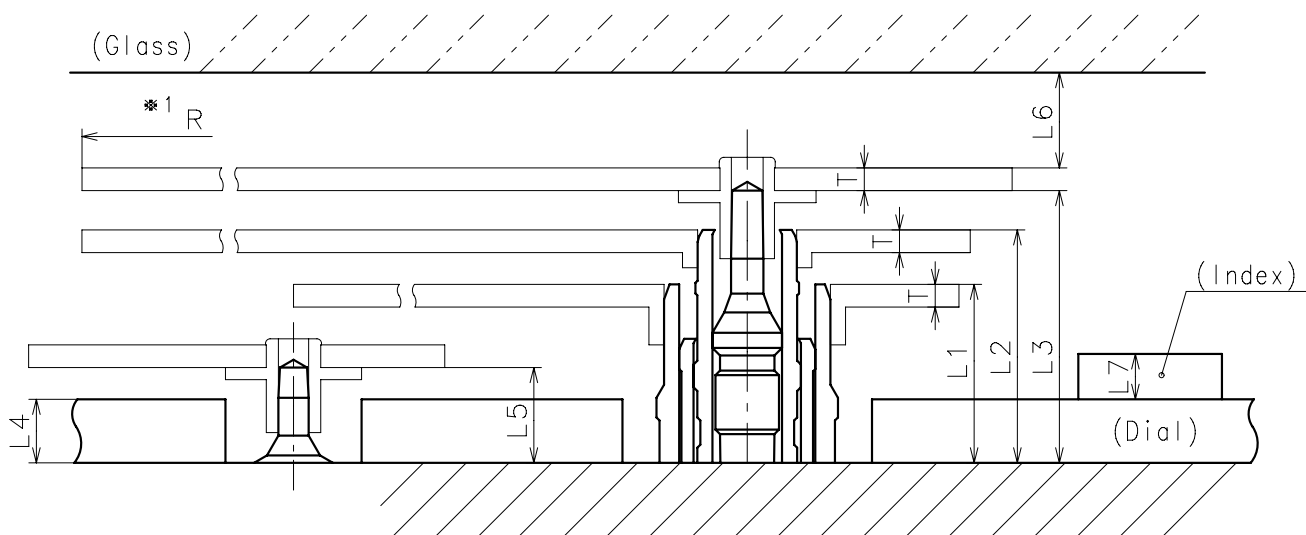
\*2:Second pullout stroke



- ※ Hour hand unbalance  $\leq 0.5\mu\text{ N}\cdot\text{m}$  ( $50\mu\text{ g}\cdot\text{m}$ )
- ※ Minute hand unbalance  $\leq 0.6\mu\text{ N}\cdot\text{m}$  ( $60\mu\text{ g}\cdot\text{m}$ )
- ※ Second hand unbalance  $\leq 0.07\mu\text{ N}\cdot\text{m}$  ( $7\mu\text{ g}\cdot\text{m}$ )

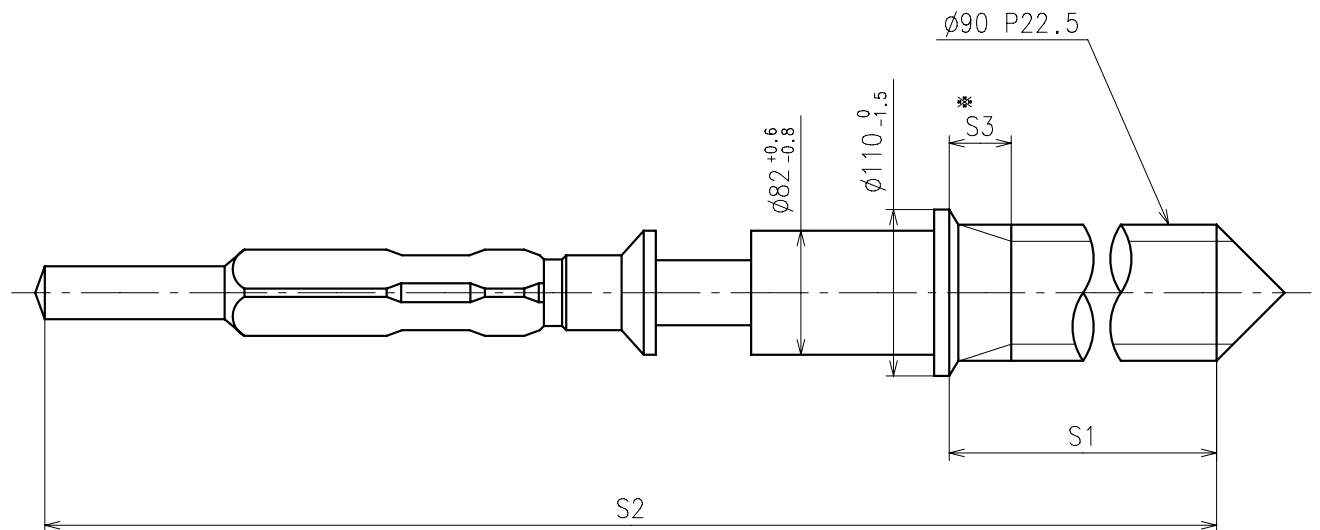


	Parts No.				
	Hour wheel	Center wheel	Fourth wheel	Date wheel	24 Hour wheel
Type S (1) VX3RE1	0271563	0221575	0241528	0970538	1002503



	L1	L2	L3	L4	L5	L6	L7	T	*1 R
Type S (1) VX3RE1	118	154	180	40	63	MIN: 50	MAX: 30	15	MAX: 1250

※ 1: It is the size taken into consideration for hands attachment.  
Please observe some standard value specified in unbalance when using long hands.

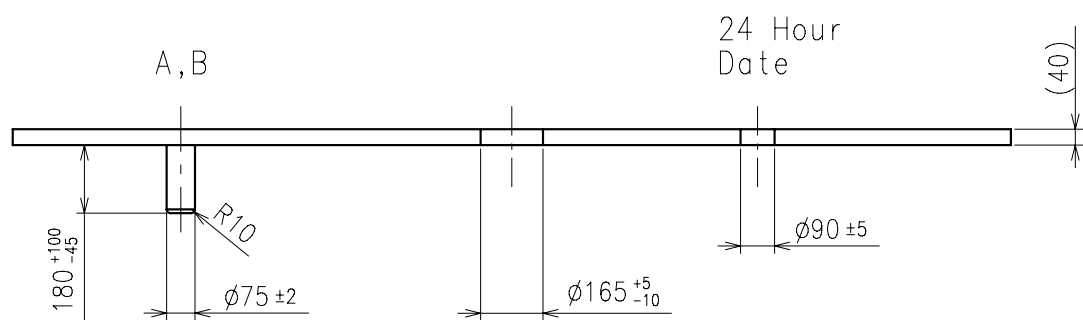
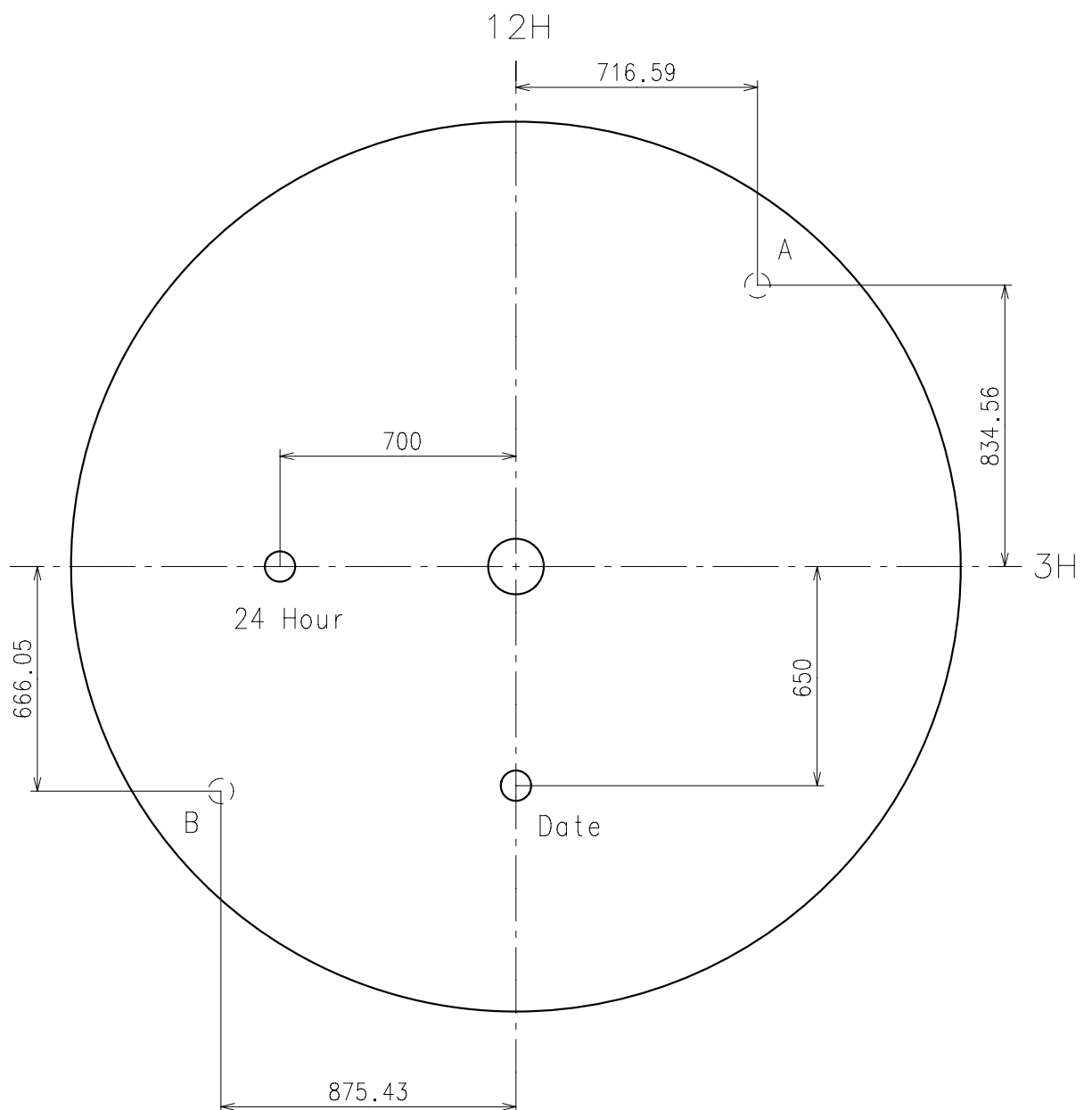


※ Not threaded

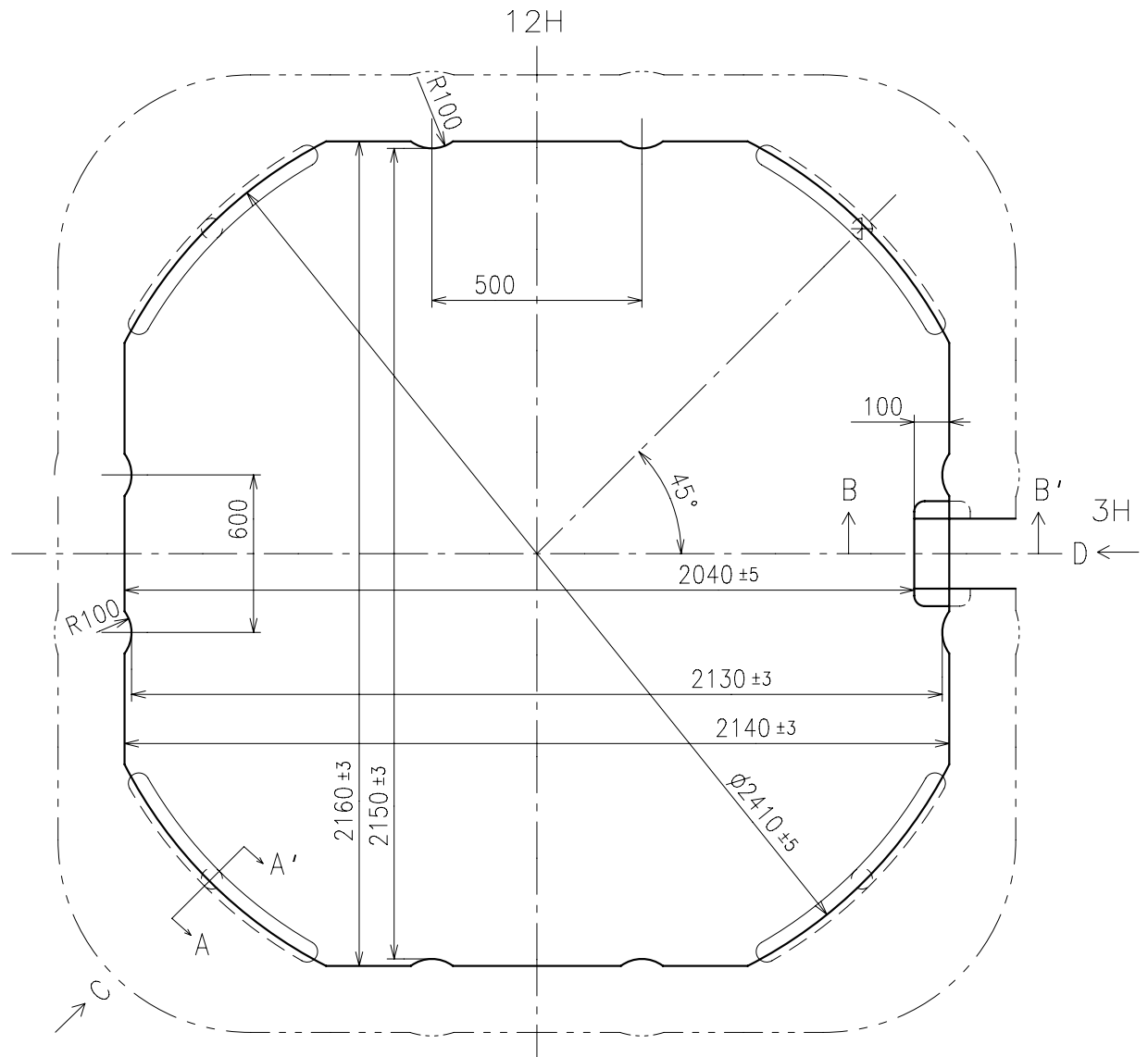
	Part No.	S1	S2	※ S3
Type-1 (Standard)	0351177	1366	1964	60
Type-2	0351578	2507	3105	650

Material : Steel

Hardness : Vickers 600±50





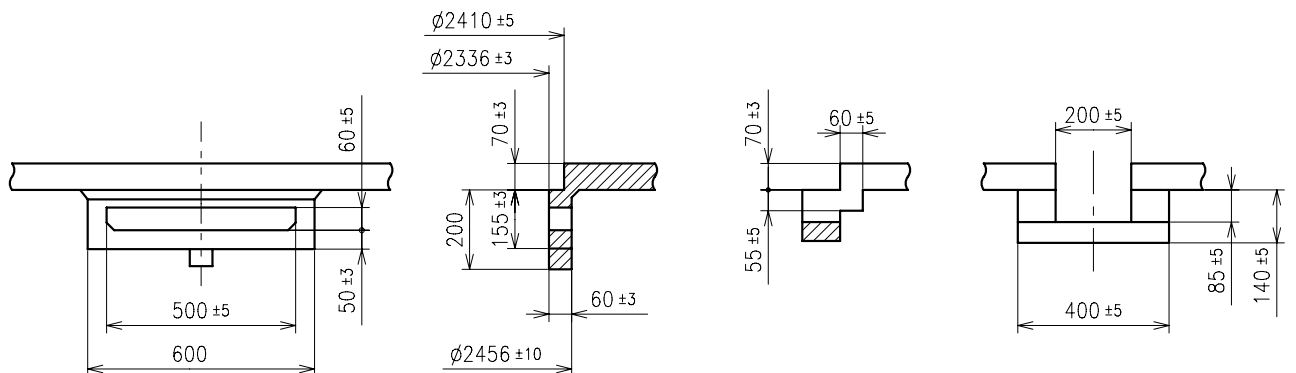


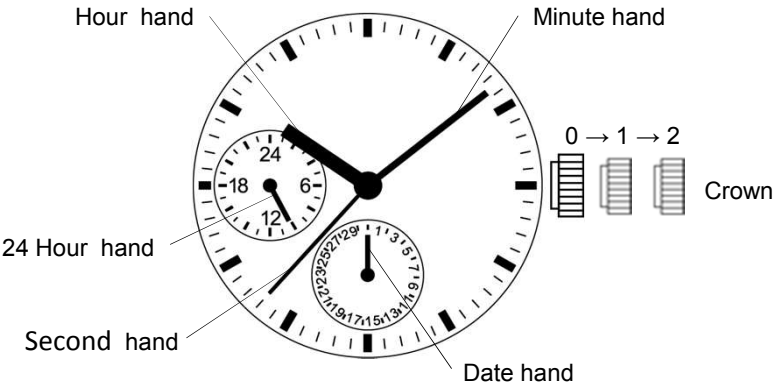
C view

A-A' section

B-B' section

D view





Crown position			
0 click		1st click	2nd click
Crown	Free	Turn counterclockwise for date change	Time setting (Day change)