

Watch Movement Specification and Drawing

SOLAR SERIES

Cal. AS01A

Movement Size

6 3/4 × 8'''

Casing Diameter

15.3 × 17.8 mm

Height

3.45mm

Running Time

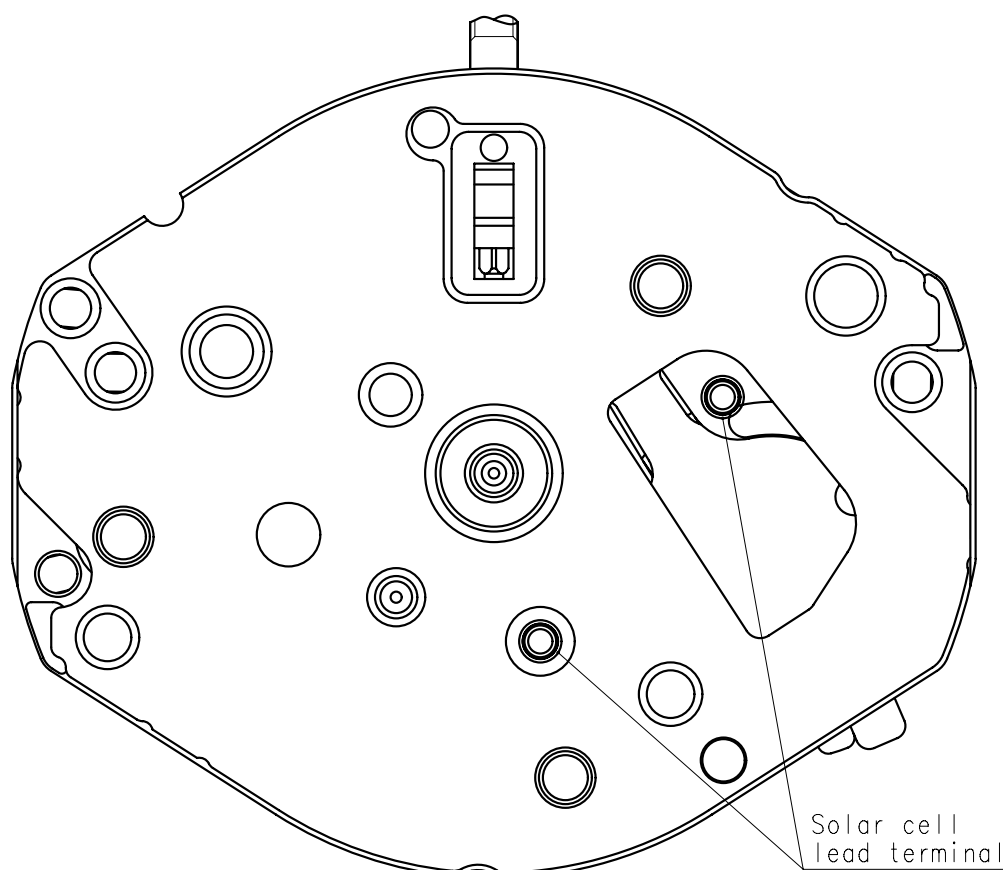
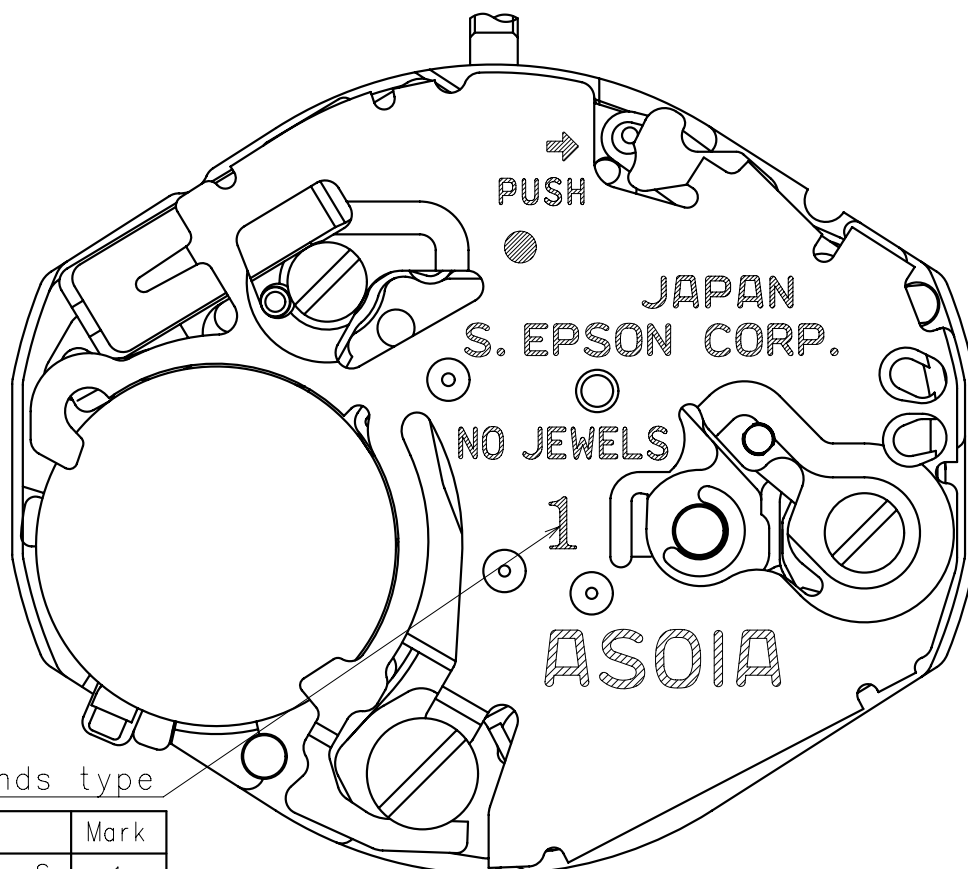
Approx. 4 months

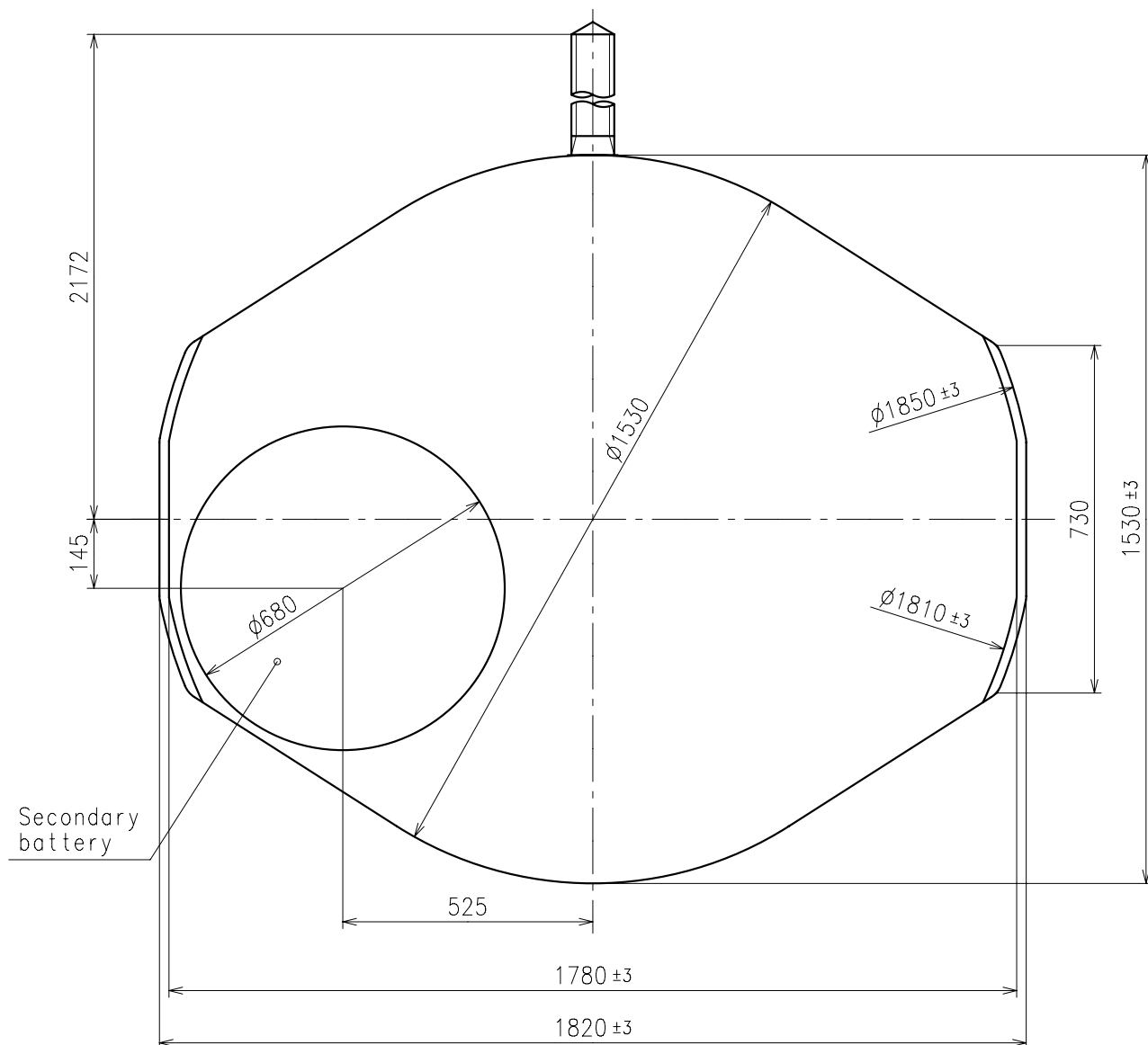
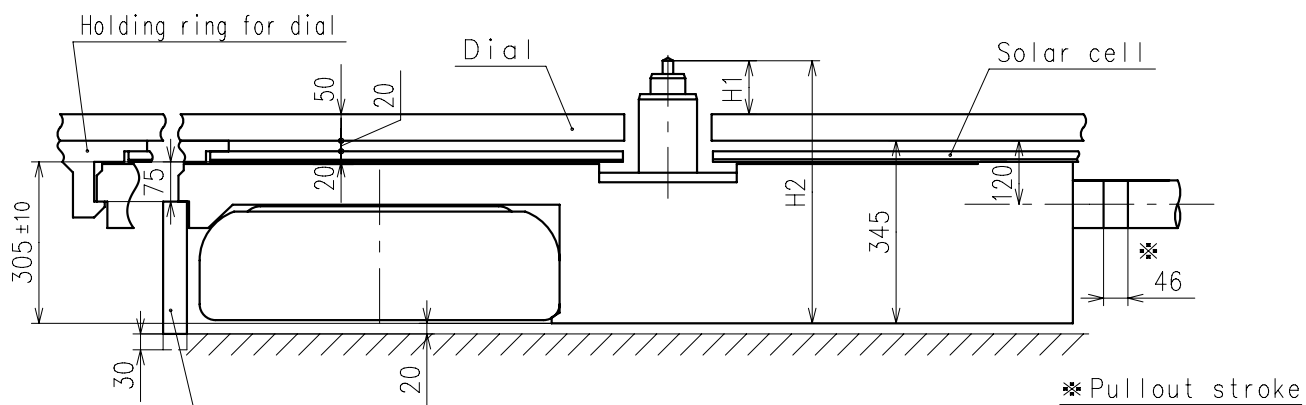


Date: 21/May/'21

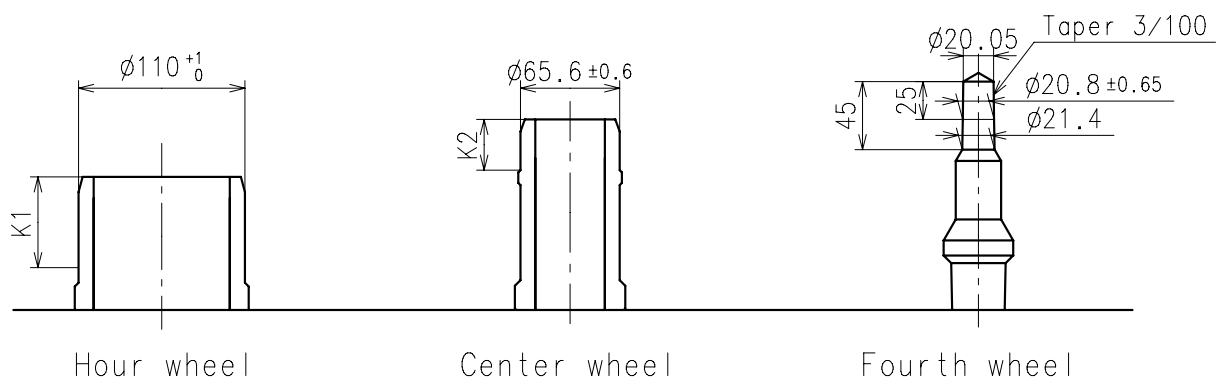
Cal. AS01A

Items	Rev.	Page
Features	01	1
Specifications	02	2
Appearance	02	3
Casing	01	4
Hand fitting	03	5
Hand setting stem	02	6
Dial-01	02	7-01
Dial-02	02	7-02
Dial-03	02	7-03
Casing ring	02	8
Solar cell unit-01	01	9-01
Solar cell unit-02	01	9-02
Solar cell unit-03	01	9-03
Attention-01	01	10-01
Attention-02	02	10-02
Attention-03	01	10-03

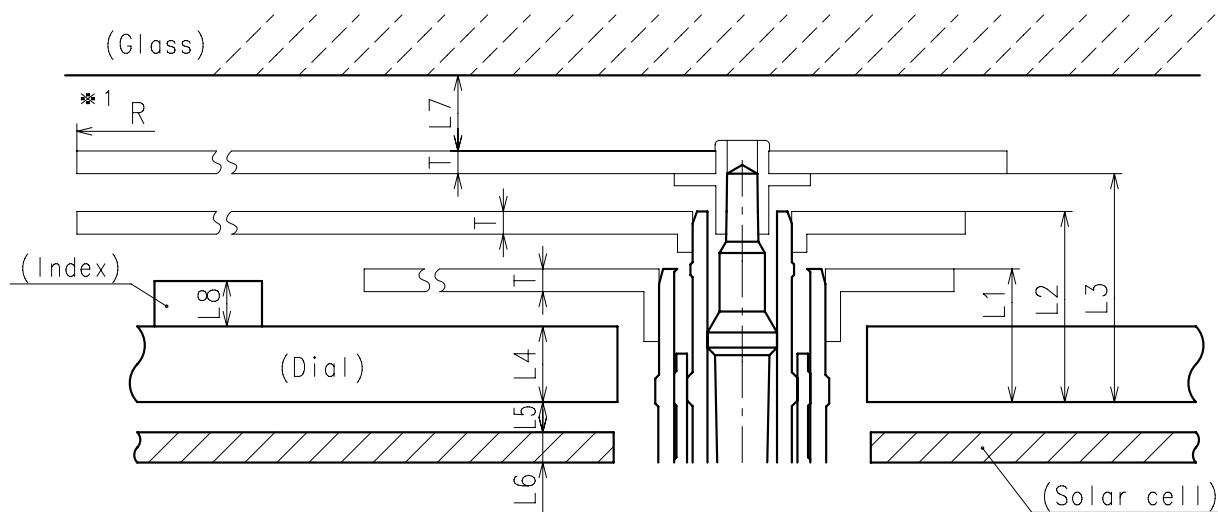




- ※ Unbalance
 - Hour hand $\leq 0.5\mu\text{ N}\cdot\text{m}$ ($50\mu\text{ g}\cdot\text{m}$)
 - Minute hand $\leq 0.6\mu\text{ N}\cdot\text{m}$ ($60\mu\text{ g}\cdot\text{m}$)
 - Second hand $\leq 0.06\mu\text{ N}\cdot\text{m}$ ($6\mu\text{ g}\cdot\text{m}$)
- ※ Moment of inertia
 - Second hand $\leq 0.11\mu\text{ g}\cdot\text{m}^2$

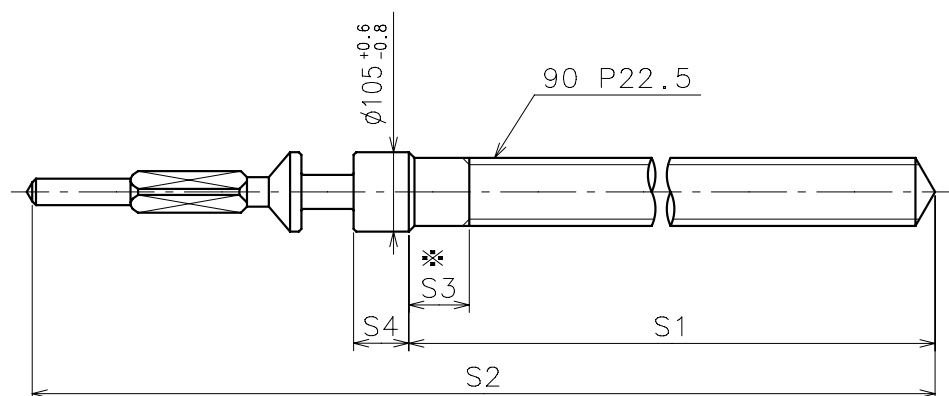


	Parts No.			Dimension	
	Hour wheel	Center wheel	Fourth wheel	K1	K2
Type S(1) AS01A**	0271764	0221764	0241764	52	33.5



	L1	L2	L3	L4	L5	L6	L7	L8	T	※1 R
Type S(1) AS01A**	88	126	151	50	20	20	MIN: 50	MAX: 30	15	MAX: 1250

※1: It is the size taken into consideration for hands attachment.
Please observe some standard value specified in unbalance and moment of inertia when using long hands.



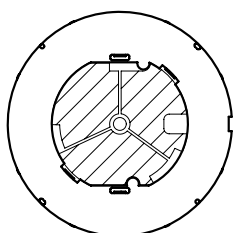
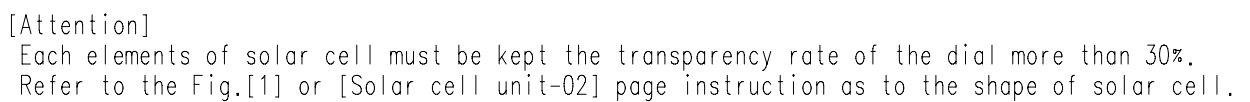
* Not threaded

	Part No.	S1	S2	* S3	S4
Standard	0354788	1473	1971	80	73

Material : Steel

Hardness : Vickers 530 ± 50





P. 7-02



Each elements of solar cell must be kept the transparency rate of the dial more than 30%. Refer to the Fig.[1] or [Solar cell unit-03] page instruction as to the shape of solar cell.

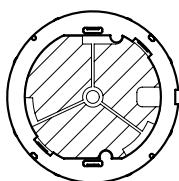
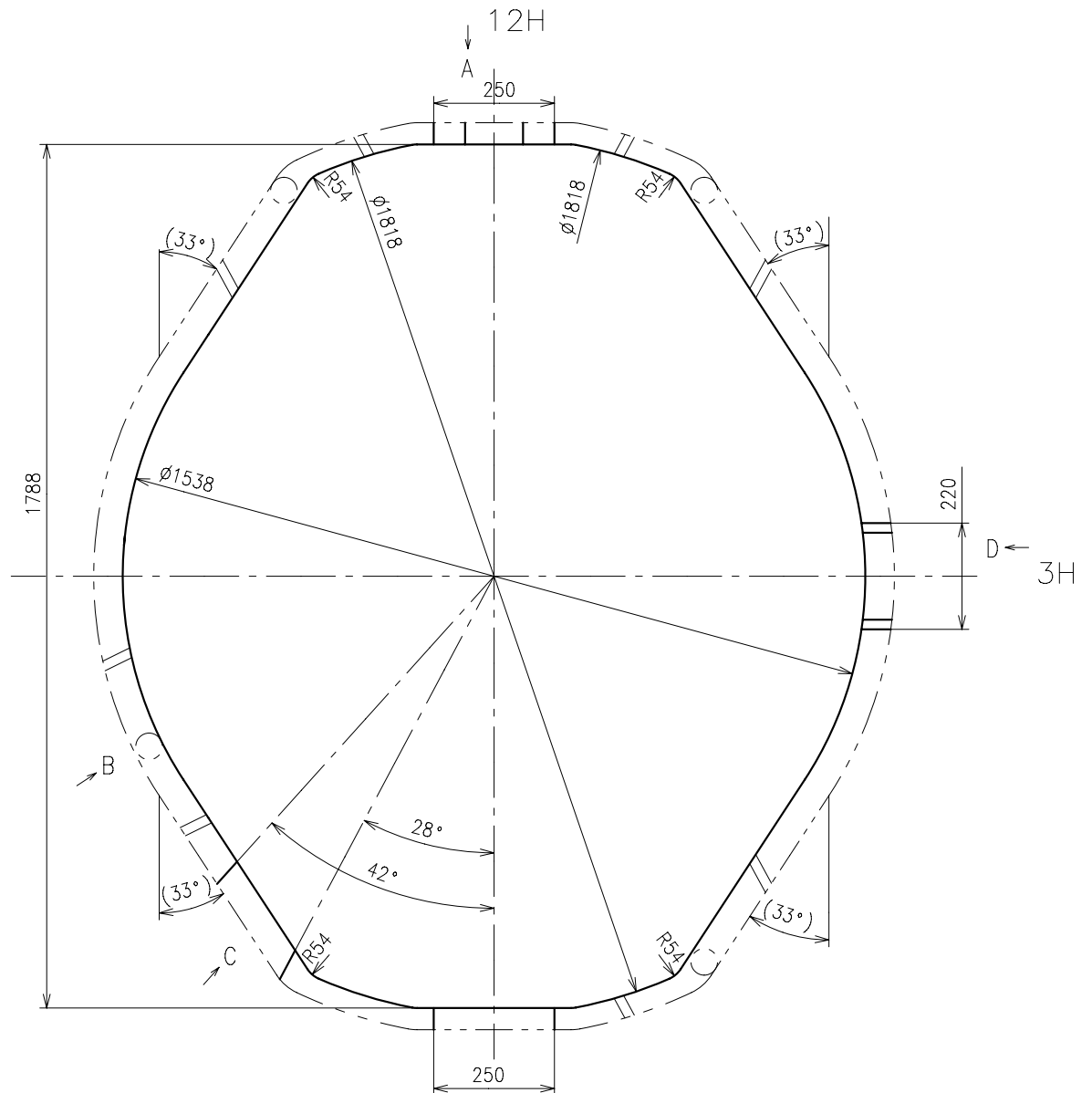
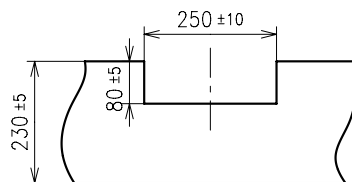


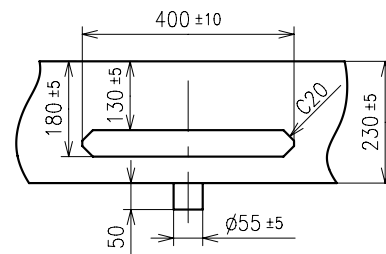
Fig.[1]  elements of solar cell



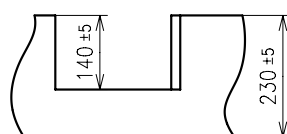
A view



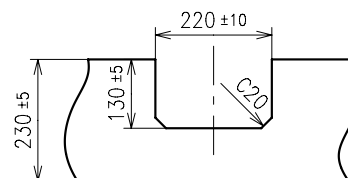
B view

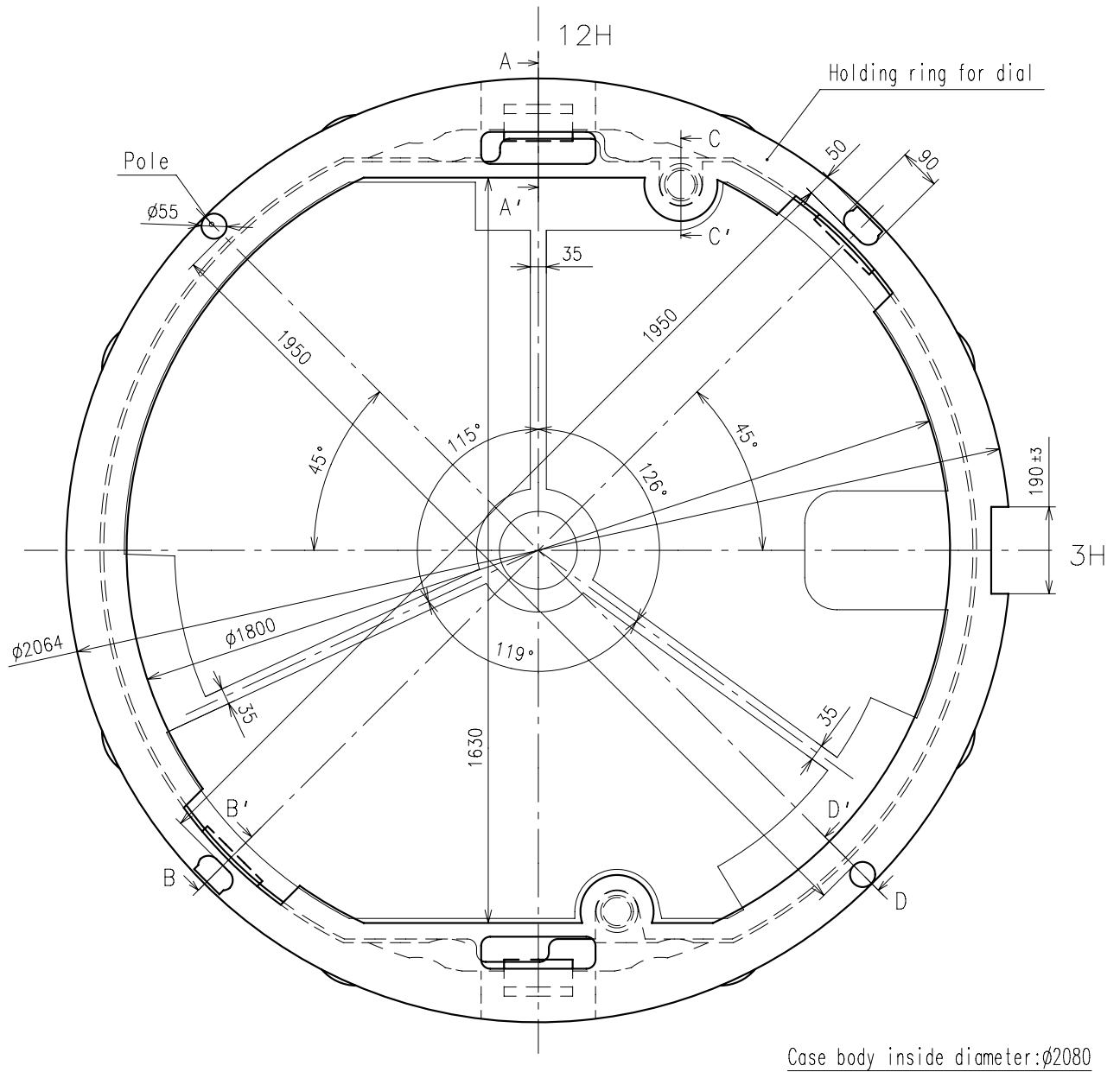


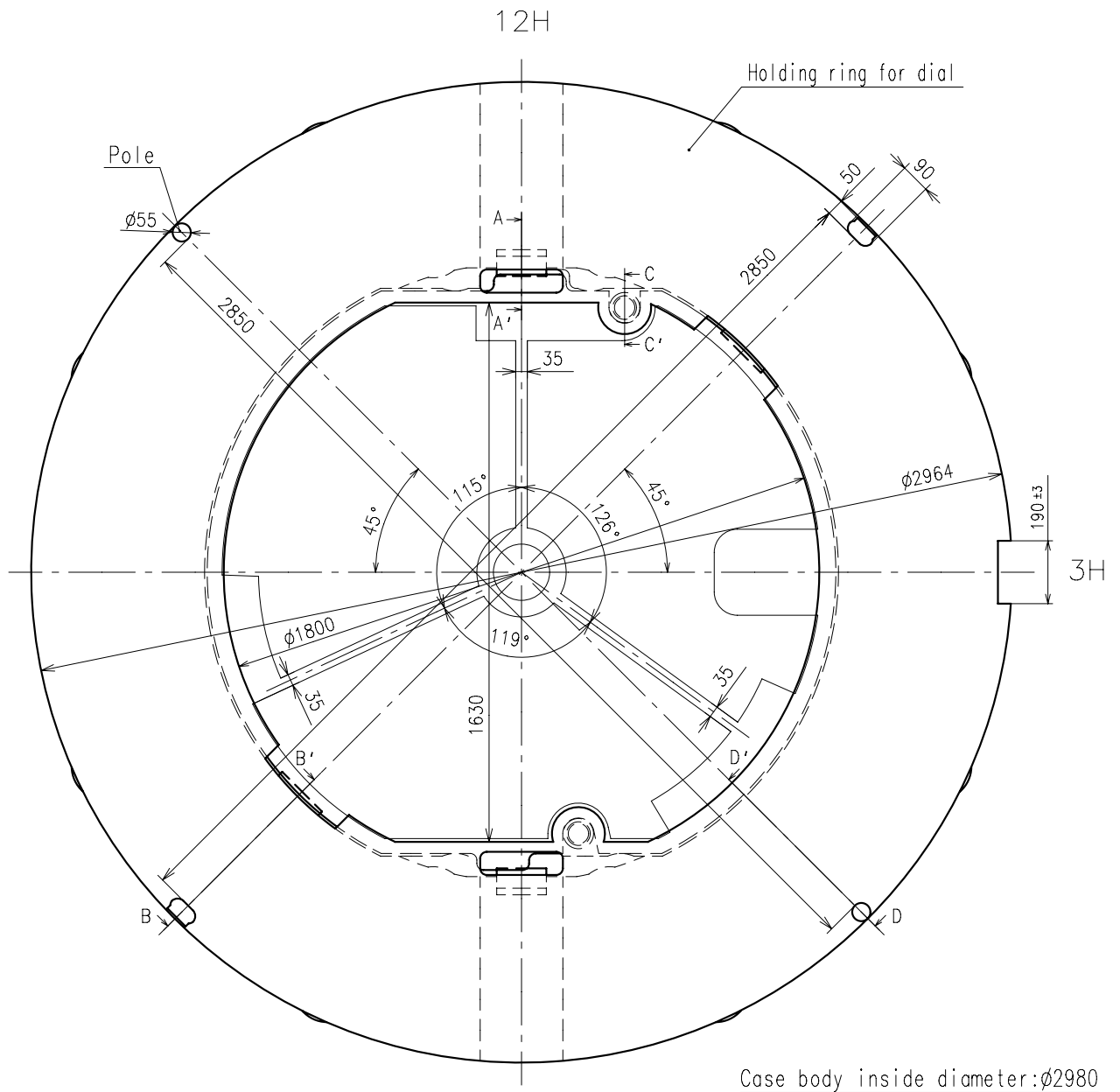
C view

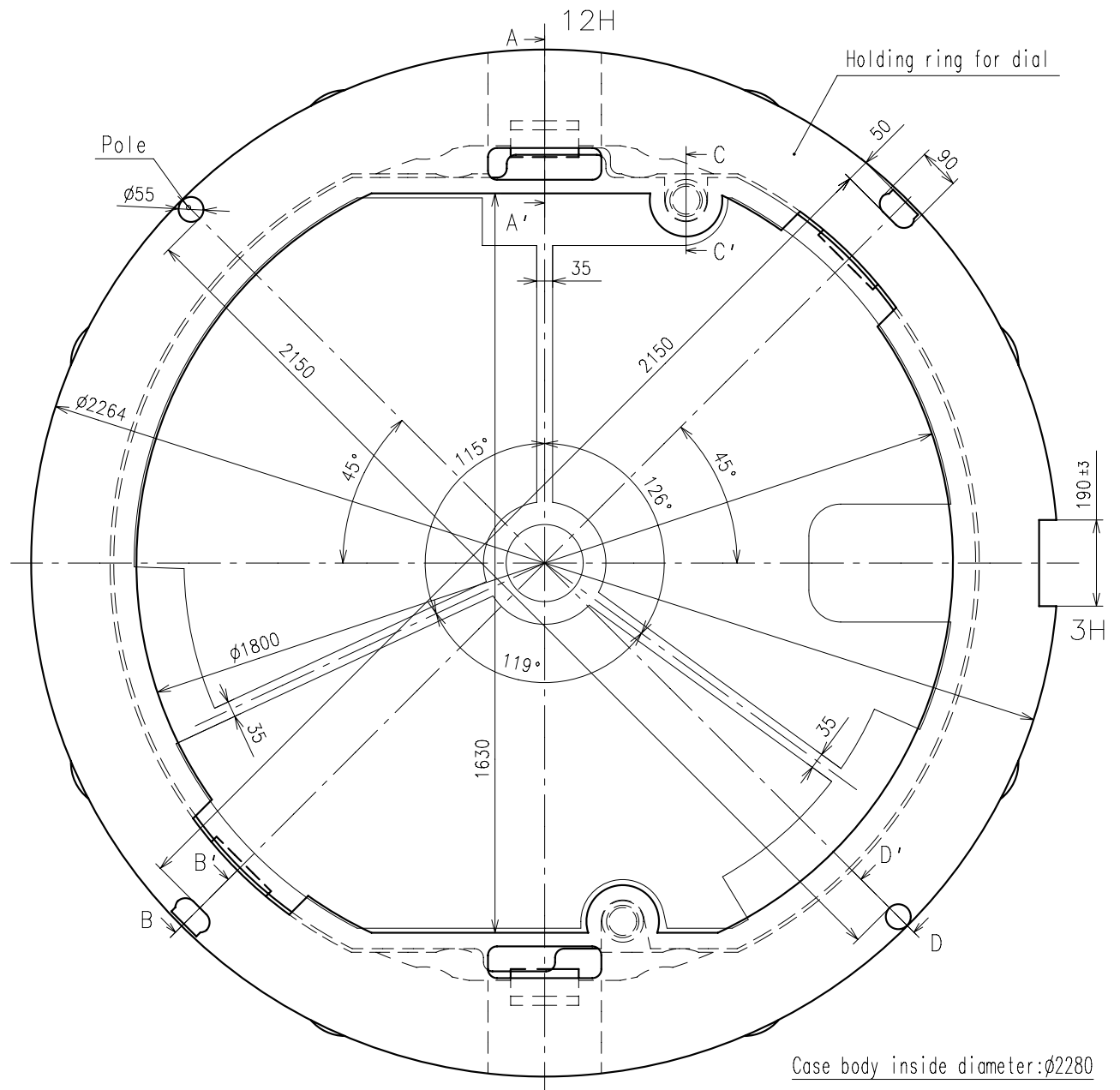


D view

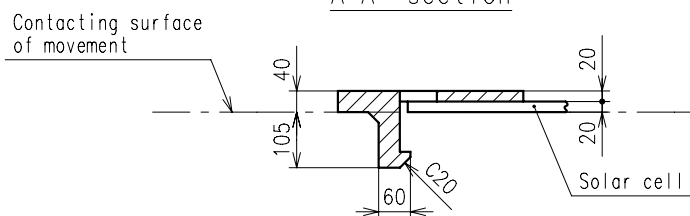




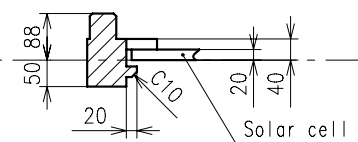




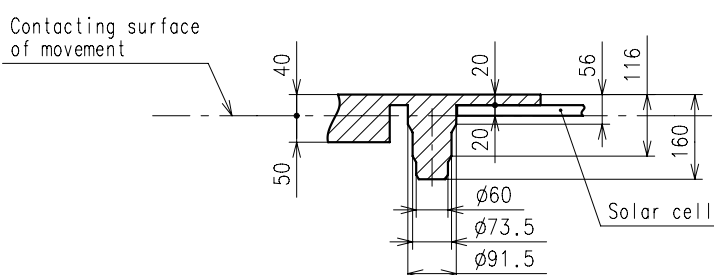
A-A' section



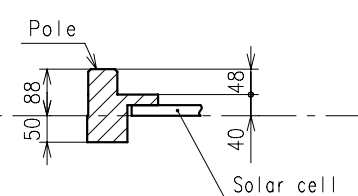
B-B' section



C-C' section



D-D' section



1. How to remove the setting stem

When removing the setting stem, put the setting stem at normal position and push the "setting lever" by tweezers. (Refer to the Fig.[0].)

The "setting lever" can not be push if the setting stem is not at normal position.

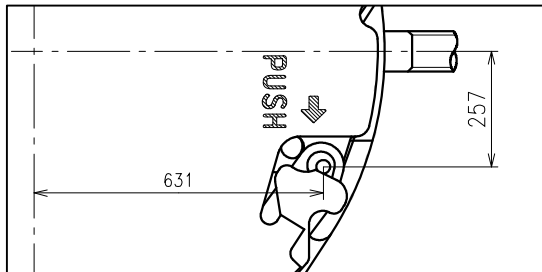


Fig.[0]

2. Attention for solar cell unit

Pay attention not to touch and scratch the surface of the solar cell.

3. Dial transparency rate

Keep the transparency rate of the dial more than 30%.

(Effective aperture is ϕ 19mm)

Each elements of solar cell must be kept the transparency rate.

4. The guideline of charging time is as in below

(Dial transparency rate = 30%)

Illumination (Lx)	Source of light	Environment	A (Approx. Hours)	B (Approx. Hours)	C (Approx. Minutes)
700	A fluorescent lamp	Inside the office	—	35	100
3,000		30W 20cm	60	4	25
10,000	Sun light	Cloudy	20	1.5	8
100,000		Fine weather	5	15 minutes	2

Condition A : Time required for full charge

Condition B : Time required for steady operation

Condition C : Time to charge 1 day of power

5. Caution

When charging the watch, do not place it too close to fluorescent lamp or other light sources as the watch temperature will become extremely high, causing damage to the parts inside the watch.

6. Attention for the secondary battery unit

Please set the exclusive secondary battery unit.

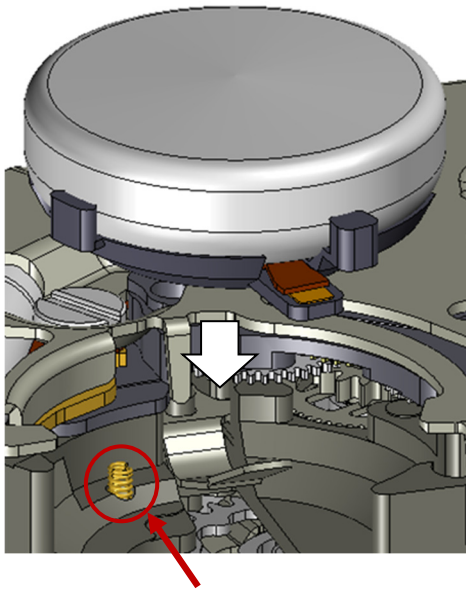
(The secondary battery is Lithium metal batteries without any environmentally harmful substances.)

If the silver oxide battery is accidentally set and charged, there is a possibility of battery explosion.

To prevent from the battery explosion, it is adopted safety structure not to charge the silver oxide battery even if it is accidentally set.

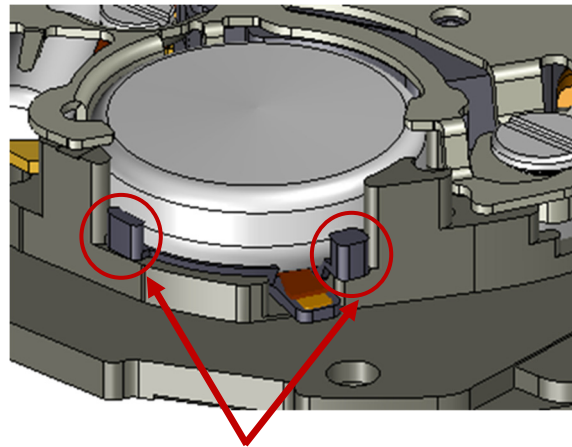
When the secondary battery is assembled, please match the phase in accordance with illustration and push the battery vertical direction. (Refer to the Fig.[1], [2] in below.)

Please pay attention not to bend the solar cell lead terminal.



Solar cell lead terminal

Fig.[1]



Setting position

Fig.[2]

When the secondary battery is disassembled, please broaden the spring of circuit block cover toward the (⇒) direction and remove the battery in accordance with illustration. (Refer to the Fig.[3] in below.)

Please refrain from touching the diode element on the back side of the secondary battery.

(Refer to the Fig.[4] in below.)

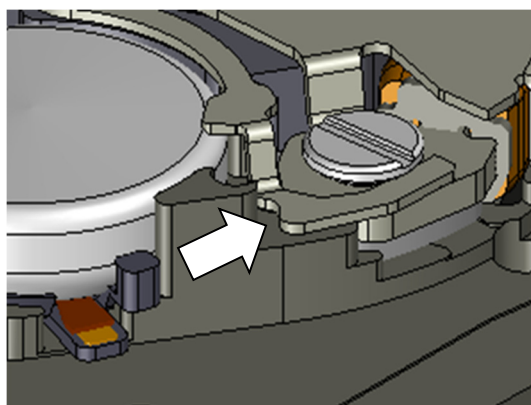


Fig.[3]

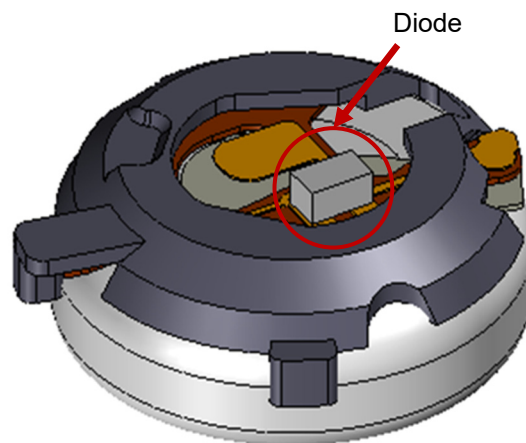
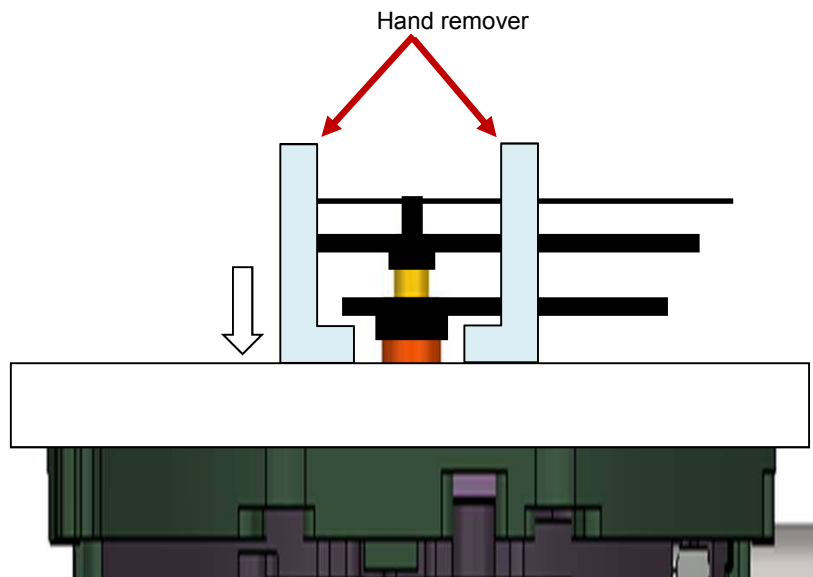


Fig.[4]

7.Attention for hands disassemble

When the hand is disassembled, please be sure to hold the dial.

If the hand is disassembled without holding the dial, it may have a possibility to break the movement.

**8. How to set the dial**

The dial is held by the four guide poles on the solar cell unit.

