

Watch Movement Specification and Drawing

SOLAR SERIES

Cal. VS75B

Movement Size

12'''

Casing Diameter

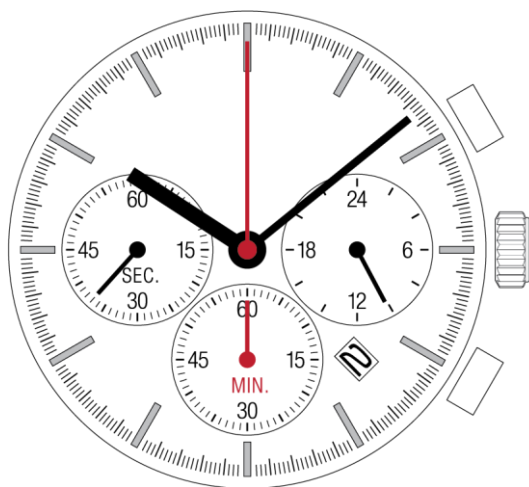
Ø 27.0mm

Height

4.40mm

Running Time

Approx. 6 months

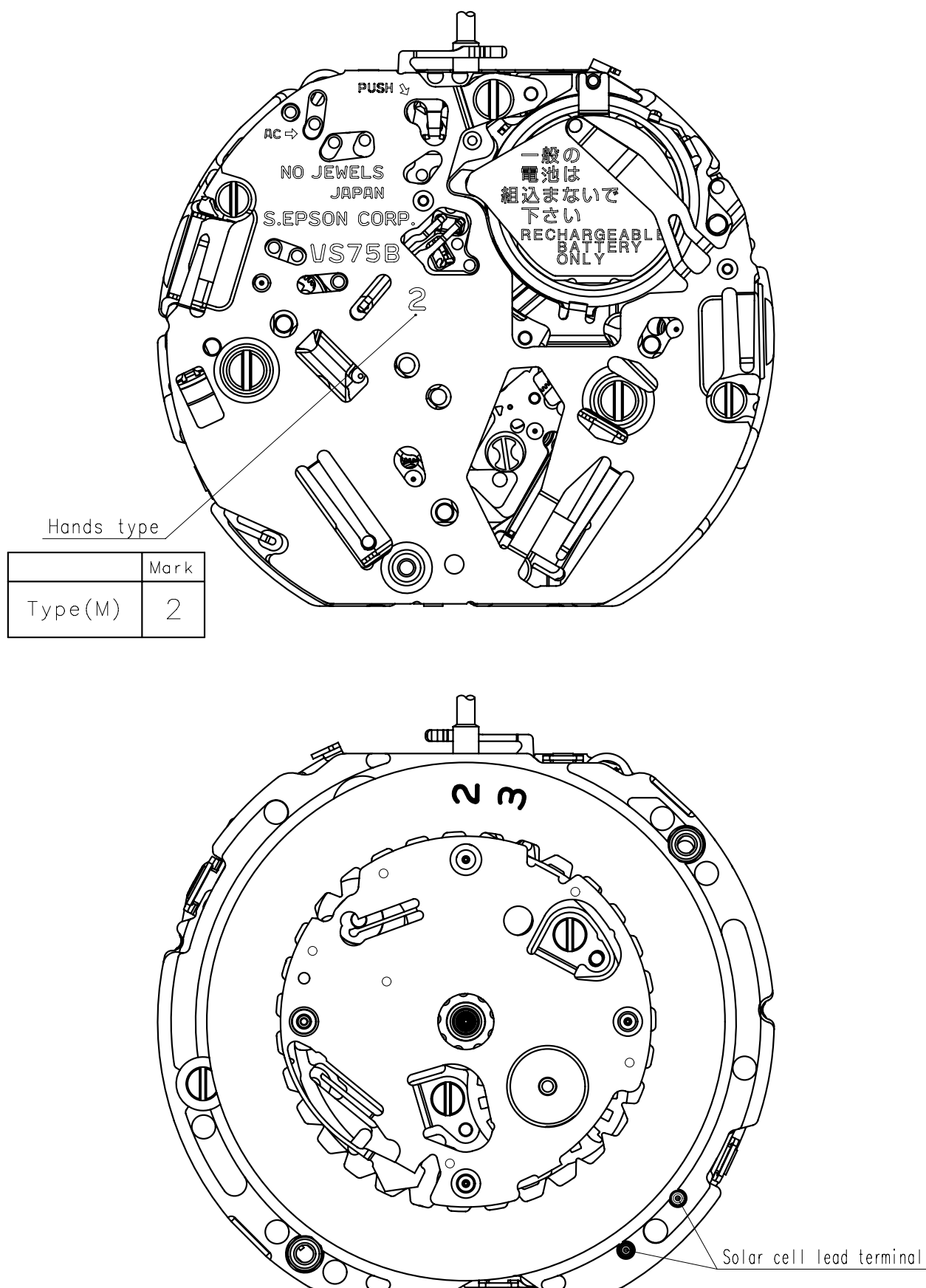


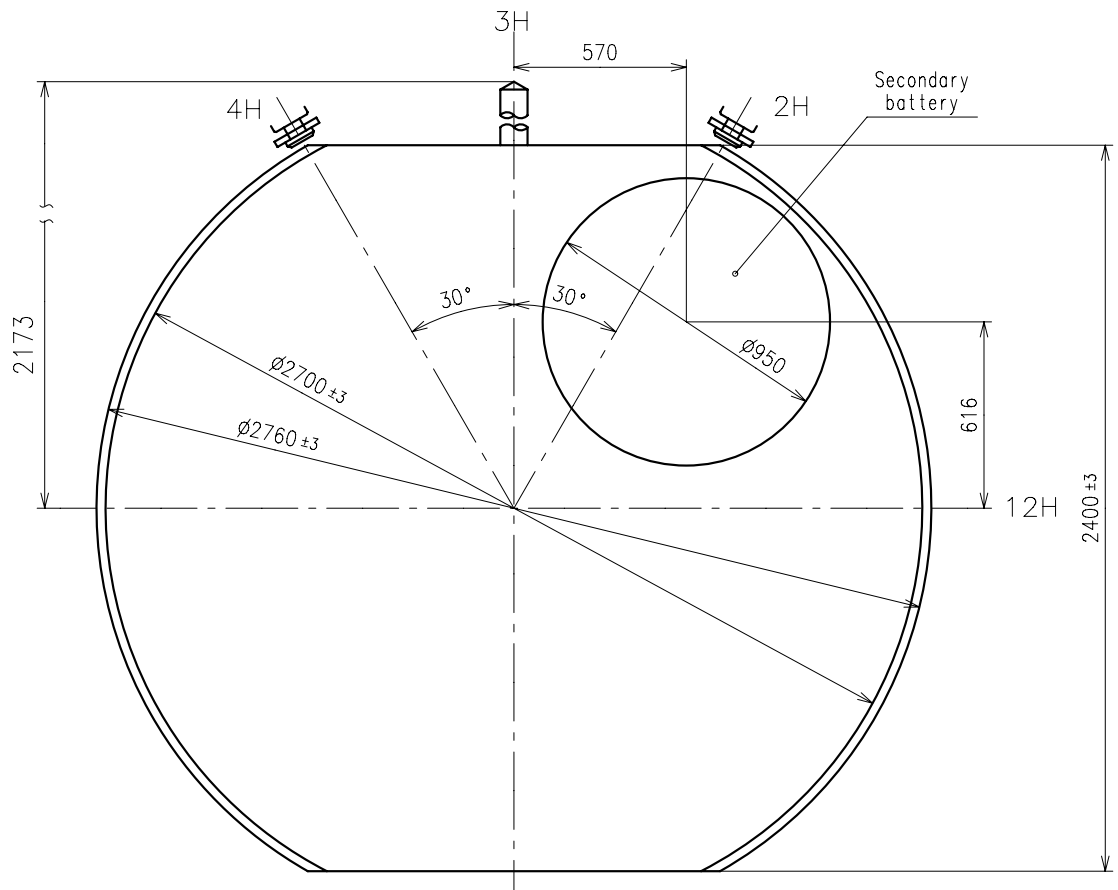
Date: 1/Dec./'23

Cal. VS75B

Items	Rev.	Page
Features	01	1
Specifications	02	2
Appearance	00	3
Casing	00	4
Hand fitting	01	5
Hand setting stem	00	6
Dial	01	7
Solar cell unit	01	8
Attention-01	03	9-01
Attention-02	01	9-02
Attention-03	01	9-03
Operation-01	00	10-01
Operation-02	00	10-02

Cal.	VS75B	Specifications	Date : 4/Aug./23
			Rev. : 02
Solar Analog Quartz 12''' Center Second Chronograph Movement			
1. MOVEMENT DIMENSIONS			
Outside diameter	φ 27.60mm(12H-6H) × 24.00mm(3H-9H)		
Casing diameter	φ 27.00mm(12H-6H)		
Total height	4.4mm		
2. TIME STANDARD			
Type of quartz oscillator	Tuning fork		
Frequency of quartz oscillator	32,768 Hz		
Accuracy	±20 seconds per month (on wrist)		
Operating temperature range	−5°C to +50°C		
Regulation device	Nil (Pre-adjusted)		
3. INDICATOR / FUNCTIONS			
3 Hands	Hour / Minute / 1/5 second chronograph (Center)		
Small hands	Small second (9H) / Minute chronograph (6H) / 24 Hour (3H)		
Calendar	Instant setting device for date calendar		
Reset switch			
Power depletion warning function (BLD)			
	(Second hand moves at 2-second intervals when voltage is 1.2V)		
Chronograph	The chronograph can measure up to 60 minutes in 1/5 second increments.		
Running time	Approx. 6 months (After fully charged)		
4. FEATURES			
Jewels	0 Jewels		
Anti-magnetism	Over 1600A/m (Direct current magnetic field)		
Driving current consumption	Approx. 0.65 μ A (1.35V , Chronograph non-operates)		
Operation stopping voltage	1.0V		
Solar cell type	Amorphous silicon solar cell		
Maximum unbalance of hands	Small second hand		: 0.03 μ N•m
	Minute chronograph hand		: 0.03 μ N•m
	24 huor hand		: 0.03 μ N•m
	1/5 second chronograph hand		: 0.09 μ N•m
	Minute hand		: 0.70 μ N•m
Moment of inertia	1/5 second chronograph hand		: less than 0.12 μ g•m²
5. SECONDARY BATTERY			
Type	Lithium metal batteries		
Size	φ 9.5 × t 2.05 mm		
Capacity	5.5mAh		
Nominal voltage	1.5V		
6. SEPARATED PARTS (Parts code)			
Hand setting stem	0351587		
Secondary battery unit	302334T		
Solar cell unit	4020552		
Solar cell lead terminal (2 pcs)	4281516		
Untransparent plate	4453500		
7. TEST OF ACCURACY			
Equipment to be used	SEIKO quartz tester QT-99 Greiner quartz timer-C , Witschi Q-tester 4000		
Duration of measurement	10 seconds		
Microphone to be used	Electromagnetic detection type		
All specifications are subject to change without notice.			



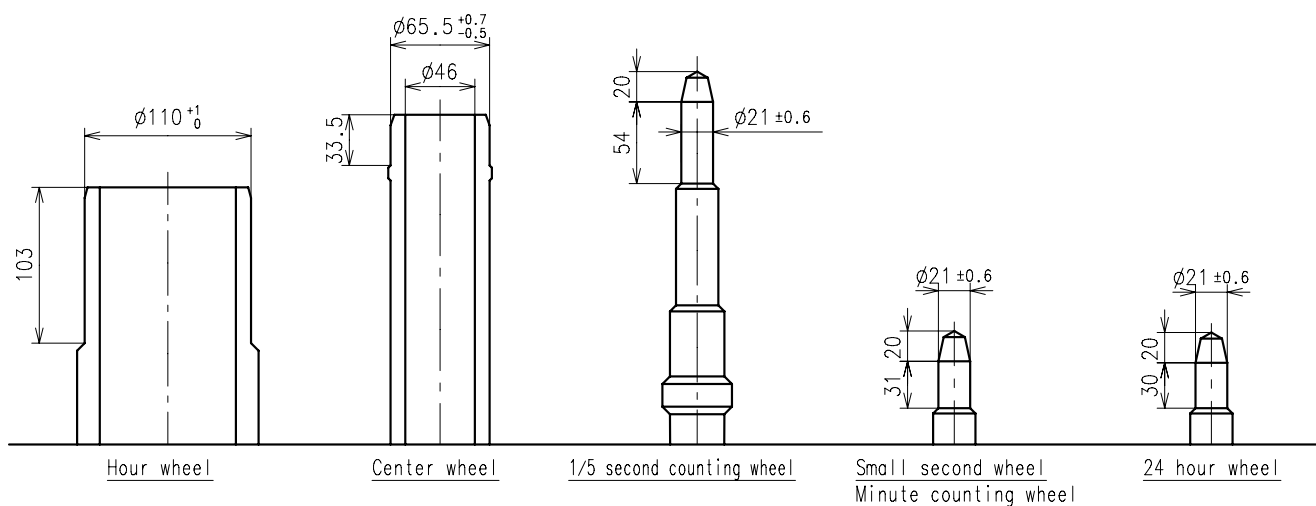


※ Unbalance

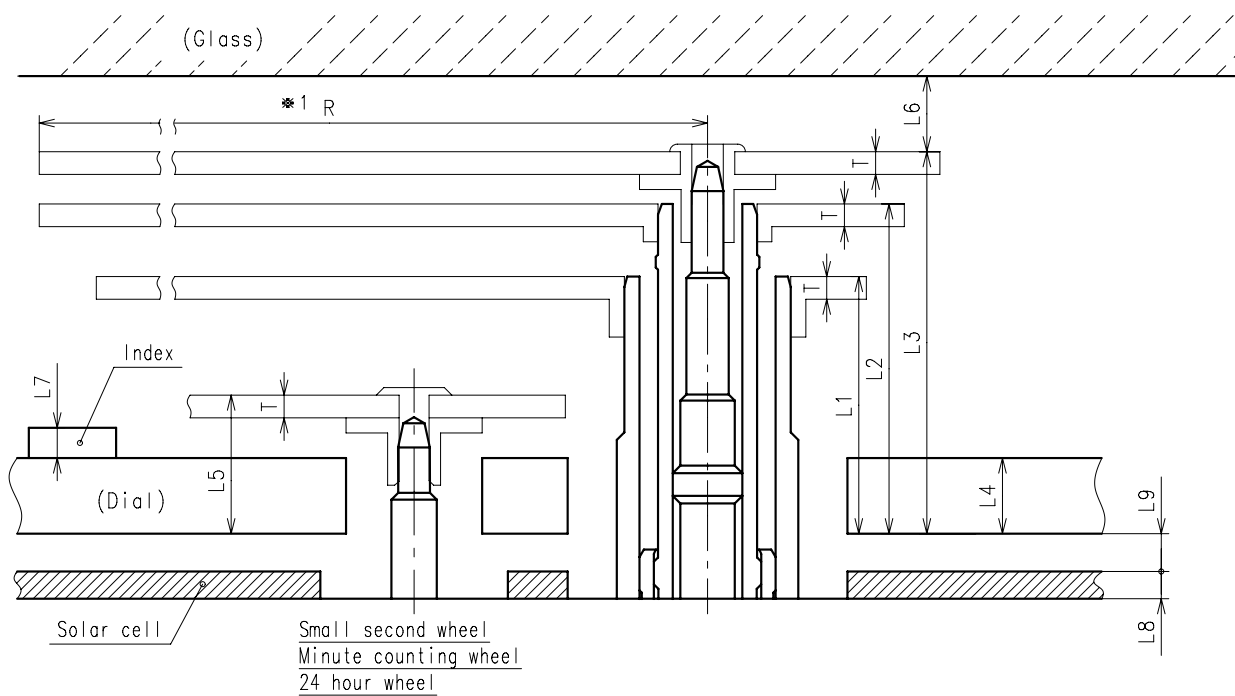
· Small second hand	$\leq 0.03\mu \text{ N} \cdot \text{m}$	$\left(3\mu \text{ g} \cdot \text{m} \right)$
· Minute chronograph hand	$\leq 0.03\mu \text{ N} \cdot \text{m}$	$\left(3\mu \text{ g} \cdot \text{m} \right)$
· 1/5 second chronograph hand	$\leq 0.09\mu \text{ N} \cdot \text{m}$	$\left(9\mu \text{ g} \cdot \text{m} \right)$
· Minute hand	$\leq 0.70\mu \text{ N} \cdot \text{m}$	$\left(70\mu \text{ g} \cdot \text{m} \right)$
· 24 hour hand	$\leq 0.03\mu \text{ N} \cdot \text{m}$	$\left(3\mu \text{ g} \cdot \text{m} \right)$

※ Moment of inertia

· 1/5 second chronograph hand	$\leq 0.12\mu \text{ g} \cdot \text{m}^2$
-------------------------------	---



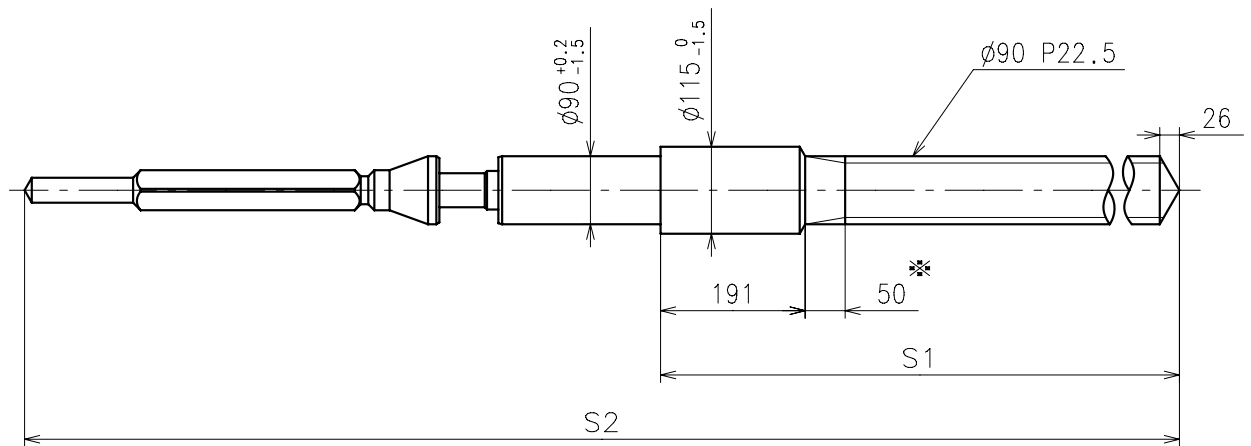
	Parts No.					
	Hour wheel	Center wheel	1/5 second counting wheel	Small second wheel	Minute counting wheel	24 hour wheel
Type M (2) VS75B**	0271636	0221604	0888501	0240511	0902500	1002534



	L1	L2	L3	L4	L5	L6	L7	L8	L9	T	*1 R
Type M (2) VS75B**	178	226	261	50	90	MIN: 50	MAX: 50	18	20	15	MAX: 1250

※1: It is the size taken into consideration for hands attachment.

Please observe some standard value specified in unbalance and moment of inertia when using long hands.

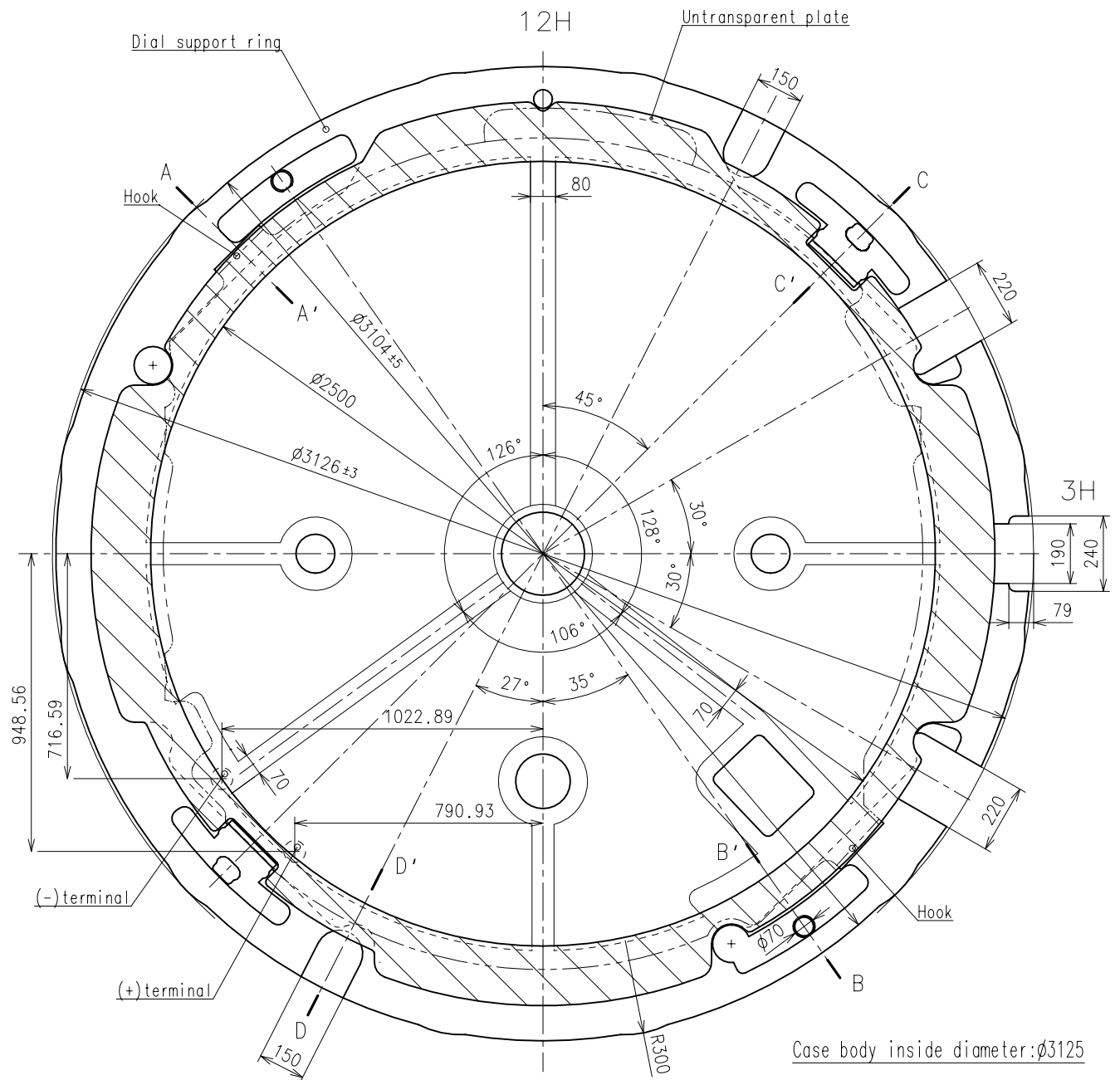


※ Not threaded

	Part No.	S1	S2
Standard	0351587	1367	2208

Material : Steel

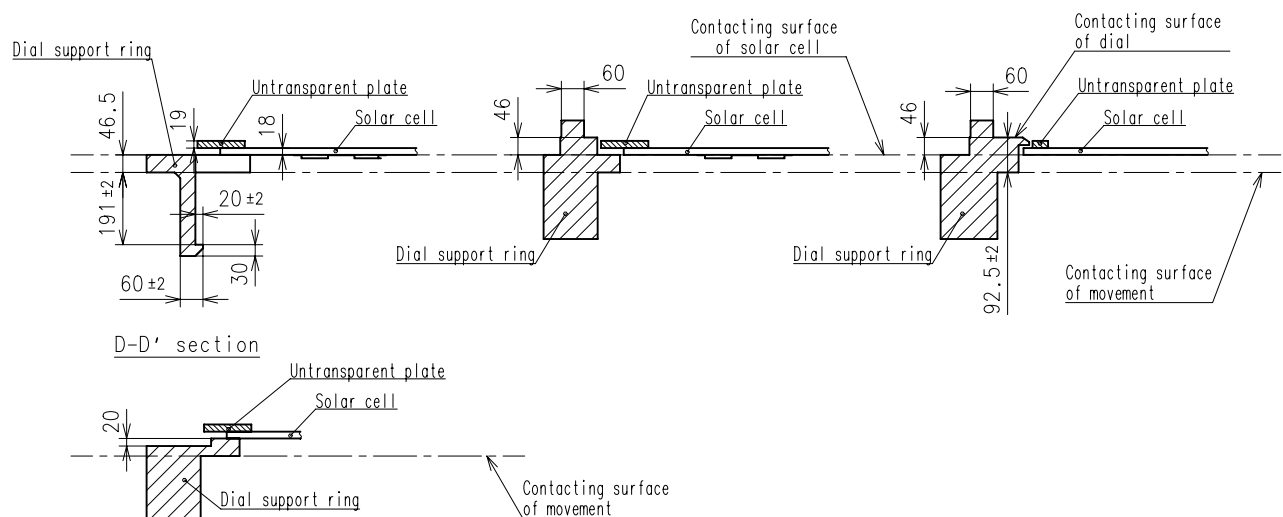
Hardness : Vickers 600±50



A-A' section

B-B' section

C-C' section



1. Attention for solar cell unit

Pay attention not to touch and scratch the surface of the solar cell.

2. Dial transparency rate

Keep the transparency rate of the dial more than 20%.

(Effective aperture is $\phi 27\text{mm}$)

Each elements of solar cell must be kept the transparency rate.

3. The guideline of charging time is as in below

Illumination (Lx)	Source of light	Environment	Dial transparency rate = 20%			Dial transparency rate = 30%		
			A (Approx. . Hours)	B (Approx. . Hours)	C (Approx. Minutes)	A (Approx. . Hours)	B (Approx. . Hours)	C (Approx. Minutes)
700	A fluorescent lamp	Inside the office	—	48	123	-	35	90
3,000		30W 20cm	90	11	28	65	8	20
10,000	Sun light	Cloudy	24	2.9	8	18	2.5	6
100,000		Fine weather	5	1.2	3	5	1	2

Condition A : Time required for full charge

Condition B : Time required for steady operation

Condition C : Time to charge 1 day of power

4. How to set the secondary battery unit

- Please set the exclusive secondary battery unit.

(The secondary battery is Lithium metal batteries without any environmentally harmful substances.)

- Please install the plus part of the secondary battery towards inside of the watch.
- When installing or changing the secondary battery unit, it is recommended to remove three secondary battery clamp screws first, then remove the secondary battery clamp not to damage the movement parts.

If you install the secondary battery unit without removing the secondary battery clamp, please install the secondary battery unit from [→] direction as illustrated below Fig.[1].

- Secondary battery unit guide must be connected to "Guide pole". (Refer to the Fig.[1] in below.)
- Check whether the secondary battery lead plate is surely connected to the secondary battery minus pattern.
- Install the secondary battery unit under the circuit block cover as illustrated below Fig.[1] and

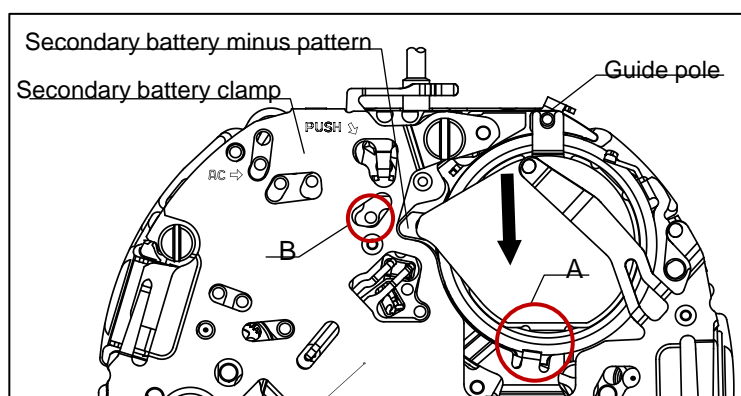


Fig.[1]

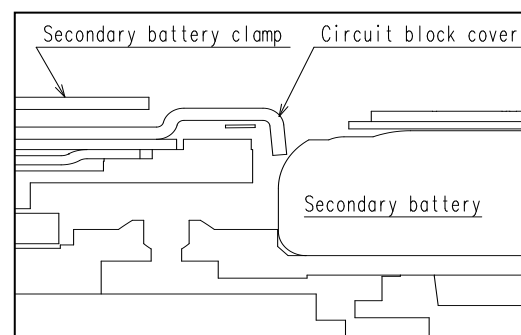


Fig.[2] A section

⚠ 5. To do system reset

- System-reset and adjusting the polarity of each step rotors is required as below after installing secondary battery unit.
Short the circuit pattern "AC" to the secondary battery clamp for more than 2 seconds.
Short the circuit pattern "B" to the secondary battery clamp for more than 2 seconds at 2nd click.

6. How to remove the setting stem

- When removing the setting stem, pull out the crown at 1st click position and then remove the setting stem while pressing the hollow portion of setting lever by tweezers. (Refer to the Fig.[3].)
- Please do not transform the earth spring.

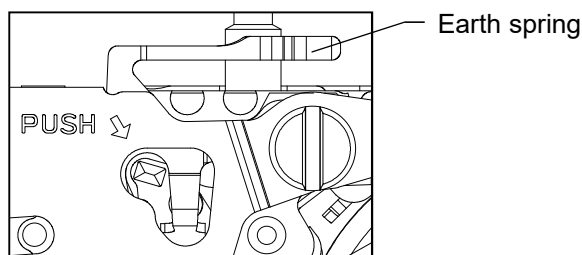


Fig.[3] Crown pulled out at 1st click

7. Attention of casing part structure

- Use the specified dial support ring to prevent rotation of the movement inside of the case in order to stabilize the button operation.
Refer to the [Solar cell unit] page instruction as to the shape and tolerance.
- Use the metal case to prevent from the movement mal-function by static electricity.
- The center wheel have a safety stopper structure to prevent the minute hand from being pressed too much. However pay attention to the contact between hour hand and minute hand.

8. How to set the hands

- Each hand moves at step interval. Set the each hand at correct position according to the scale on the dial in order not to make a mistake in reading time.
- Do not turn the hand forcibly.

9. How to remove the hands

- When removing the hands, use exclusive fork-shaped tools.
- Do not remove the dial under the condition that any hands are set.

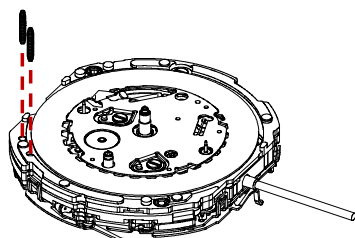
10. Caution

When charging the watch, do not place it too close to fluorescent lamp or other light sources as the watch temperature will become extremely high, causing damage to the parts inside the watch.

11. How to set the solar cell lead terminal

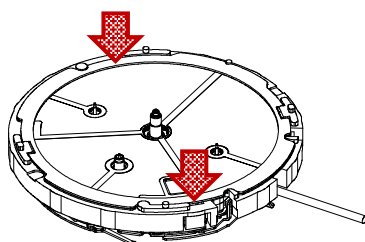
Please set 2pcs of solar cell lead terminals in accordance with this illustration.

As to the solar cell lead terminal shape, there is no distinction between upper and lower.



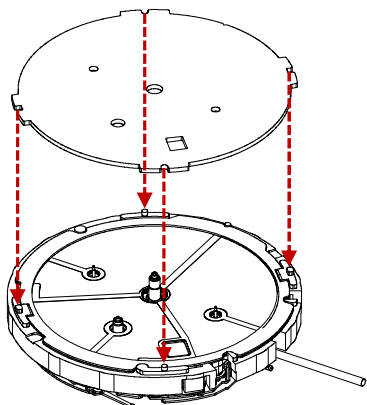
12. How to set the solar cell unit

Push above part of each hook on the solar cell unit into main plate certainly.



13.How to set the dial

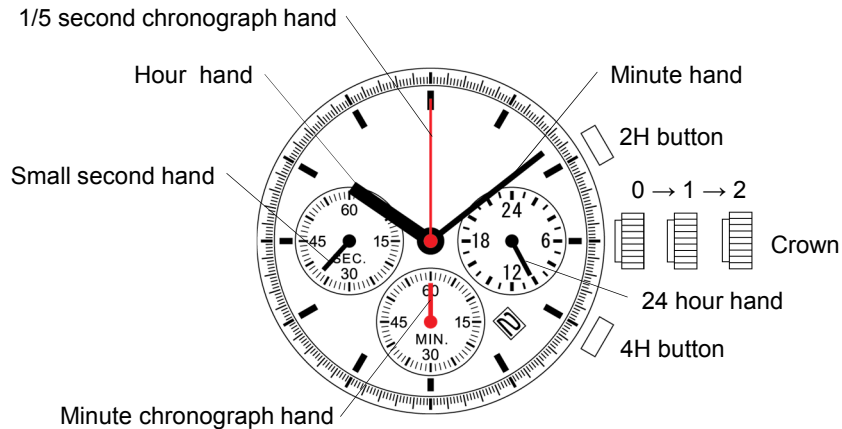
The dial is held by the four guide poles on the solar cell unit.

**14.System reset as complete watch**

System-reset(Refer to Operation-01[*1].) is required in case of below,

- after replacement of secondary battery unit.
- malfunction or abnormal operation when an error occurs

※It is necessary to set the "0" position after system-reset, because "0" position of small hands may slip off.



	Crown position		
	0 click	1st click	2nd click
Crown	Free	Turn clockwise for date change	Time setting
2H button	Chronograph Start/Stop Restart	Chronograph Start/Stop Restart	[*1]
4H button	Chronograph Reset Split Split release	Chronograph Reset Split Split release	[*1]

[*1] How to set the "0" position / System-reset (Crown position : 2nd click)

How to set the "0" position.

Pull crown out to the 2nd click position.

↓
--> Press 2H button for 2 seconds.
Minute chronograph hand turns a full round and can now be set to correct "0" position.

↓
Press 4H button repeatedly to set it to "0" position.

↓
Press 2H button for 2 seconds.
1/5 second chronograph hand turns a full round and can now be set to correct "0" position.

↓
Press 4H button repeatedly to set it to "0" position.

Press 2H button for 2 seconds here will allow you to resume the procedure again as indicated by the arrow if necessary.

↓
Push crown back to normal position.

System-reset

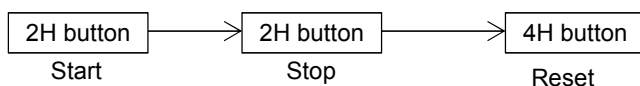
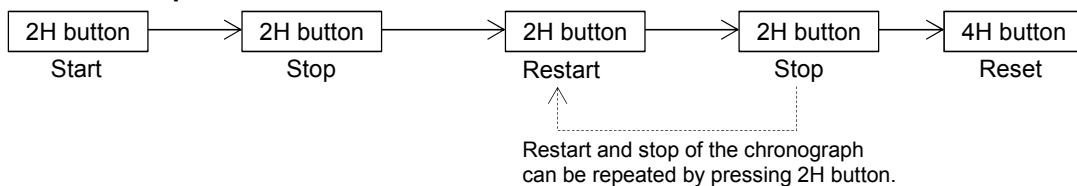
Pull crown out to the 2nd click position.

↓
Press 2H and 4H buttons at the same time for longer than 2 seconds.

It is necessary to set the "0" position after system-reset.

Chronograph function

- The chronograph can measure up to 60 minutes in 1/5 second increments.
- When the measurement reaches 60 minutes, the chronograph automatically stops counting.

■ Standard measurement**■ Accumulated elapsed time measurement****■ Split time measurement**