

Watch Movement Specification and Drawing

STANDARD

Cal. AL20E

Movement Size

6 3/4 × 8'''

Casing Diameter

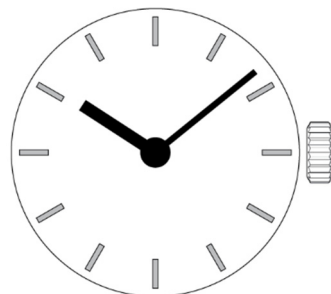
15.3 × 17.8 mm

Height

2.99mm

Battery Life

2 years

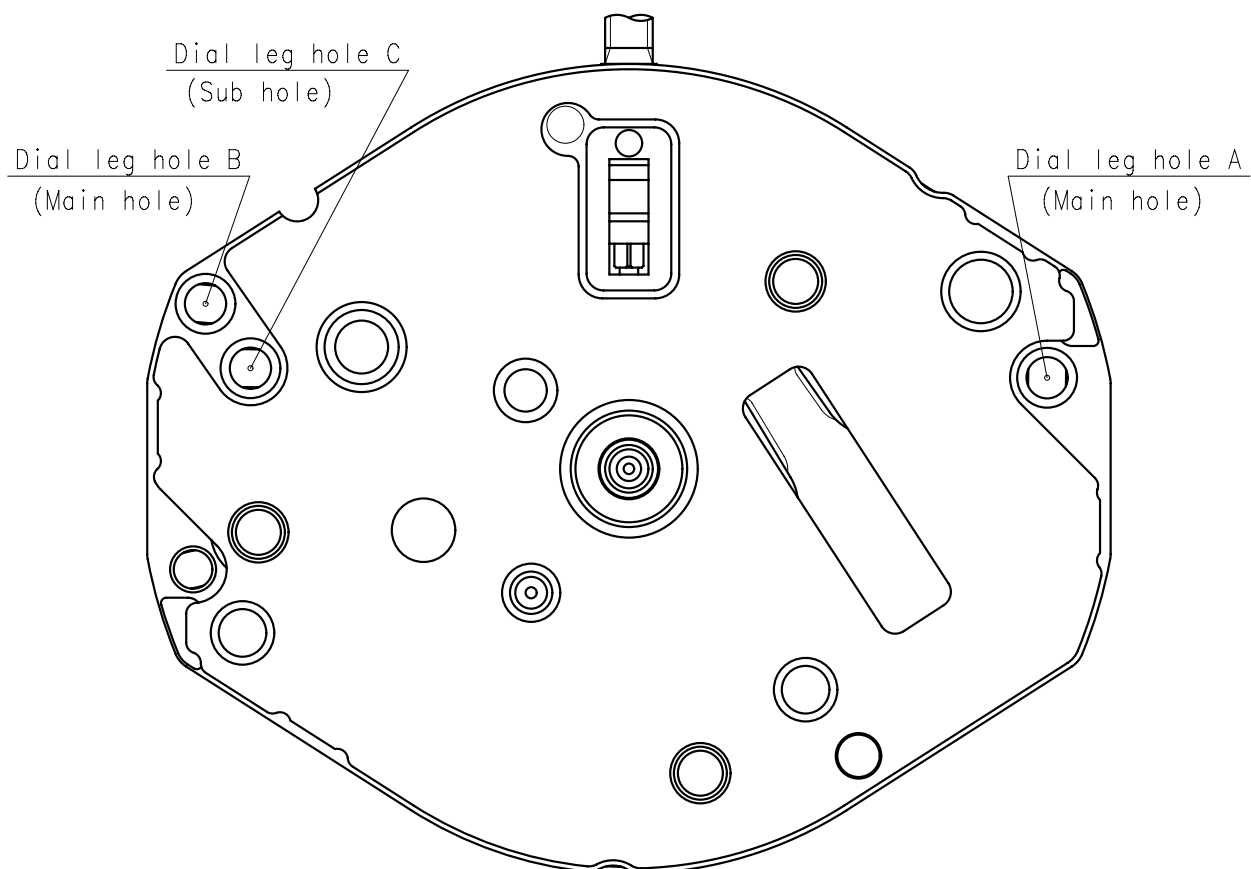
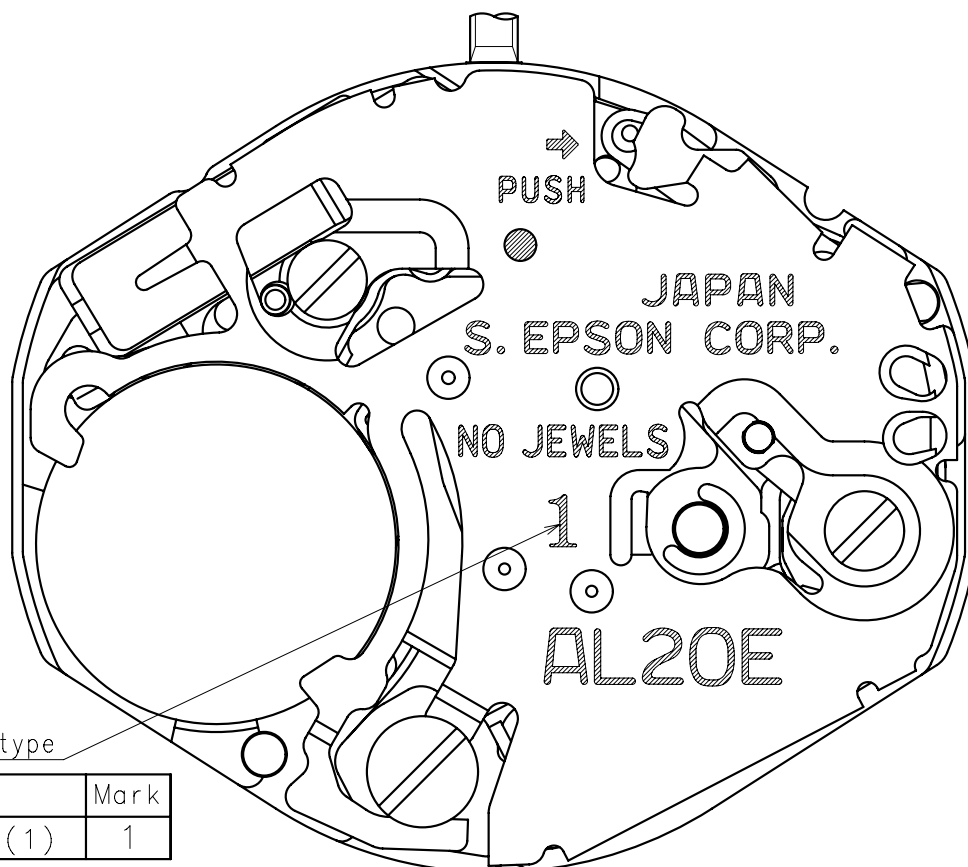


Date: 7/Aug./'20

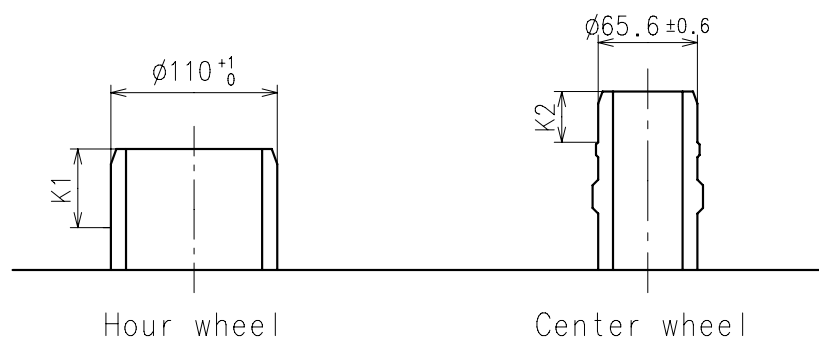
Cal. AL20E

Items	Rev.	Page
Specifications	04	1
Appearance	08	2
Casing	03	3
Hand fitting	05	4
Hand setting stem	05	5
Dial	03	6
Casing ring	02	7

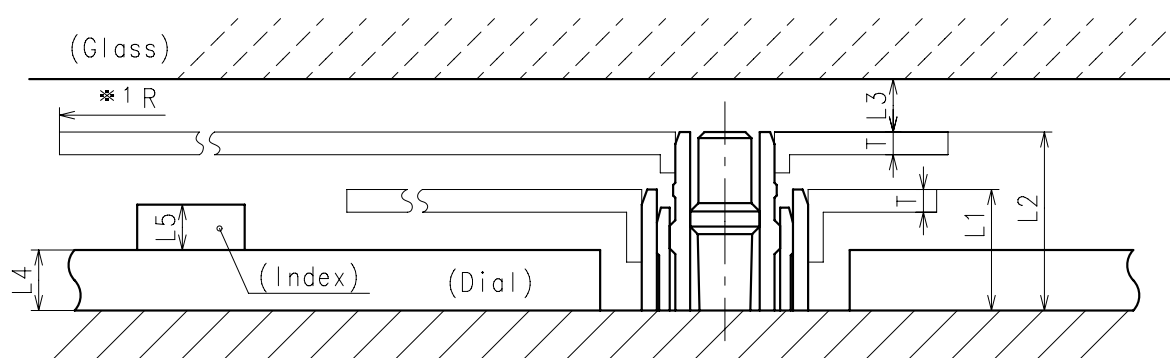
Cal.	AL20E	<div> Date : 7/Aug./'20 </div> <div> Rev. : 04 </div>
<div> Specifications </div>		
<div> Analog Quartz 6 3/4 × 8''' Standard Series Movement / Two Hands (H/M) </div>		
<div> 1. MOVEMENT DIMENSIONS </div>		
	<div> Outside diameter Casing diameter Total height </div>	<div> 15.30mm(3-9H) × 18.20mm(12-6H) 15.30mm(3-9H) × 17.80mm(12-6H) 2.99mm </div>
<div> 2. TIME STANDARD </div>		
	<div> Type of quartz oscillator Frequency of quartz oscillator Accuracy Operating temperature range Regulation device </div>	<div> Tuning fork 32,768 Hz ±20 seconds per month (on wrist) −5°C to +50°C Nil (Pre-adjusted) </div>
<div> 3. INDICATOR / FUNCTIONS </div>		
	<div> 2 Hands Reset switch Setting mechanism </div>	<div> Hour / Minute Crown at normal position : Free Crown pulled out 1st click : Time setting / Reset </div>
<div> 4. FEATURES </div>		
	<div> Jewels Anti-magnetism Maximum unbalance of hands </div>	<div> 0 Jewels Over 1600A/m (Direct current magnetic field) Minute hand : 0.6 μ N·m Hour hand : 0.5 μ N·m </div>
<div> 5. BATTERY </div>		
	<div> Type / Size Recommended battery Nominal voltage Battery life Driving current consumption Operation stopping voltage </div>	<div> Silver oxide battery / φ 6.8mm × t 2.6mm SR626SW (Maxell, Murata, Seizaiken) 1.55 V Approx. 2 years Approx. 1.5 μ A 1.1 V </div>
<div> 6. SEPARATED PARTS (Parts code) </div>		
	<div> Hand setting stem Battery </div>	<div> 0354788 or 0354787 SR626SW </div>
<div> 7. TEST OF ACCURACY </div>		
	<div> Equipment to be used Duration of measurement Microphone to be used </div>	<div> SEIKO quartz tester QT-99, Greiner quartz timer-C , Witschi Q-tester 4000 10 seconds Electromagnetic detection type </div>
<div> All specifications are subject to change without notice. </div>		



- ※ Minute hand unbalance $\leq 0.6\mu\text{ N}\cdot\text{m}$ ($60\mu\text{ g}\cdot\text{m}$)
- ※ Hour hand unbalance $\leq 0.5\mu\text{ N}\cdot\text{m}$ ($50\mu\text{ g}\cdot\text{m}$)

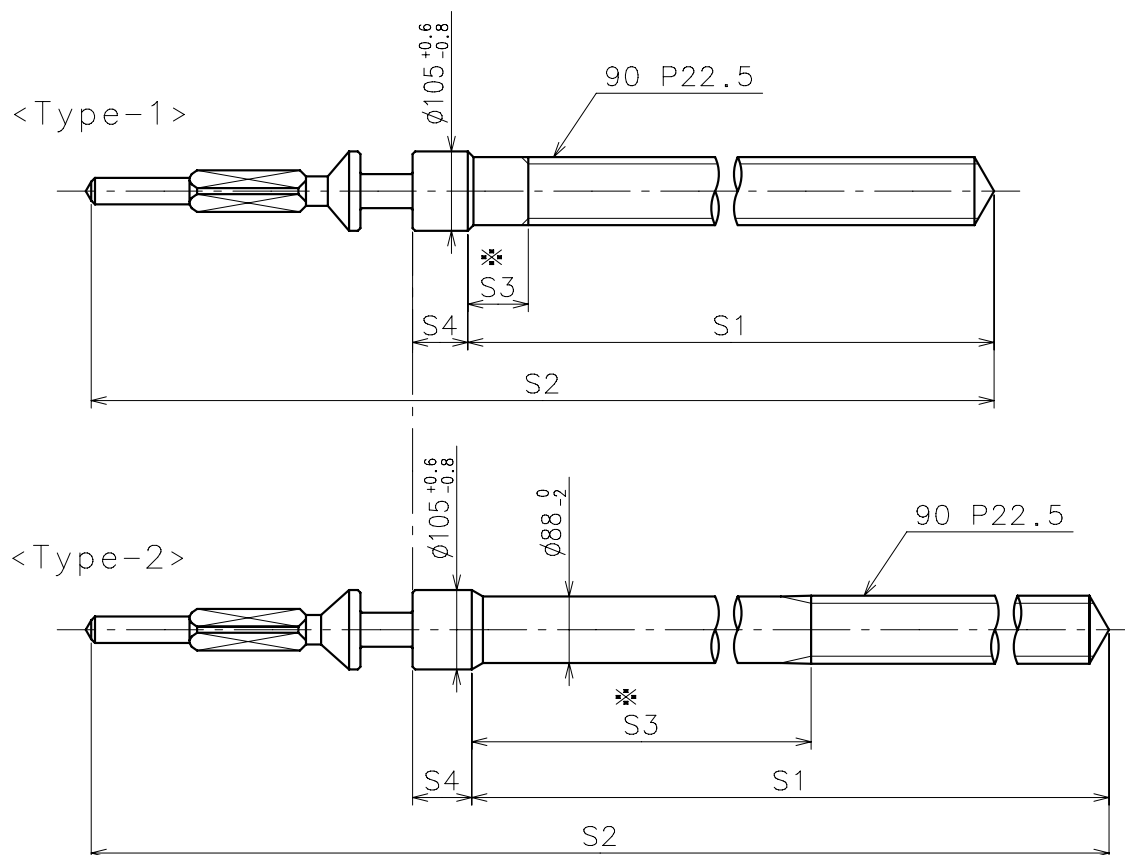


	Parts No.		Dimension	
	Hour wheel	Center wheel	K1	K2
Type S (1) AL20E1	0271796	0221797	52	33.5



	L1	L2	L3	L4	L5	T	*1 R
Type S (1) AL20E1	80	118	MIN: 35	40	MAX: 30	15	MAX: 1250

※ 1: It is the size taken into consideration for hands attachment.
Please observe some standard value specified in unbalance when using long hands.

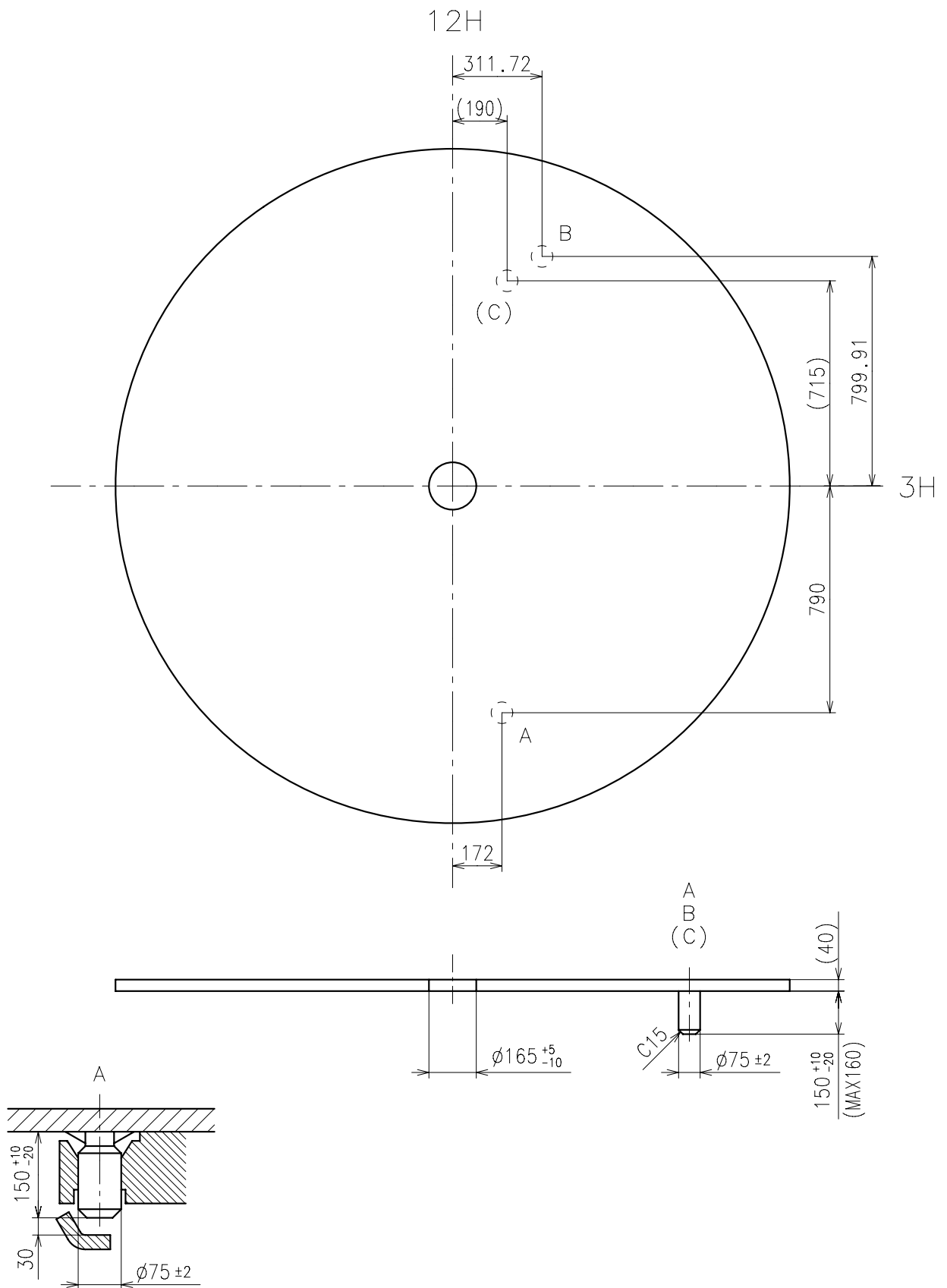


* Not threaded

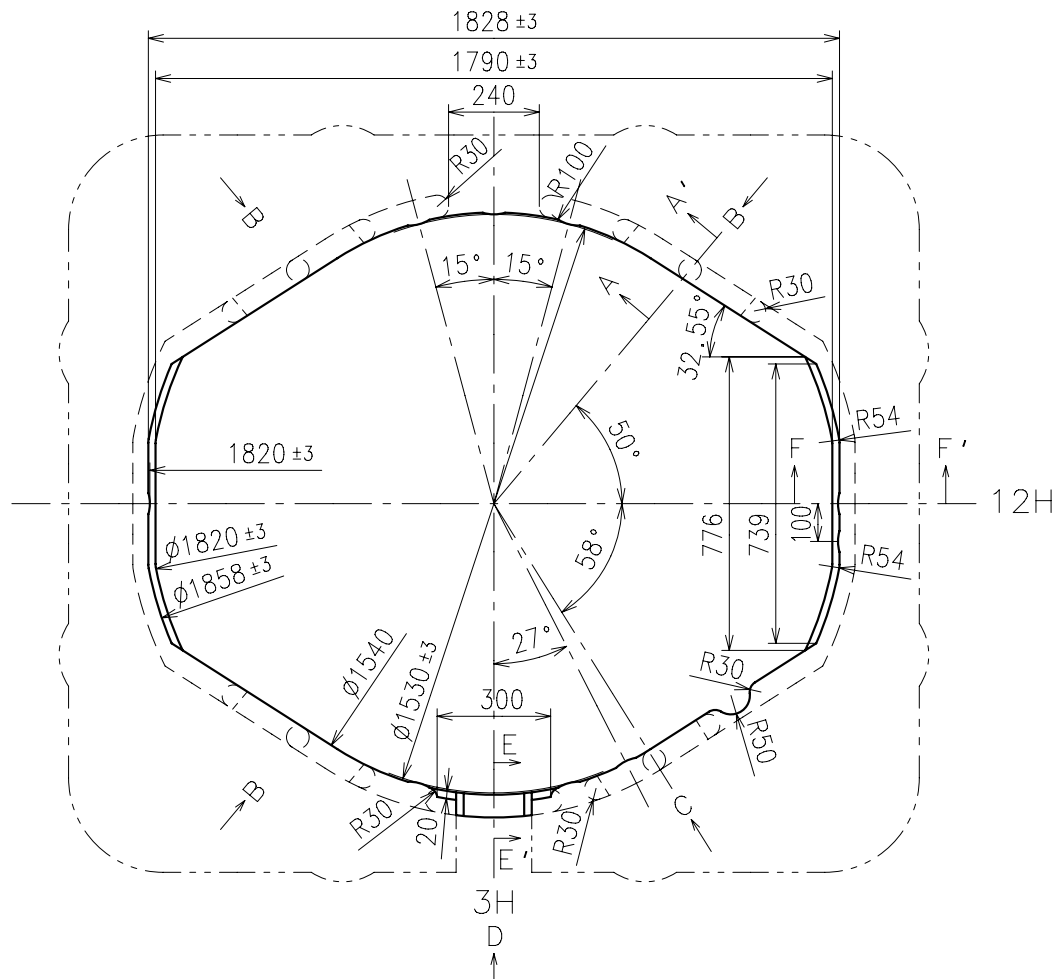
	Part No.	S1	S2	* S3	S4
Type-1 (Standard)	0354788	1473	1971	80	73
Type-2	0354787	1743	2246	887	78

Material : Steel

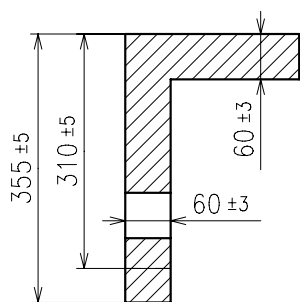
Hardness : Vickers 530±50



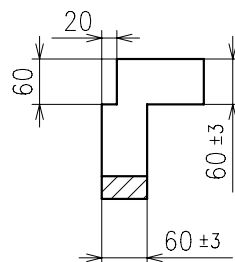
Use dial leg A-B(Main) or A-C(Sub)



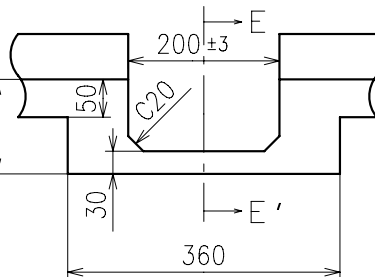
A-A' section



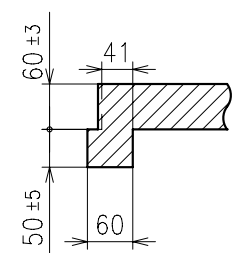
E-E' section



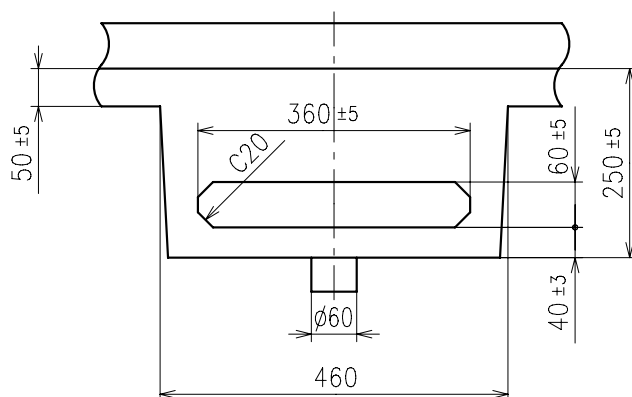
D view



F-F' section



B view



C view

