

Watch Movement Specification and Drawing

STANDARD

Cal. AL55A

Movement Size

6 3/4 × 8'''

Casing Diameter

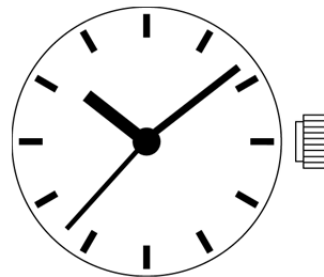
15.3 × 17.8 mm

Height

2.99mm

Battery Life

2 years

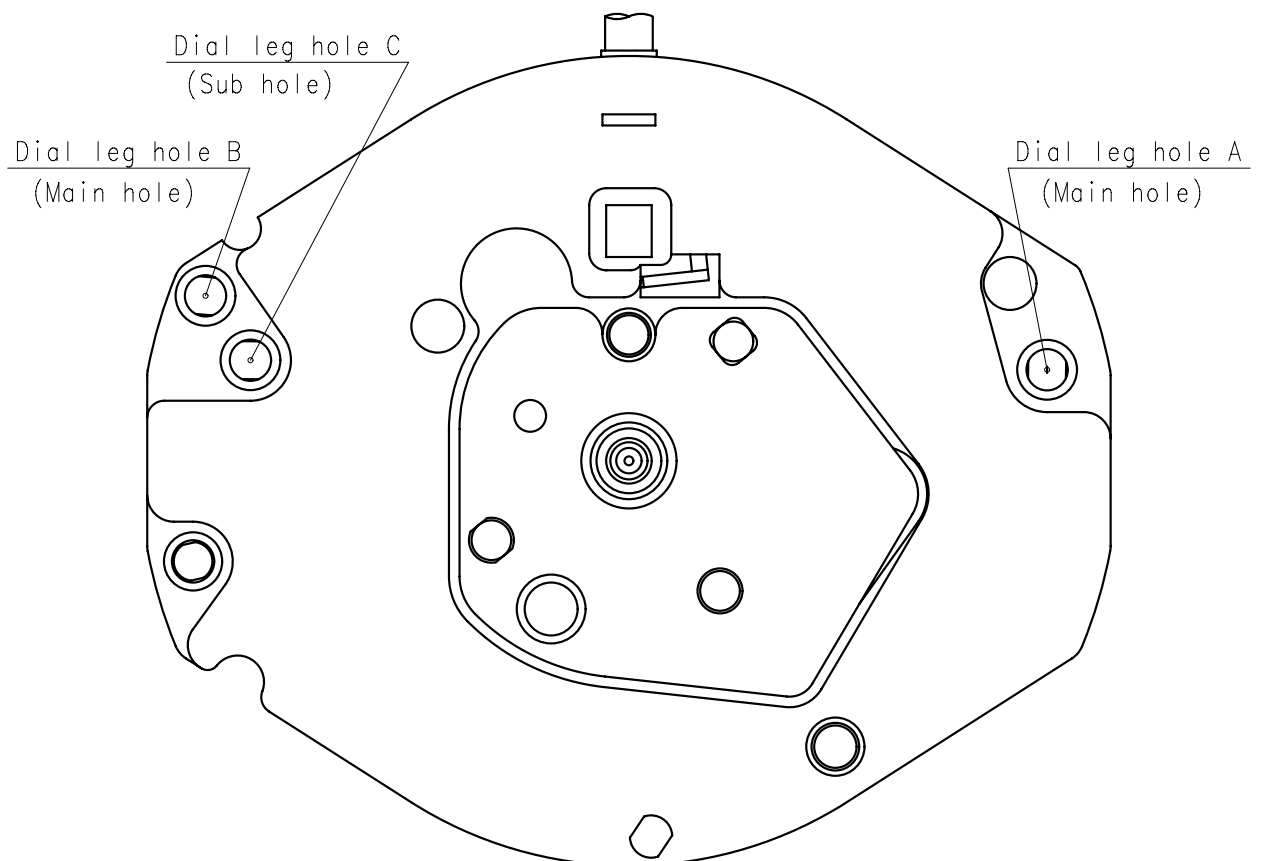
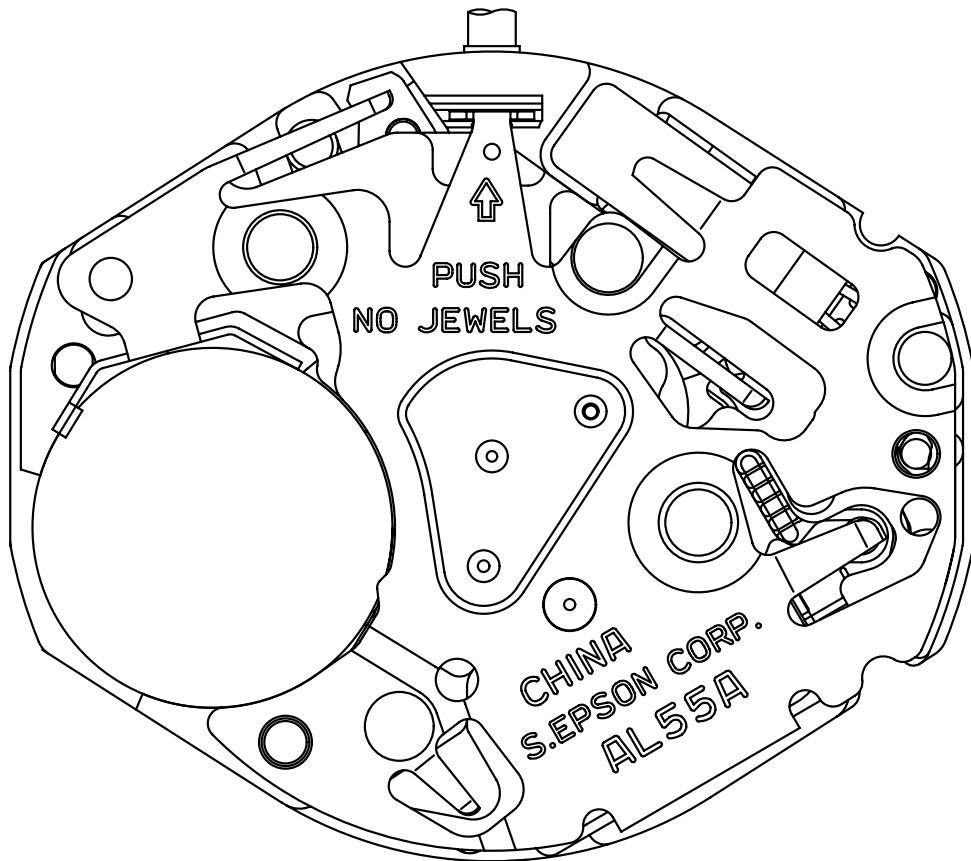


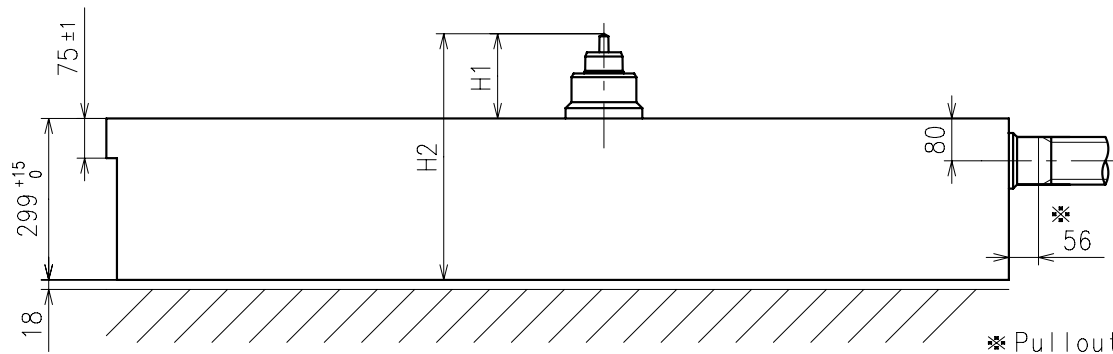
Date: 20/Oct./'14

Cal. AL55A

Items	Rev.	Page
Specifications	02	1
Appearance	02	2
Casing	01	3
Hand fitting	01	4
Hand setting stem	01	5
Dial	01	6
Casing ring	01	7

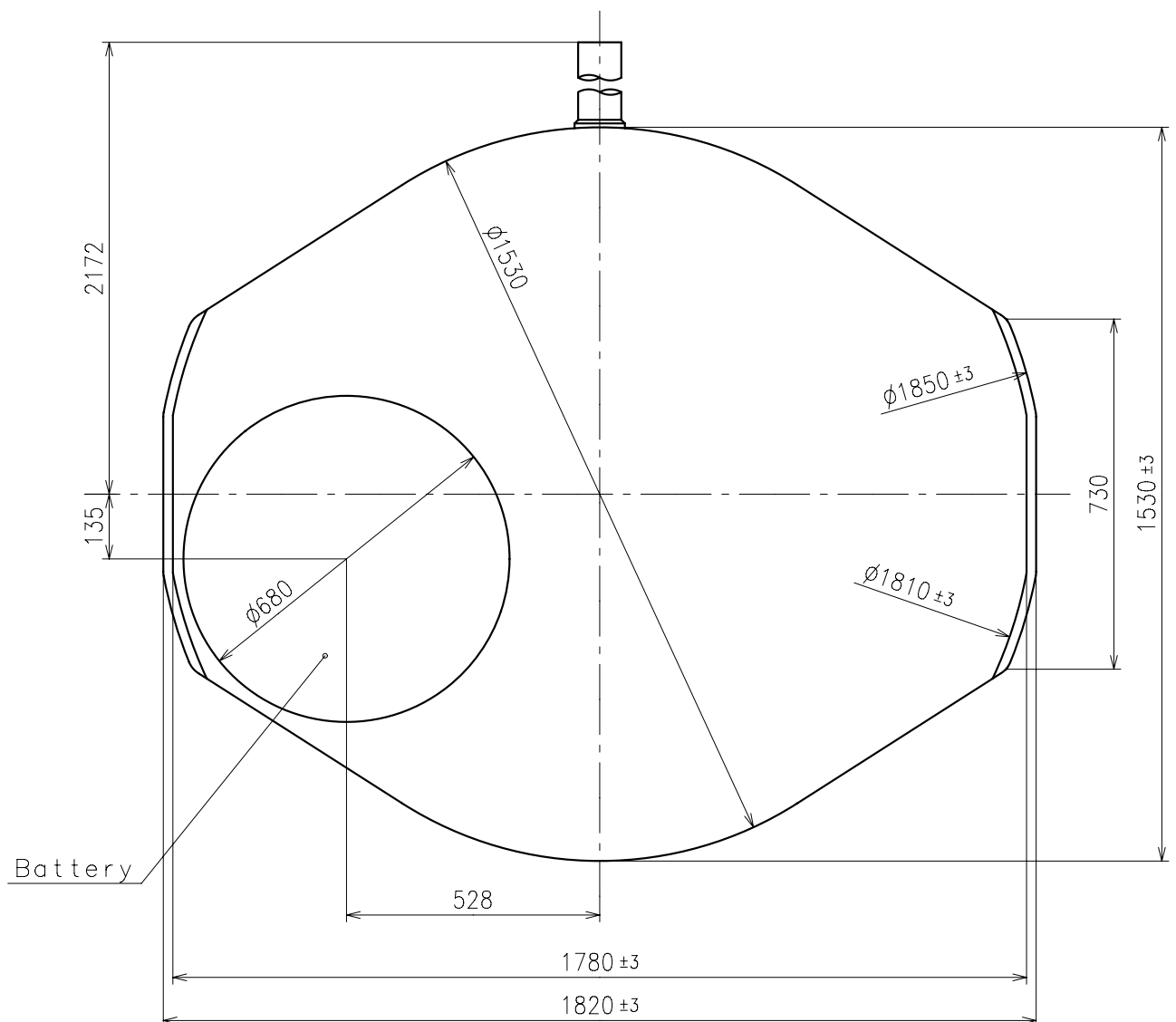
Cal.	AL55A	Specifications	Date : 20/Oct./'14
			Rev. : 02
Analog Quartz 6 3/4 × 8''' Standard Series Movement / Three Hands (H/M/S)			
1. MOVEMENT DIMENSIONS			
Outside diameter	15.30mm(3-9H) × 18.20mm(12-6H)		
Casing diameter	15.30mm(3-9H) × 17.80mm(12-6H)		
Total height	2.99mm		
2. TIME STANDARD			
Type of quartz oscillator	Tuning fork		
Frequency of quartz oscillator	32,768 Hz		
Accuracy	±20 seconds per month (on wrist)		
Operating temperature range	−5°C to +50°C		
Regulation device	Nil (Pre-adjusted)		
3. INDICATOR / FUNCTIONS			
3 Hands	Hour / Minute / Second		
	All hands are same as AL35		
Reset switch			
Setting mechanism	Crown at normal position	: Free	
	Crown pulled out 1st click	: Time setting / Reset	
4. FEATURES			
Jewels	0 Jewels		
Anti-magnetism	Over 1600A/m (Direct current magnetic field)		
Maximum unbalance of hands	Second hand	: 0.06 μ N·m	
	Minute hand	: 0.6 μ N·m	
	Hour hand	: 0.5 μ N·m	
5. BATTERY			
Type / Size	Silver oxide battery / φ 6.8mm × t 2.6mm		
Recommended battery	SR626SW (Maxell, Sony, Seizaiken)		
Nominal voltage	1.55 V		
Battery life	Approx. 2 years		
Driving current consumption	Approx. 1.5 μ A		
Operation stopping voltage	1.1 V		
6. SEPARATED PARTS (Parts code)			
Hand setting stem	0351751		
Battery	SR626SW		
7. TEST OF ACCURACY			
Equipment to be used	SEIKO quartz tester QT-99, Greiner quartz timer-C , Witschi Q-tester 4000		
Duration of measurement	10 seconds		
Microphone to be used	Electromagnetic detection type		
All specifications are subject to change without notice.			



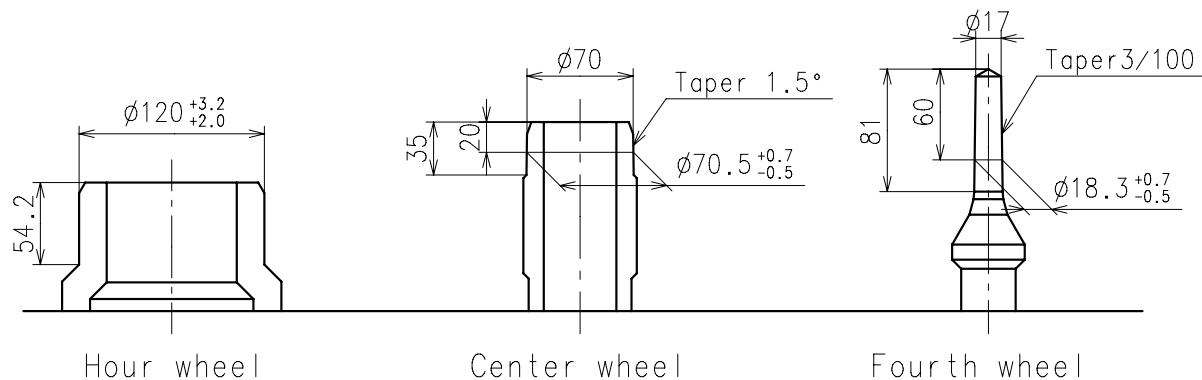


* Pullout stroke

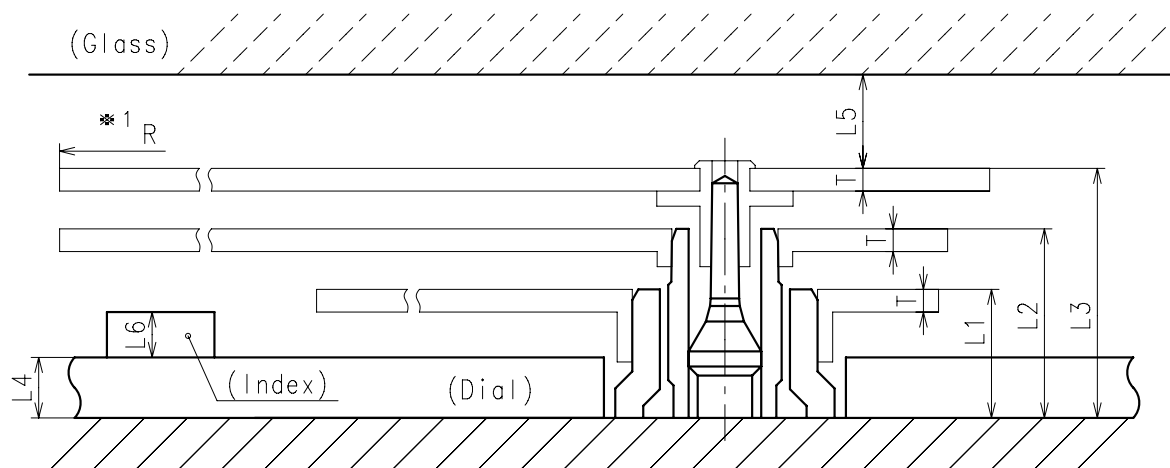
Center post		Type S (1) AL55A1
Maximum height from dial support	H1	160
Total height including movement	H2	459



- * Second hand unbalance $\leq 0.06\mu \text{ N} \cdot \text{m}$ ($6\mu \text{ g} \cdot \text{m}$)
- * Minute hand unbalance $\leq 0.6\mu \text{ N} \cdot \text{m}$ ($60\mu \text{ g} \cdot \text{m}$)
- * Hour hand unbalance $\leq 0.5\mu \text{ N} \cdot \text{m}$ ($50\mu \text{ g} \cdot \text{m}$)

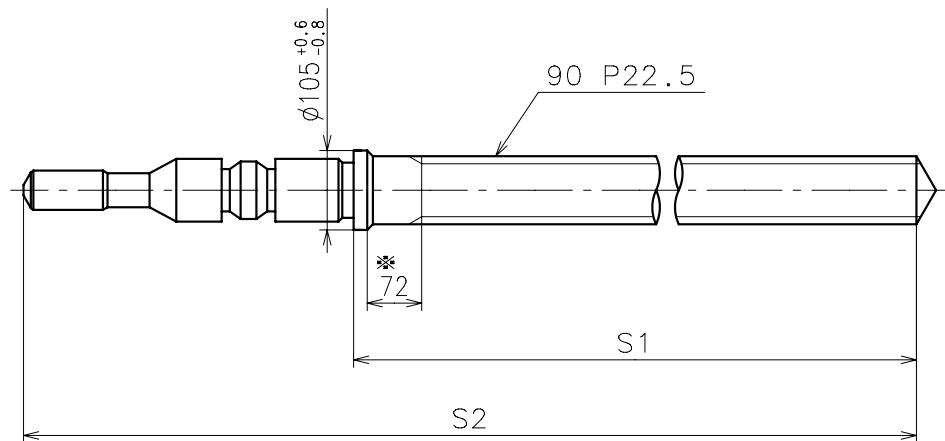


	Parts No.		
	Hour wheel	Center wheel	Fourth wheel
Type S (1) AL55A1	0271741	0221751	0241741



	L1	L2	L3	L4	L5	L6	T	*1 R
Type S (1) AL55A1	85	125	165	40	MIN: 50	MAX: 30	15	MAX: 1250

*1: It is the size taken into consideration for hands attachment.
Please observe some standard value specified in unbalance when using long hands.

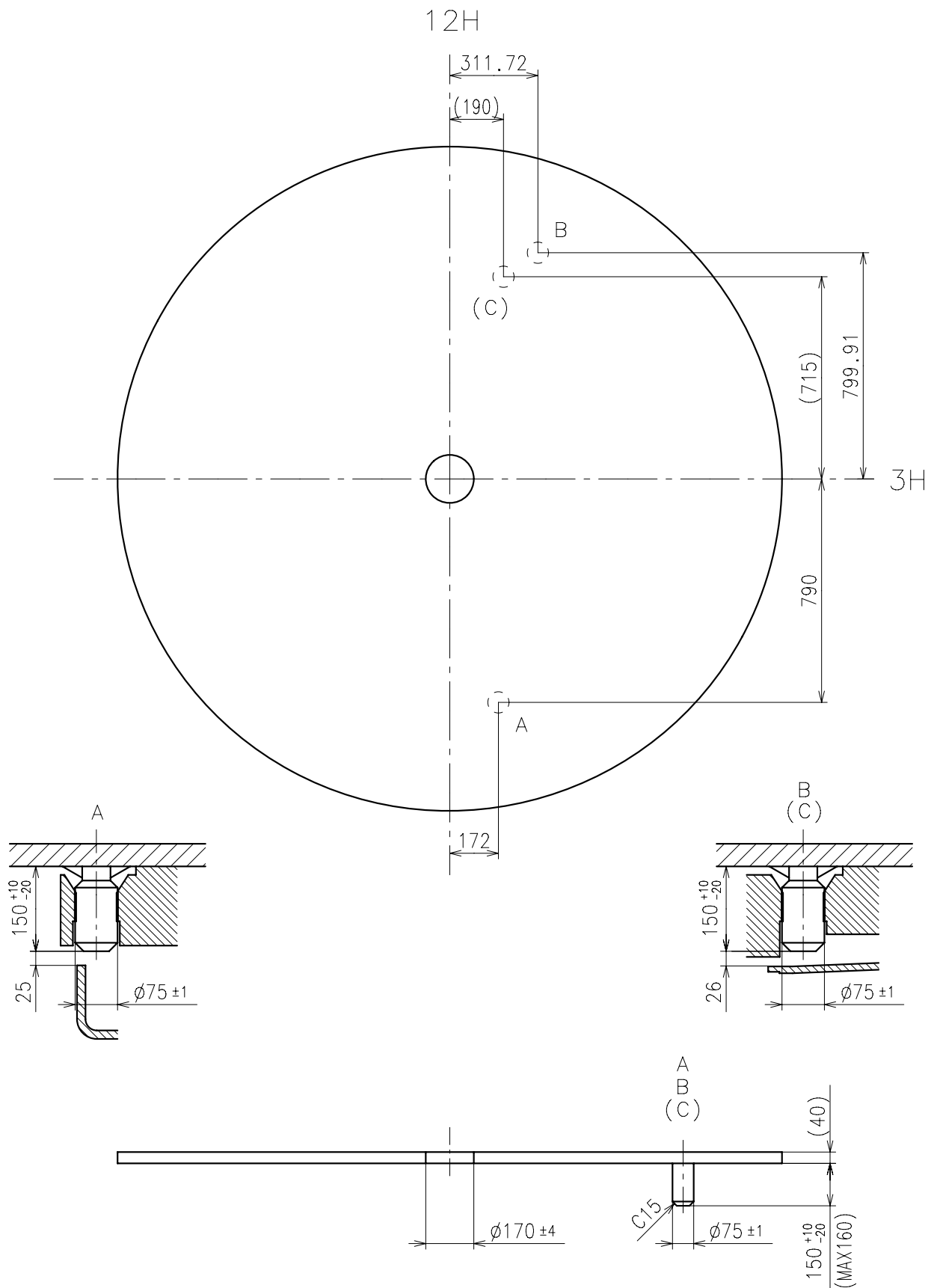


* Not threaded

	Part No.	S1	S2
Standard	0351751	1420	1856.5

Material : Steel

Hardness : Vickers 600±50



Use dial leg A-B(Main) or A-C(Sub)

