

## Watch Movement Specification and Drawing

### STANDARD

# Cal. Y120F

Movement Size

**6 3/4 × 8'''**

Casing Diameter

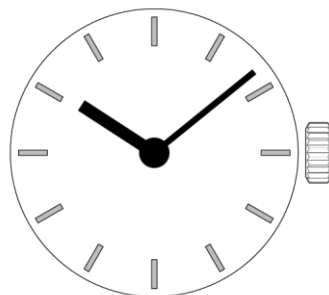
**15.3 × 17.8 mm**

Height

**2.99mm**

Battery Life

**3 years**

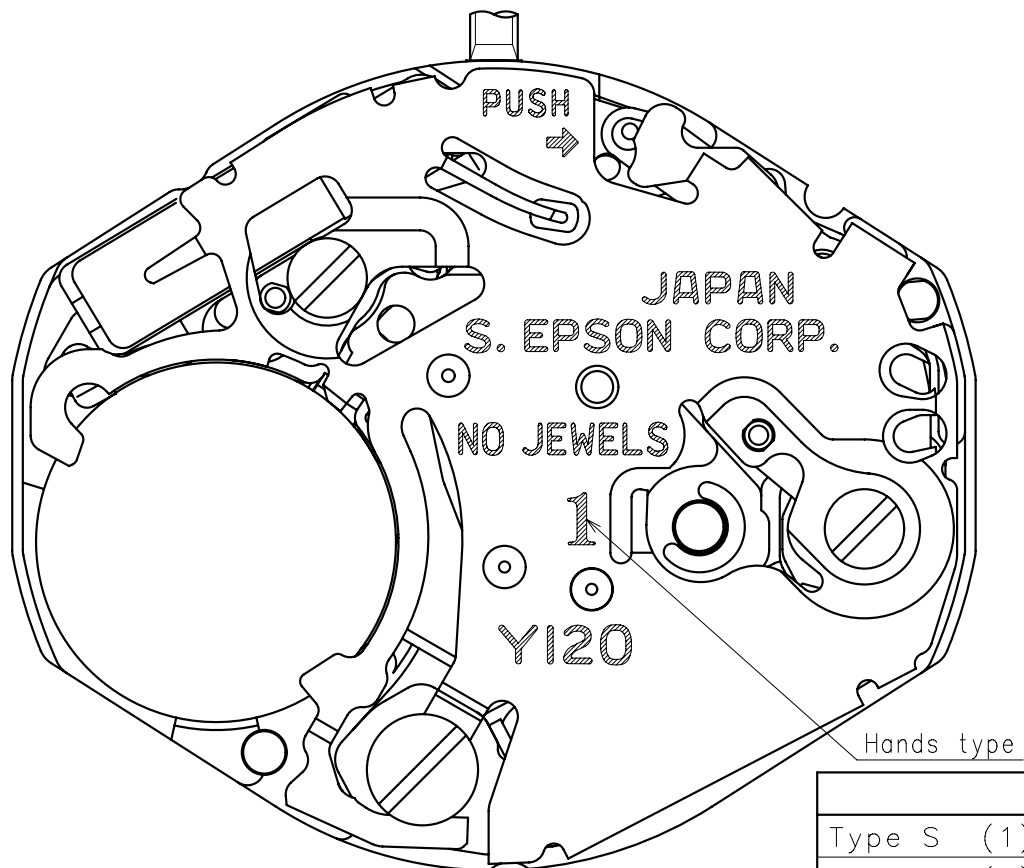


Date: 7/Aug./'20

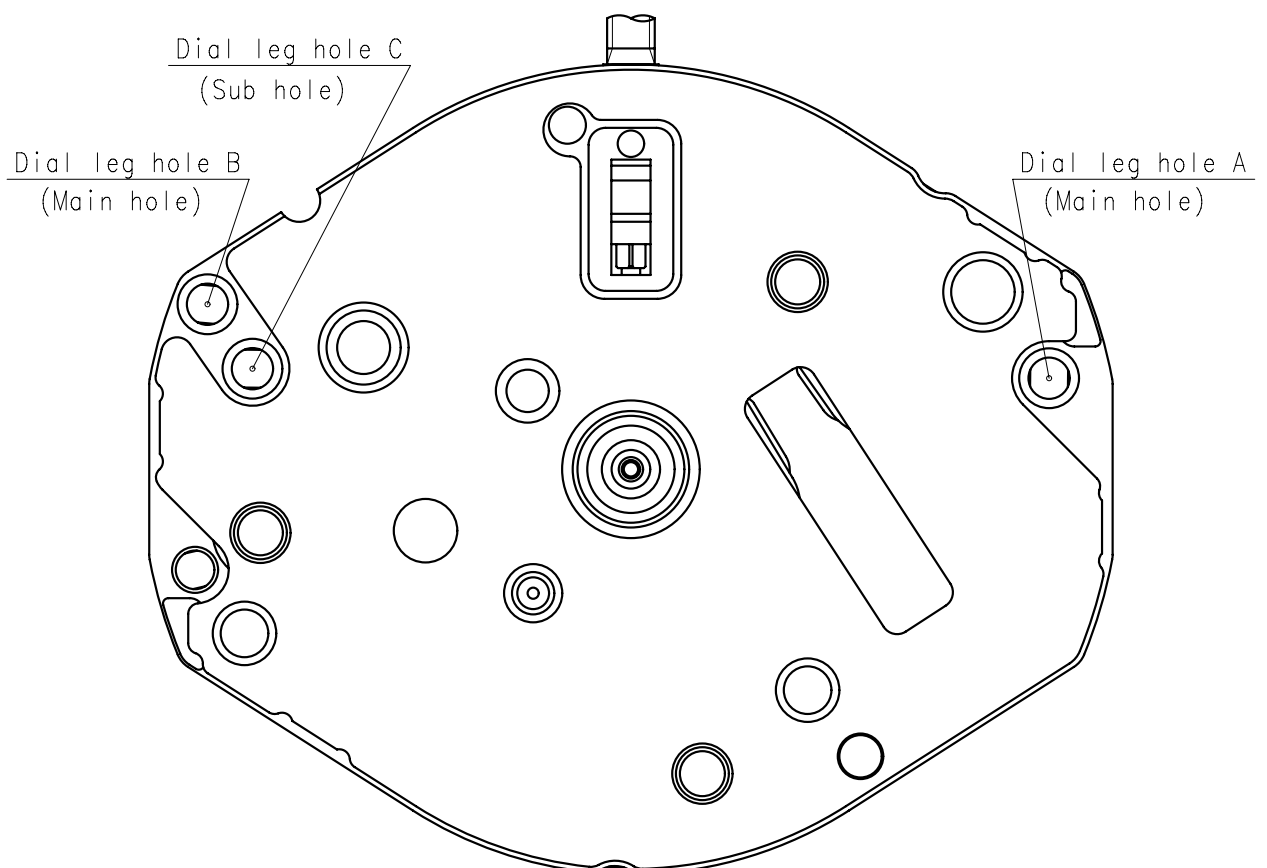
# Cal. Y120F

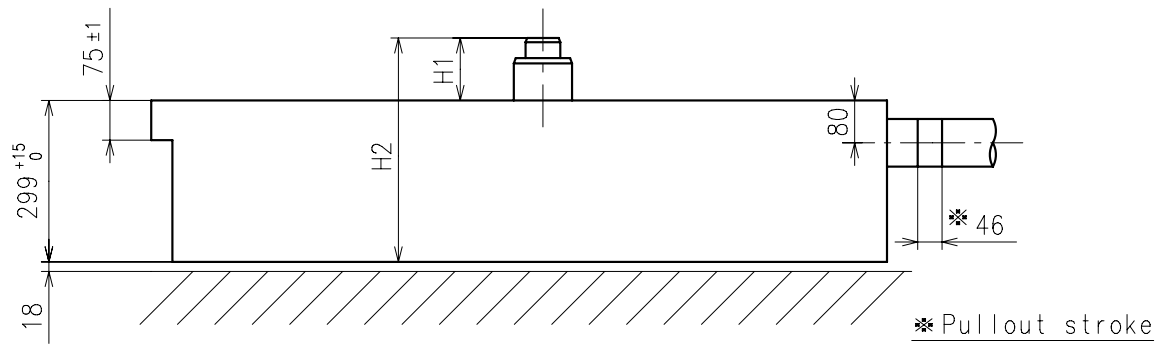
Items	Rev.	Page
Specifications	01	1
Appearance	01	2
Casing	01	3
Hand fitting	02	4
Hand setting stem	00	5
Dial	00	6
Casing ring	00	7

Cal.	Y120F	Specifications		Date : 7/Aug./'20	
				Rev. : 01	
Analog Quartz 6 3/4 × 8''' Standard Series Movement / Two Hands (H/M)					
1. MOVEMENT DIMENSIONS					
Outside diameter		15.30mm(3-9H) × 18.20mm(12-6H)			
Casing diameter		15.30mm(3-9H) × 17.80mm(12-6H)			
Total height		2.99mm			
2. TIME STANDARD					
Type of quartz oscillator		Tuning fork			
Frequency of quartz oscillator		32,768 Hz			
Accuracy		±20 seconds per month (on wrist)			
Operating temperature range		−5°C to +50°C			
Regulation device		Nil (Pre-adjusted)			
3. INDICATOR / FUNCTIONS					
2 Hands		Hour / Minute			
Reset switch					
Setting mechanism		Crown at normal position		: Free	
		Crown pulled out 1st click		: Time setting / Reset	
4. FEATURES					
Jewels		0 Jewels			
Anti-magnetism		Over 1600A/m (Direct current magnetic field)			
Maximum unbalance of hands		Minute hand		: 0.6 μ N•m	
		Hour hand		: 0.5 μ N•m	
5. BATTERY					
Type / Size		Silver oxide battery / φ 6.8mm × t 2.6mm			
Recommended battery		SR626SW (Maxell, Murata)			
Nominal voltage		1.55 V			
Battery life		Approx. 3 years			
Driving current consumption		Approx. 1.04 μ A			
Operation stopping voltage		1.1 V			
6. SEPARATED PARTS (Parts code)					
Hand setting stem		0354788 or 0354787			
Battery		SR626SW			
7. TEST OF ACCURACY					
Equipment to be used		SEIKO quartz tester QT-99, Greiner quartz timer-C , Witschi Q-tester 4000			
Duration of measurement		10 seconds			
Microphone to be used		Electromagnetic detection type			
All specifications are subject to change without notice.					

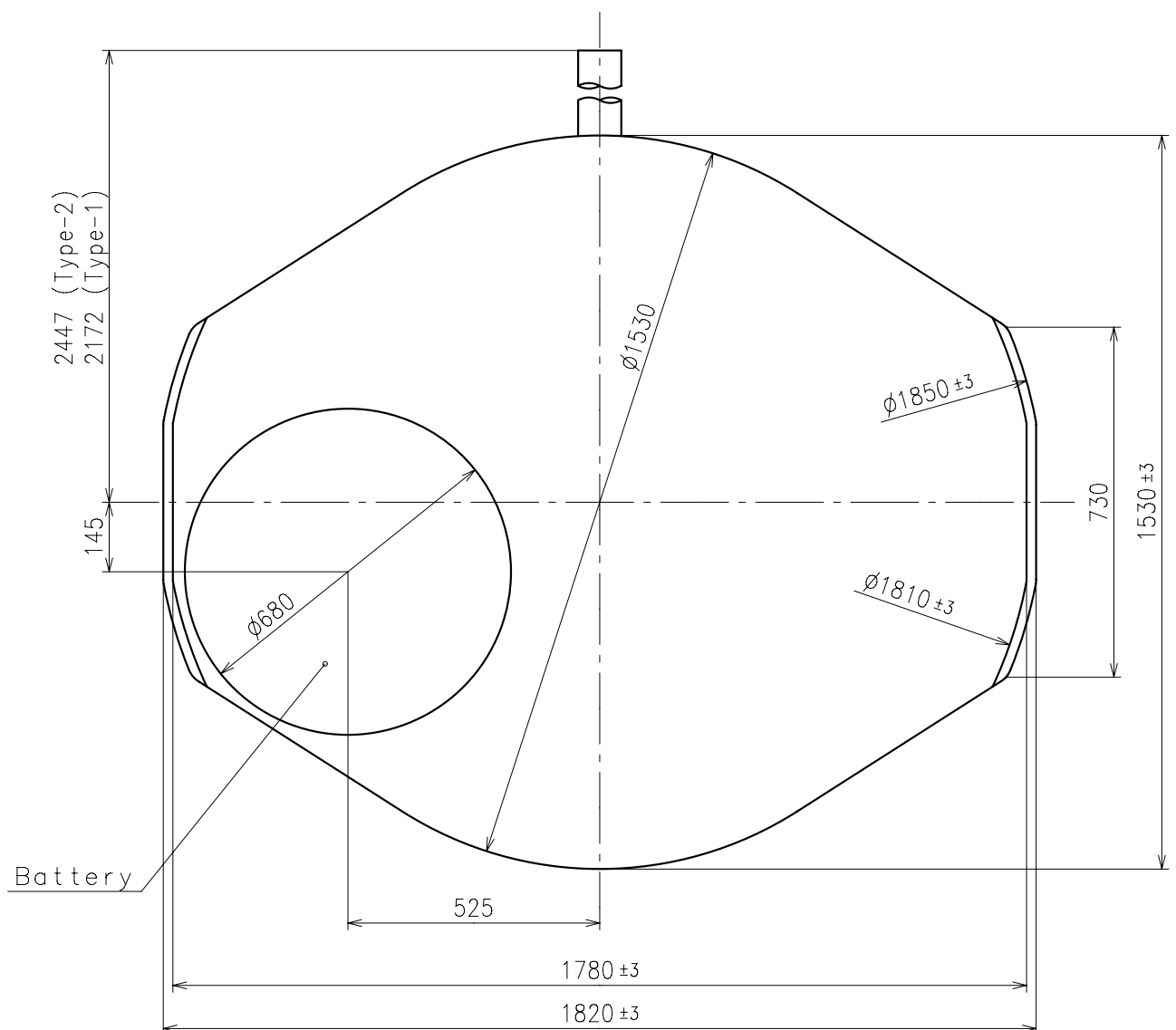


	Mark
Type S (1)	1
Type LI (3)	3
Type LII (4)	4





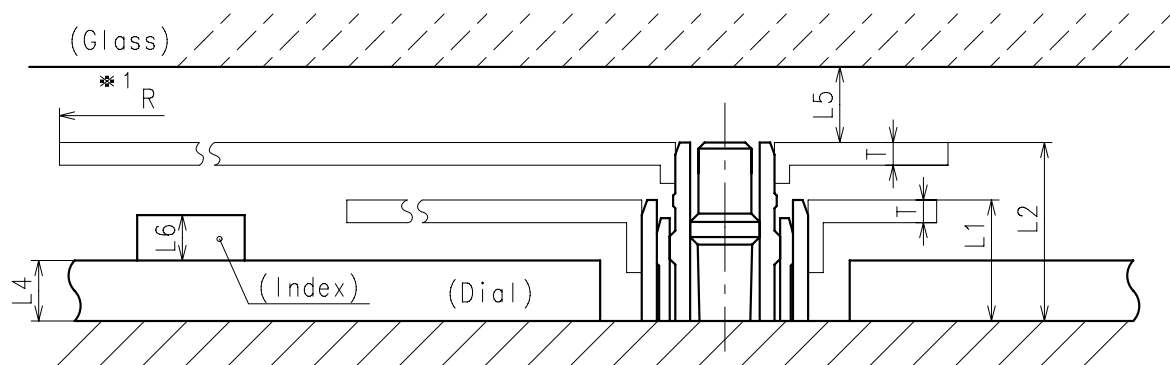
Center post		Type S (1) Y120F1	Type L I (3) Y120F3	Type L II (4) Y120F2
Maximum height from dial support	H1	118	166	226
Total height including movement	H2	417	465	525



- ※ Minute hand unbalance  $\leq 0.6\mu \text{ N} \cdot \text{m}$  ( $60\mu \text{ g} \cdot \text{m}$ )
- ※ Hour hand unbalance  $\leq 0.5\mu \text{ N} \cdot \text{m}$  ( $50\mu \text{ g} \cdot \text{m}$ )

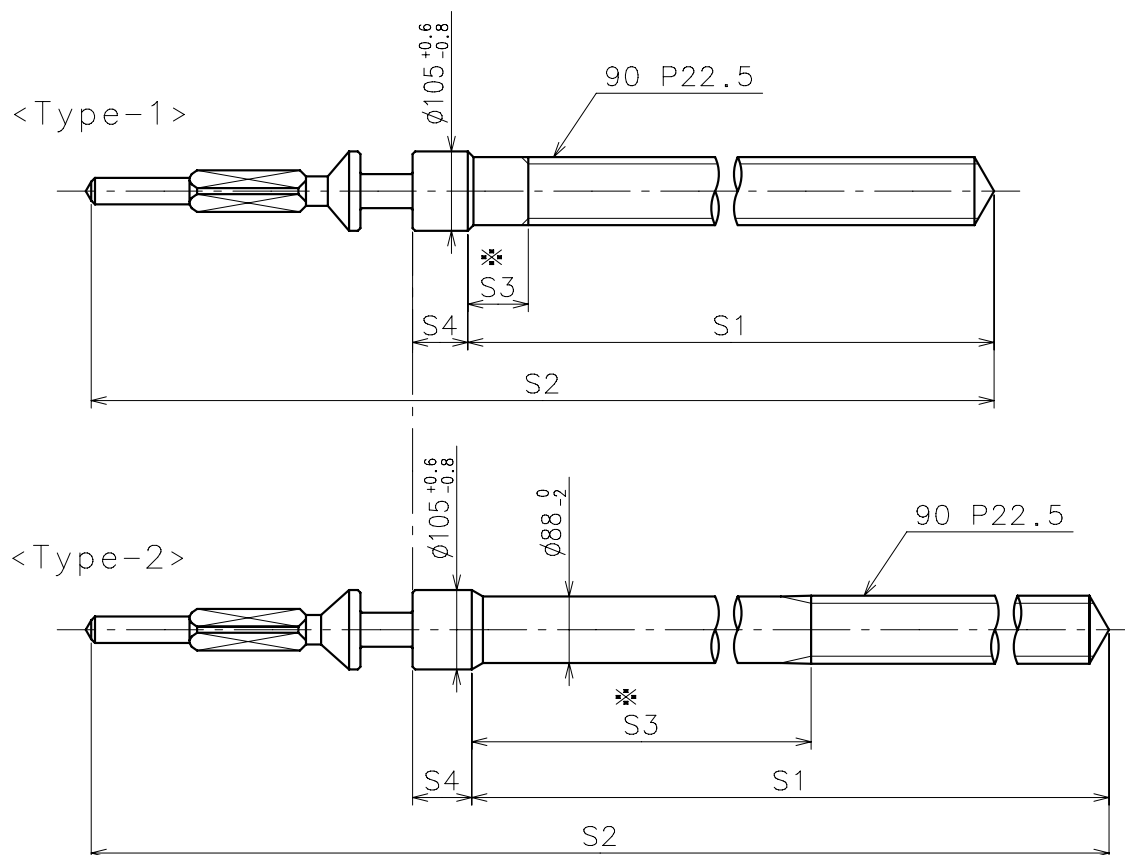


	Parts No.		Dimension	
	Hour wheel	Center wheel	K1	K2
Type S (1) Y120F1	0271796	0221797	52	33.5
Type L I (3) Y120F3	0271764	0221764	52	33.5
Type L II (4) Y120F2	0271797	0221779	60	33.5



	L1	L2	—	L4	L5	L6	T	*1 R
Type S (1) Y120F1	80	118	—	40	MIN: 50	MAX: 30	15	MAX: 1250
Type L I (3) Y120F3	128	166	—	MAX: 90	MIN: 50	MAX: 30	15	MAX: 1250
Type L II (4) Y120F2	185	226	—	MAX: 150	MIN: 50	MAX: 30	15	MAX: 1250

※ 1: It is the size taken into consideration for hands attachment.  
Please observe some standard value specified in unbalance when using long hands.



	Part No.	S1	S2	* S3	S4
Type-1 (Standard)	0354788	1473	1971	80	73
Type-2	0354787	1743	2246	887	78

Material : Steel

Hardness : Vickers 530±50





