

Watch Movement Specification and Drawing

STANDARD

Cal. Y120G

Movement Size

6 3/4 × 8'''

Casing Diameter

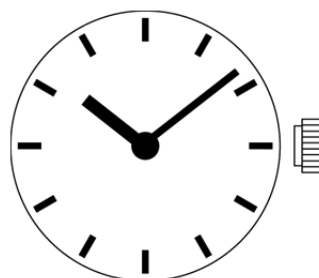
15.3 × 17.8 mm

Height

2.99mm

Battery Life

4 years

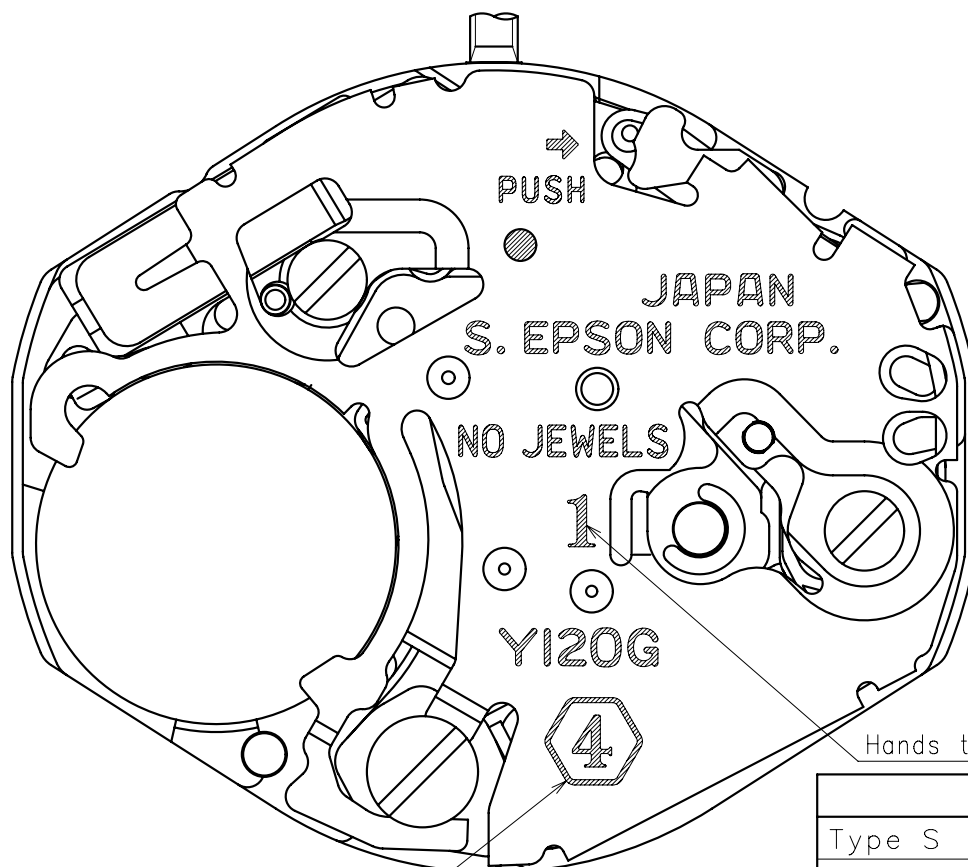


Date: 30/Nov./'18

Cal. Y120G

Items	Rev.	Page
Specifications	03	1
Appearance	05	2
Casing	05	3
Hand fitting	05	4
Hand setting stem	04	5
Dial	01	6
Casing ring	01	7

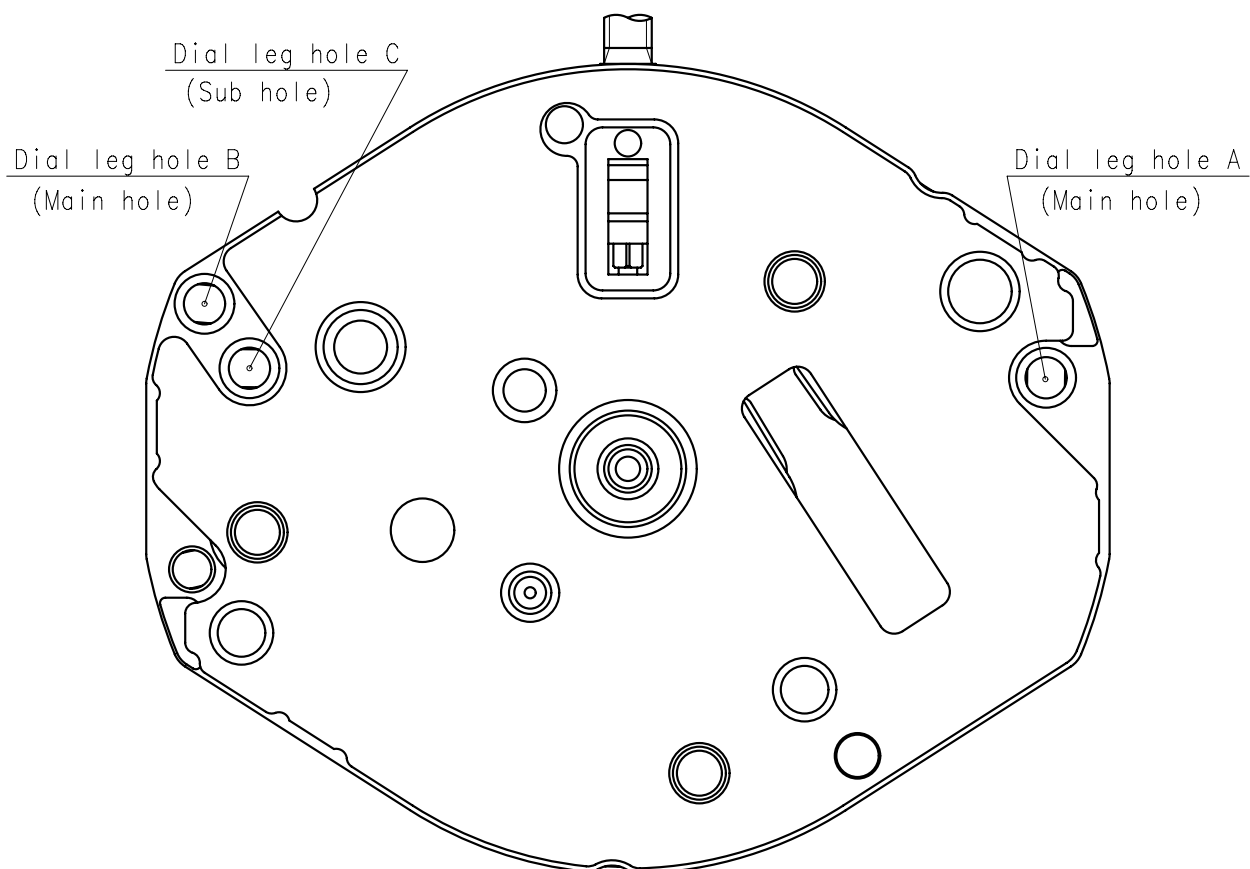
Cal.	Y120G	Specifications		Date : 20/Oct./'14
				Rev. : 03
Analog Quartz 6 3/4 × 8''' Standard Series Movement / Two Hands (H/M)				
1. MOVEMENT DIMENSIONS				
Outside diameter		15.30mm(3-9H) × 18.20mm(12-6H)		
Casing diameter		15.30mm(3-9H) × 17.80mm(12-6H)		
Total height		2.99mm		
2. TIME STANDARD				
Type of quartz oscillator		Tuning fork		
Frequency of quartz oscillator		32,768 Hz		
Accuracy		±20 seconds per month (on wrist)		
Operating temperature range		−5°C to +50°C		
Regulation device		Nil (Pre-adjusted)		
3. INDICATOR / FUNCTIONS				
2 Hands		Hour / Minute		
Reset switch				
Setting mechanism		Crown at normal position		: Free
		Crown pulled out 1st click		: Time setting / Reset
4. FEATURES				
Jewels		0 Jewels		
Anti-magnetism		Over 1600A/m (Direct current magnetic field)		
Maximum unbalance of hands		Minute hand		: 0.6 μ N·m
		Hour hand		: 0.5 μ N·m
5. BATTERY				
Type / Size		Silver oxide battery / φ 6.8mm × t 2.6mm		
Recommended battery		SR626SW (Maxell, Sony)		
Nominal voltage		1.55 V		
Battery life		Approx. 4 years		
Driving current consumption		Approx. 0.8 μ A		
Operation stopping voltage		0.9 V		
6. SEPARATED PARTS (Parts code)				
Hand setting stem		0354788 or 0354787		
Battery		SR626SW		
7. TEST OF ACCURACY				
Equipment to be used		SEIKO quartz tester QT-99, Greiner quartz timer-C , Witschi Q-tester 4000		
Duration of measurement		10 seconds		
Microphone to be used		Electromagnetic detection type		
All specifications are subject to change without notice.				

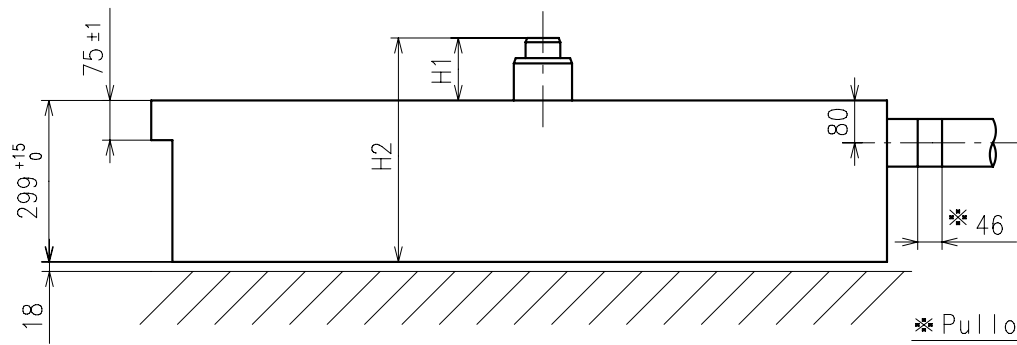


Hands type

	Mark
Type S (1)	1
Type L I (3)	3

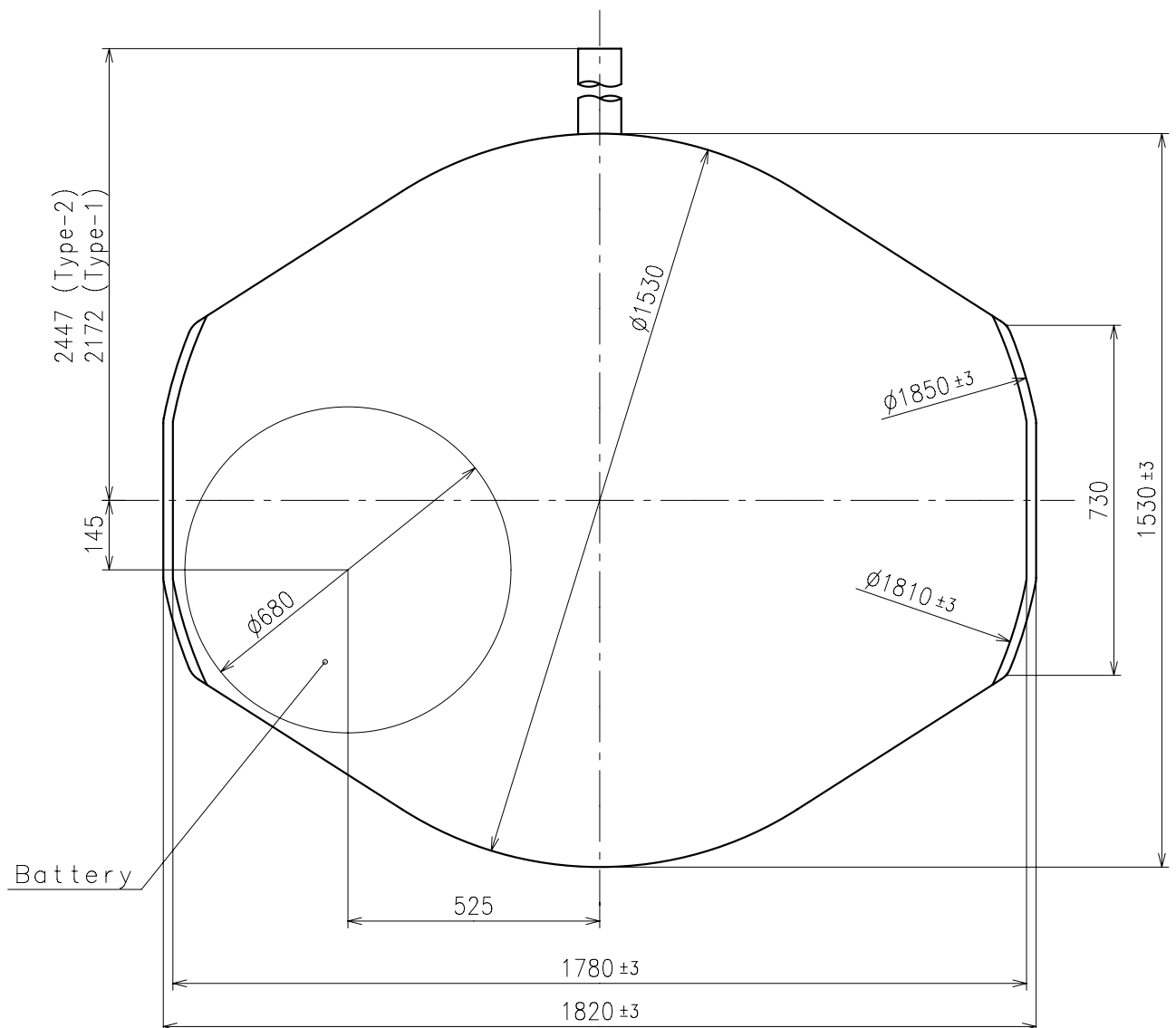
Symbol mark(Battery life)



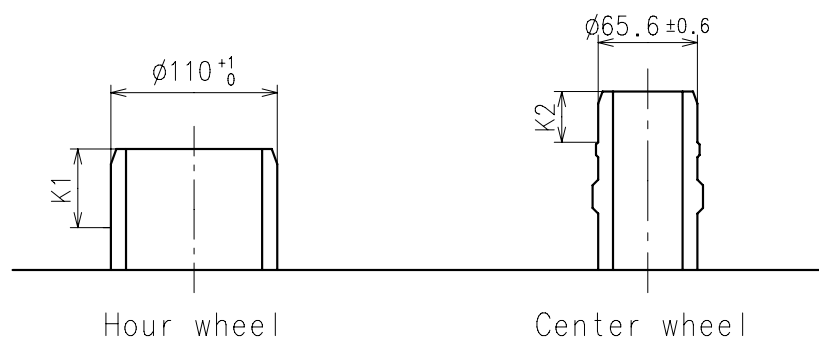


※ Pullout stroke

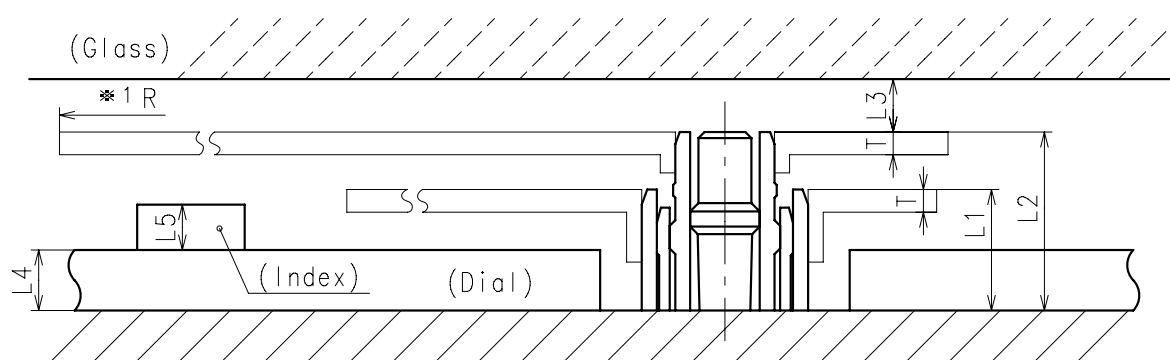
Center post		Type S (1) Y120G1	Type LI (3) Y120G3
Maximum height from dial support	H1	118	166
Total height including movement	H2	417	465



- ※ Minute hand unbalance $\leq 0.6\mu\text{ N}\cdot\text{m}$ ($60\mu\text{ g}\cdot\text{m}$)
- ※ Hour hand unbalance $\leq 0.5\mu\text{ N}\cdot\text{m}$ ($50\mu\text{ g}\cdot\text{m}$)

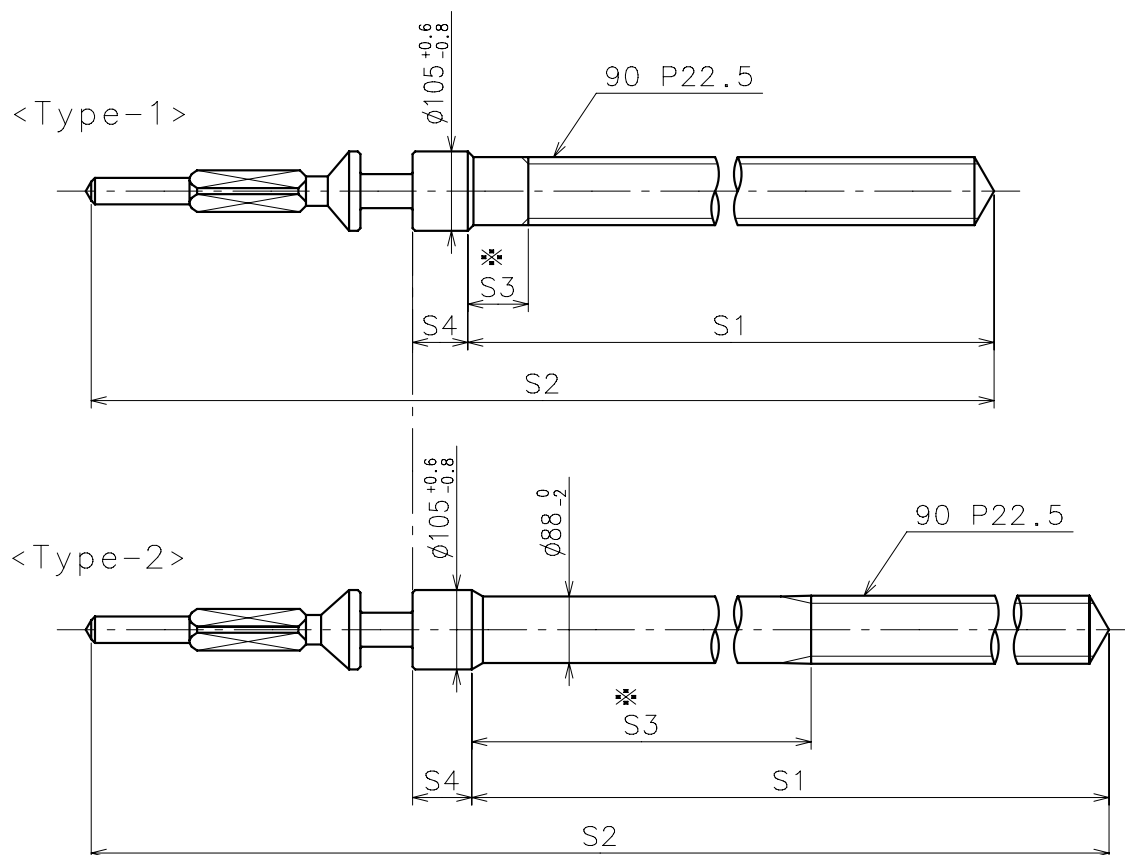


	Parts No.		Dimension	
	Hour wheel	Center wheel	K1	K2
Type S (1) Y120G1	0271796	0221797	52	33.5
Type LI (3) Y120G3	0271764	0221764	60	33.5



	L1	L2	L3	L4	L5	T	*1 R
Type S (1) Y120G1	80	118	MIN: 35	40	MAX: 30	15	MAX: 1250
Type LI (3) Y120G3	128	166	MIN: 35	MAX: 90	MAX: 30	15	MAX: 1250

※ 1: It is the size taken into consideration for hands attachment.
Please observe some standard value specified in unbalance when using long hands.

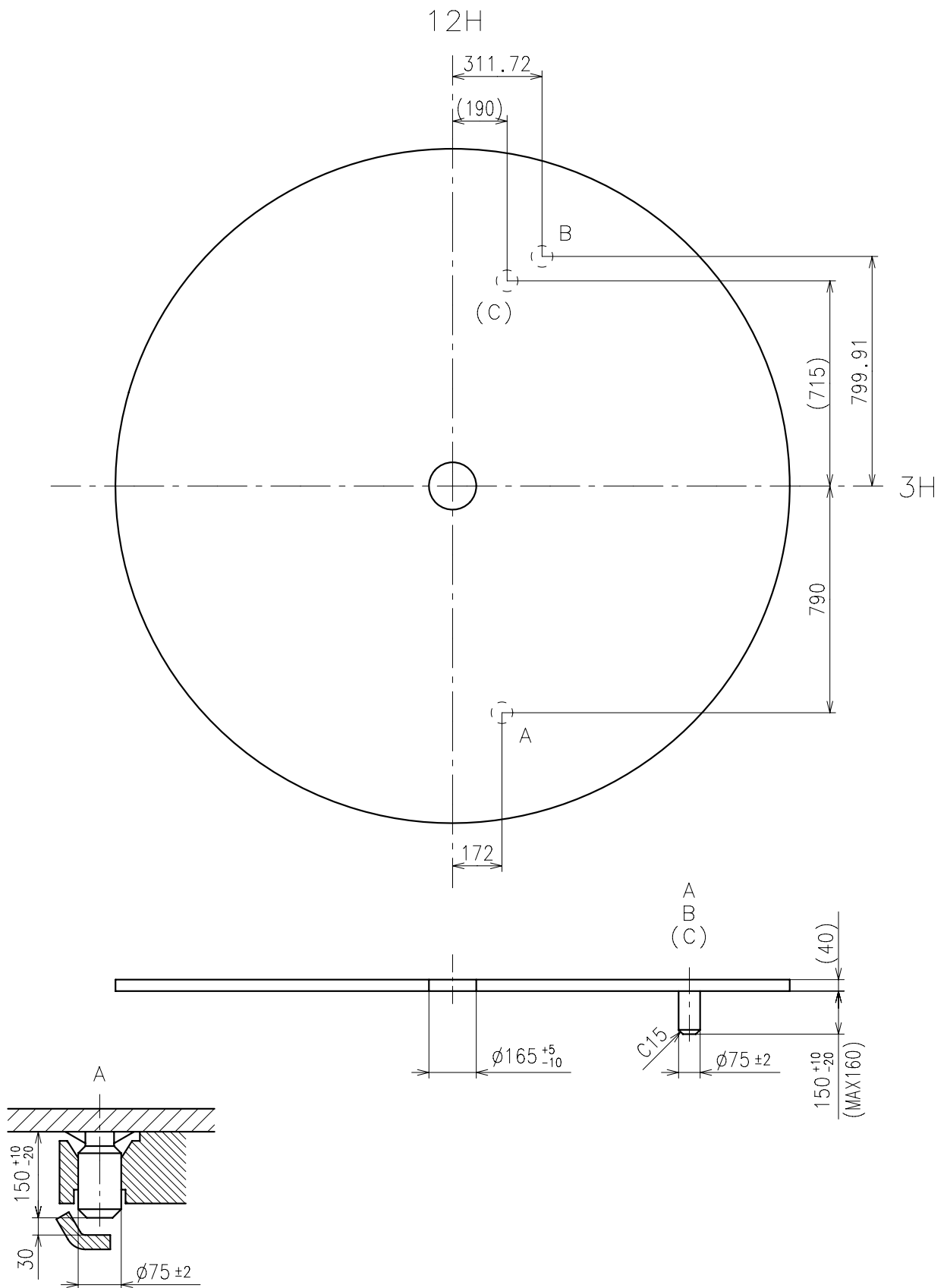


※ Not threaded

	Part No.	S1	S2	※ S3	S4
Type-1 (Standard)	0354788	1473	1971	80	73
Type-2	0354787	1743	2246	887	78

Material : Steel

Hardness : Vickers 530±50



Use dial leg A-B(Main) or A-C(Sub)

