

Watch Movement Specification and Drawing

STANDARD

Cal. YR67A

Movement Size

10 1/2'''

Casing Diameter

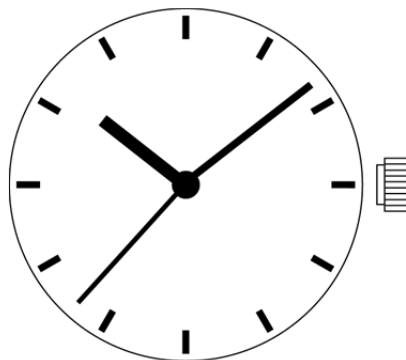
Ø 23.3mm

Height

3.05mm

Battery Life

1.5 years

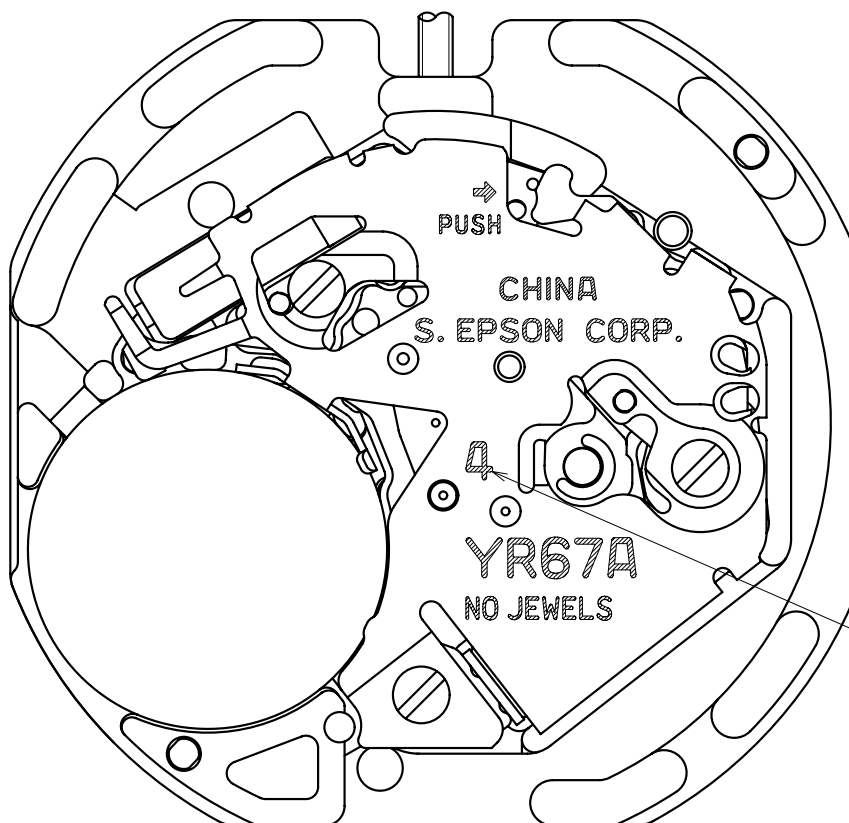


Date: 27/Dec./'16

Cal. YR67A

Items	Rev.	Page
Specifications	03	1
Appearance	05	2
Casing	02	3
Hand fitting	05	4
Hand setting stem	05	5
Dial	02	6
Casing ring	02	7

Cal.	YR67A	Specifications		Date : 20/Oct./'14
				Rev. : 03
Analog Quartz 10 1/2" Standard Series Movement / Three Hands (H/M/S) (High power torque)				
1. MOVEMENT DIMENSIONS				
Outside diameter		ϕ 24.00mm × 21.30mm(3-9H) × 22.50mm(12-6H)		
Casing diameter		ϕ 23.30mm × 21.30mm(3-9H) × 22.50mm(12-6H)		
Total height		3.05mm (including battery)		
2. TIME STANDARD				
Type of quartz oscillator		Tuning fork		
Frequency of quartz oscillator		32,768 Hz		
Accuracy		±20 seconds per month (on wrist)		
Operating temperature range		−5°C to +50°C		
Regulation device		Nil (Pre-adjusted)		
3. INDICATOR / FUNCTIONS				
3 Hands		Hour / Minute / Second (High power torque)		
Reset switch				
Setting mechanism		Crown at normal position	: Free	
		Crown pulled out 1st click	: Time setting / Reset	
4. FEATURES				
Jewels		0 Jewels		
Anti-magnetism		Over 1600A/m (Direct current magnetic field)		
Maximum unbalance of hands		Minute hand	: 0.6 μ N•m	
		Hour hand	: 0.5 μ N•m	
Moment of Inertia		Second hand	: less than 3 μ g•m²	
		(Disc hand available)		
5. BATTERY				
Type / Size		Silver oxide battery / ϕ 9.5mm × t 2.73mm		
Recommended battery		SR927SW (Maxell, Sony, Seizaiken)		
Nominal voltage		1.55 V		
		Second hand (standard)	Second disc hand	
Battery life		Approx. 1.6 years	Approx. 1.5 years	
Driving current consumption		Approx. 3.8 μ A	Approx. 3.9 μ A	
Operation stopping voltage		1.1 V	1.3 V	
6. SEPARATED PARTS (Parts code)				
Hand setting stem		0354788 or 0354787		
Battery		SR927SW		
7. TEST OF ACCURACY				
Equipment to be used		SEIKO quartz tester QT-99, Greiner quartz timer-C , Witschi Q-tester 4000		
Duration of measurement		10 seconds		
Microphone to be used		Electromagnetic detection type		
All specifications are subject to change without notice.				



Hands type

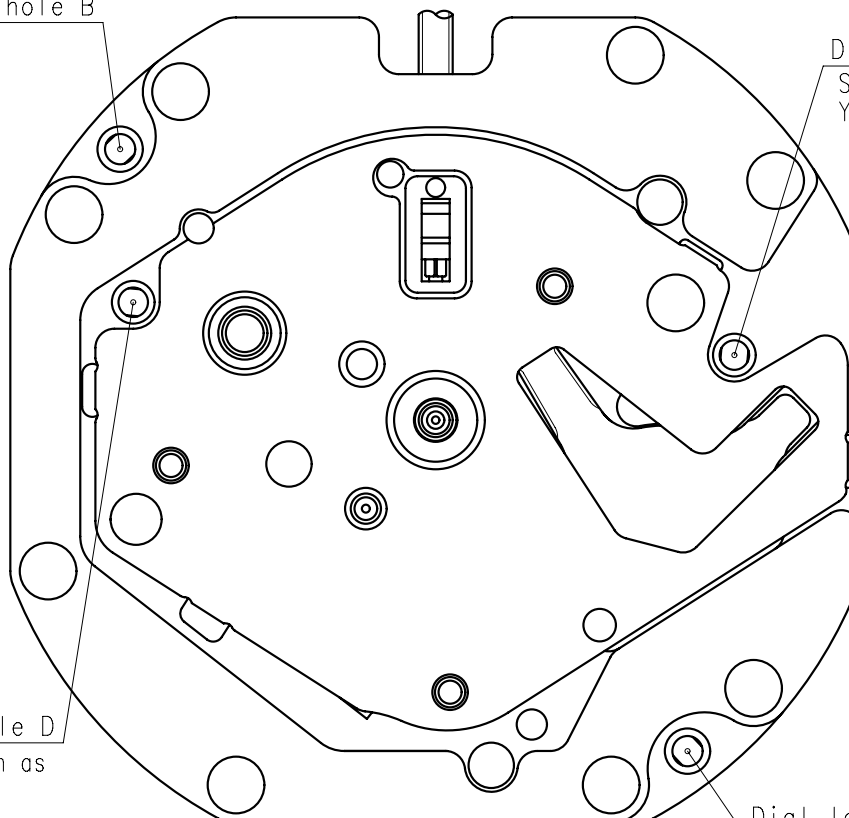
	Mark
Type S	4

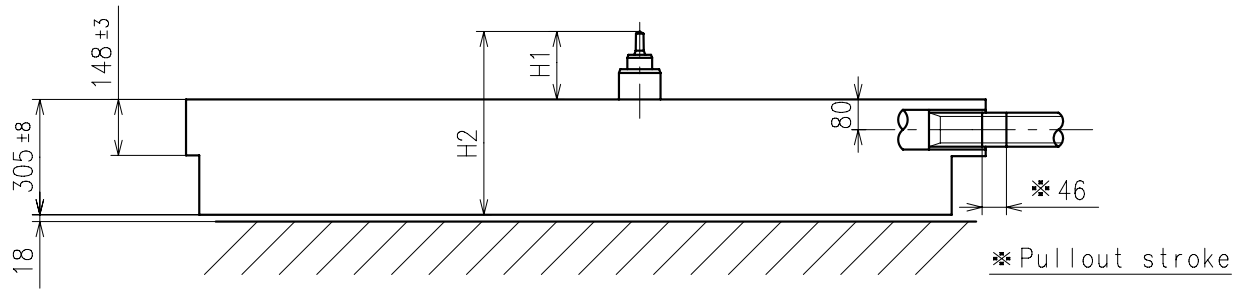
Dial leg hole B

Dial leg hole C
Same position as
Y12 and AL2

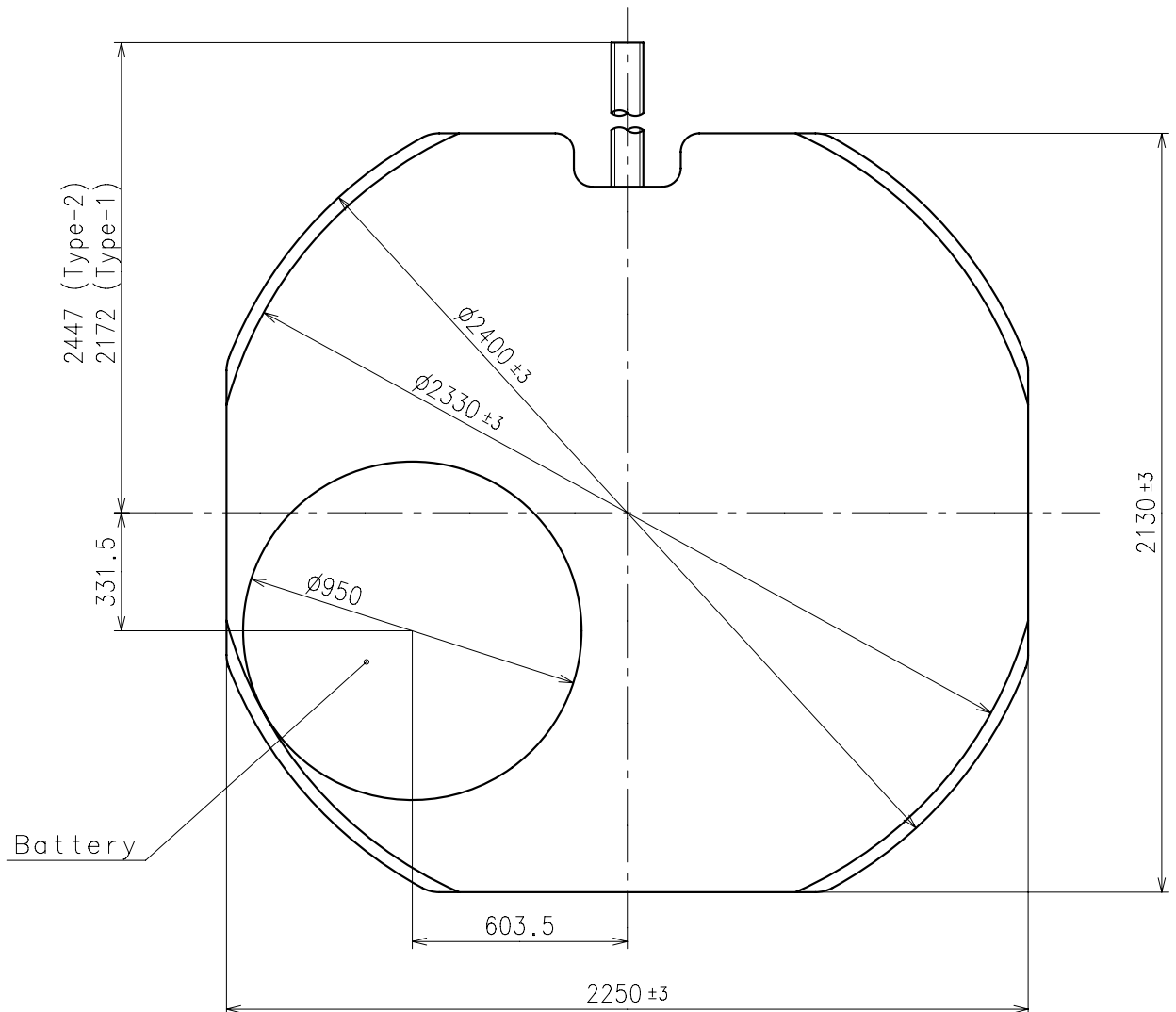
Dial leg hole D
Same position as
Y12 and AL2

Dial leg hole A

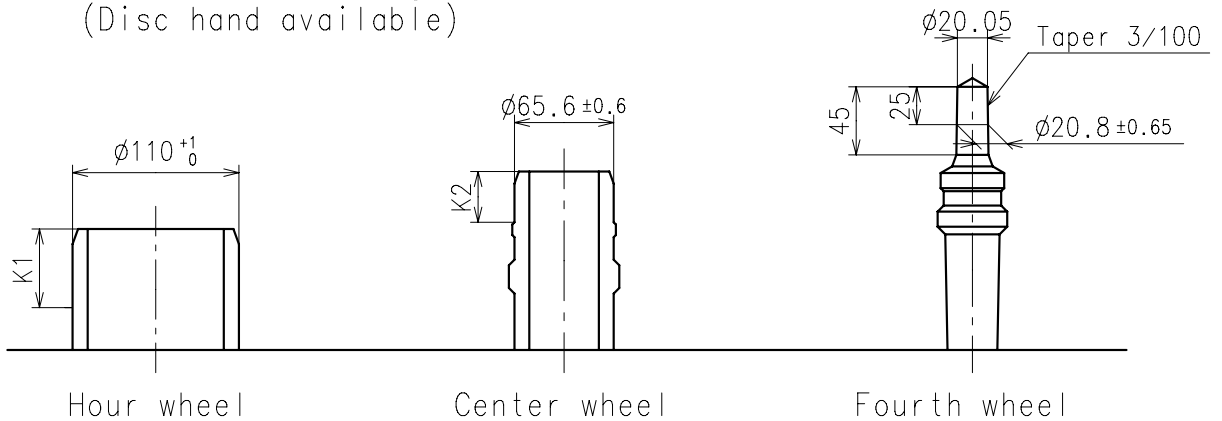




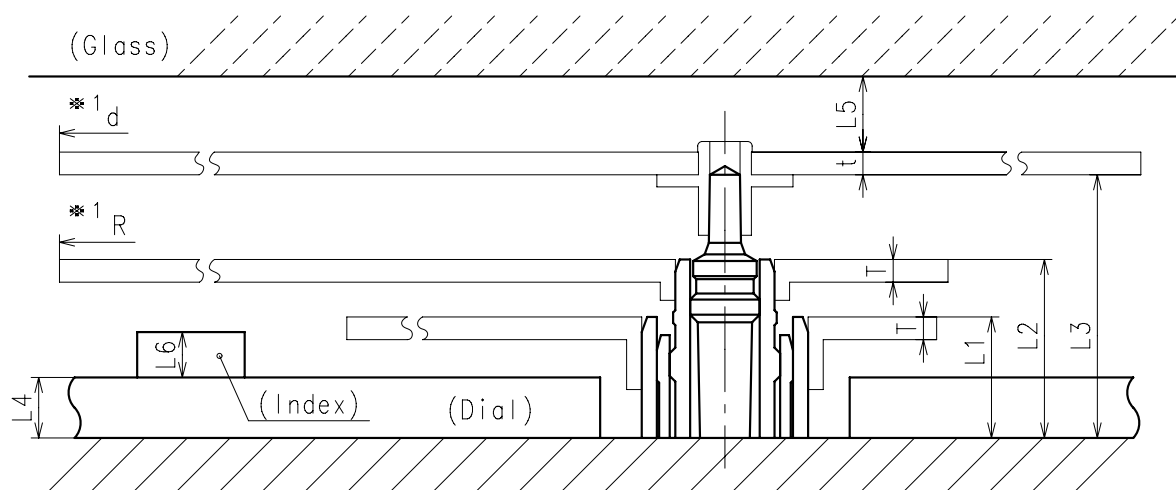
Center post		Type S (4) YR67A1
Maximum height from dial support	H1	174
Total height including movement	H2	479



- ※ Unbalance
 - Minute hand $\leq 0.6\mu\text{N}\cdot\text{m}$ ($60\mu\text{g}\cdot\text{m}$)
 - Hour hand $\leq 0.5\mu\text{N}\cdot\text{m}$ ($50\mu\text{g}\cdot\text{m}$)
- ※ Moment of inertia
 - Second hand $\leq 3\mu\text{g}\cdot\text{m}^2$
 - (Disc hand available)



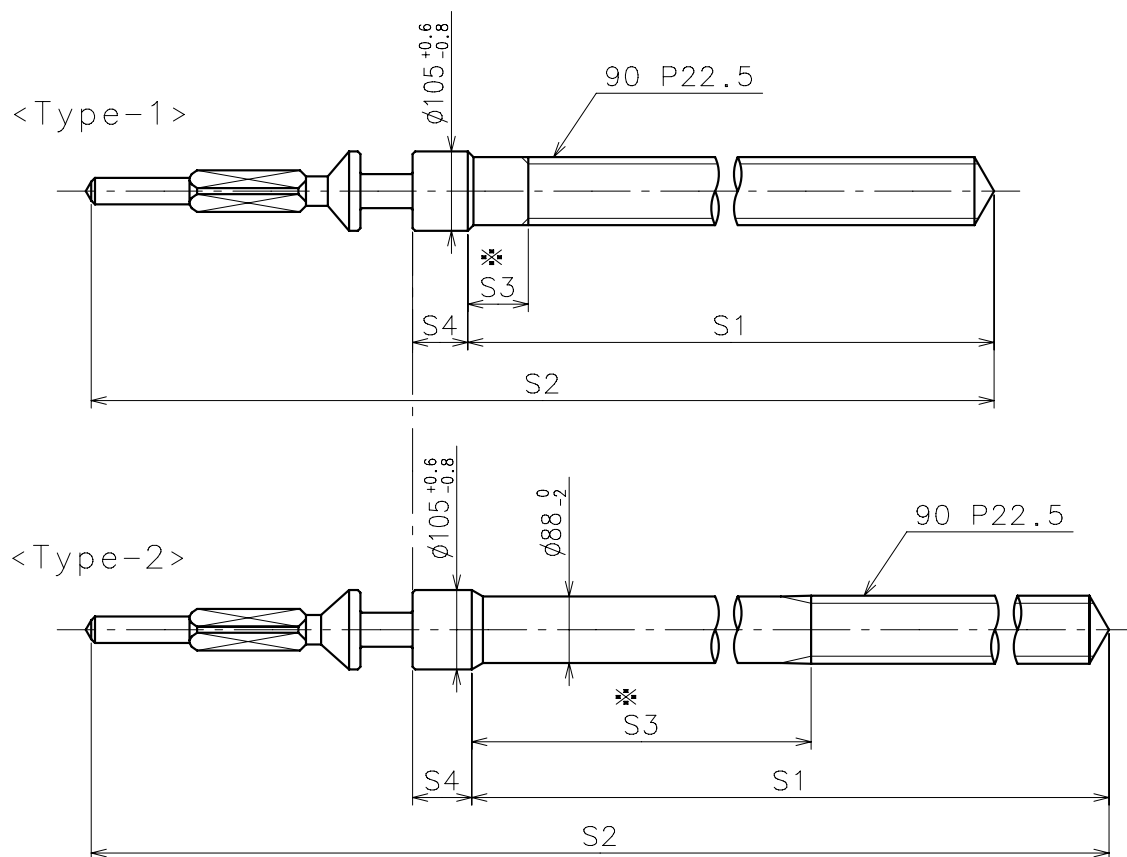
	Parts No.			Dimension	
	Hour wheel	Center wheel	Fourth wheel	K1	K2
Type S (4) YR67A1	0271796	0221797	0241763	52	33.5



	L1	L2	L3	L4	L5	L6	T	*1 R
Type S (4) YR67A1	80	118	174	40	MIN: 50	MAX: 30	15	MAX: 1250

Second disc hand	t	d
Material:polyester ($\rho = 1.4\text{g}/\text{cm}^3$)	12.5	MAX: $\phi 2600$
	15	MAX: $\phi 2500$
	18	MAX: $\phi 2400$

※ 1: It is the size taken into consideration for hands attachment.
Please observe some standard value specified in unbalance and moment of inertia when using long or disc hands.

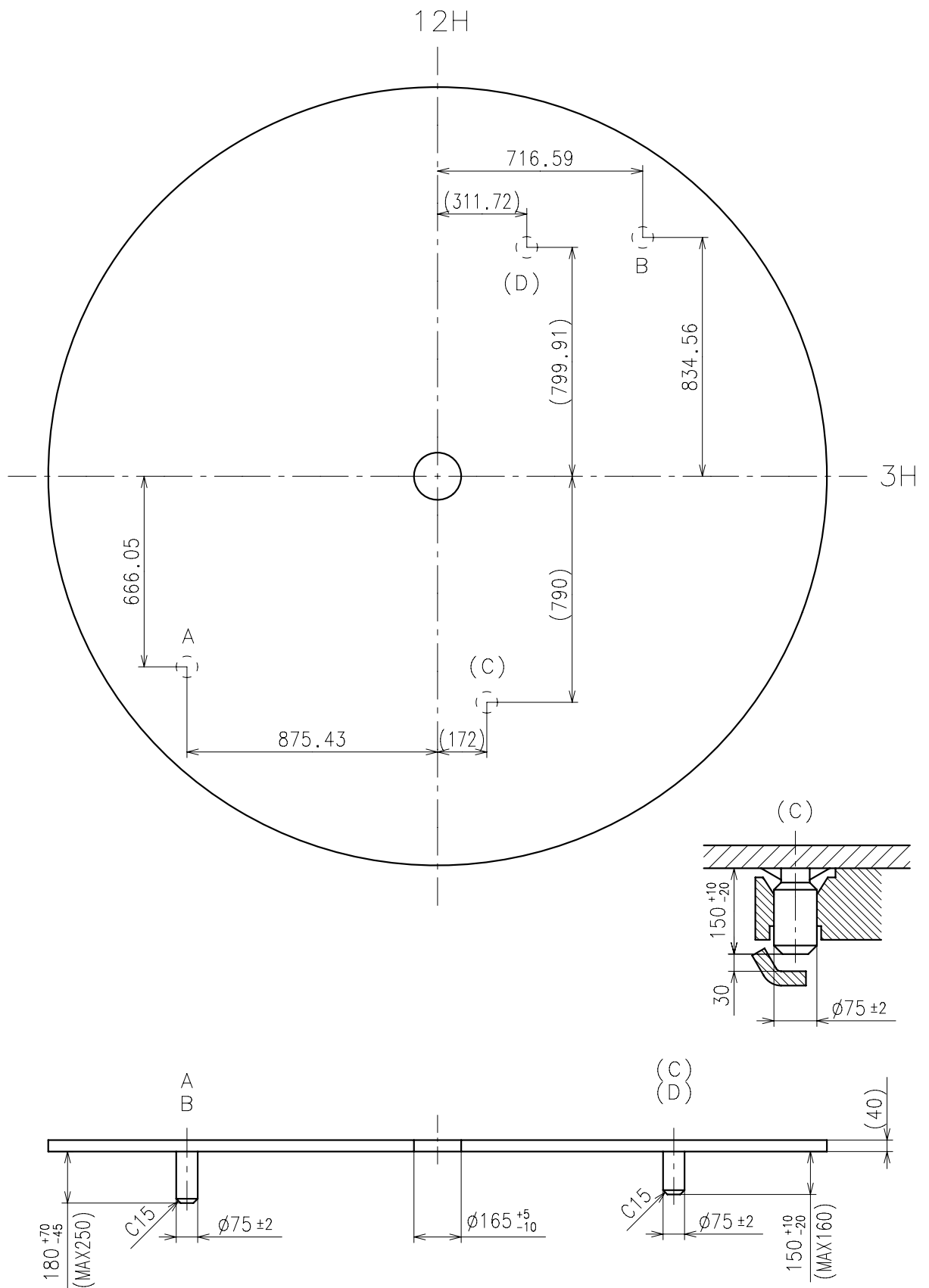


* Not threaded

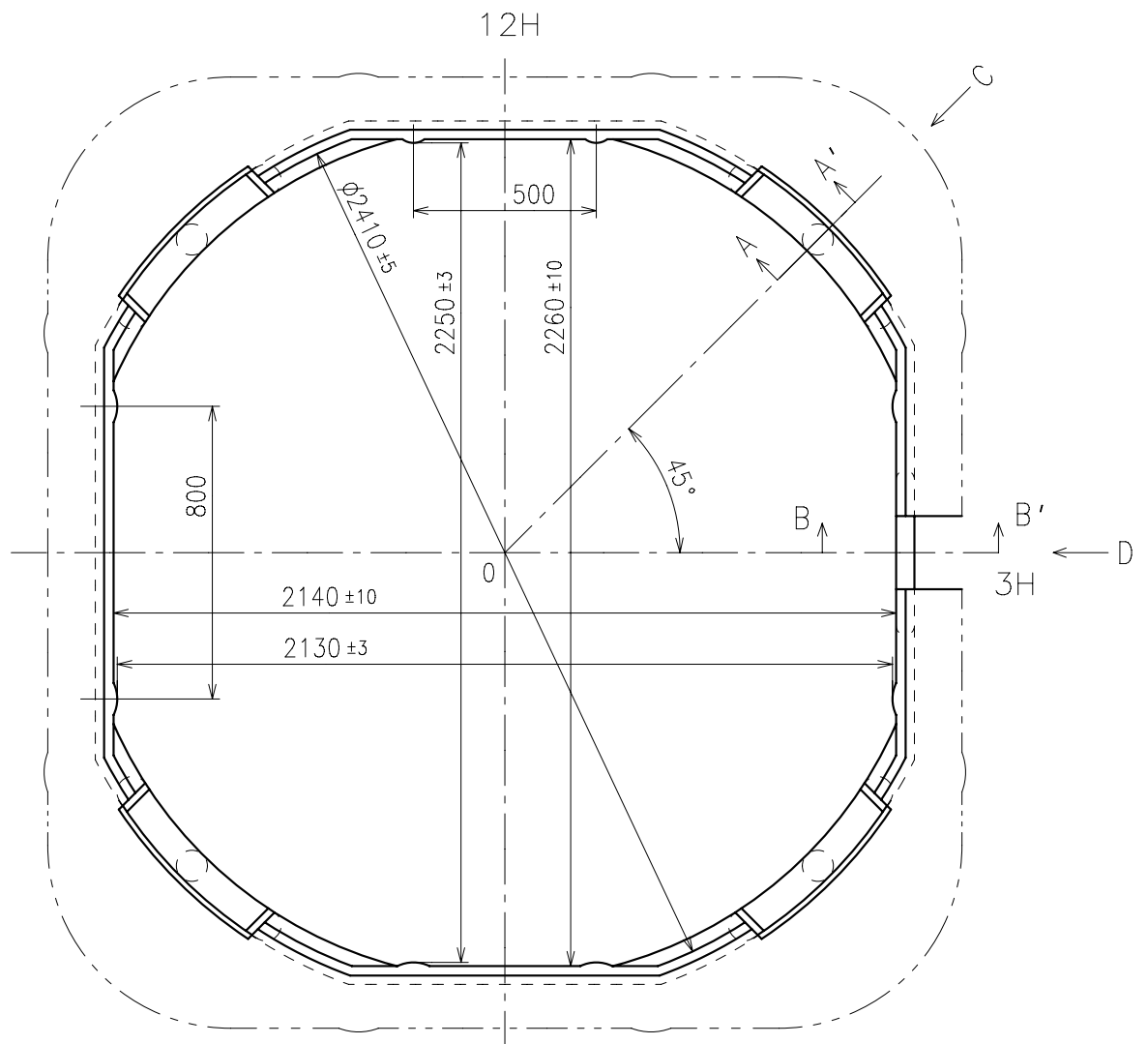
	Part No.	S1	S2	* S3	S4
Type-1 (Standard)	0354788	1473	1971	80	73
Type-2	0354787	1743	2246	887	78

Material : Steel

Hardness : Vickers 530±50



(C),(D) : Same position as Y12 and AL2



C view

A-A' section

B-B' section

D view

